

5/14/99

PROJECT REFERENCE NO. B-4863	SHEET NO. 8
ROADWAY DESIGN ENGINEER PROFESSIONAL SEAL 030952 WINNER D. FRANK	HYDRAULICS ENGINEER PROFESSIONAL SEAL 018442 WILLIAM LEON BOLLINGER
4/7/2021	4/7/2021

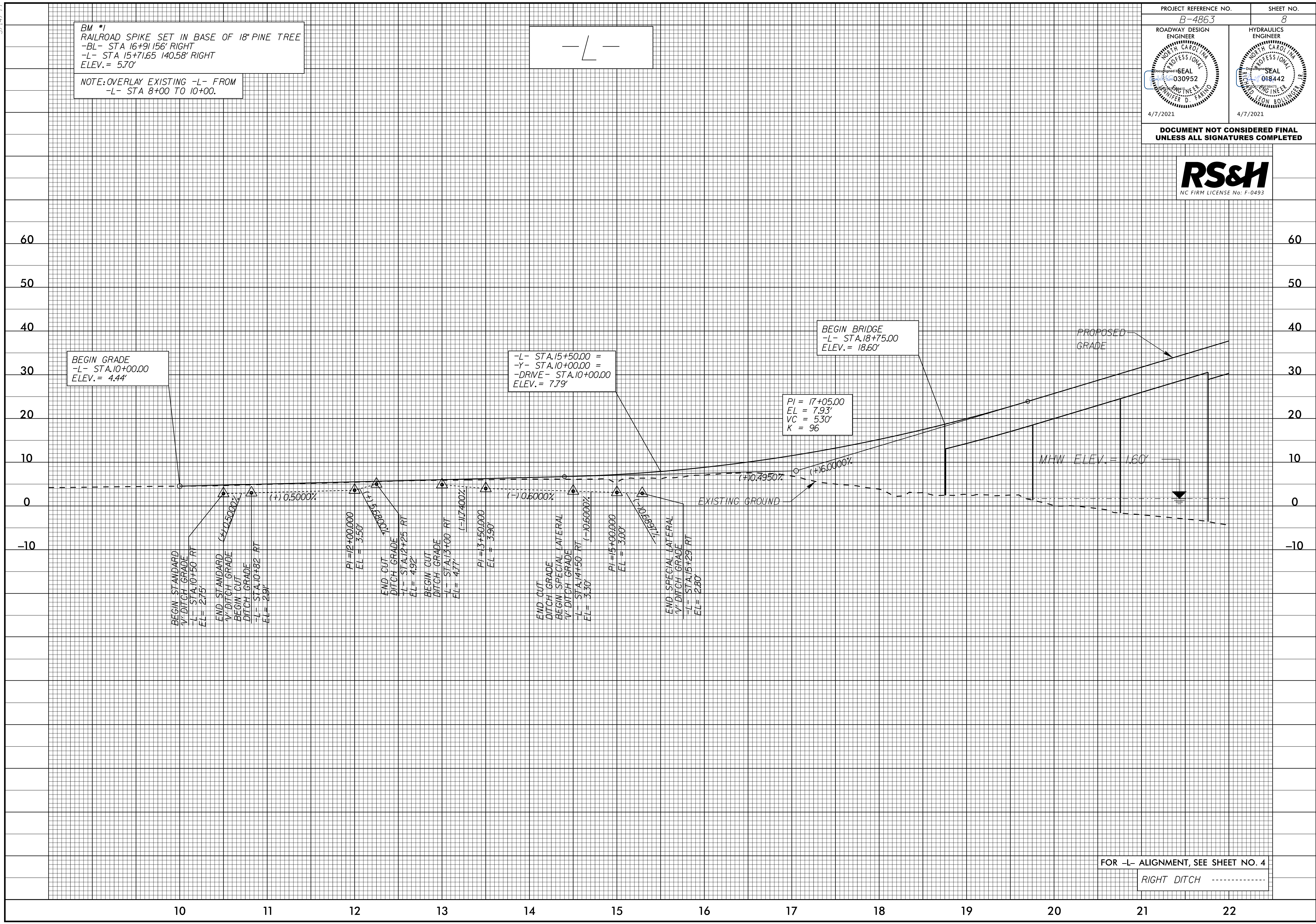
DOCUMENT NOT CONSIDERED FINAL
UNLESS ALL SIGNATURES COMPLETED



BM #1
RAILROAD SPIKE SET IN BASE OF 18" PINE TREE
-BL- STA 16+91.156' RIGHT
-L- STA 15+71.65 140.58' RIGHT
ELEV.= 5.70'

NOTE: OVERLAY EXISTING -L- FROM
-L- STA 8+00 TO 10+00.

-L-



BEGIN GRADE
-L- STA.10+00.00
ELEV.= 4.44'

-L- STA.15+50.00 =
-Y- STA.10+00.00 =
-DRIVE- STA.10+00.00
ELEV.= 7.79'

BEGIN BRIDGE
-L- STA.18+75.00
ELEV.= 18.60'

PI = 17+05.00
EL = 7.93'
VC = 530'
K = 96

BEGIN STANDARD
1/2' DITCH GRADE
-L- STA.10+50 RT
EL = 2.75'

END STANDARD
1/2' DITCH GRADE
-L- STA.10+82 RT
EL = 2.89'

PI = 12+00.000
EL = 3.50'

END CUT
DITCH GRADE
-L- STA.12+25 RT
EL = 4.92'

BEGIN CUT
DITCH GRADE
-L- STA.13+00 RT
EL = 4.77'

PI = 13+50.000
EL = 3.90'

END CUT
DITCH GRADE
BEGIN SPECIAL LATERAL
1/2' DITCH GRADE
-L- STA.14+50 RT
EL = 3.30'

PI = 15+00.000
EL = 3.00'

END SPECIAL LATERAL
1/2' DITCH GRADE
-L- STA.15+29 RT
EL = 2.80'

FOR -L- ALIGNMENT, SEE SHEET NO. 4

RIGHT DITCH -----

R5_FEB_2020_09:08
R5\F\Roadway\p\p\B4863_Rdy_pfl_08.dgn