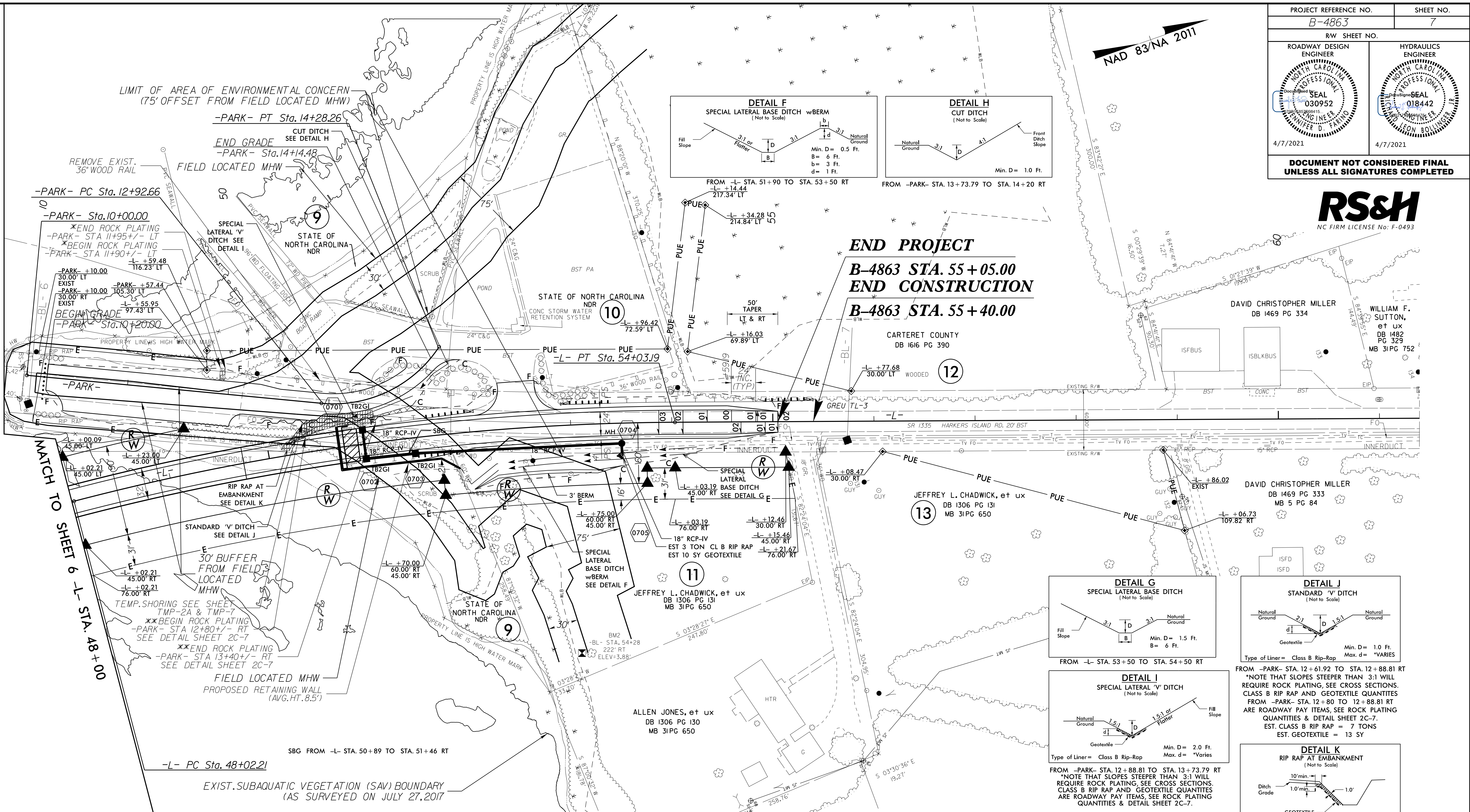


8.17/799

PROJECT REFERENCE NO. B-4863	SHEET NO. 7
RW SHEET NO.	
ROADWAY DESIGN ENGINEER 	HYDRAULICS ENGINEER
DOCUMENT NOT CONSIDERED FINAL UNLESS ALL SIGNATURES COMPLETED	

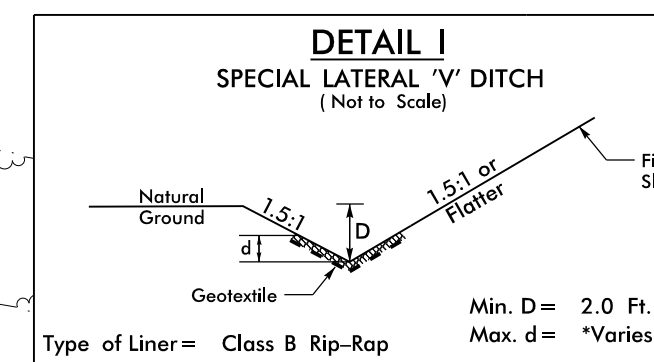
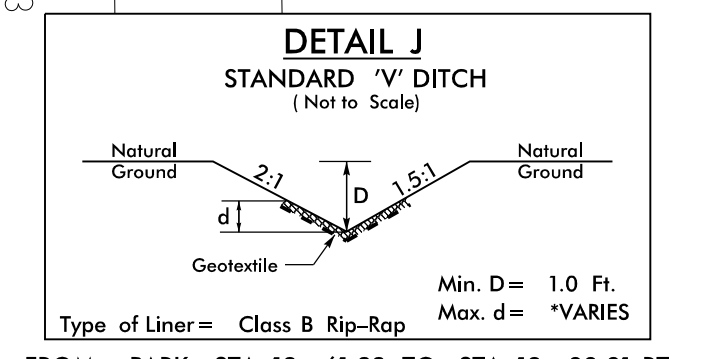
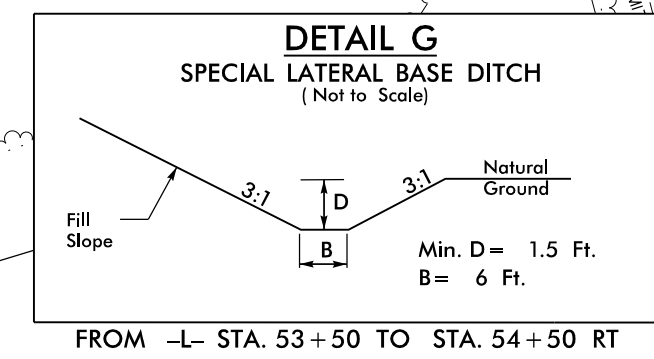
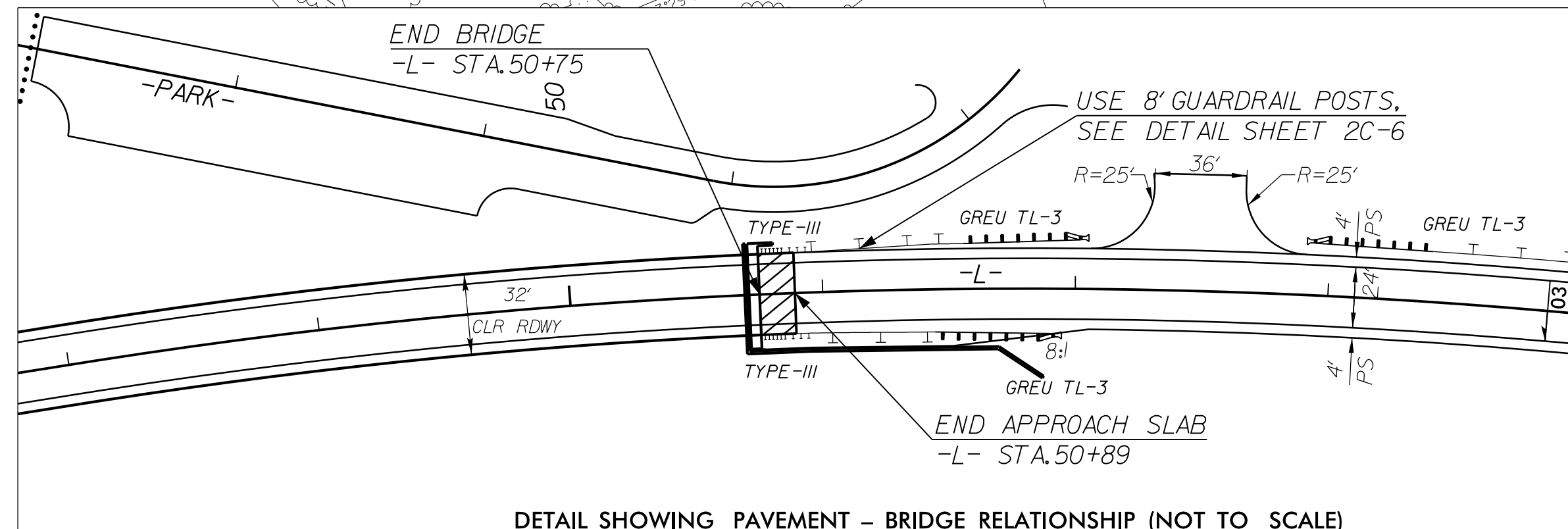


MATCH TO SHEET 6 -L- STA. 48+00

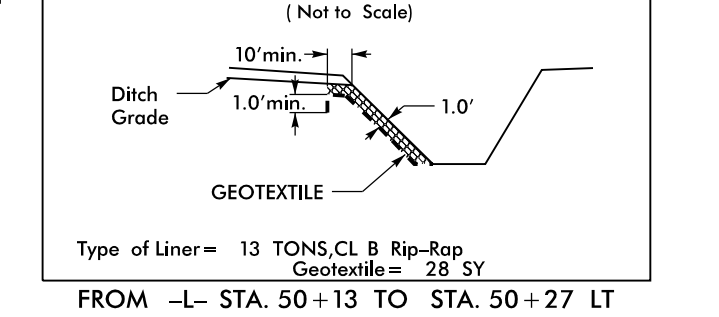
-L- CURVE DATA	-PARK- CURVE DATA
PI Sta 51+04.28	PI Sta 13+41.32
$\Delta = 14^{\circ} 20' 50.1''$ (RT)	$\Delta = 24^{\circ} 02' 42.4''$ (LT)
D = 2' 23' 14.4"	D = 22' 55' 05.9"
L = 600.98'	L = 104.92'
T = 302.07'	T = 53.24'
R = 2,400.00'	R = 250.00'
SE = 03	SE = NC
INC = VARIES	INC = N/A

* NOTE: USE ROCK PLATING FROM -PARK- STA. 11+90+/- TO STA. 11+95+/-, LEFT AND CARRY ROCK PLATING TO 2.5:1 (H:V) SLOPE AND USE ROCK PLATING DETAIL NO. 1 OF ROADWAY STANDARD DRAWING NO. 275.01.

** NOTE: USE ROCK PLATING FROM -PARK- STA. 12+80+/- TO STA. 13+40+/-, RIGHT AND CARRY ROCK PLATING TO 2.5:1 (H:V) SLOPE AND USE ROCK PLATING DETAIL WITH 8' GUARDRAIL POSTS ON ROADWAY PLAN SHEET NO. 2C-7.



FROM -PARK- STA. 12+61.92 TO STA. 12+88.81 RT
*NOTE THAT SLOPES STEEPER THAN 3:1 WILL REQUIRE ROCK PLATING, SEE CROSS SECTIONS. CLASS B RIP RAP AND GEOTEXTILE QUANTITIES FROM -PARK- STA. 12+80 TO 12+88.81 RT ARE ROADWAY PAY ITEMS, SEE ROCK PLATING QUANTITIES & DETAIL SHEET 2C-7. EST. CLASS B RIP RAP = 7 TONS EST. GEOTEXTILE = 13 SY



FOR -L- PROFILE, SEE SHEET NO. 11

FOR -PARK- DTL. SHEET, SEE SHEET 2B-3

FOR -PARK- PROFILE, SEE SHEET NO. 12

	BRIDGE APPROACH SLAB
	PAVEMENT REMOVAL
	ROCK PLATING

FOR STRUCTURE PLANS, SEE SHEETS S-1 THRU S-205

FOR RETAINING WALL PLANS, SEE SHEETS W-1 THRU W-27

05-FEB-2020 09:09
RS&H\PROJECTS\B-4863-Rdw-psh_07.dgn
\$\$\$\$\$\$DISCLAIMER\$\$\$\$\$\$