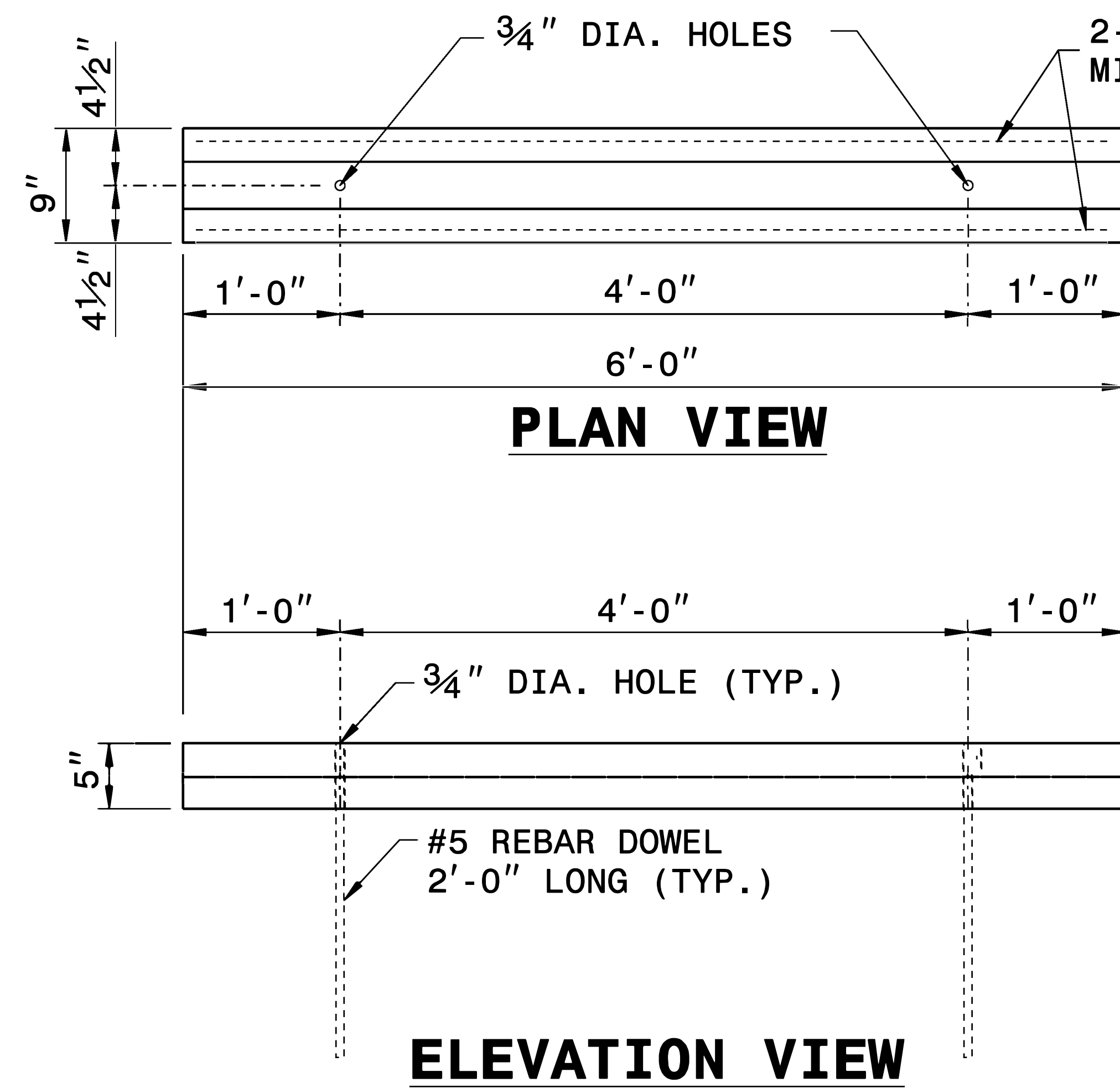


STATE OF  
NORTH CAROLINA  
DEPT. OF TRANSPORTATION  
DIVISION OF HIGHWAYS  
RALEIGH, N.C.

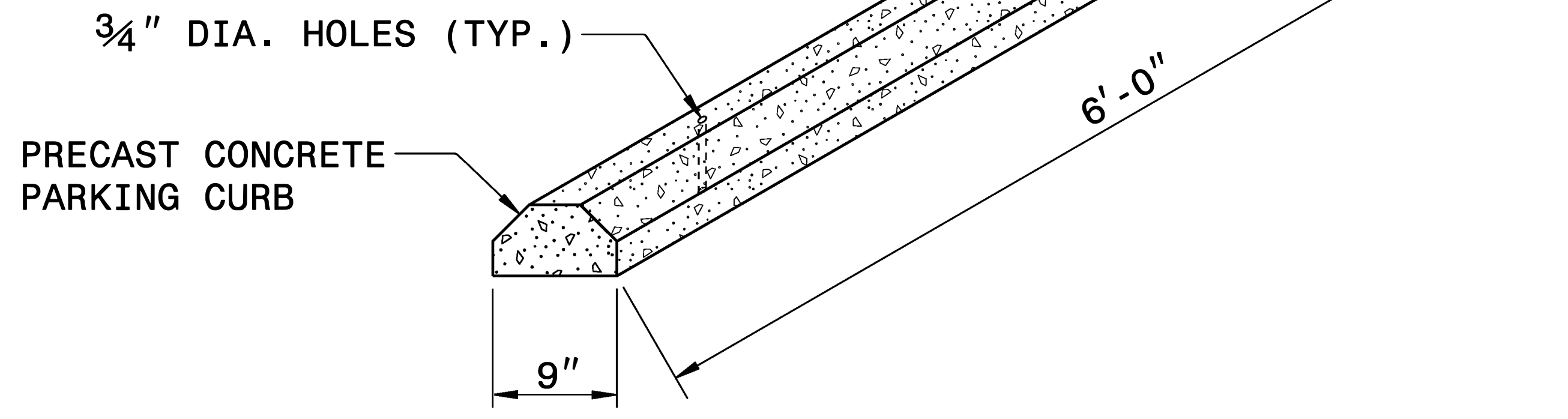
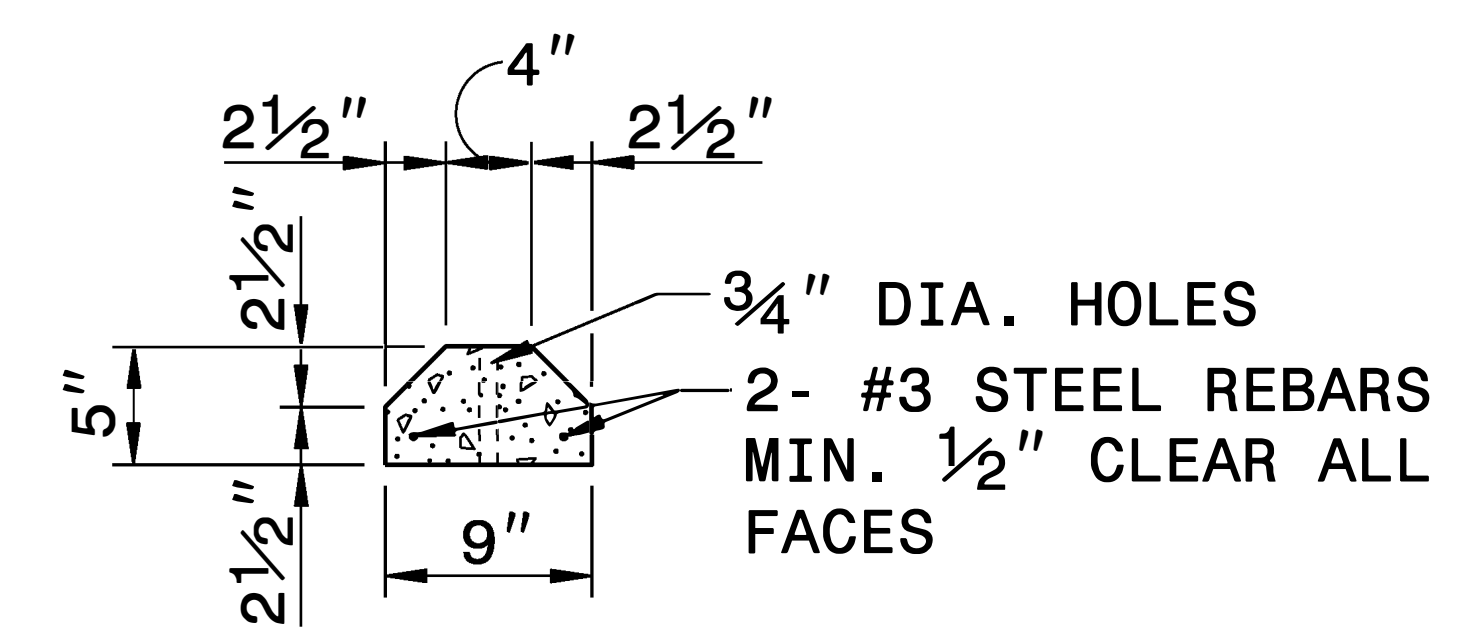
ENGLISH DETAIL DRAWING FOR  
**PRECAST CONCRETE PARKING CURB**

SHEET 1 OF 1  
**PRCSTCRB**



GENERAL NOTES:  
-CONCRETE COMPRESSIVE STRENGTH  
4000psi MIN.  
-ASTM A615M - GRADE 400 REINFORCING  
STEEL.

3/4" DIA. HOLES  
2- #3 STEEL REBARS  
MIN. 1/2" CLEAR ALL FACES



3/4" DIA. HOLES (TYP.)

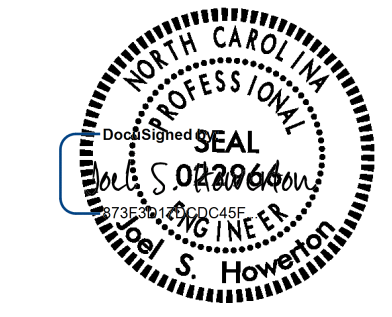
PRECAST CONCRETE  
PARKING CURB

STATE OF  
NORTH CAROLINA  
DEPT. OF TRANSPORTATION  
DIVISION OF HIGHWAYS  
RALEIGH, N.C.

ENGLISH DETAIL DRAWING FOR  
**PRECAST CONCRETE PARKING CURB**

SHEET 1 OF 1  
**PRCSTCRB**

30-NOV-2018 13:30 S:\Contracts\Contractors\Special\Details\vertical\usr\details\stand\Precast Parking Curb.dgn J:\overton AT CSU-212595



4/7/2021

DOCUMENT NOT CONSIDERED FINAL  
UNLESS ALL SIGNATURES COMPLETED

**CONTRACT STANDARDS  
AND DEVELOPMENT UNIT**  
Office 919-707-6950 FAX 919-250-4119

**SEE PLATE FOR TITLE**

ORIGINAL BY: E.E. WARD DATE: 5-97  
MODIFIED BY: DATE:  
CHECKED BY: DATE:  
FILE SPEC.: s:\eric\usr\details\metric\stand\prstcrb\_eng.dgn