

Pc.No	NAME	QTY	MATL	PATT.	REMARKS
70	BEARING	1	C.S.	3531	ALT. CORE
71	CAP	1	C.S.	3532	ALT. CORE
72	BOLT FOR 70	4	S.		T.B. LIST
73	BOLT FOR 70 & 71	4	S.		T.B. LIST
74	LINER FOR 70	2	FIBER	5 1/2" x 1 1/2"	
75	SHIM FOR 70	1	S.	14" x 5 1/2"	1/2 - 1/2 - 1/2 - 1/2
76	SHAFT	1	T.F.S.		
77	SLIDE JAW CLUTCH	1	C.S.	8479	WITHOUT P.A. ALT. CORE
78	JAW CLUTCH	1	C.S.	8479	WITH P.A. ALT. CORE
79	BUSHING FOR 78	1	BZ.	475	
80	CLUTCH BAND HALF	2	BZ.	10771	
81	BOLT FOR 80	2	S.	HEX. HD. MACH.	1/2 x 5 w/ HEX. NUT & L.V.
82	SHIFTER BEARING	2	C.I.	8805	
83	BOLT FOR 82	4	S.	HEX. HD. MACH.	3/4 x 3 w/ HEX. NUT & L.V.
84	SHIM FOR 82	2	S.	7" x 4"	1/2 x 1/2 - 1/2 - 1/2
85	CLUTCH SHIFT LEVER	2	S.		BATAVIA #
86	KEY FOR 85	2	S.		KEY LIST
87	SET SCREW FOR 85-88	3	S.	HOLLOW	3/8 x 3/4 CUP POINT
88	SHIFT LEVER	1	S.		BATAVIA #3052
89	KEY FOR 88	1	S.		KEY LIST
90	CLUTCH SHIFT SHAFT	1	C.F.S.		
91	COLLAR FOR 91	2	S.	SAFETY	1 1/2 BORE x 2 1/2 O.D. x 1/2 THK
92	SET SCREW FOR 78	1	S.	HOLLOW	3/8 x 1 1/2 CUP POINT
93	DOUBLE BEARING	1	C.S.	3405	ALT.
94	BEARING CAP	2	C.S.	9803	
95	BOLT FOR 95	4	S.		T.B. LIST
96	SHIM FOR 95	2	S.	9' x 5 1/2' x 1/2"	1/2 - 1/2 - 1/2 - 1/2
97	BOLT FOR 95 & 96	4	S.		SEE DETAIL - 3 HEX NUTS
98	LINER FOR 95	4	FIBER	1/2" x 2 1/2"	
99	BUSHING FOR 95 & 96	2	BZ.	8860	
100	CAPSTAN	1	C.S.	6485	
101	PIN FOR 102	2	S.		1/2" x 3/8"
102	CAPSTAN BAR	2	STEEL PIPE		1 1/2" ST'D. GALV.
103	CAP FOR 104	2	M.I.		1 1/2" ST'D. GALV.
104	KEY FOR 77	2	S.		KEY LIST
105	KEY FOR 78	1	S.		KEY LIST
106	SPEED REDUCER	1			EARLE 6D
107	BOLT FOR 109	6	S.		T.B. LIST
108	SHIM FOR 109	2	S.	28 1/2" x 38" x 1/2"	1/2 - 1/2 - 1/2 - 1/2
109	FLEX. COUPLING	1			FALK 8 F
110	KEY FOR 112	1	S.		KEY LIST
111	COLLAR BEARING	1	C.I.	1419	ALT. CORE
112	BOLT FOR 116	2	S.		T.B. LIST
113	LUB FITTING	7			AEMITE #1627

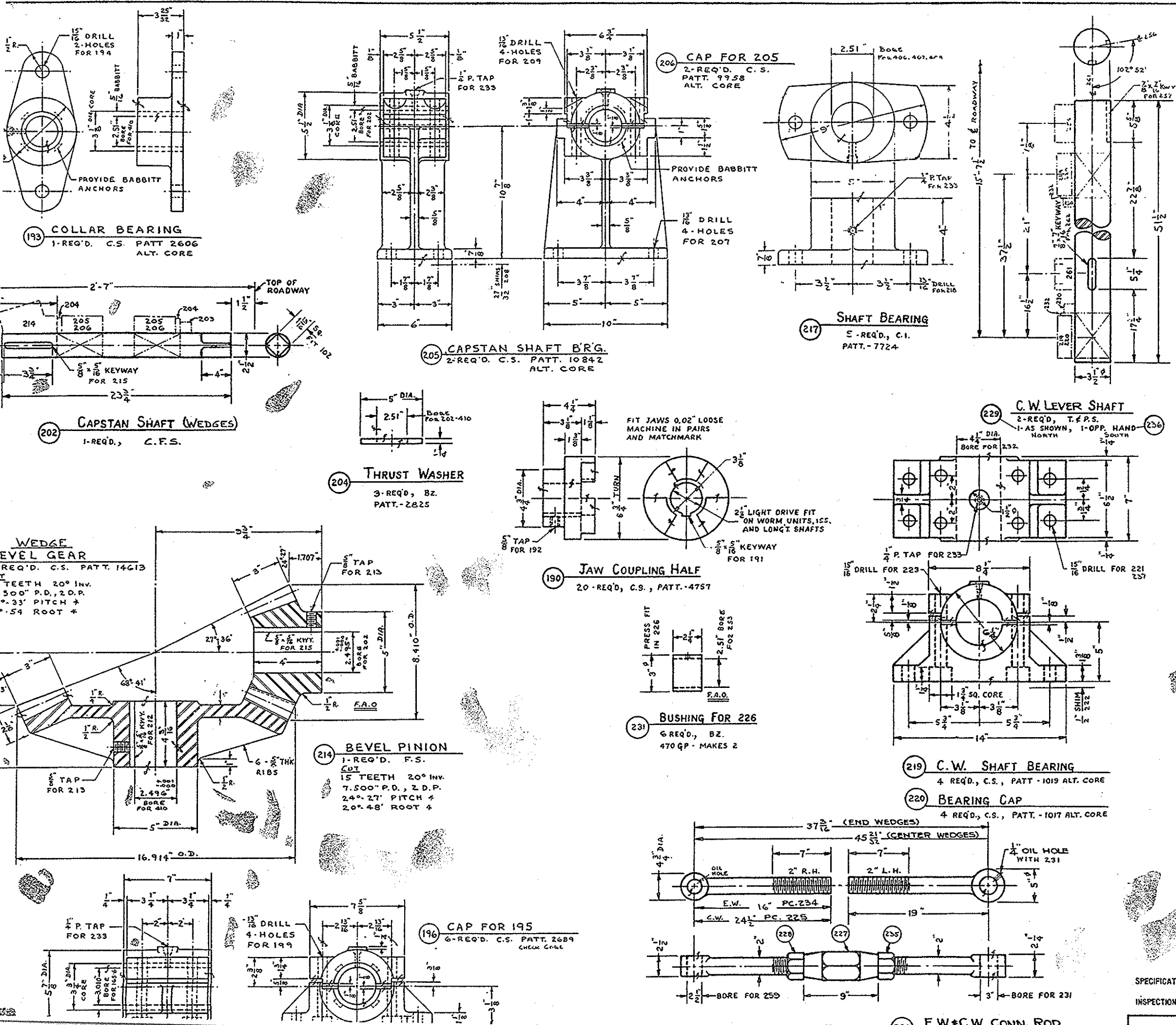
SPECIFICATIONS A.A.S.M.O. & SPECIAL PROVISIONS  
INSPECTION FROEHLING & ROBERTSON, INC.

GENERAL NOTES  
ALL STEEL CASTINGS & FORGINGS TO BE ANNEALED  
SPOT FACE FOR ALL FLAT HEADS & NUTS

S.O. D-7330 CONTRACT  
OPERATING MACHINERY  
WRIGHT MEMORIAL SWING SPAN  
OVER CURRITUCK SOUND BETWEEN  
POINT HARBOR & KITTY HAWK N.C.

THE EARLE GEAR AND MACHINE COMPAN  
4707 TO 4715 STENTON AVENUE



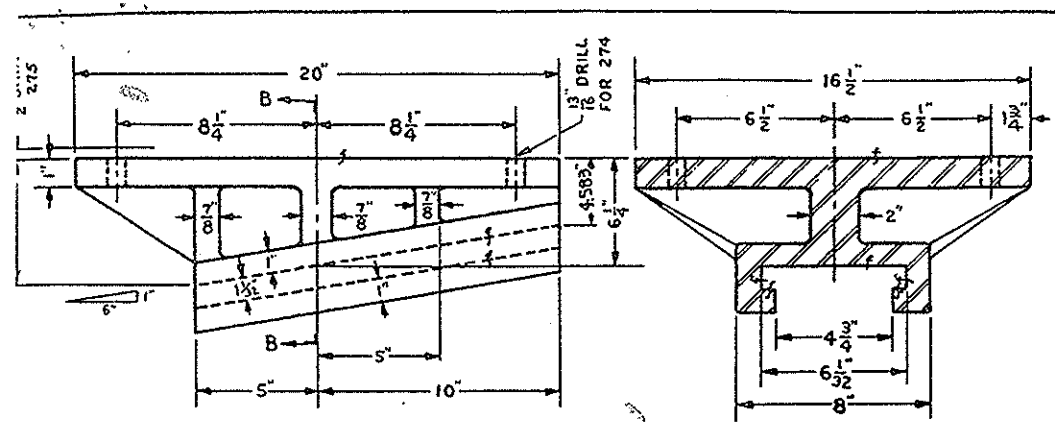


S.O. D-7330 BILL OF MATERIAL DWG. 6794 E-30

PC. NO.	NAME	QTY	MATL.	PATT.	REMARKS
190	JAW COUPLING HALF	20	C.S.	4757	
191	KEY FOR 190	20	S.		KEY LIST
192	SET SCREW FOR 190	20	S.	HOLLOW	5/8" x 3/4" CUP POINT
193	COLLAR BEARING	1	C.S.	2606	ALT. CORE
194	BOLT FOR 193	2	S.		T.B. LIST
195	CRANK SHAFT BR'G.	6	C.S.	2688	CHECK CORE
196	CAP FOR 195	6	C.S.	2689	CHECK CORE
197	BASE BOLT FOR 195	24	S.		T.B. LIST
198	SHIM FOR 195	6	S.	12" x 6 1/2" x 1/2" - 1/8" - 1/8" - 1/16"	
199	CAP BOLT FOR 195 & 196	24	S.		T.B. LIST
200	LINER FOR 195 & 196	12	FIBER	7" x 1 1/2" x 3/4"	
201					
202	CAPSTAN SHAFT	1	C.F.S.		
203	COLLAR FOR 202	1	S.	1/8" SAFETY	2 1/2" BORE x 3 1/2" O.D. x 1" THK.
204	THRUST WASHER	3	BZ.	2825	
205	CAPSTAN SHAFT BR'G.	2	C.S.	10842	ALT. CORE
206	CAP FOR 205	2	C.S.	9958	ALT. CORE
207	BOLT FOR 205	8	S.		T.B. LIST
208	SHIM FOR 205	2	S.	10" x 6" x 1/2" - 1/8" - 1/8" - 1/16"	
209	BOLT FOR 205 & 206	8	S.		T.B. LIST
210	LINER FOR 205 & 206	4	FIBER	5 1/2" x 1 1/2" x 1/2"	
211	BEVEL GEAR	1	C.S.	14613	NEW
212	KEY FOR 211	1	S.		KEY LIST
213	SET SCREW FOR 211-214	2	S.	HOLLOW	5/8" x 3/4" CUP POINT
214	BEVEL PINION	1	F.S.		
215	KEY FOR 214	1	S.		KEY LIST
216					
217	SHAFT BEARING	5	C.L.	7724	
218	BOLT FOR 217	10	S.		T.B. LIST
219	C.W. SHAFT BR'G.	4	C.S.	1019	ALT. CORE
220	BEARING CAP FOR 219	4	C.S.	1017	ALT. CORE
221	BOLT FOR 219	8	S.		T.B. LIST
222	SHIM FOR 219	4	S.	14" x 6 1/2" x 1/2" - 1/8" - 1/8" - 1/16"	
223	BOLT FOR 219 & 220	16	S.		T.B. LIST
224	LINER FOR 219 & 220	8	FIBER	7 1/2" x 1 1/2" x 1/2"	
225	C.W. CONN. ROD	2	F.S.		
226	E.W. & C.W. CONN. ROD	6	F.S.		
227	SLEEVE NUT	6	S.		2" STD.
228	NUT FOR 225 & 234	6	S.	HEX.	2" R.H. HEAVY
229	C.W. LEVER SHAFT	1	T.F.S.		AS SHOWN
230	COLLAR FOR 229	10	C.I.	HOLLOWELL SAFETY	3 1/2" BORE x 5 1/2" O.D. x 1 1/2" THK.
231	BUSHING FOR 226	6	BZ.		470 GP - MAKES 2
232	BUSHING FOR 219 & 220	4	BZ.	3870	NEW
233	LUB. FITTING	18			ALEMITE #1627
234	E.W. CONN. ROD	4	F.S.		
235	NUT FOR 226	6	S.	HEX.	2" L.H. HEAVY
236	C.W. LEVER SHAFT	1	T.F.S.		OPP. HAND
237	BASE BOLT FOR 219	8	S.		T.B. LIST

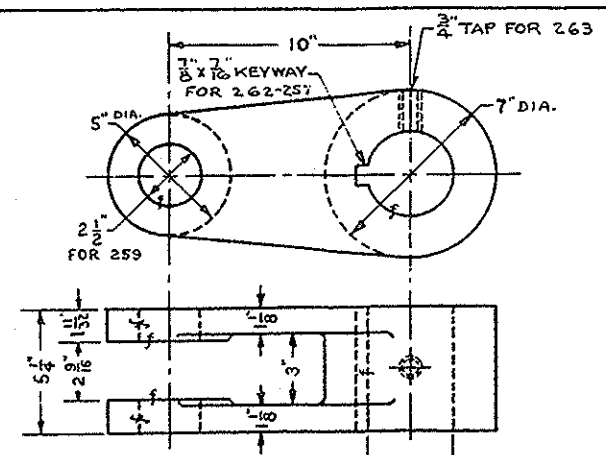
SPECIFICATIONS A.A.S.H.O. & SPECIAL PROVISIONS  
INSPECTION FROEHLING & ROBERTSON, INC.

S.O. D-7330 CONTRACT  
OPERATING MACHINERY  
WRIGHT MEMORIAL SWING SPAN  
OVER CURRITUCK SOUND BETWEEN  
POINT HARBOR & KITTY HAWK N.C.  
GENERAL NOTES  
THE EARLE GEAR AND MACHINE COMPANY

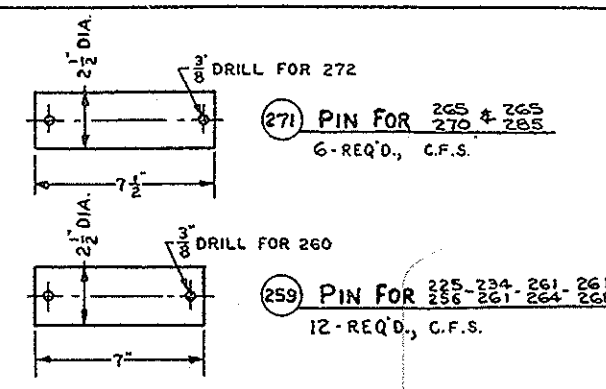


**273 CENTER WEDGE GUIDE**  
2-REQ'D, C.S., PATT-2506

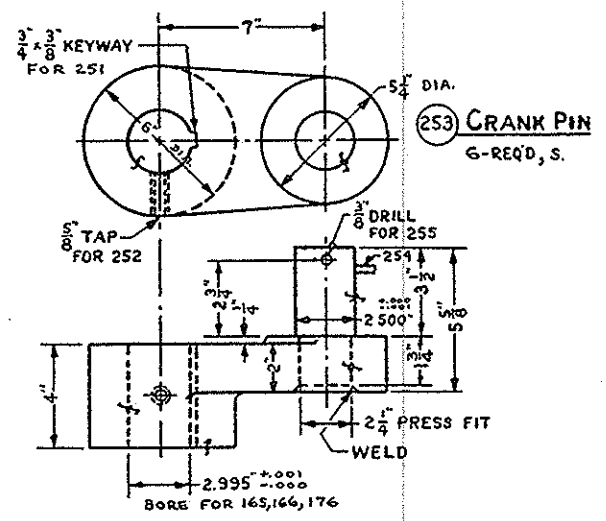
**SECTION B-B**



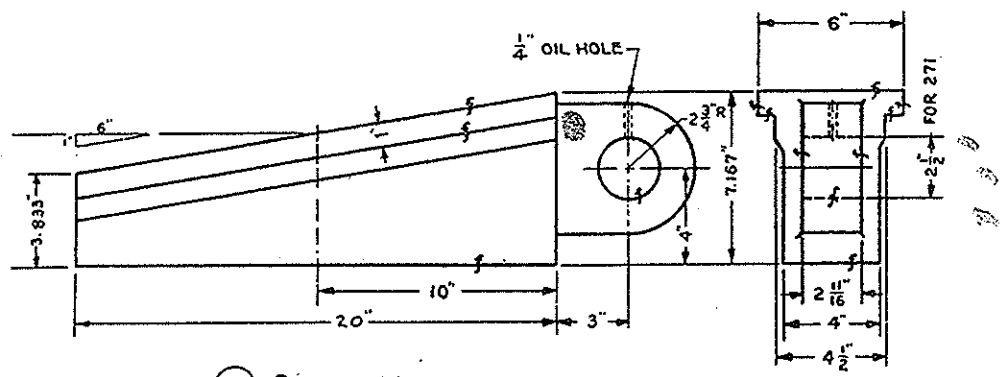
**261 E.W. & C.W. LEVER**  
10-REQ'D, C.S., PATT-6470 ALT.



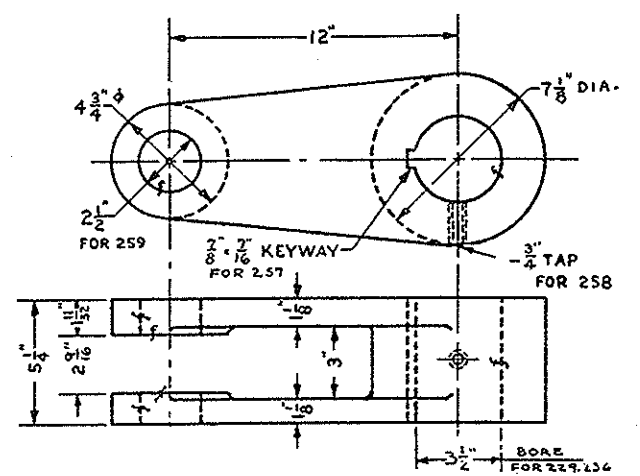
**271 PIN FOR 270 & 265**  
6-REQ'D, C.F.S.



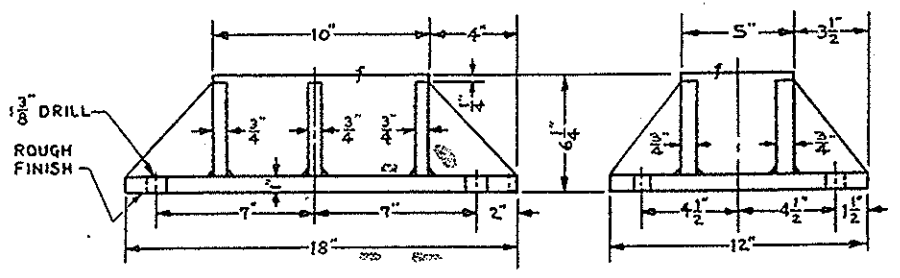
**253 CRANK PIN**  
6-REQ'D, S.



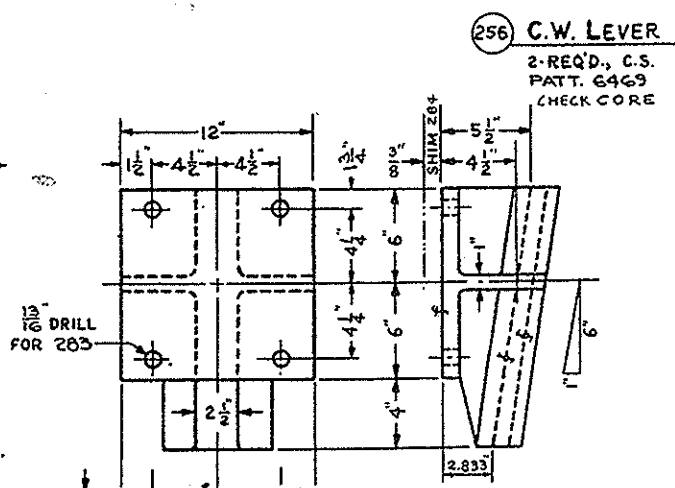
**270 CENTER WEDGE**  
2-REQ'D, C.S., PATT-7634



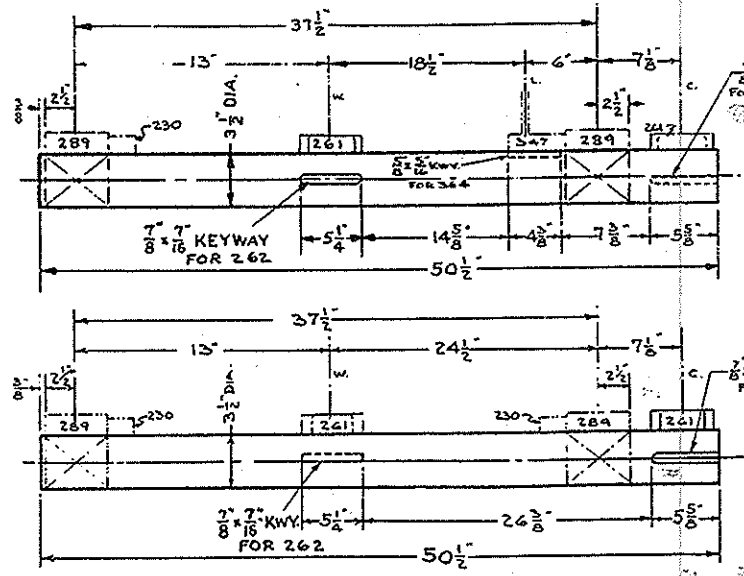
**250 E.W. & C.W. CRANK**  
6-REQ'D, C.S., PATT-1414



**276 CENTER WEDGE BASE**  
2-REQ'D, S, WELDMENT



**256 C.W. LEVER**  
2-REQ'D, C.S. PATT. 6469 CHECK CORE

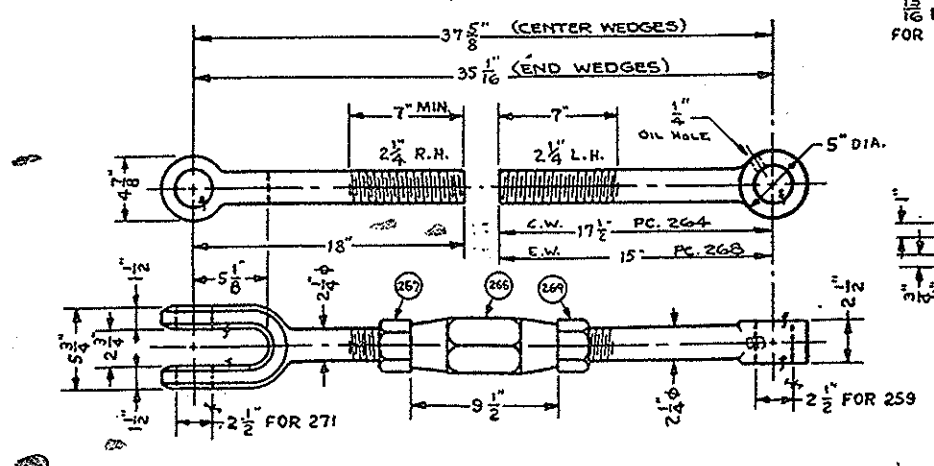


**277 END WEDGE SHAFT**  
1-REQ'D, AS SHOWN T.&R.S. N.W.

**278 END WEDGE SHAFT**  
1-REQ'D, OPP. HAND T.&R.S. N.E.

**279 END WEDGE SHAFT**  
1-REQ'D, AS SHOWN T.&R.S. S.E.

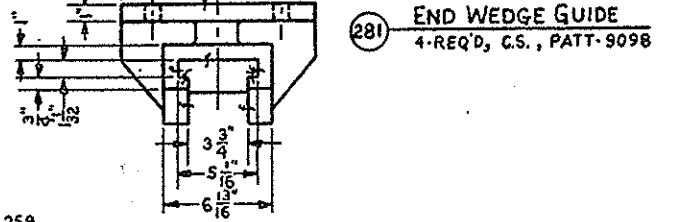
**280 END WEDGE SHAFT**  
1-REQ'D, OPP. HAND T.&R.S. S.W.



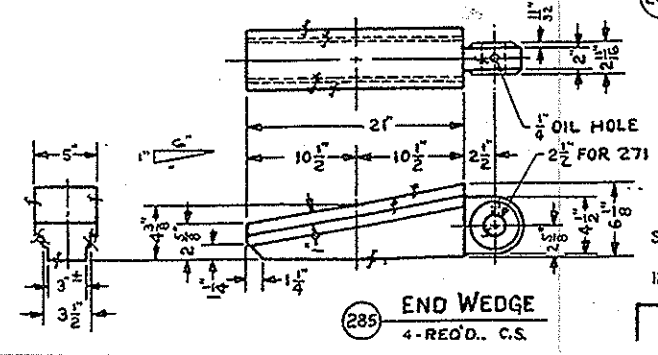
**265 EYE BAR (C.W. & E.W.)**  
6-REQ'D, F.S., MERRILL BROS.

**264 EYE BAR (C.W.)**  
2-REQ'D, F.S.

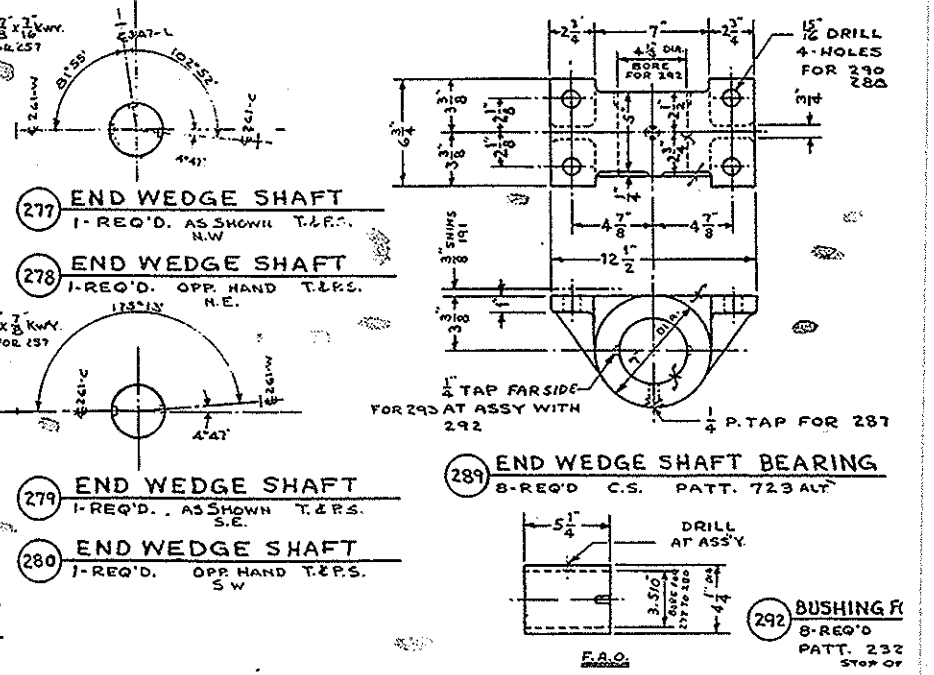
**266 EYE BAR (E.W.)**  
4-REQ'D, F.S.



**281 END WEDGE GUIDE**  
4-REQ'D, C.S., PATT-9098



**285 END WEDGE**  
4-REQ'D, C.S.



**289 END WEDGE SHAFT BEARING**  
8-REQ'D C.S. PATT. 723 ALT.

**292 BUSHING FOR 289**  
8-REQ'D C.S. PATT. 232 STOP OFF

SPECIFICATIONS A.A.S.H.O. & SPECIAL PROVISIONS  
INSPECTION FROEHLING & ROBERTSON, INC.

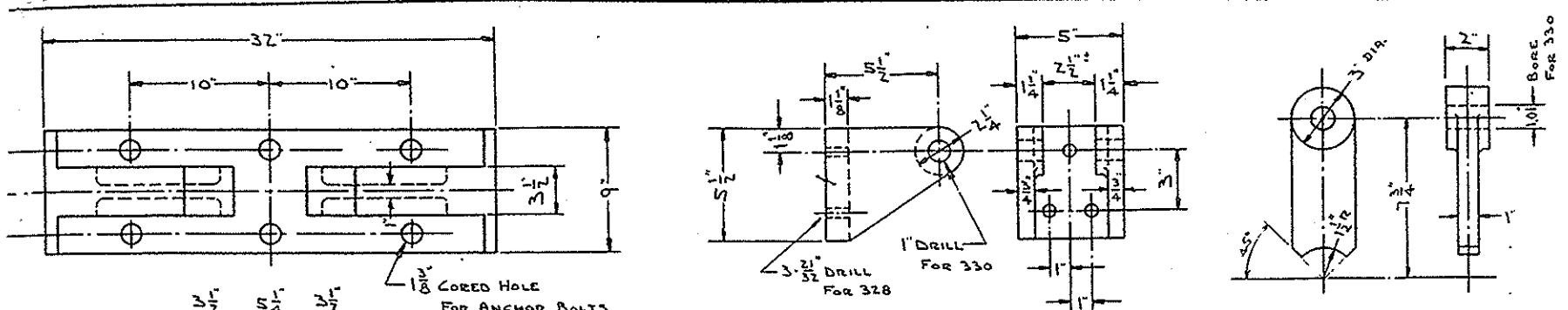
**GENERAL NOTES**

ALL OTHER PARTS & ENDINGS TO BE UNPAID FOR

PC.NO.	NAME	QTY.	MAT'L.	PATT.	REMARKS
250	E.W. & C.W. CRANK	6	C.S.	1414	
251	KEY FOR 250	6	S.		KEY LIST
252	SET SCREW FOR 250	6	S.	HOLLOW	3/8" x 1 1/2" CUP POINT
253	CRANK PIN	6	S.		
254	WASHER FOR 253	6	S.		2 1/2" COMMON
255	COTTER FOR 253	6	S.		3/8" x 3 1/2"
256	C.W. LEVER	2	C.S.	6469	CHECK CORE
257	KEY FOR 256 & 241	4	S.		KEY LIST
258	SET SCREW FOR 256	2	S.	HOLLOW	3/4" x 1 1/2" CUP POINT
259	PIN FOR 258 & 261	12	C.F.S.		
260	COTTER FOR 259	24	S.		3/8" x 3 1/2"
261	C.W. LEVER	10	C.S.	6470	ALT.
262	KEY FOR 261	6	S.		KEY LIST
263	SET SCREW FOR 261	10	S.	HOLLOW	3/4" x 1 1/2" CUP POINT
264	EYE BAR (C.W.)	2	F.S.		
265	EYE BAR (C.W. & E.W.)	6	F.S.		MERRILL BROS.
266	SLEEVE NUT	6	F.S.	STD.	2 1/2" x 9 1/2"
267	NUT FOR 265	6	S.	HEX	2 1/4" R.H. HEAVY
268	EYE BAR (E.W.)	4	F.S.		
269	NUT FOR 264 & 268	6	S.	HEX.	2 1/4" L.H. HEAVY
270	CENTER WEDGE	2	C.S.	7634	
271	PIN FOR 270 & 265	6	C.F.S.		
272	COTTER FOR 271	12	S.		3/8" x 3 1/2"
273	C.W. GUIDE	2	C.S.	2506	
274	BOLT FOR 273	8	S.		T.B. LIST
275	SHIM FOR 273	2	S.	20" x 16 1/2"	1/4" - 1/8" - 1/8" - 1/8" - 1/8"
276	C.W. BASE	2	S.		WELDMENT
277	END WEDGE SHAFT	1	T.&R.S.		AS SHOWN
278	END WEDGE SHAFT	1	T.&R.S.		OPP. SHOWN
279	END WEDGE SHAFT	1	T.&R.S.		AS SHOWN
280	END WEDGE SHAFT	1	T.&R.S.		OPP. SHOWN
281	END WEDGE GUIDE	4	C.S.	9098	
282	END WEDGE BASE	4	S.		WELDMENT
283	BOLT FOR 281	16	S.		T.B. LIST
284	SHIM FOR 281	4	S.	12" x 12"	1/4" - 1/8" - 1/8" - 1/8"
285	END WEDGE	4	C.S.	6030	
286					
287	LUB. FITTING FOR 289	8			ALEMITE # 1627
288	BOLT FOR 289	16	S.		T.B. LIST
289	E.W. SHAFT BEARING	8	C.S.	723	ALT.
290	BOLT FOR 289	16	S.		T.B. LIST
291	SHIM FOR 289	8	S.	12 1/2" x 6 1/2"	1/4" - 1/8" - 1/8" - 1/8"
292	BUSHING FOR 289	8	BZ.	2326	STOP OFF
293	KEY SCREW FOR 289 & 292	16	S.	HOLLOW	1/2" x 1/2" CUP PT.

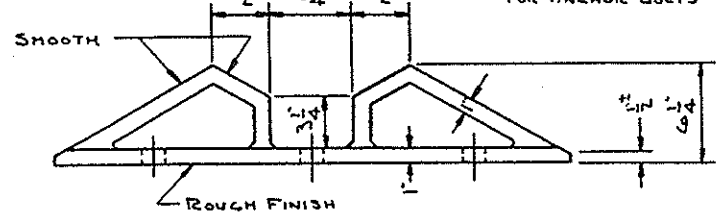
S.O. D-7330 CONTRACT  
OPERATING MACHINERY  
WRIGHT MEMORIAL SWING SPA  
OVER CURRITUCK SOUND BETWEEN  
POINT HARBOR & KITTY HAWK

THE EARLE GEAR AND MACHINE COMP.  
4707 TO 4715 STENTON AVENUE

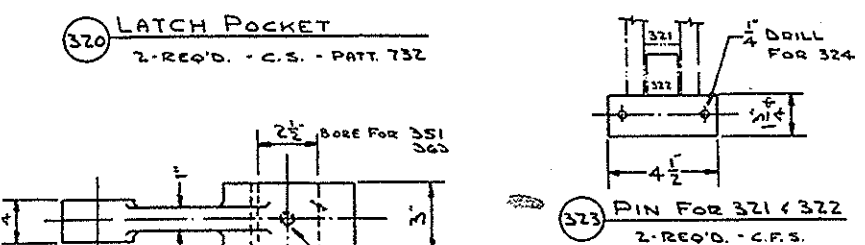


327 LATCH PAWL BRACKET  
2-REQ'D. - C.S. - PATT. 2964

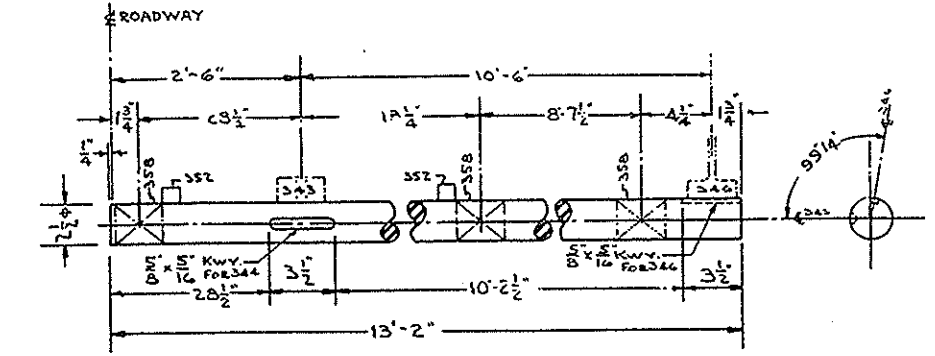
329 LATCH PAWL  
2-REQ'D. - C.S. - PATT. 3022



320 LATCH POCKET  
2-REQ'D. - C.S. - PATT. 732

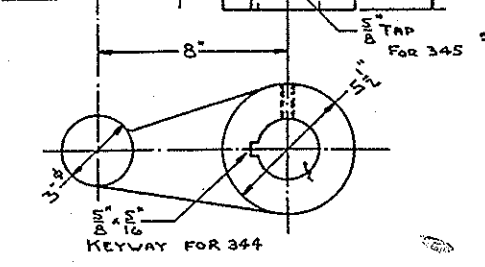


323 PIN FOR 321 & 322  
2-REQ'D. - C.F.S.

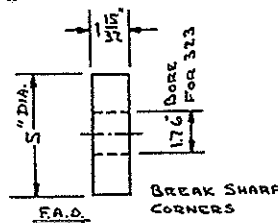


351 LATCH SHAFT  
1-REQ'D. - C.F.S. AS SHOWN - N.E.

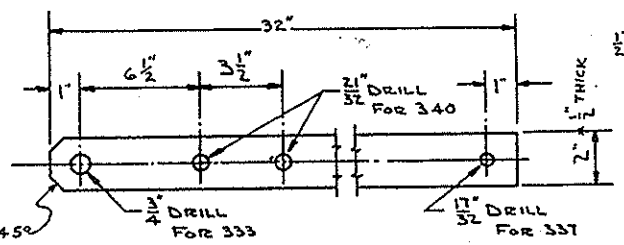
363 LATCH SHAFT  
1-REQ'D. - C.F.S. OPP. SHOWN - N.W.



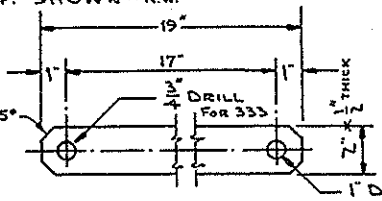
343 LATCH TRIP LEVER  
2-REQ'D. - C.S. - PATT. 2605 CHECK CORE



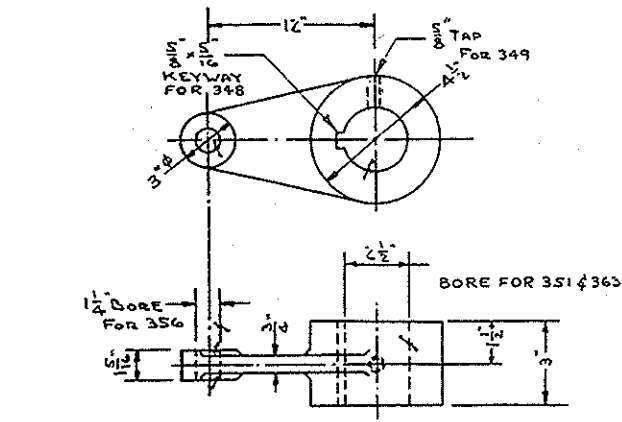
322 LATCH ROLLER  
2-REQ'D. - S.



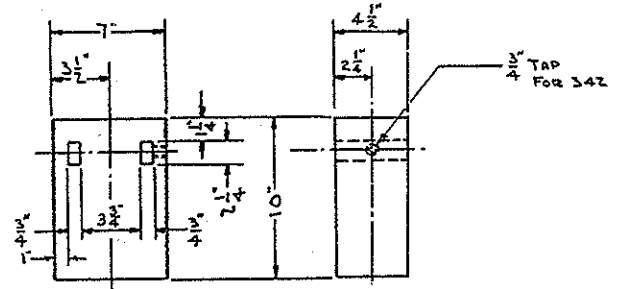
336 LATCH CTWT. BAR  
4-REQ'D. - S.



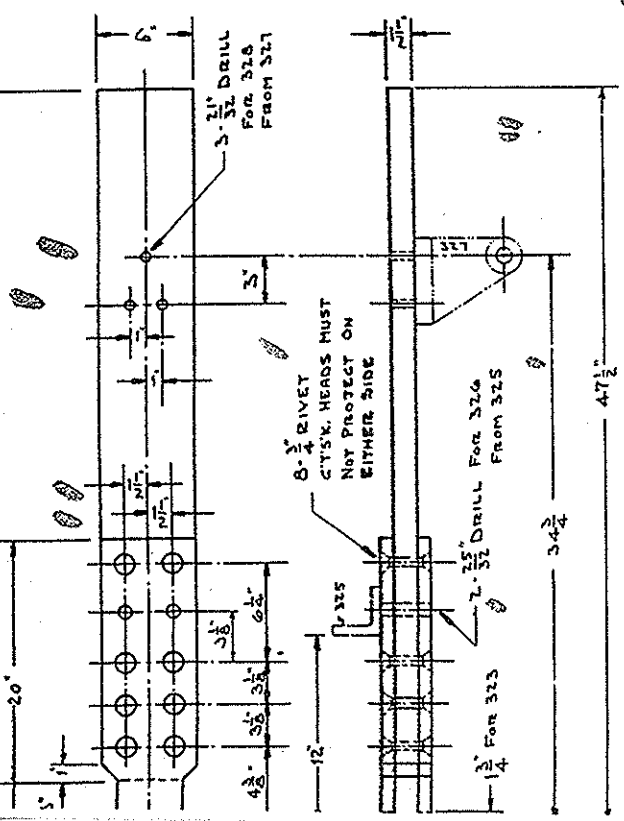
332 LATCH CTWT. LINK  
4-REQ'D. - S.



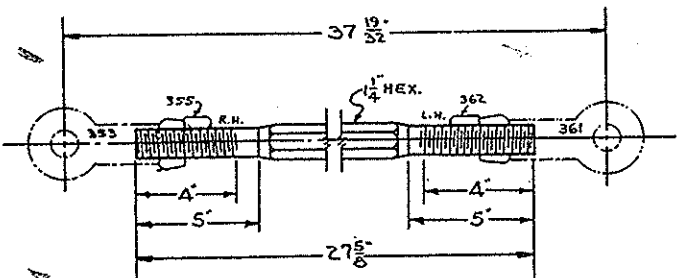
344 LATCH LEVER  
2-REQ'D. - C.S. - PATT. 10234



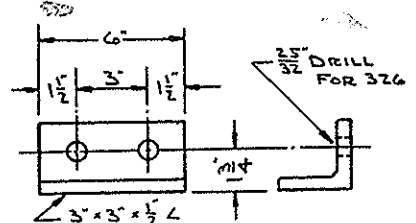
341 LATCH COUNTERWEIGHT  
2-REQ'D. - C.I. - PATT. 380 ALT. CORES



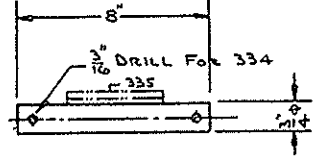
354 LATCH DRIVE LINK  
2-REQ'D. - H.R.S.



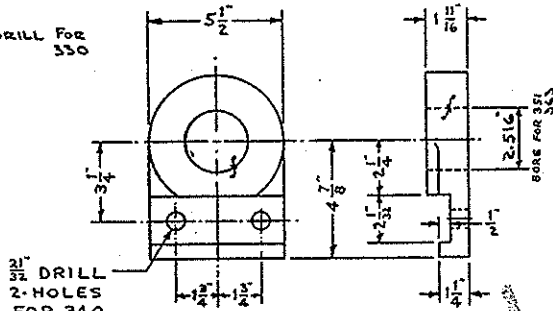
353 LATCH CLEVIS  
2-REQ'D. - S. - MERRILL BROS.



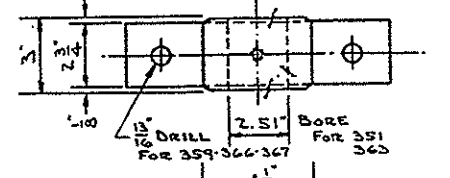
325 LATCH STOP  
2-REQ'D. - S.



330 PIN FOR 327-329-332  
2-REQ'D. - C.F.S.

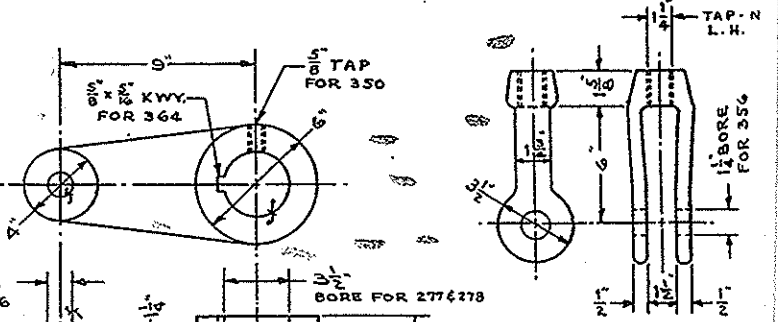


339 COUNTERWEIGHT HUB  
4-REQ'D. - C.S. - PATT. 9701

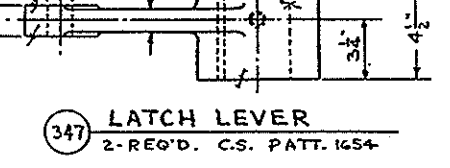


358 LATCH SHAFT BEARING  
6-REQ'D. - C.I. - PATT. 1479 ALT.

S.O. D-7330 BILL OF MATERIAL DWG. 6796 E-30				
P. No.	NAME	QTY.	MATL. PATT.	REMARKS
320	LATCH POCKET	2	C.S. 732	
321	LATCH BAR	2	S.	
322	LATCH ROLLER	2	S.	
323	PIN FOR 321 & 322	2	C.F.S.	
324	COTTER FOR 323	4	S.	1/4 x 3"
325	LATCH STOP	2	S.	
326	BOLT FOR 325	4	S. HEX. NO. MACH.	3/4 x 5" HEX. NUT & L.W.
327	LATCH PAWL BRK.	2	C.S. 2964	
328	BOLT FOR 327	6	S. HEX. NO. MACH.	5/8 x 3 1/2" HEX. NUT & L.W.
329	LATCH PAWL	2	C.S. 3022	
330	PIN FOR 327-329-332	2	C.F.S.	
331	COTTER FOR 330	4	S.	3/16 x 1 1/4"
332	LATCH CTWT. LINK	4	S.	
333	PIN FOR 332 & 336	2	C.F.S.	
334	COTTER FOR 333	4	S.	3/16 x 1 1/2"
335	SPACER FOR 333	2	S. STD. PIPE	3/4 x 4" FENOS - NO TND.
336	LATCH CTWT. BAR	4	S.	
337	BOLT FOR 336	2	S.	
338	NUT FOR 337	8	S. HEX.	1/2" AMER. STD. REG.
339	CTWT. HUB	4	C.S. 9701	
340	BOLT FOR 339	8	S. HEX. NO. MACH.	5/8 x 2 1/4" HEX. NUT & L.W.
341	LATCH CTWT.	2	C.I. 380	ALT. CORES
342	SET SCREW FOR 341	2	S. HOLLOW	3/4 x 1" CUP POINT
343	LATCH TRIP LEVER	2	C.S. 2605	CHECK CORE
344	KEY FOR 343	2	S.	KEY LIST
345	SET SCREW FOR 343	2	S. HOLLOW	5/8 x 1 1/2" CUP POINT
346	LATCH LEVER	2	C.S. 10294	
347	LATCH LEVER	2	C.S. 1654	
348	KEY FOR 346	2	S.	KEY LIST
349	SET SCREW FOR 346	2	S. HOLLOW	5/8 x 1" CUP POINT
350	SET SCREW FOR 347	2	S. HOLLOW	5/8 x 1 1/4" CUP POINT
351	LATCH SHAFT	1	C.F.S.	AS SHOWN
352	COLLAR FOR 351 & 363	4	S. L.B. SAFETY	2 1/2" I.D. x 3 1/2" O.D. x 1" TH
353	LATCH CLEVIS	2	S.	MERRILL BROS. (THREA)
354	LATCH DRIVE LINK	2	H.R.S.	
355	NUT FOR 354	2	S. HEX.	1 1/2" AM. STD. HEAVY (THREA)
356	PIN FOR 349-353-347-361	4	C.F.S.	
357	COTTER FOR 356	8	S.	1/4 x 2"
358	LATCH SHAFT BRG.	6	C.I. 1479	ALT.
359	BOLT FOR 358	4	S.	T.B. LIST
360	SHIM FOR 358	6	S.	11" x 2 1/2" x 1/8" - 1/8" - 1/16"
361	LATCH CLEVIS	2	S.	MERRILL BROS. (THREA)
362	NUT FOR 354	2	S. HEX.	1 1/2" AM. STD. HEAVY (THREA)
363	LATCH SHAFT	1	C.F.S.	OPP. SHOWN
364	KEY FOR 347	2	S.	KEY LIST
365	LUB. FITTING FOR 358	6	S.	ALEMITE #1627
366	BOLT FOR 358	4	S.	T.B. LIST
367	BOLT FOR 358	4	S.	T.B. LIST
368				

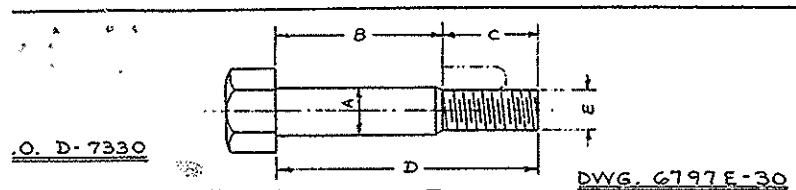


361 LATCH CLEVIS  
2-REQ'D. - S. MERRILL BROS.



347 LATCH LEVER  
2-REQ'D. - C.S. PATT. 1654

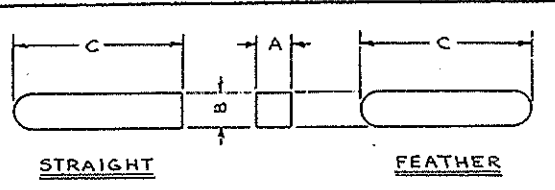
S.O. D-7330 CONTRACT  
LATCH MACHINERY  
WRIGHT MEMORIAL SWING SP/ OVER CURRITUCK SOUND BETW POINT HARBOR & KITTY HAWK N  
SPECIFICATIONS A.A.S.H.O. & SPECIAL PROVISIONS  
INSPECTION FROENLING & ROBERTSON, INC.  
GENERAL NOTES  
ALL STEEL CASTINGS & FORGINGS TO BE ANNEALED  
THE EARLE GEAR AND MACHINE COMP/ 4707 TO 4715 STENTON AVENUE



**TURND BOLT LIST**

HEAD	QTY	A	B	C	D	E	FOR	REMARKS	NUTS	L.W.	B.W.	C.W.
HEX.	8	1 1/2"	2 1/2"	1 1/2"	4 1/2"	3/8"	144	FLANGE BOLT	8	8		
SQ.	8	1 1/2"	7 1/2"	3"	10 1/2"	1 1/4"	23	CAP BOLT	16			
SQ.	4	3/16"	4 1/2"	2"	6 1/2"	3/4"	71		8			
SQ.	24	1 1/2"	4 1/2"	2"	6 1/2"	3/4"	195		48			
SQ.	16	1 1/2"	5 1/2"	2 1/2"	8"	7/8"	219		32			
HEX.	8	1 1/2"	4 1/2"	2"	6 1/2"	3/4"	203		16			
HEX.	8	1 1/2"	4 1/2"	1 1/2"	6 1/2"	3/8"	12	BASE BOLT	8	8		
HEX.	12	1 1/2"	3 1/2"	2 1/2"	5 1/2"	1"	23		24			48
HEX.	8	1 1/2"	2 1/2"	1 1/2"	3 1/2"	3/4"	37		8	8		
HEX.	16	1 1/2"	2 1/2"	1 1/2"	3 1/2"	3/4"	37		16	16		
HEX.	4	1 1/2"	2 1/2"	2"	4 1/2"	3/4"	70	BASE BOLT	8			
HEX.	4	1 1/2"	1 1/2"	1 1/2"	3 1/2"	3/8"	95		4	4		4
HEX.	6	1 1/2"	3"	1 1/2"	4 1/2"	3/8"	109		6	6		6
HEX.	2	1 1/2"	7/8"	1 1/2"	2"	5/8"	116		2	2		
HEX.	6	1 1/2"	2 1/2"	1 1/2"	4"	3/4"	155	BASE BOLT	6	6		6
HEX.	24	1 1/2"	2 1/2"	1 1/2"	3 1/2"	3/4"	195		24	24		24
HEX.	2	1 1/2"	1 1/2"	1 1/2"	3 1/2"	3/8"	193	BASE BOLT	2	2		
HEX.	24	1 1/2"	1 1/2"	1 1/2"	3 1/2"	3/8"	195		24	24		24
HEX.	8	1 1/2"	2 1/2"	1 1/2"	3 1/2"	3/4"	205		8	8		8
HEX.	10	1 1/2"	1 1/2"	1 1/2"	2 1/2"	3/4"	217		10	10		
HEX.	8	1 1/2"	2 1/2"	2 1/2"	4 1/2"	7/8"	219		16			8
HEX.	8	1 1/2"	2 1/2"	2 1/2"	4 1/2"	7/8"	219		16			8
HEX.	8	1 1/2"	3 1/2"	1 1/2"	5"	3/4"	273	BASE BOLT	8	8		
HEX.	16	1 1/2"	2 1/2"	1 1/2"	3 1/2"	3/4"	281		16	16		16
HEX.	16	1 1/2"	1 1/2"	1 1/2"	2 1/2"	3/8"	289		16			16
HEX.	16	1 1/2"	1 1/2"	1 1/2"	2 1/2"	3/8"	289		16			16
HEX.	4	1 1/2"	1 1/2"	1 1/2"	3 1/2"	3/4"	358	BASE BOLT	4	4		
HEX.	4	1 1/2"	1 1/2"	1 1/2"	3 1/2"	3/4"	358		4	4		8
HEX.	4	1 1/2"	3 1/2"	1 1/2"	4 1/2"	3/4"	358		4	4		8
HEX.	12	1 1/2"	2 1/2"	1 1/2"	3 1/2"	3/4"	402	BASE BOLT	12	12		

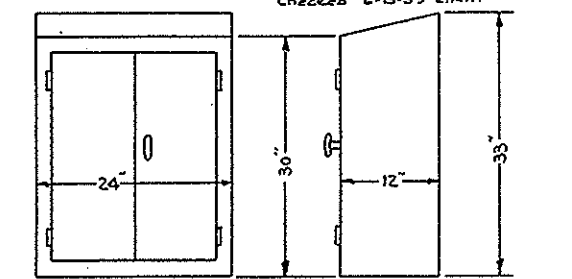
Checked 6-14-59 R.A.P.



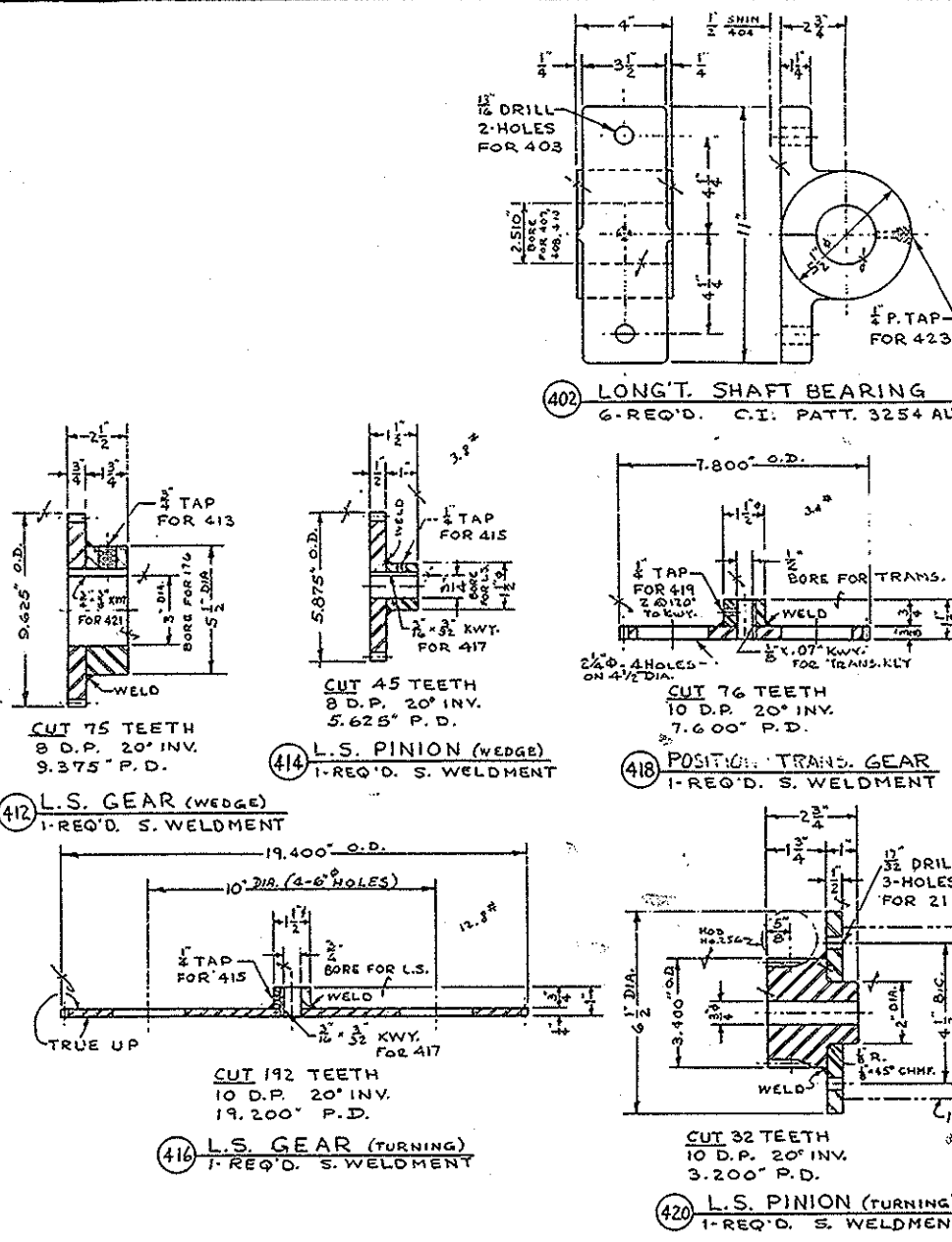
**KEY LIST**

P. No.	KIND	QTY	A	B	C	FOR	ON
17	STRAIGHT	2	1 1/2"	1 1/4"	6 3/8"	16	19
34	STRAIGHT	4	3/4"	3/4"	3 3/8"	243	1412
51	STRAIGHT	2	1 1/4"	1 1/4"	7 1/4"	50	19
54	STRAIGHT	1	7/8"	7/8"	6 3/8"	53	76
86	FEATHER	2	3/8"	3/8"	3"	85	91
89	FEATHER	1	3/8"	3/8"	3"	88	91
106	FEATHER	2	3/8"	3/8"	5 3/4"	77	76
107	STRAIGHT	1	7/8"	7/8"	4"	78	109
113	STRAIGHT	1	1/2"	1/2"	3"	112	109
141	FEATHER	1	7/8"	7/8"	3 1/2"	140	76
144	FEATHER	1	5/8"	5/8"	4 3/8"	143	146
159	STRAIGHT	1	3/8"	3/8"	2 1/8"	158	155
168	STRAIGHT	12	3/4"	3/4"	3 1/2"	167	167
191	STRAIGHT	20	5/8"	5/8"	3 3/8"	190	190
212	FEATHER	1	5/8"	5/8"	4 1/4"	211	410
215	FEATHER	1	5/8"	5/8"	3 3/4"	214	202
251	STRAIGHT	6	3/4"	3/4"	3 3/8"	250	152
257	STRAIGHT	6	7/8"	7/8"	5 3/8"	256	261
262	FEATHER	6	7/8"	7/8"	5 1/4"	261	261
344	FEATHER	2	5/8"	5/8"	3 1/2"	343	351
348	STRAIGHT	2	5/8"	5/8"	3 1/2"	346	351
364	FEATHER	2	5/8"	5/8"	4 3/8"	347	278
421	FEATHER	1	3/4"	3/4"	3 1/2"	412	176
417	SA. BOTH ENDS	2	3/16"	3/16"	2 1/2"	414	416

Checked 6-15-59 R.A.P.



426 TOOL CABINET  
1-REQ'D. S. HALLOWELL #330-1224



414 L.S. PINION (WEDGE)  
1-REQ'D. S. WELDMENT

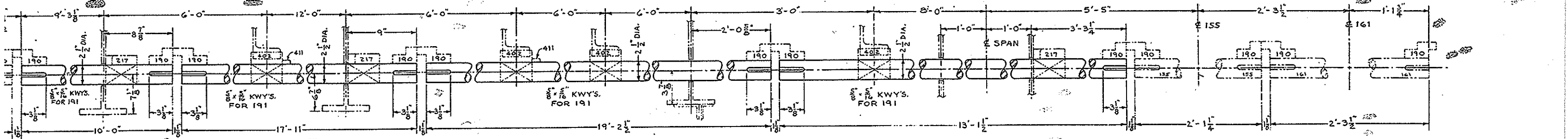
418 POSITION: TRANS. GEAR  
1-REQ'D. S. WELDMENT

416 L.S. GEAR (TURNING)  
1-REQ'D. S. WELDMENT

420 L.S. PINION (TURNING)  
1-REQ'D. S. WELDMENT

**BILL OF MATERIAL**

R. N.	NAME	QTY	MATL.	PATT.	REMARKS
400					
401					
402	LONG'T. SHAFT BRG.	6	C.I.	3254	ALT. CORE
403	BASE BOLT FOR 402	12	S.		T. B. LIST
404	SHIM FOR 402	6	S.	3 1/2" x 11"	1/2" x 1/4" x 1/8" x 1/16"
405					
406	LONG'T. SHAFT	2	C.F.S.		
407	LONG'T. SHAFT	2	C.F.S.		
408	LONG'T. SHAFT	1	C.F.S.		
409	LONG'T. SHAFT	1	C.F.S.		
410	LONG'T. SHAFT	1	C.F.S.		
411	COLLAR FOR 407, 408 & 410	4	S.	1.8.58FTH	2 1/2" I.D. x 3 1/2" O.D. x 1" TH
412	L.S. GEAR (WEDGE)	1	S.		WELDMENT
413	SET SCREW FOR 412	1	S.	HOLLOW	3/4" x 3/8" CUP-POI
414	L.S. PINION (WEDGE)	1	S.		WELDMENT
415	SET SCREW FOR 414	2	S.	HOLLOW	1/2" x 5/16" CUP-POI
416	L.S. GEAR (TURNING)	1	S.		WELDMENT
417	KEY FOR 414 & 416	2	S.		KEY LIST
418	POSITION: TRANS. GEAR	1	S.		WELDMENT
419	SET SCREW FOR 418	2	S.	HOLLOW	1/2" x 1/2" CUP-POI
420	L.S. PINION (TURNING)	1	S.		WELDMENT
421	KEY FOR 412	1	S.		KEY LIST
422					
423	LUB. FITTING FOR 402	6			1/2" RT. ALEMITE #1627
424					
425					
426	TOOL CABINET	1	S.		HALLOWELL #330-1224
427	ENG. WRENCH-15" SINGLE	1	S.		#18 3 1/2"
428	ENG. WRENCH-15" SINGLE	1	S.		#17 3 1/8"
429	ENG. WRENCH-15" SINGLE	1	S.		#12 2"
430	ENG. WRENCH-15" SINGLE	1	S.		#10 1 1/2"
431	ENG. WRENCH-15" DOUBLE	1	S.		#39A 1 1/2" - 1 1/2"
432	ENG. WRENCH-15" DOUBLE	1	S.		#39 1 1/2" - 1 1/2"
433	ENG. WRENCH-15" DOUBLE	1	S.		#735 1" - 1 1/2"
434	ENG. WRENCH-15" DOUBLE	1	S.		#34 2 1/2" - 1 1/2"
435	ENG. WRENCH-15" DOUBLE	1	S.		#31B 2 1/2" - 1 1/2"
436					
437	HEX. SOCKET KEY	1	S.	SHORT ARM	1/2" ACROSS FLATS
438	HEX. SOCKET KEY	1	S.	SHORT ARM	3/4" ACROSS FLATS
439	HEX. SOCKET KEY	1	S.	SHORT ARM	5/8" ACROSS FLATS
440	HEX. SOCKET KEY	1	S.	SHORT ARM	3/8" ACROSS FLATS
441					
442					
443					
444					
445	GREASE GUN	1			ALEMITE #4017
446	HOSE ASSEMBLY	1			ALEMITE #6654-A
447					



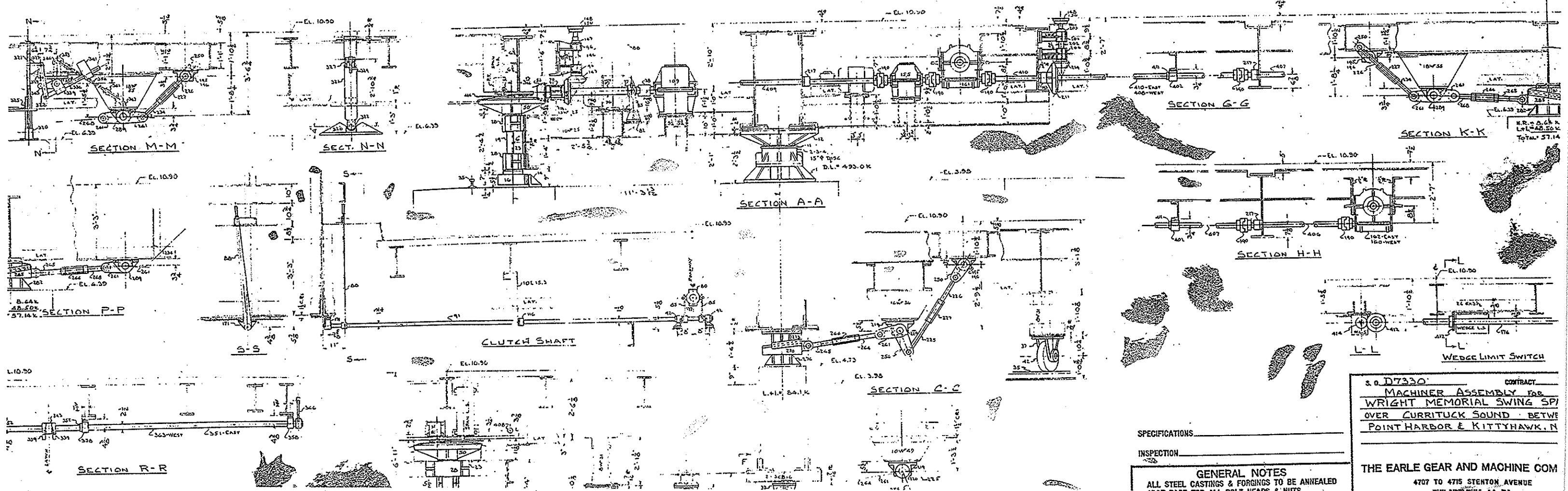
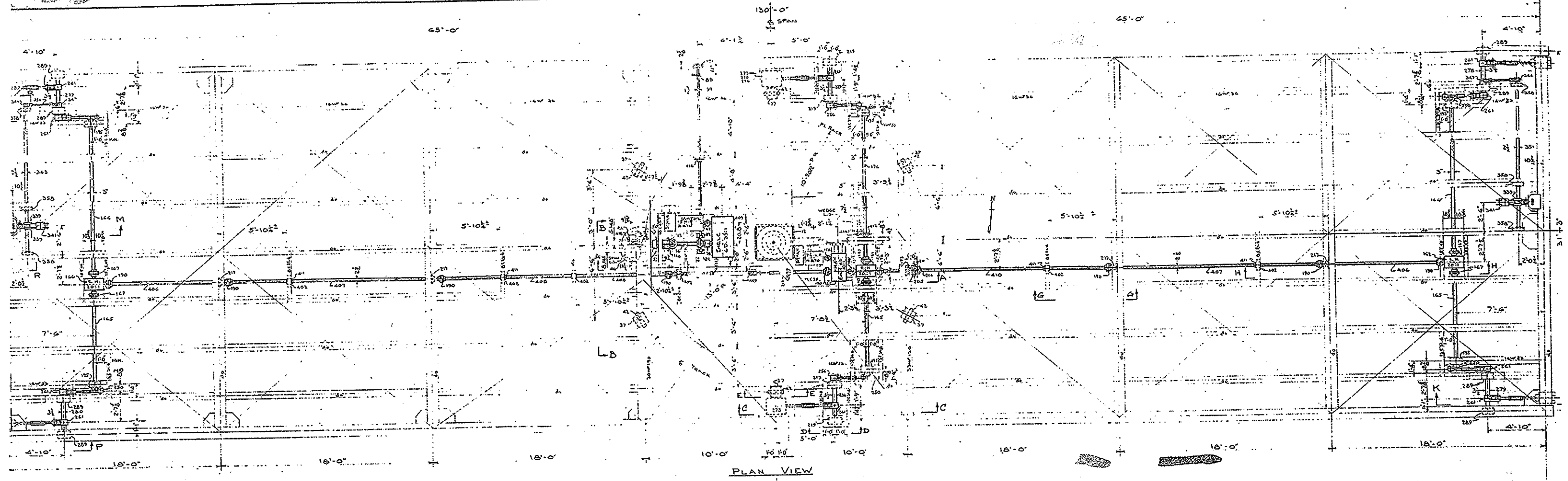
**GENERAL NOTES**

ALL STEEL CASTINGS & FORGINGS TO BE ANNEALED

S.O.D.-7330 CONTRACT  
MISC. DETAILS

WRIGHT MEMORIAL SWING SPAN  
OVER CURRITUCK SOUND BETWEEN  
POINT HARBOR & KITTY HAWK N.

THE EARLE GEAR AND MACHINE COMPA  
4707 TO 4715 STENTON AVENUE



SPECIFICATIONS \_\_\_\_\_  
 INSPECTION \_\_\_\_\_  
**GENERAL NOTES**  
 ALL STEEL CASTINGS & FORGINGS TO BE ANNEALED

CONTRACT \_\_\_\_\_  
 s.o. D7330  
**MACHINER ASSEMBLY FOR**  
**WRIGHT MEMORIAL SWING SPI**  
**OVER CURRITUCK SOUND BETWEEN**  
**POINT HARBOR & KITTYHAWK, N.C.**  
**THE EARLE GEAR AND MACHINE CO.**  
 4707 TO 4715 STENTON AVENUE