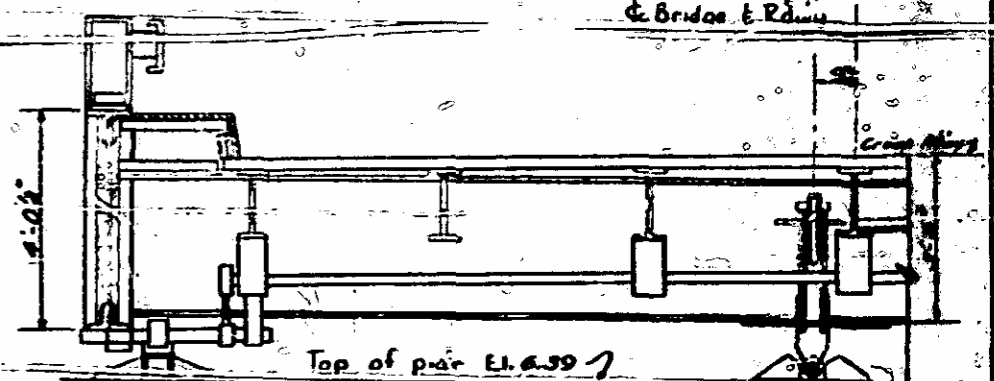
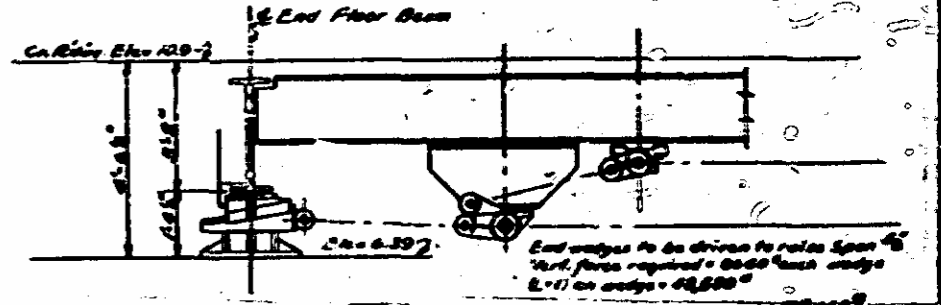


PART PLAN MACHINERY

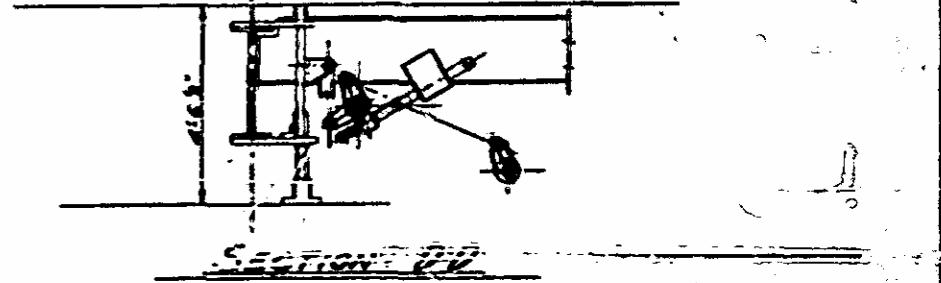
**Note:** Wedge and latch machinery to be designed so that in event of failure of limit switches, the machinery will not be damaged by over-driving.



SECTION C-C

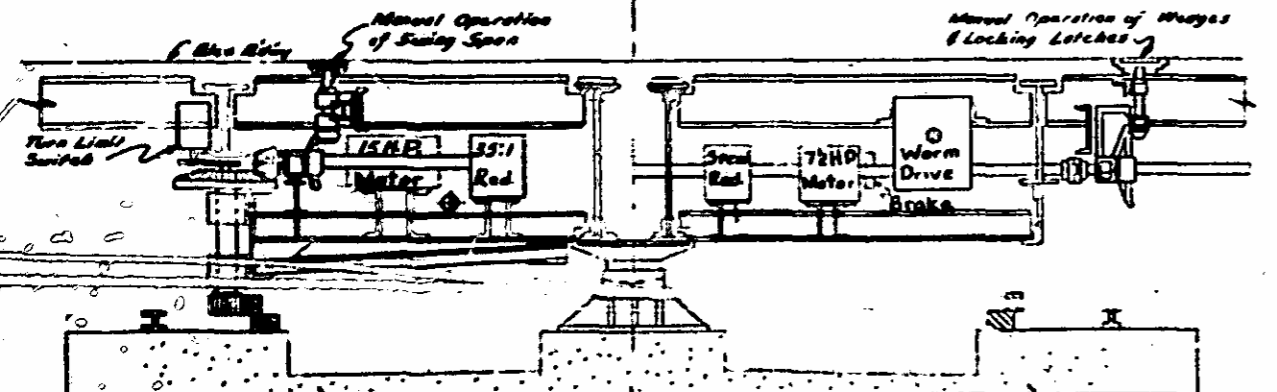


ELEVATION END OF SWING SPAN

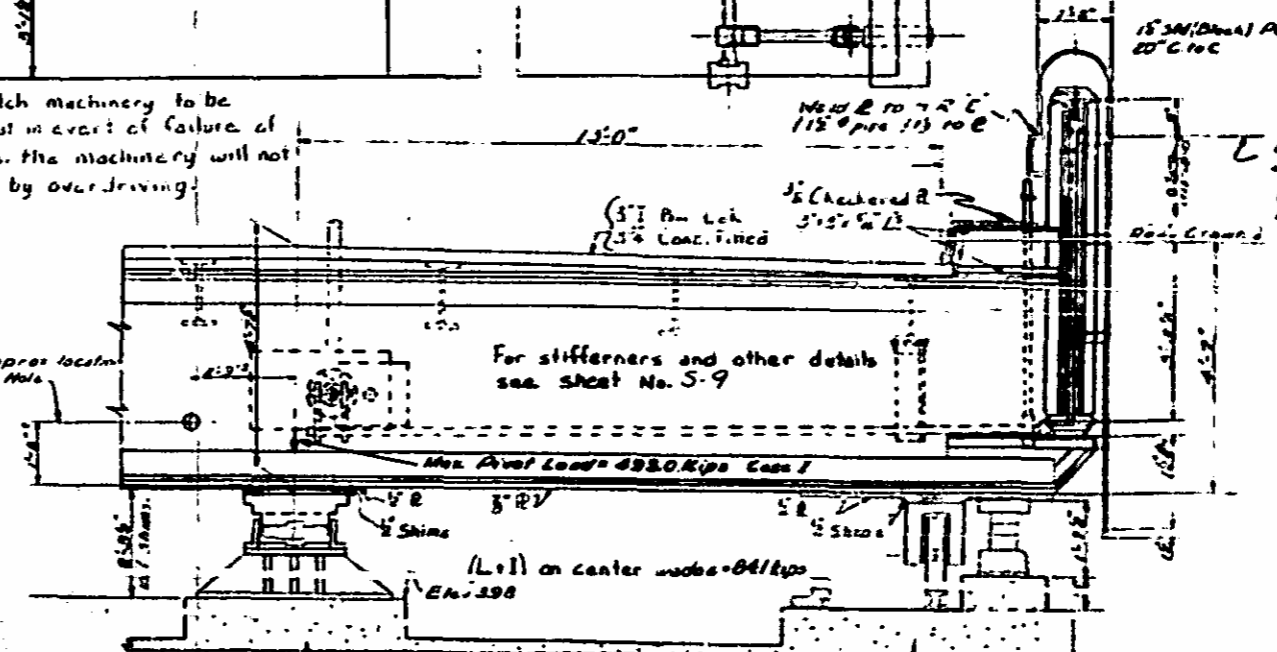


SECTION B-B

Revision 1 to change size of floor beam number 6 westside only to 50 in 172.4.2



SECTION A-A



PROJECT NO. B.11197

DARE COUNTY

STATION 107+40

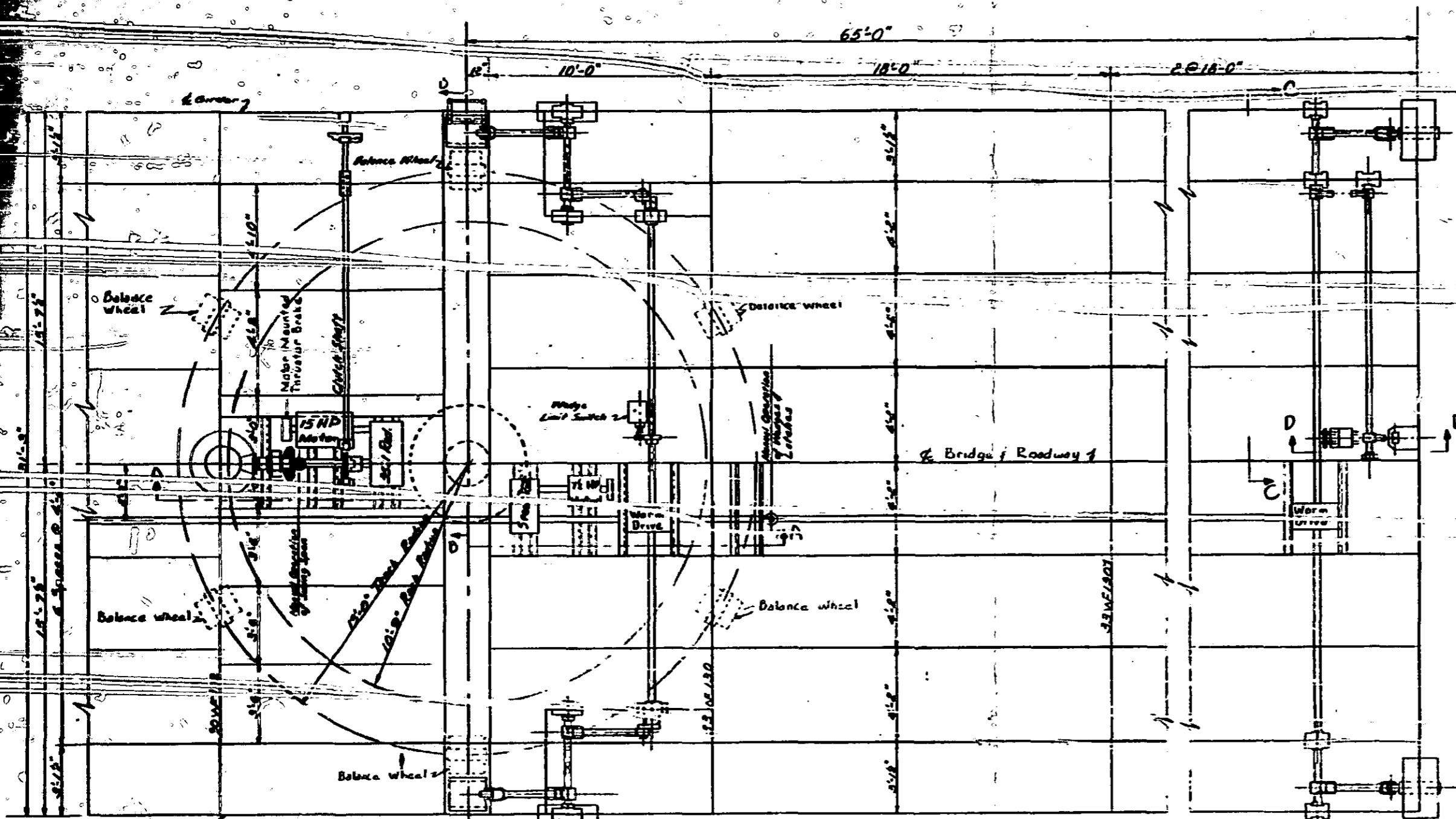
WRIGHT MEMORIAL BRIDGE

STATE OF NORTH CAROLINA STATE HIGHWAY COMMISSION

MACHINERY LAYOUT FOR SWING SPAN

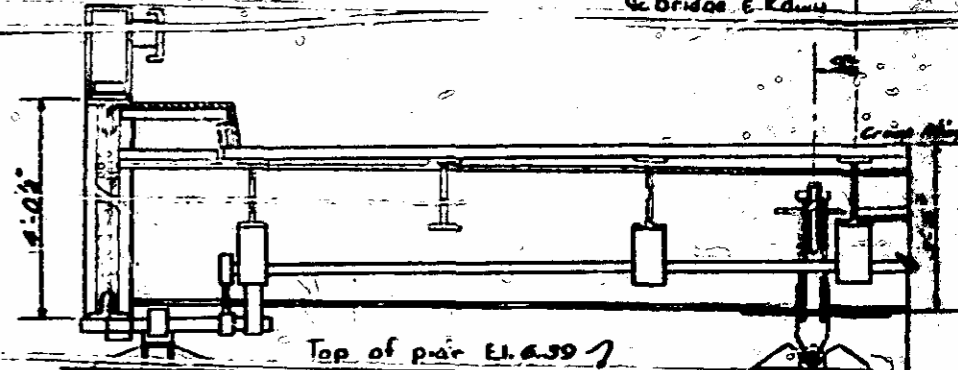
DECEMBER, 1938

DESIGNED BY *A. Z. Hayward*  
 DRAWN BY *J. H. ...*  
 CHECKED BY *...*  
 DATE *12-1-38*

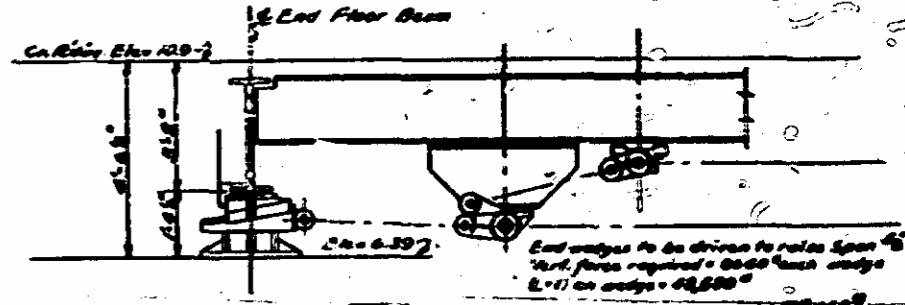


PART PLAN MACHINERY

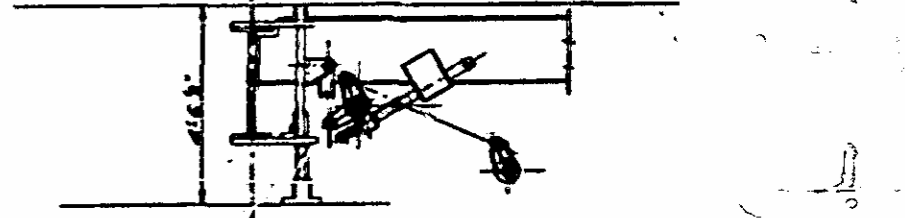
**Note:** Wedge and latch machinery to be designed so that in event of failure of limit switches, the machinery will not be damaged by over-driving.



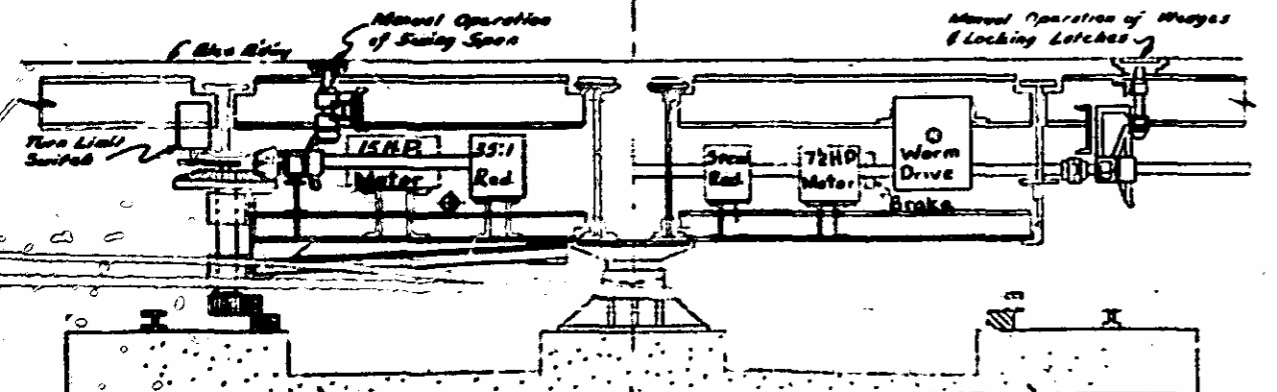
SECTION C-C



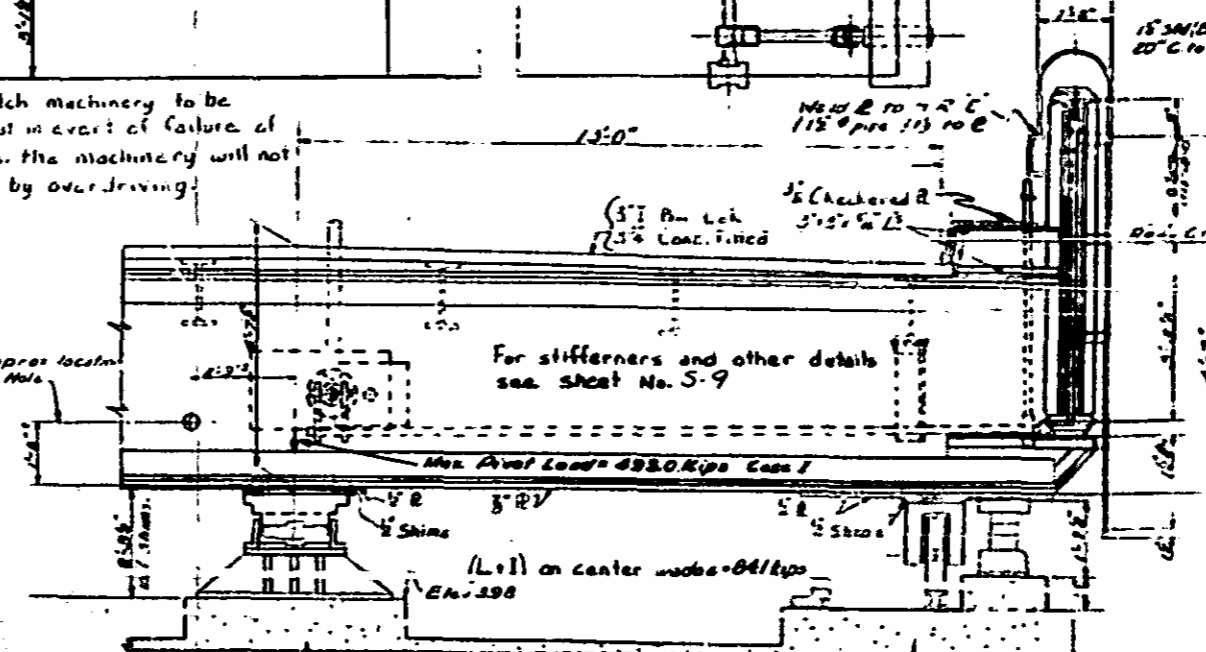
ELEVATION END OF SWING SPAN



SECTION D-D



SECTION A-A



SECTION B-B

Revision #1 to change size of floor beam number 6 westside only to 50 in 172.4.2

PROJECT NO. B.11197

DARE COUNTY

STATION 107+40

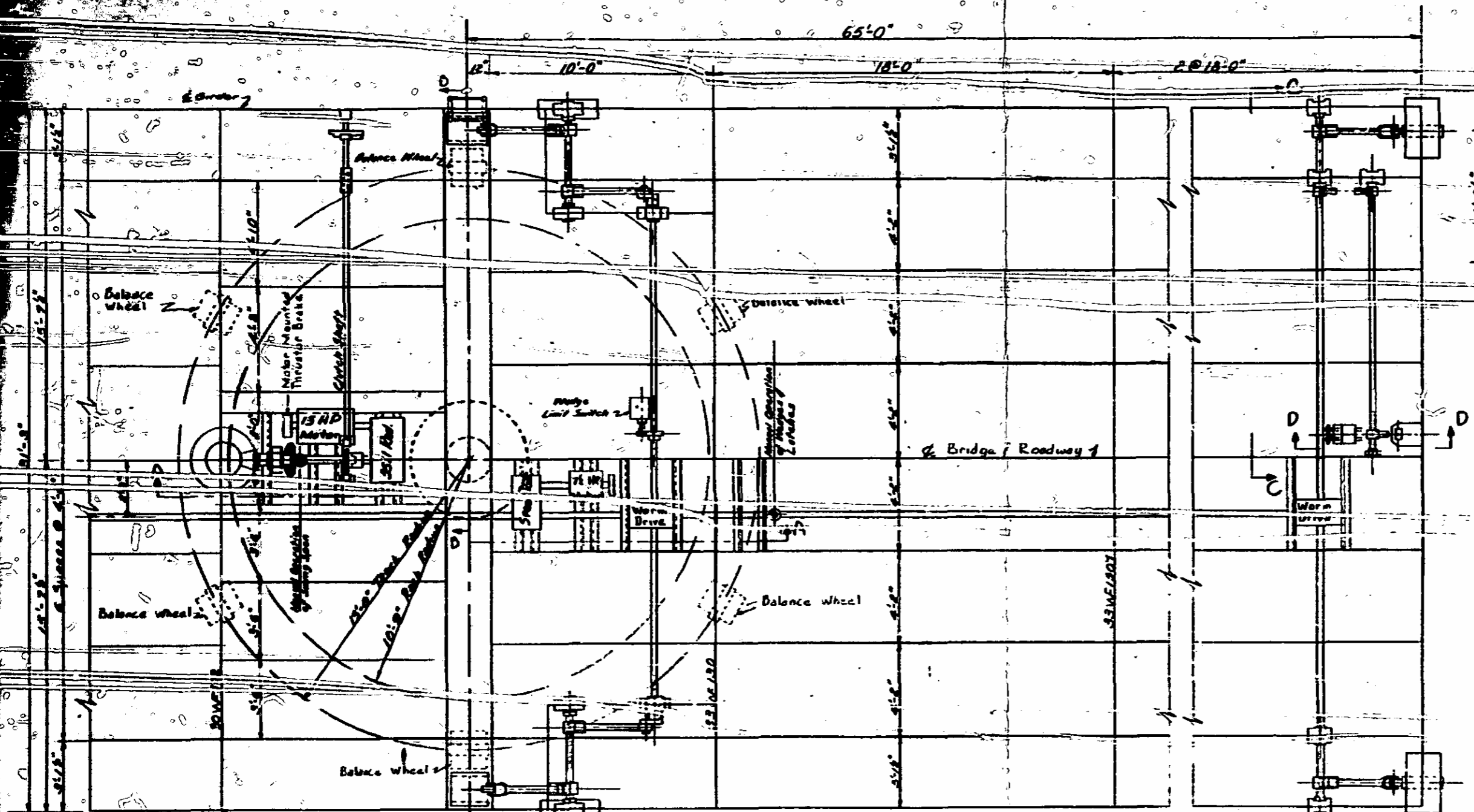
WRIGHT MEMORIAL BRIDGE

STATE OF NORTH CAROLINA STATE HIGHWAY COMMISSION

MACHINERY LAYOUT FOR SWING SPAN

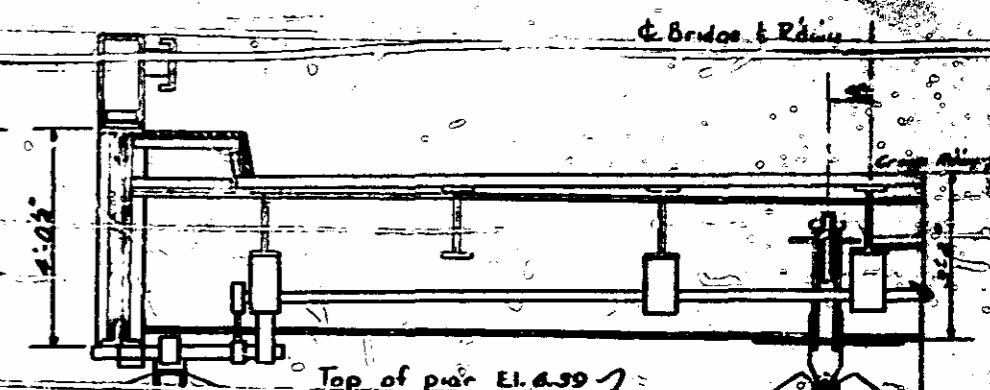
DECEMBER, 1938

DESIGNED BY *A. Z. Hayward*  
 DRAWN BY *[Signature]*  
 CHECKED BY *[Signature]*  
 DATE *12-1-38*

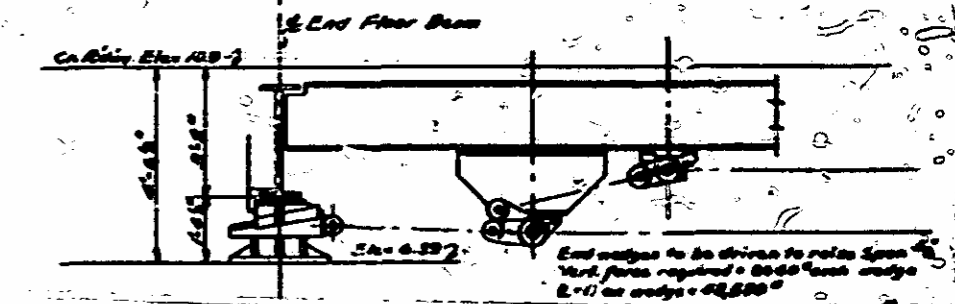


**PART PLAN MACHINERY**

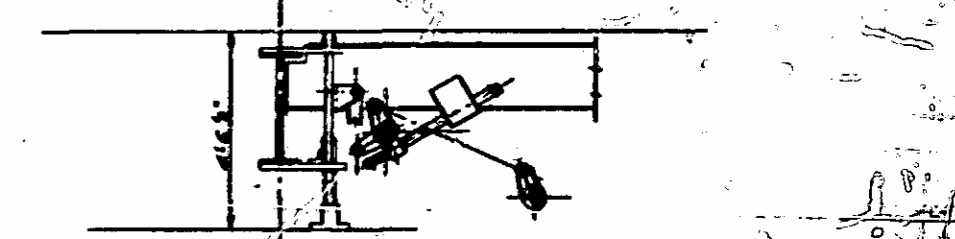
*Note:* Wedge and latch machinery to be designed so that in event of failure of limit switches, the machinery will not be damaged by overloading.



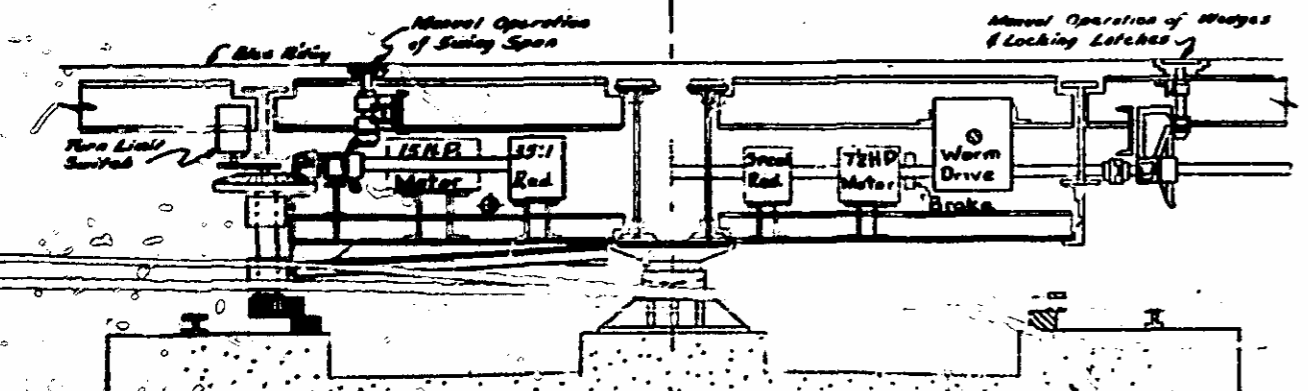
**SECTION C-C**



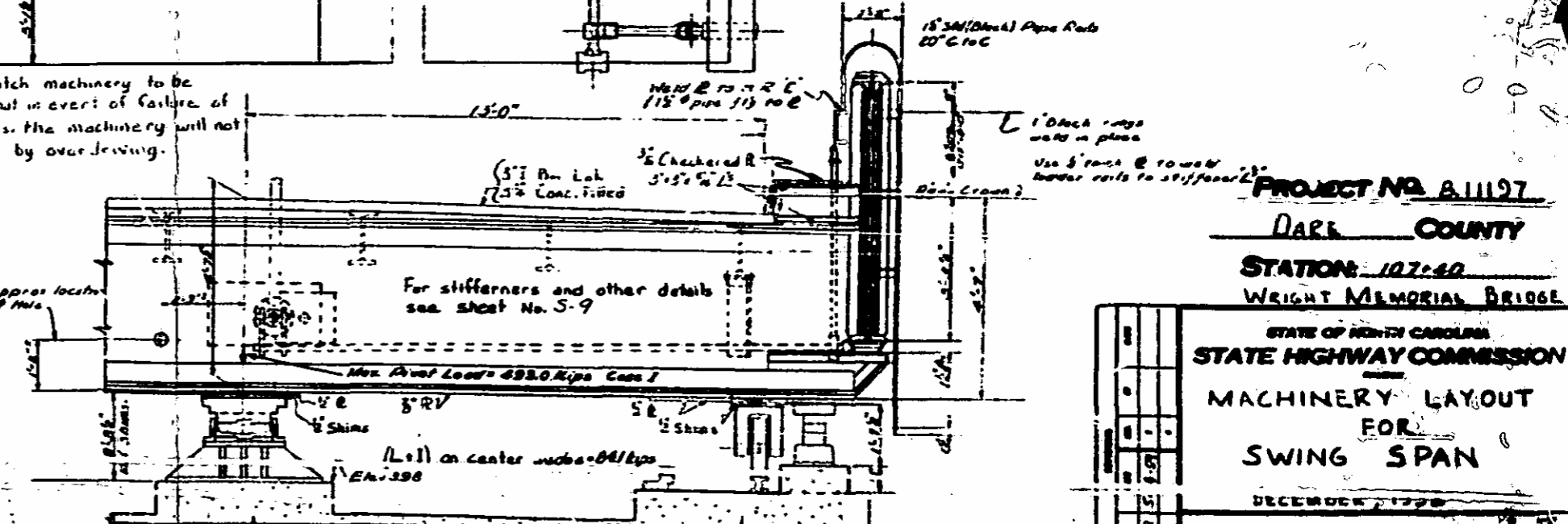
**ELEVATION END OF SWING SPAN**



**SECTION D-D**



**SECTION A-A**



**SECTION B-B**

Revision 1 To change size of floor beam number 6 outside only to 50 W 172-A-B

**PROJECT NO. A11127**

**DARE COUNTY**

**STATION 107+40**

**WRIGHT MEMORIAL BRIDGE**

STATE OF NORTH CAROLINA  
**STATE HIGHWAY COMMISSION**

**MACHINERY LAYOUT FOR SWING SPAN**

DECEMBER, 1928

NO.	DATE	BY	CHKD.
1	12-1-28	J. B. S.	
2	12-1-28	J. B. S.	
3	12-1-28	J. B. S.	
4	12-1-28	J. B. S.	
5	12-1-28	J. B. S.	
6	12-1-28	J. B. S.	
7	12-1-28	J. B. S.	
8	12-1-28	J. B. S.	
9	12-1-28	J. B. S.	
10	12-1-28	J. B. S.	