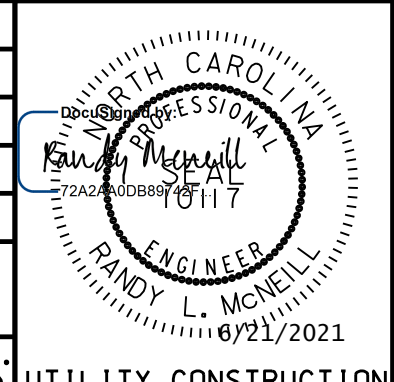


NOTE: RELOCATED PW700 BELONGS TO HRW.
NOTE: RELOCATED PW700 BELONGS TO HRW.

PROJECT REFERENCE NO.	1-5878
SHEET NO.	UC-14
DESIGNED BY:	DMP
DRAWN BY:	DMP
CHECKED BY:	DMP
APPROVED BY:	
REVISED:	
NORTH CAROLINA DEPARTMENT OF TRANSPORTATION	
UTILITIES ENGINEERING SEC. PHONE: (919) 707-6690 FAX: (919) 250-4151	UTILITY CONSTRUCTION PLANS ONLY

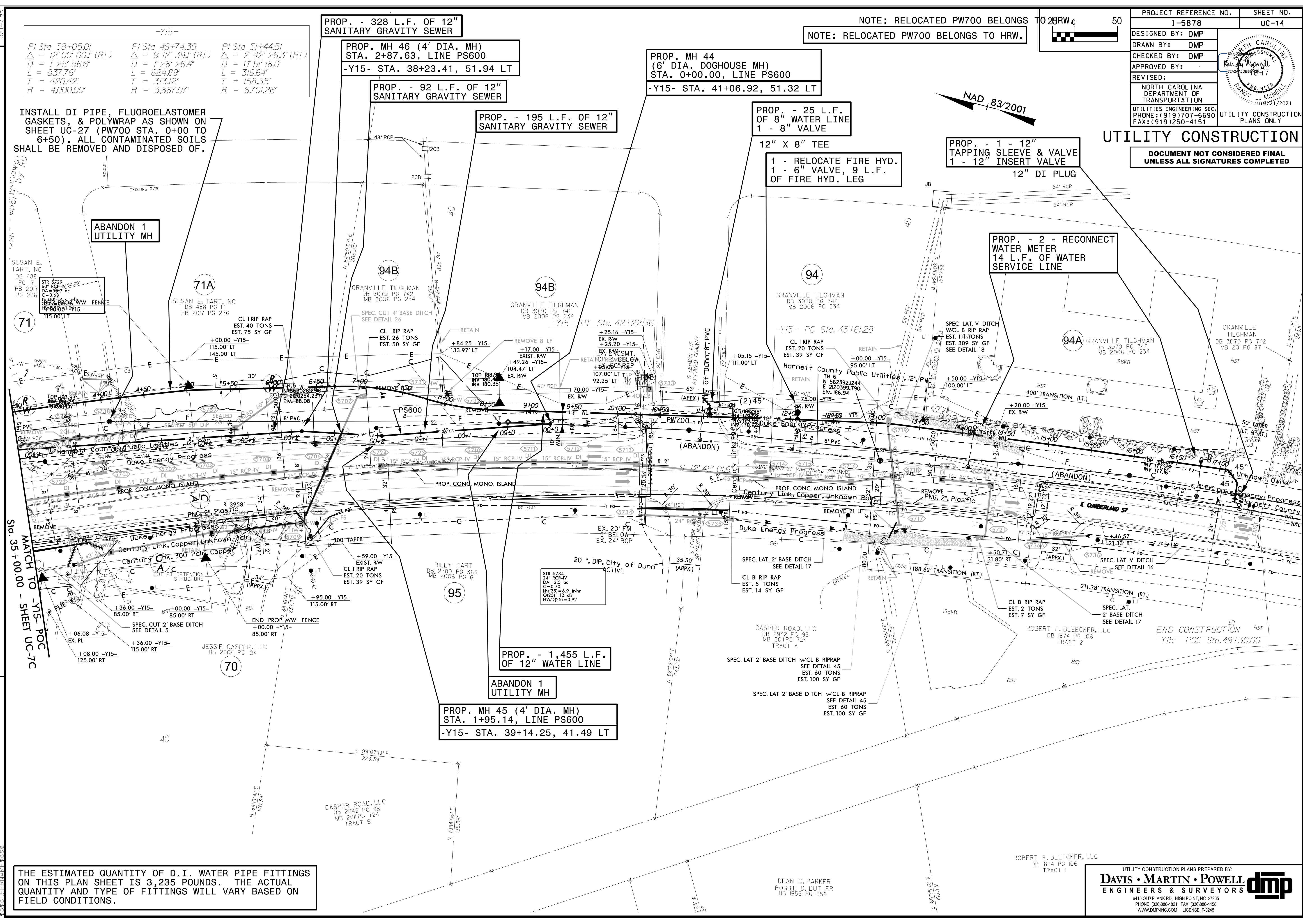


UTILITY CONSTRUCTION
DOCUMENT NOT CONSIDERED FINAL UNLESS ALL SIGNATURES COMPLETED

-Y15-		
PI Sta 38+05.01	PI Sta 46+74.39	PI Sta 51+44.51
$\Delta = 12'00''00.0''$ (RT)	$\Delta = 9'12''39.1''$ (RT)	$\Delta = 2'42''26.3''$ (RT)
$D = 1'25''56.6''$	$D = 1'28''26.4''$	$D = 0'51''18.0''$
$L = 837.76'$	$L = 624.89'$	$L = 316.64'$
$T = 420.42'$	$T = 313.12'$	$T = 158.35'$
$R = 4,000.00'$	$R = 3,887.07'$	$R = 6,701.26'$

INSTALL DI PIPE, FLUOROELASTOMER GASKETS, & POLYWRAP AS SHOWN ON SHEET UC-27 (PW700 STA. 0+00 TO 6+50). ALL CONTAMINATED SOILS SHALL BE REMOVED AND DISPOSED OF.

REVISIONS
1. 06/21/2021 - ADDED FLUOROELASTOMER GASKETS TO PW700 FROM STA. 0+00 TO 6+50.



THE ESTIMATED QUANTITY OF D.I. WATER PIPE FITTINGS ON THIS PLAN SHEET IS 3,235 POUNDS. THE ACTUAL QUANTITY AND TYPE OF FITTINGS WILL VARY BASED ON FIELD CONDITIONS.

UTILITY CONSTRUCTION PLANS PREPARED BY:
DAVIS • MARTIN • POWELL
ENGINEERS & SURVEYORS
6415 OLD PLANK RD., HIGH POINT, NC 27265
PHONE: (336) 886-4821 FAX: (336) 886-4458
WWW.DMP-INC.COM LICENSE: F-0245