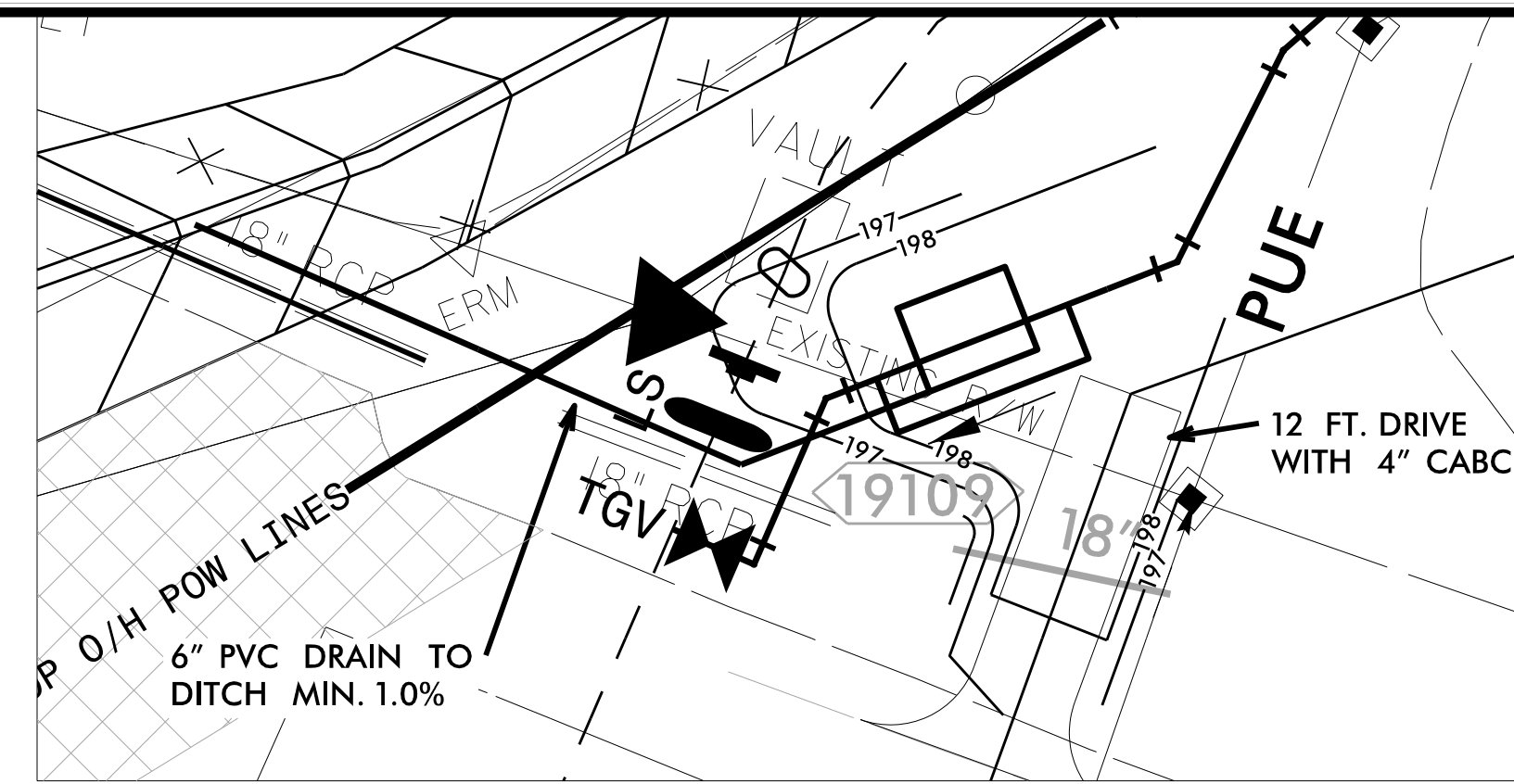


PROJECT REFERENCE NO.	SHEET NO.
I-5878	UC-7C
DESIGNED BY: DMP	
DRAWN BY: DMP	
CHECKED BY: DMP	
APPROVED BY:	
REVISED:	
NORTH CAROLINA DEPARTMENT OF TRANSPORTATION	
UTILITIES ENGINEERING SEC. PHONE: (919) 707-6690 FAX: (919) 250-4151	
UTILITY CONSTRUCTION PLANS ONLY	

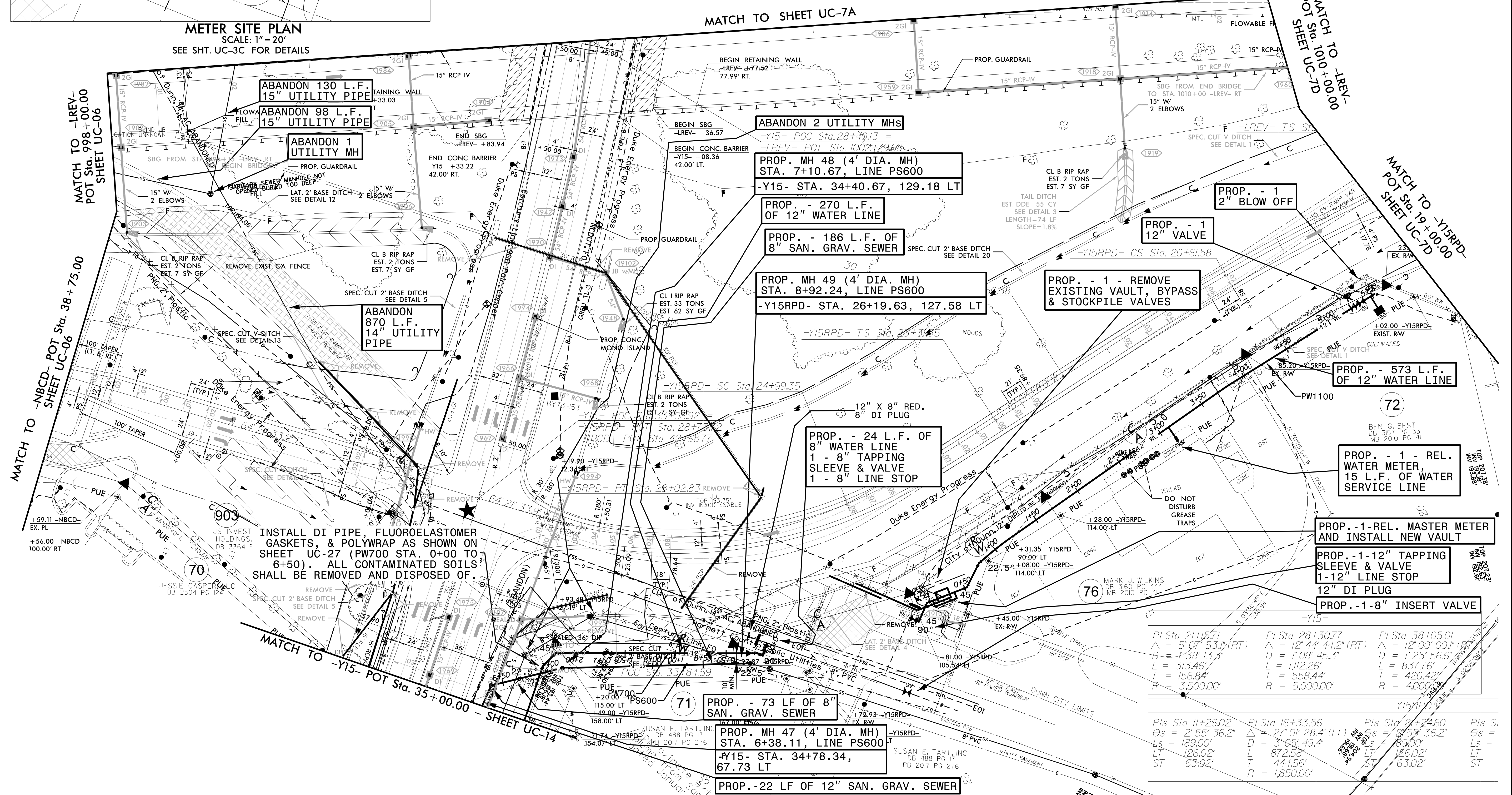
### UTILITY CONSTRUCTION

DOCUMENT NOT CONSIDERED FINAL UNLESS ALL SIGNATURES COMPLETED

NOTE: RELOCATED PW700 BELONGS TO HRW, RELOCATED PW1100 BELONGS TO THE CITY OF DUNN. RELOCATED MASTER METER AND VAULT IS OWNED BY THE CITY OF DUNN. HRW OWNS THE EXISTING 12" WATER LINE SOUTHEAST OF RELOCATED MASTER METER.



**METER SITE PLAN**  
SCALE: 1" = 20'  
SEE SHT. UC-3C FOR DETAILS



MATCH TO -LREV- POT Sta. 998+00.00 SHEET UC-06

MATCH TO -NBCD- POT Sta. 38+75.00 SHEET UC-06

MATCH TO -Y15- POT Sta. 35+00.00 - SHEET UC-14

MATCH TO SHEET UC-7A

MATCH TO -LREV- POT Sta. 100+00.00 SHEET UC-7D

MATCH TO -Y15RPD- POT Sta. 19+00.00 SHEET UC-7D

REVISIONS  
1. 06/21/2021 - ADDED FLUOROELASTOMER GASKETS TO PW700 FROM STA. 0+00 TO 6+50.

INSTALL DI PIPE, FLUROELASTOMER GASKETS, & POLYWRAP AS SHOWN ON SHEET UC-27 (PW700 STA. 0+00 TO 6+50). ALL CONTAMINATED SOILS SHALL BE REMOVED AND DISPOSED OF.

PI Sta 21+57.1	PI Sta 28+30.77	PI Sta 38+05.01
$\Delta = 5^{\circ}07'53.1"$ (RT)	$\Delta = 12^{\circ}44'44.2"$ (RT)	$\Delta = 12^{\circ}00'00.0"$ (RT)
$D = 1^{\circ}38'13.3"$	$D = 1^{\circ}08'45.3"$	$D = 1^{\circ}25'56.6"$
$L = 313.46'$	$L = 1112.26'$	$L = 837.76'$
$T = 156.84'$	$T = 558.44'$	$T = 420.42'$
$R = 3,500.00'$	$R = 5,000.00'$	$R = 4,000.00'$

PIs Sta 11+26.02	PI Sta 16+33.56	PIs Sta 21+24.60	PIs Sta 26+32.00
$\Delta_s = 2^{\circ}55'36.2"$	$\Delta = 27^{\circ}01'28.4"$ (LT)	$\Delta_s = 2^{\circ}58'36.2"$	$\Delta_s = 2^{\circ}58'36.2"$
$L_s = 189.00'$	$D = 3^{\circ}05'49.4"$	$L_s = 89.00'$	$L_s = 89.00'$
$LT = 126.02'$	$L = 872.58'$	$LT = 126.02'$	$LT = 126.02'$
$ST = 63.92'$	$T = 444.56'$	$ST = 63.02'$	$ST = 63.02'$
	$R = 1,850.00'$		

THE ESTIMATED QUANTITY OF D.I. WATER PIPE FITTINGS ON THIS PLAN SHEET IS 2,015 POUNDS. THE ACTUAL QUANTITY AND TYPE OF FITTINGS WILL VARY BASED ON FIELD CONDITIONS.