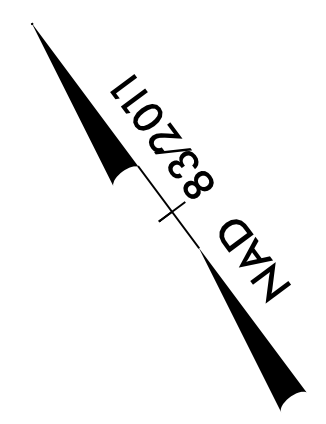


5/14/99

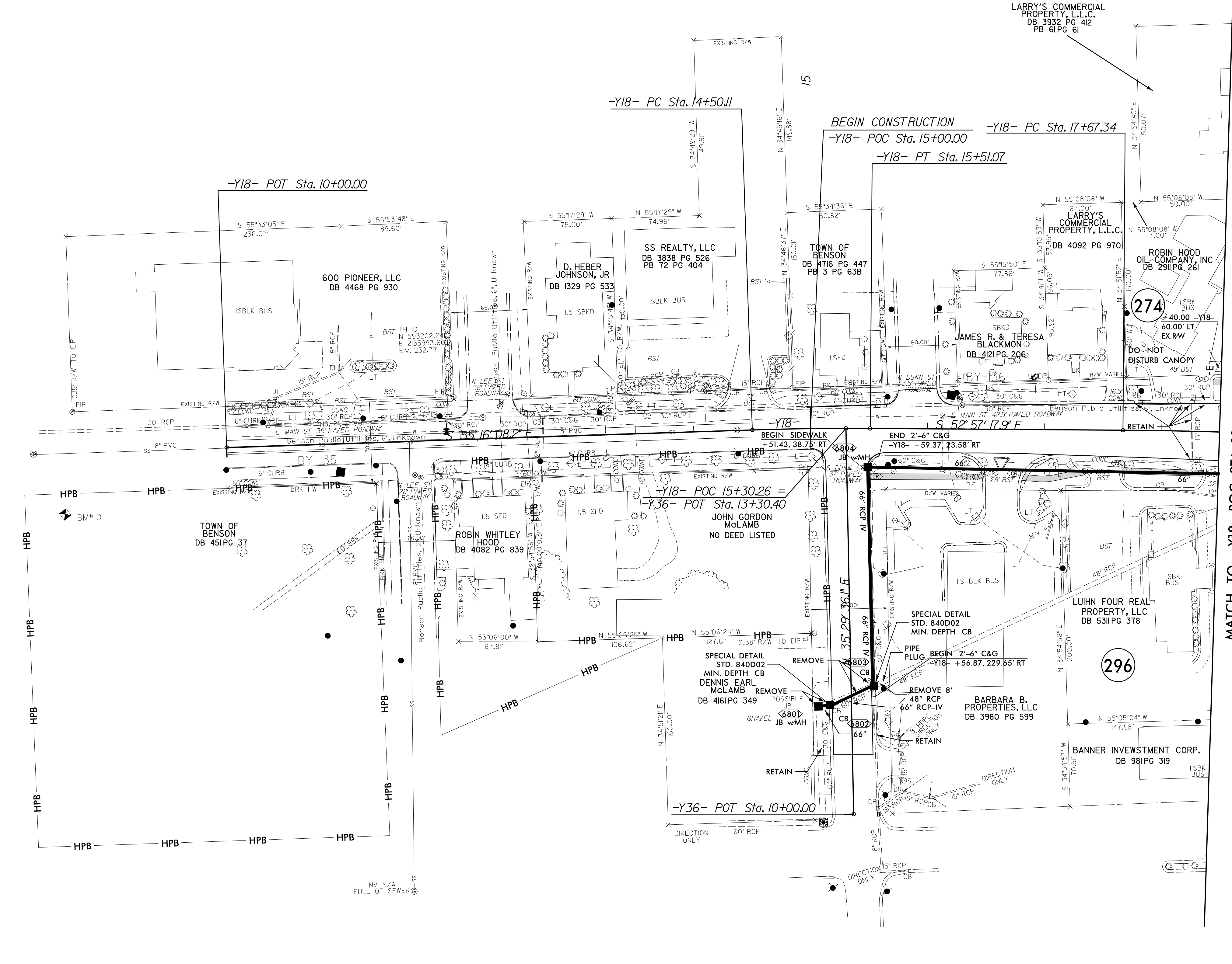
REVISIONS

15-JUN-2021 17:50 -5986B_Rdy_psh_68.dgn

-Y18-	
PI Sta 15+00.59	PI Sta 18+37.03
$\Delta = 2' 18' 50.3" (RT)$	$\Delta = 2' 16' 52.5" (RT)$
$D = 2' 17' 30.6"$	$D = 1' 38' 13.3"$
$L = 100.97'$	$L = 139.35'$
$T = 50.49'$	$T = 69.69'$
$R = 2,500.00'$	$R = 3,500.00'$
SE = EXIST.	SE = EXIST.



PROJECT REFERENCE NO. <i>1-5986B</i>	SHEET NO. <i>68</i>
RW SHEET NO.	
ROADWAY DESIGN ENGINEER <i>SWAN C LANCASTER</i> SEAL 027373 SUNSHINE ENGINEERS 6/28/2021	HYDRAULICS ENGINEER <i>JOSHUA G. DARTON</i> SEAL 26971 SUNSHINE ENGINEERS 6/28/2021
DOCUMENT NOT CONSIDERED FINAL UNLESS ALL SIGNATURES COMPLETED	
Michael Baker Engineering, Inc. 1000 Piedmont Drive Suite 800 Cary, NC 27518 NC License: F-1094	SUNGATE DESIGN GROUP, P.A. 1000 Piedmont Drive Suite 800 Cary, NC 27518 NC License: F-1094



MATCH TO -Y18- POC STA. 18+50.00 - SEE SHEET 42