

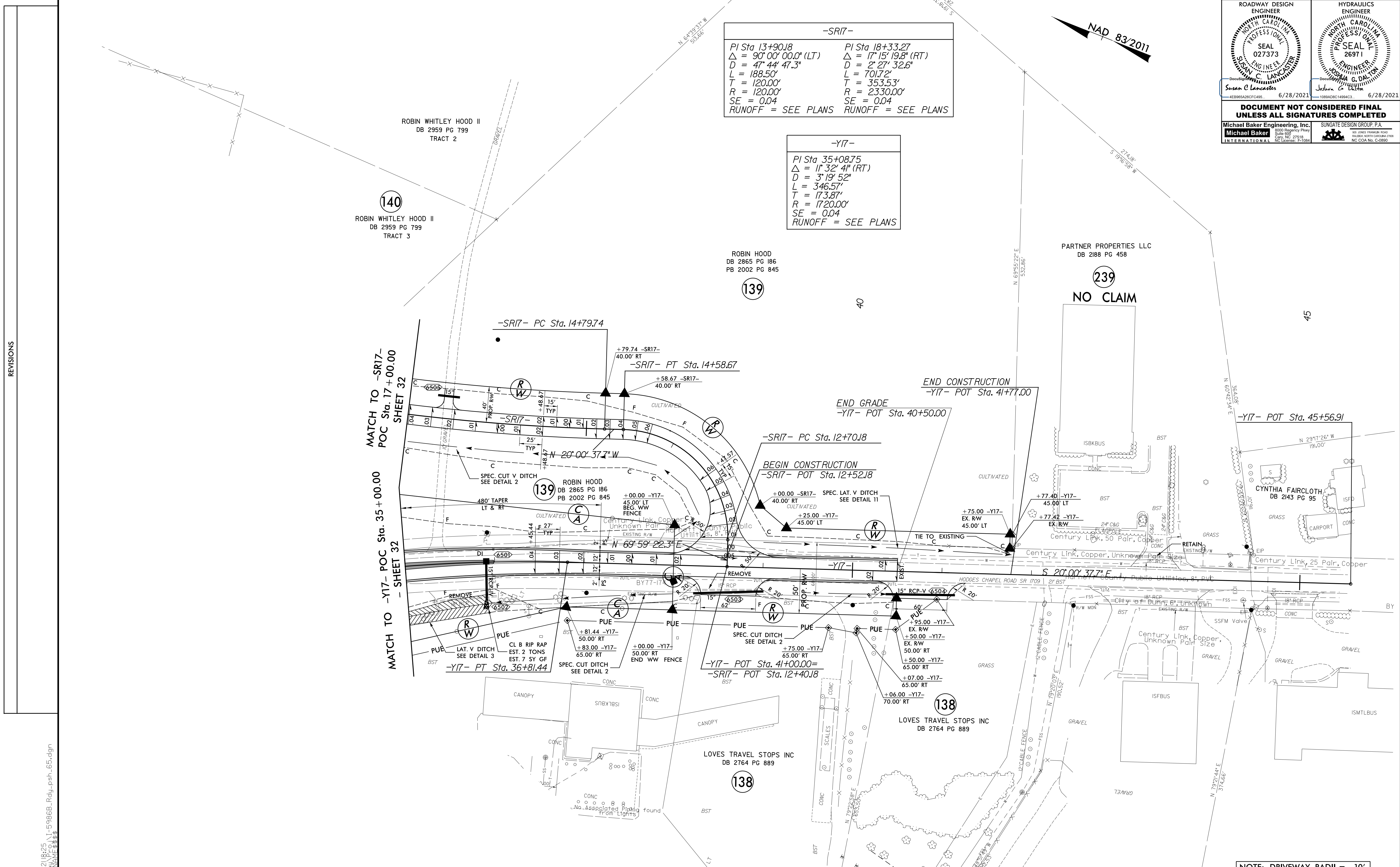
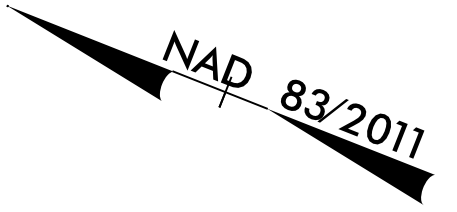
PROJECT REFERENCE NO. 1-5883		SHEET NO. 65	
RW SHEET NO.			
ROADWAY DESIGN ENGINEER SUSAN C. LANCASTER SEAL 027373 6/28/2021		HYDRAULICS ENGINEER JOSHUA G. DALTON SEAL 26971 6/28/2021	
DOCUMENT NOT CONSIDERED FINAL UNLESS ALL SIGNATURES COMPLETED			
Michael Baker Engineering, Inc. 4280662ACFCF485		SUNGATE DESIGN GROUP, P.A. 108RADNC14094C3	

-SR17-

PI Sta 13+90.18 Δ = 90° 00' 00.0" (LT) D = 47° 44' 47.3" L = 188.50' T = 120.00' R = 120.00' SE = 0.04 RUNOFF = SEE PLANS	PI Sta 18+33.27 Δ = 17° 15' 19.8" (RT) D = 2° 27' 32.6" L = 701.72' T = 353.53' R = 2330.00' SE = 0.04 RUNOFF = SEE PLANS
--	--

-Y17-

PI Sta 35+08.75 Δ = 11° 32' 4" (RT) D = 3° 19' 52" L = 346.57' T = 173.87' R = 1720.00' SE = 0.04 RUNOFF = SEE PLANS



REVISIONS

65 JUN 2021 10:25 AM N:\1-58868_Rdy_psh_65.dgn
 65 JUN 2021 10:25 AM N:\1-58868_Rdy_psh_65.dgn
 65 JUN 2021 10:25 AM N:\1-58868_Rdy_psh_65.dgn

FOR -Y17- PROFILE SEE SHEET 112 & 113
FOR -SR17- PROFILE SEE SHEET 126

NOTE: DRIVEWAY RADII = 10'
UNLESS SHOWN OTHERWISE