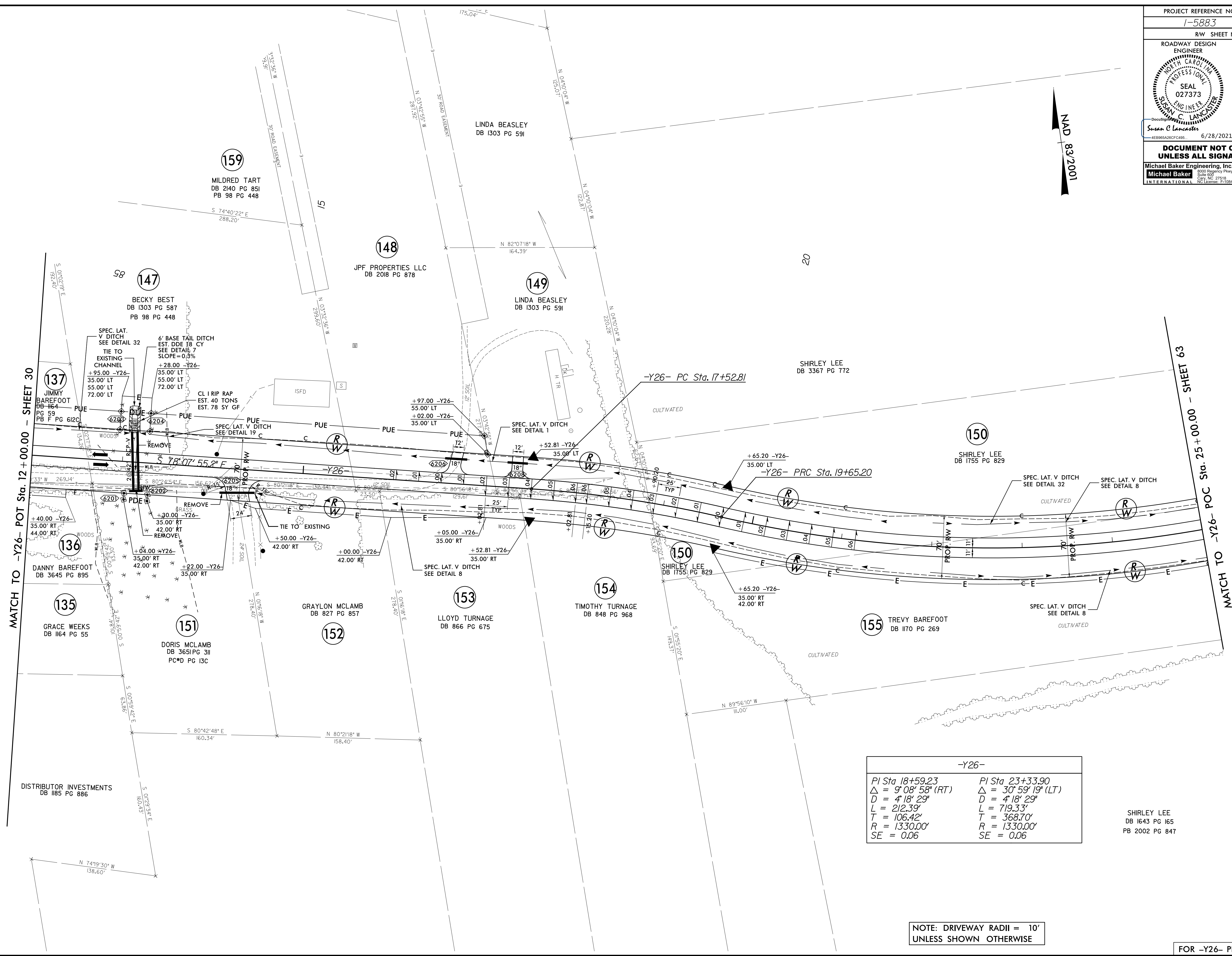
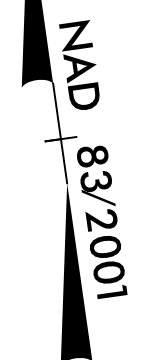


PROJECT REFERENCE NO. 1-5883		SHEET NO. 62	
RW SHEET NO.			
ROADWAY DESIGN ENGINEER SUSAN C. LANCASTER SEAL 027373 6/28/2021		HYDRAULICS ENGINEER JOSHUA G. DALTON SEAL 26971 6/28/2021	
<p align="center">DOCUMENT NOT CONSIDERED FINAL UNLESS ALL SIGNATURES COMPLETED</p>			
<p>Michael Baker Engineering, Inc. INTERNATIONAL</p>		<p>SUNGATE DESIGN GROUP, P.A.</p>	



REVISIONS

-Y26-	
PI Sta 18+59.23	PI Sta 23+33.90
$\Delta = 9^{\circ} 08' 58''$ (RT)	$\Delta = 30^{\circ} 59' 19''$ (LT)
D = 4' 18' 29"	D = 4' 18' 29"
L = 212.39'	L = 719.33'
T = 106.42'	T = 368.70'
R = 1330.00'	R = 1330.00'
SE = 0.06	SE = 0.06

SHIRLEY LEE
DB 1643 PG 165
PB 2002 PG 847

NOTE: DRIVEWAY RADII = 10'
UNLESS SHOWN OTHERWISE

FOR -Y26- PROFILE SEE SHEET 117