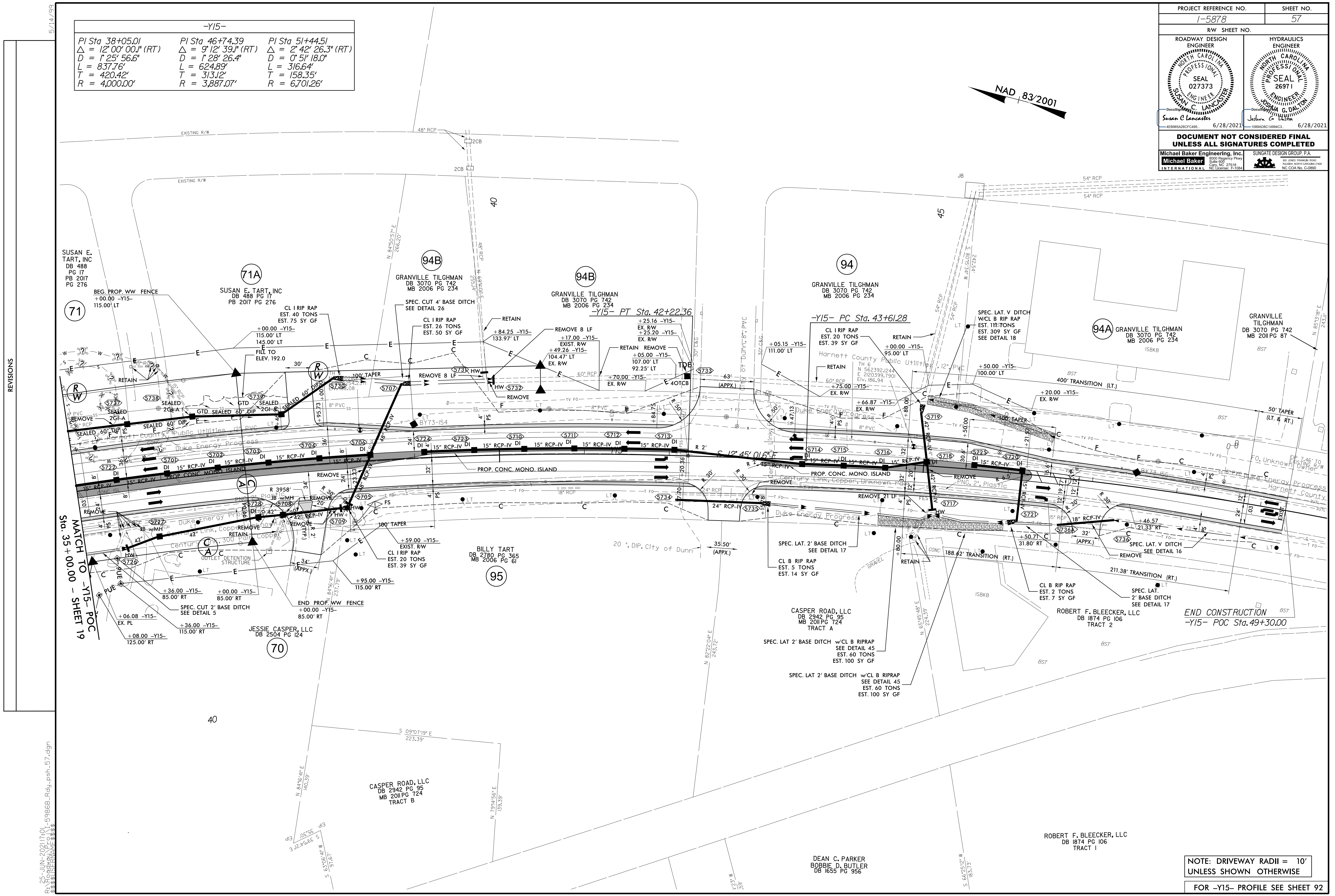
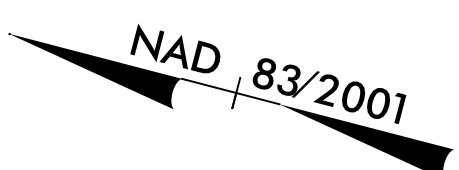


PROJECT REFERENCE NO. 1-5878	SHEET NO. 57
RW SHEET NO.	
ROADWAY DESIGN ENGINEER SUSAN C. LANCASTER Professional Seal 027373 6/28/2021	HYDRAULICS ENGINEER JOSHUA G. DARTON Professional Seal 26971 6/28/2021
DOCUMENT NOT CONSIDERED FINAL UNLESS ALL SIGNATURES COMPLETED	
Michael Baker Engineering, Inc. Professional Seal 6/28/2021	SUNGATE DESIGN GROUP, P.A. Professional Seal 6/28/2021

-Y15-		
PI Sta 38+05.01 Δ = 12°00'00.1" (RT) D = 1'25'56.6" L = 837.76' T = 420.42' R = 4,000.00'	PI Sta 46+74.39 Δ = 9°12'39.1" (RT) D = 1'28'26.4" L = 624.89' T = 313.12' R = 3,887.07'	PI Sta 51+44.51 Δ = 2°42'26.3" (RT) D = 0°51'18.0" L = 316.64' T = 158.35' R = 6,701.26'



REVISIONS

5/14/99

R:\25-JUN-2021\1701-59868.Rdy.psh-57.dgn
3:33:50 PM 6/28/2021

END CONSTRUCTION
-Y15- POC Sta.49+30.00

NOTE: DRIVEWAY RADII = 10'
UNLESS SHOWN OTHERWISE

FOR -Y15- PROFILE SEE SHEET 92