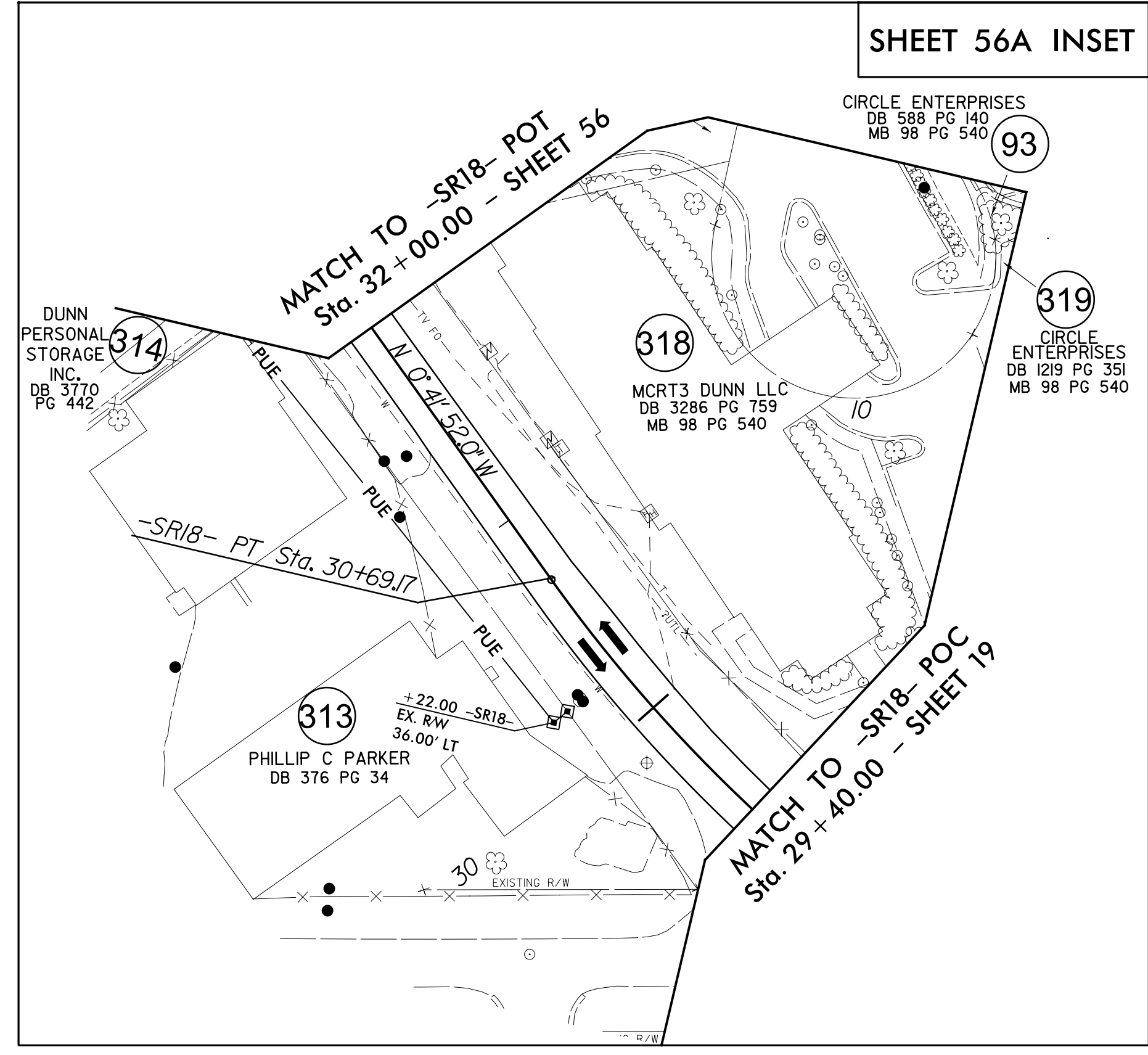
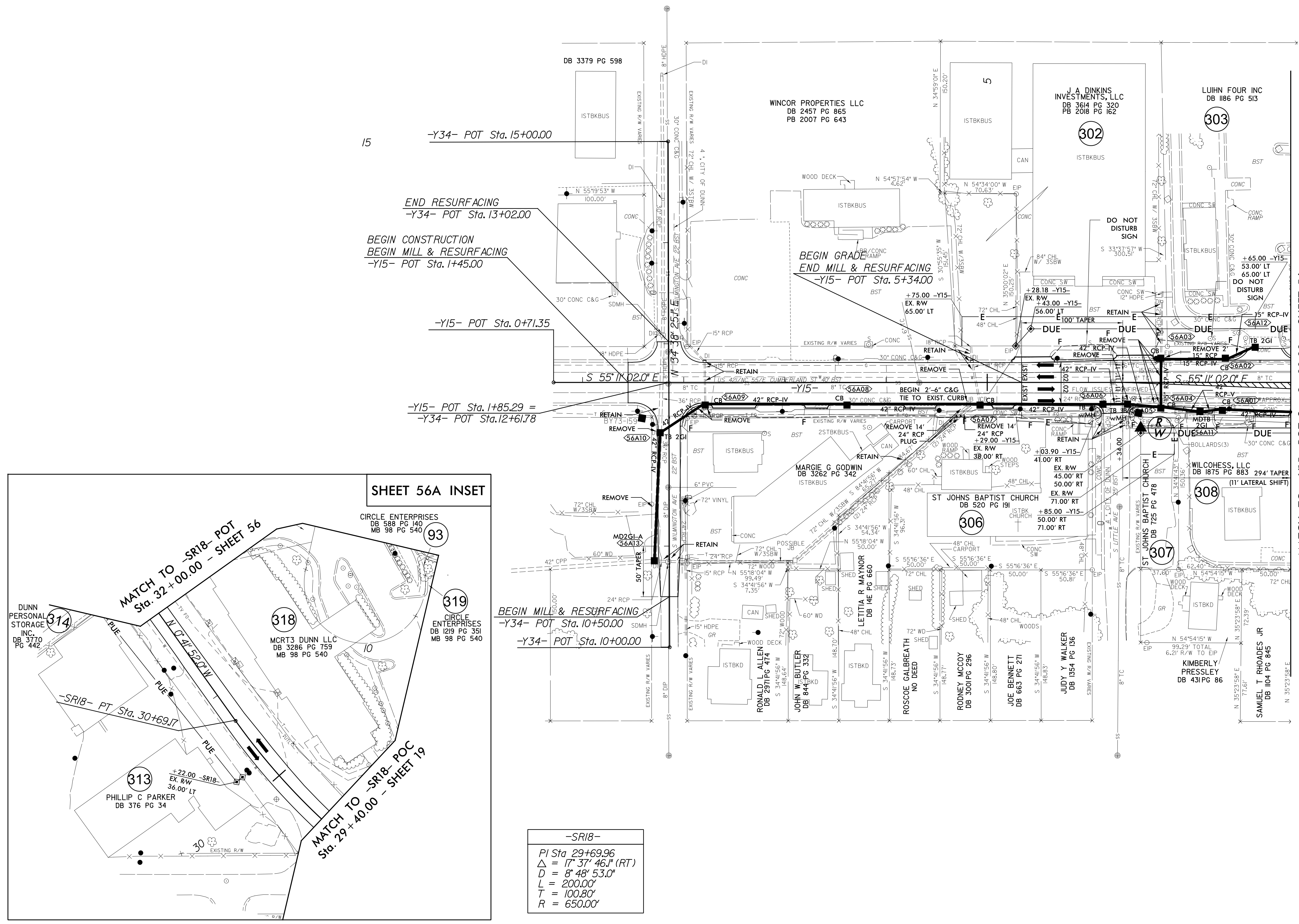


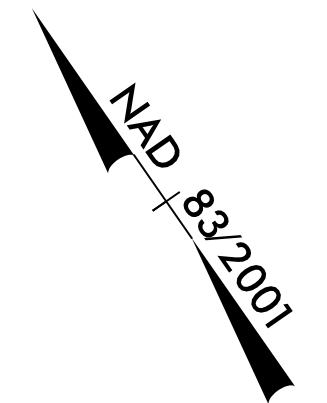
REVISIONS

PROJECT REFERENCE NO. 1-5878	SHEET NO. 56A
RW SHEET NO.	
ROADWAY DESIGN ENGINEER SUSAN C. LANCASTER SEAL 027373	HYDRAULICS ENGINEER JOSHUA G. DALTON SEAL 26971
DocuSign Susan C Lancaster 4E99A90138B742D8AC43ABAD51AEC744 6/28/2021	DocuSign Joshua G Dalton 108BADC14904C3 6/28/2021
<b>DOCUMENT NOT CONSIDERED FINAL UNLESS ALL SIGNATURES COMPLETED</b>	
Michael Baker Engineering, Inc. 1000 Ragingony Place Suite 600 Raleigh, NC 27618 Tel: 919.876.1000 Fax: 919.876.1001 www.mbakeng.com	SUNGATE DESIGN GROUP, P.A. 62 JONES FRANKER ROAD RALEIGH, NORTH CAROLINA 27618 NC CCA No. C-48890



<b>-SR18-</b>
PI Sta 29+69.96
Δ = 17' 37" 46.1" (RT)
D = 8' 48" 53.0"
L = 200.00'
T = 100.80'
R = 650.00'

MATCH TO -Y15- POT Sta. 8+00.00 - SHEET 56



NOTE: DRIVEWAY RADII = 10' UNLESS SHOWN OTHERWISE

FOR -Y15- PROFILE SEE SHEET 91  
FOR -SR18- PROFILE SEE SHEET 106