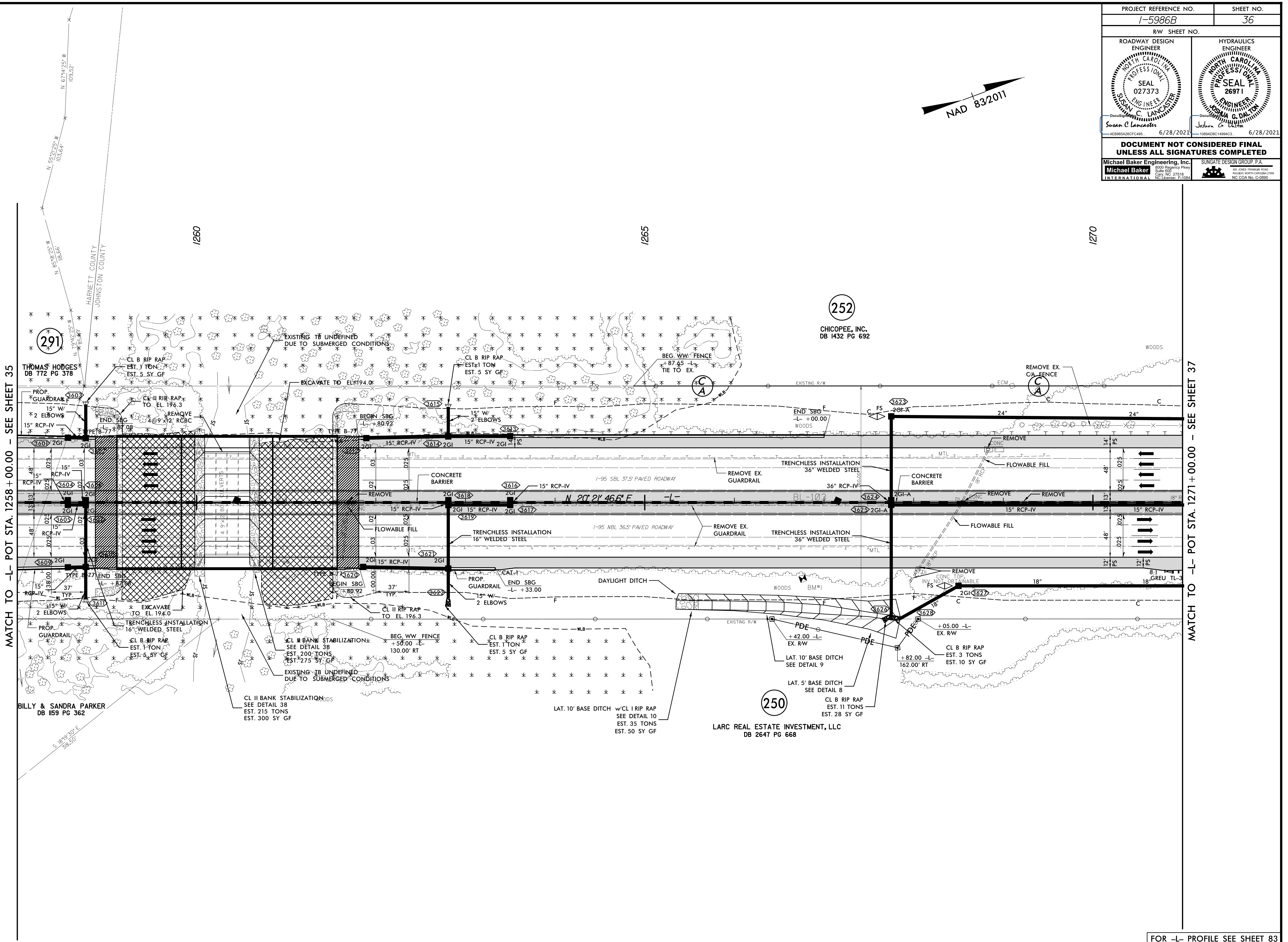
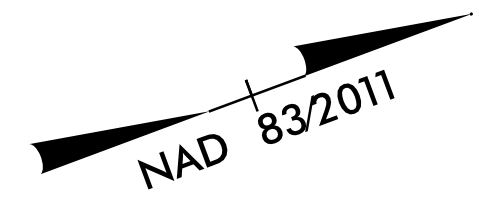


PROJECT REFERENCE NO. 1-5986B	SHEET NO. 36
RW SHEET NO.	
ROADWAY DESIGN ENGINEER SUSAN C LANCASTER SEAL 027373 NORTH CAROLINA PROFESSIONAL ENGINEER	HYDRAULICS ENGINEER JOSHUA G DARTON SEAL 26971 NORTH CAROLINA PROFESSIONAL ENGINEER
6/28/2021	6/28/2021
DOCUMENT NOT CONSIDERED FINAL UNLESS ALL SIGNATURES COMPLETED	
Michael Baker Engineering, Inc. 1000 Progress Park Suite 800 Cary, NC 27518 Tel: 919.241.4666 Fax: 919.241.4667 www.michaelbaker.com	SUNGATE DESIGN GROUP, P.A. 1000 Progress Park Suite 800 Cary, NC 27518 Tel: 919.241.4666 Fax: 919.241.4667 www.sungatedesign.com



MATCH TO -L- POT STA. 1258 + 00.00 - SEE SHEET 35

MATCH TO -L- POT STA. 1271 + 00.00 - SEE SHEET 37

1260
1265
1270

291
THOMAS HODGES
DB 772 PG 378

252
CHICOPEE, INC.
DB 1432 PG 692

BILLY & SANDRA PARKER
DB 1159 PG 362

250
LARC REAL ESTATE INVESTMENT, LLC
DB 2647 PG 668

5/14/2021 17:49:36 R:\05-JUN-2021\17-49-36\5986B_Rdwy_psh_36.dgn