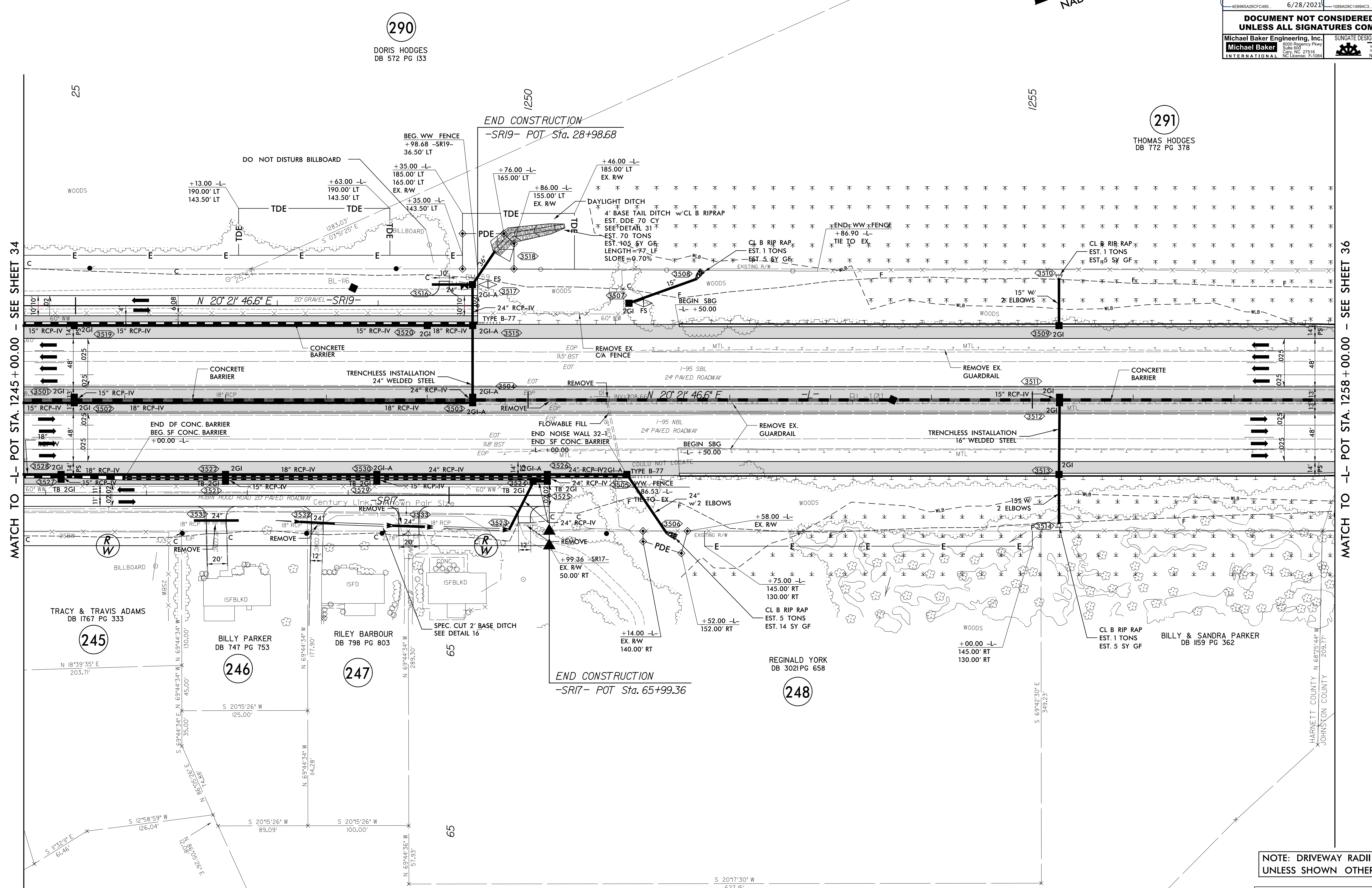


PROJECT REFERENCE NO. <b>1-5986B</b>	SHEET NO. <b>35</b>
RW SHEET NO.	
ROADWAY DESIGN ENGINEER <b>Susan C. Lancaster</b> Professional Seal: SEAL 027373 6/28/2021	HYDRAULICS ENGINEER <b>Joshua G. Dalton</b> Professional Seal: SEAL 26971 6/28/2021
<p><b>DOCUMENT NOT CONSIDERED FINAL UNLESS ALL SIGNATURES COMPLETED</b></p> <p>Michael Baker Engineering, Inc. 8000 Progress Park, Suite 800, Cary, NC 27518, NC License: P-1084</p> <p>SUNGATE DESIGN GROUP, P.A. 1088ADBC14904C3, 6/28/2021</p>	



MATCH TO -L- POT STA. 1245 + 00.00 - SEE SHEET 34

MATCH TO -L- POT STA. 1258 + 00.00 - SEE SHEET 36

NOTE: DRIVEWAY RADII = 10' UNLESS SHOWN OTHERWISE

FOR -L- PROFILE SEE SHEET 82  
FOR -SR17- PROFILE SEE SHEET 128  
FOR -SR19- PROFILE SEE SHEET 142

REVISIONS

R:\35-JUN-2021\17-49-5986B\_Rdly\_psh\_35.dgn

5/14/99