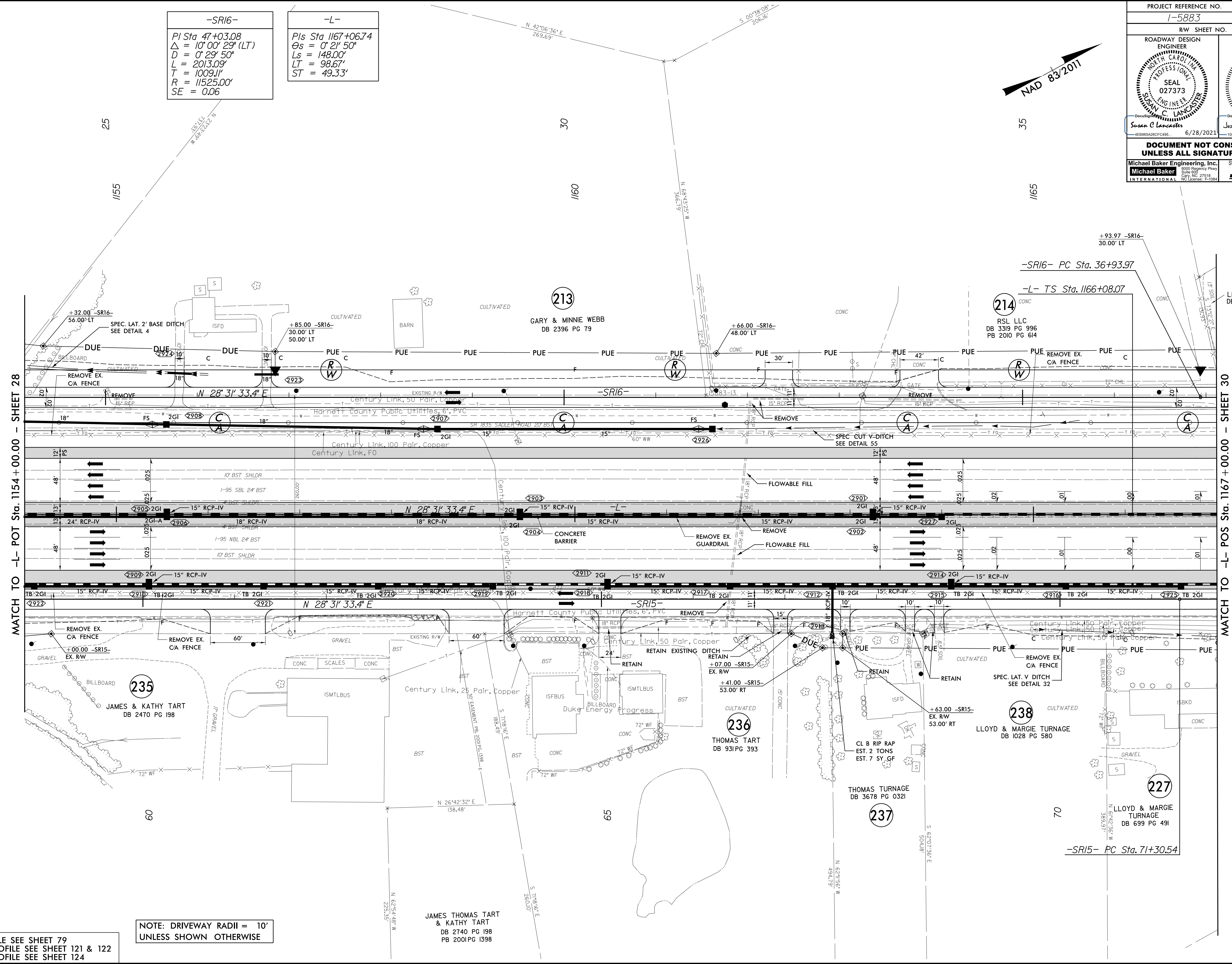


PROJECT REFERENCE NO. 1-5883		SHEET NO. 29	
RW SHEET NO.			
ROADWAY DESIGN ENGINEER SUSAN C. LANCASTER SEAL 027373 6/28/2021		HYDRAULICS ENGINEER JOSHUA G. DALTON SEAL 26971 6/28/2021	
DOCUMENT NOT CONSIDERED FINAL UNLESS ALL SIGNATURES COMPLETED			
Michael Baker Engineering, Inc. INTERNATIONAL		SUNGATE DESIGN GROUP, P.A.	



-SR16-
PI Sta 47+03.08
Δ = 10° 00' 29" (LT)
D = 0' 29' 50"
L = 2013.09'
T = 1009.11'
R = 11525.00'
SE = 0.06

-L-
PIs Sta 1167+06.74
Θs = 0' 21' 50"
Ls = 148.00'
LT = 98.67'
ST = 49.33'



MATCH TO -L- POT Sta. 1154+00.00 - SHEET 28

MATCH TO -L- POS Sta. 1167+00.00 - SHEET 30

NOTE: DRIVEWAY RADII = 10'
UNLESS SHOWN OTHERWISE

FOR -L- PROFILE SEE SHEET 79
FOR -SR15- PROFILE SEE SHEET 121 & 122
FOR -SR16- PROFILE SEE SHEET 124

JAMES THOMAS TART
& KATHY TART
DB 2740 PG 198
PB 2001 PG 1398

215
LISA FITCHETT
DB 3404 PG 138

214
RSL LLC
DB 3319 PG 996
PB 2010 PG 614

235
JAMES & KATHY TART
DB 2470 PG 198

236
THOMAS TART
DB 931 PG 393

238
LLOYD & MARGIE TURNAGE
DB 1028 PG 580

237
THOMAS TURNAGE
DB 3678 PG 0321

227
LLOYD & MARGIE TURNAGE
DB 699 PG 491

-SR15- PC Sta. 71+30.54

-SR16- PC Sta. 36+93.97

-L- TS Sta. 1166+08.07

N 28° 31' 33.4" E

N 28° 31' 33.4" E

N 28° 31' 33.4" E

N 26° 42' 32" E
138.48'

S 71° 06' 1" E
260.00'

S 55° 32' 2" N
A. 89° 15' 23" N

S 71° 06' 1" E
260.00'

N 62° 07' 38" E
504.48'

N 61° 42' 36" E
359.19'

N 42° 06' 36" E
269.69'

S 00° 18' 08" E
206.16'

S 61° 59' 6" E
A. 552.57 x 89 N

S 85° 16' 1" N
A. 89° 52' 52" N

S 35° 16' 1" N
A. 89° 52' 52" N

S 25° 16' 1" N
A. 89° 52' 52" N

213

214

235

236

238

237

227

215