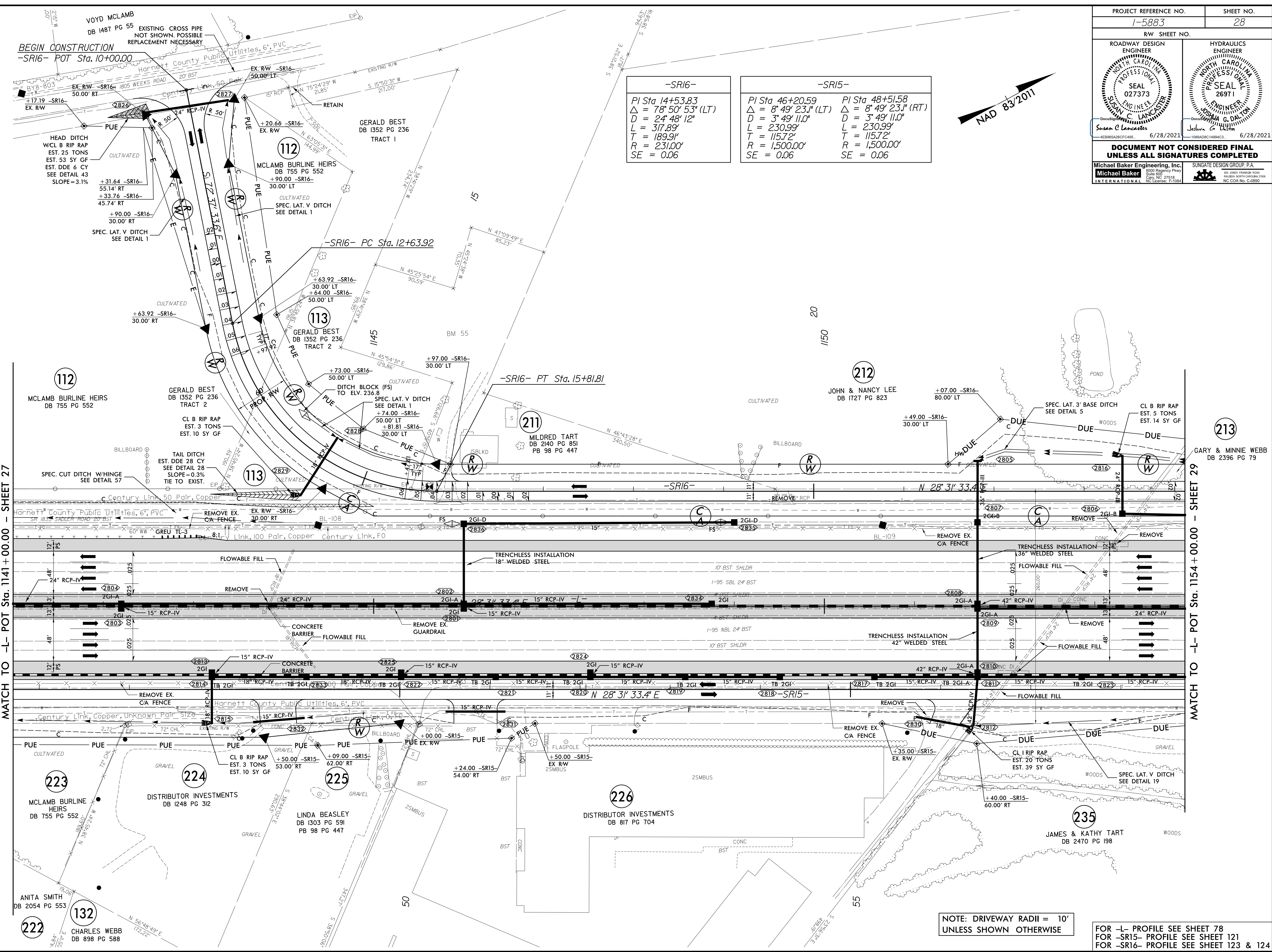


PROJECT REFERENCE NO. 1-5883		SHEET NO. 28	
RW SHEET NO.			
ROADWAY DESIGN ENGINEER SUNGATE DESIGN GROUP, P.A. SEAL 027373 Susan C Lancaster 6/28/2021		HYDRAULICS ENGINEER SUNGATE DESIGN GROUP, P.A. SEAL 26971 Joshua G Dalton 6/28/2021	
DOCUMENT NOT CONSIDERED FINAL UNLESS ALL SIGNATURES COMPLETED			
Michael Baker Engineering, Inc. 1000 Regency Pkwy Suite 600 Cary, NC 27518 Tel: 919.241.8600 Fax: 919.241.8601 www.mbakergroup.com		SUNGATE DESIGN GROUP, P.A. 602 Jones Frankel Road Raleigh, North Carolina 27617 Tel: 919.241.8600 Fax: 919.241.8601 www.sungatedesign.com	

-SR16-	-SR15-
PI Sta 14+53.83	PI Sta 46+20.59
$\Delta = 78' 50" 53" (LT)$	$\Delta = 8' 49' 23" (LT)$
$D = 24' 48" 12"$	$D = 3' 49' 11.0"$
$L = 317.89'$	$L = 230.99'$
$T = 189.9'$	$T = 115.72'$
$R = 231.00'$	$R = 1,500.00'$
$SE = 0.06$	$SE = 0.06$



MATCH TO -L- POT Sta. 1141+00.00 - SHEET 27

MATCH TO -L- POT Sta. 1154+00.00 - SHEET 29

NOTE: DRIVEWAY RADII = 10' UNLESS SHOWN OTHERWISE

FOR -L- PROFILE SEE SHEET 78
FOR -SR15- PROFILE SEE SHEET 121
FOR -SR16- PROFILE SEE SHEET 123 & 124

REVISIONS

8/17/19

24 JUN 2021 11:55 AM AT: 59866B_Rdy_psh_28.dgn