

RW SHEET NO.

ROADWAY DESIGN ENGINEER  
 NORTH CAROLINA PROFESSIONAL SEAL 027373  
 SUSAN C. LANCASTER  
 4289662PCF0485 6/28/2021

HYDRAULICS ENGINEER  
 NORTH CAROLINA PROFESSIONAL SEAL 26971  
 JOSHUA G. DALTON  
 108840NC140043 6/28/2021

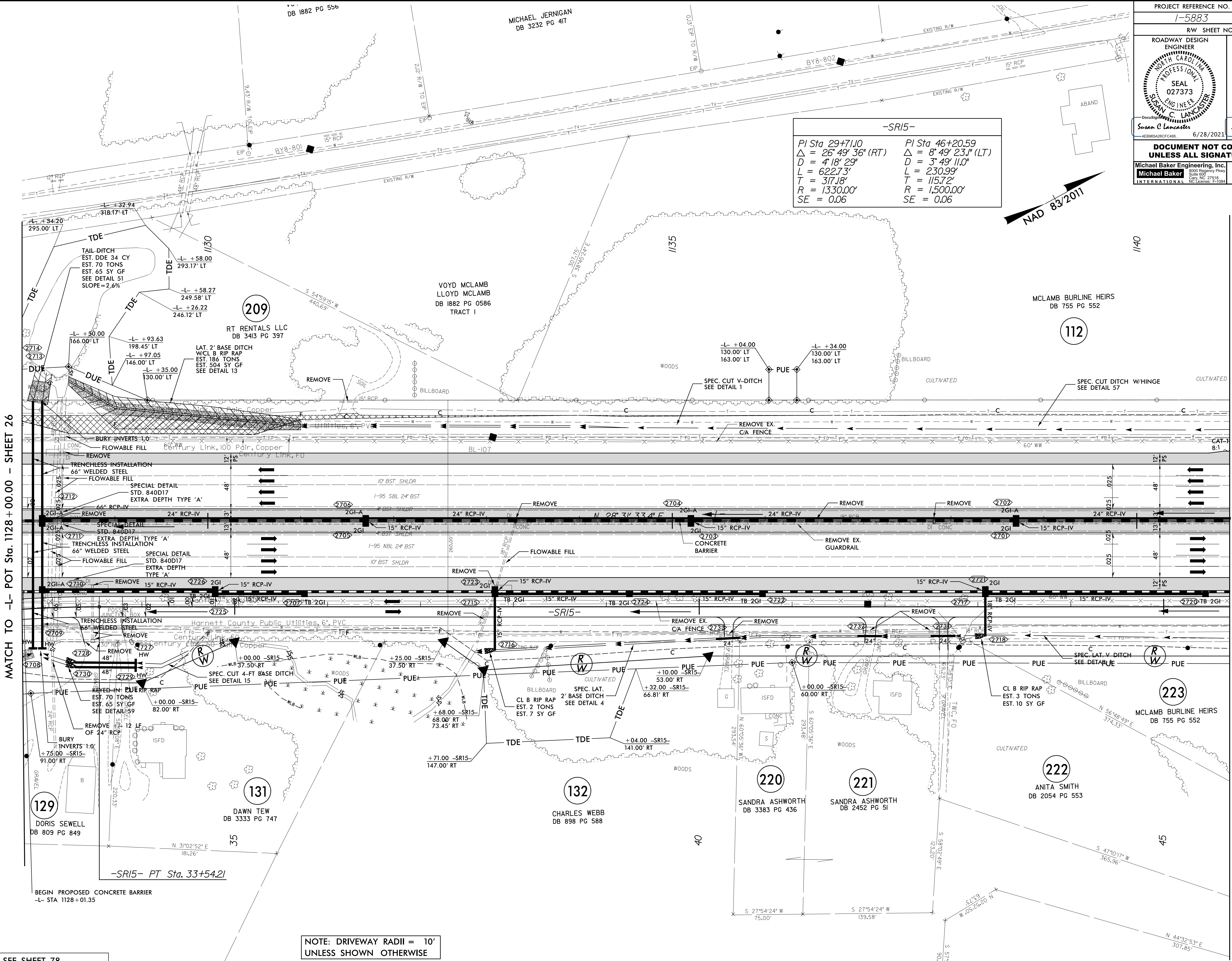
**DOCUMENT NOT CONSIDERED FINAL UNLESS ALL SIGNATURES COMPLETED**

Michael Baker Engineering, Inc.  
 1000 Regency Parkway  
 Suite 600  
 Raleigh, NC 27618  
 NC License: P-1084

SUNGATE DESIGN GROUP, P.A.  
 602 JONES FRANKER ROAD  
 HARRISBORO, NORTH CAROLINA 27541  
 NC COA No. C-4890

**-SRI5-**

PI Sta 29+71.0	PI Sta 46+20.59
$\Delta = 26^{\circ}49'36''$ (RT)	$\Delta = 8^{\circ}49'23.1''$ (LT)
$D = 4'18'29''$	$D = 3'49'11.0''$
$L = 622.73'$	$L = 230.99'$
$T = 317.18'$	$T = 115.72'$
$R = 1330.00'$	$R = 1500.00'$
$SE = 0.06$	$SE = 0.06$



MATCH TO -L- POT Sta. 1128 + 00.00 - SHEET 26

MATCH TO -L- POT Sta. 1141 + 00.00 - SHEET 28

129 DORIS SEWELL  
 DB 809 PG 849

131 DAWN TEW  
 DB 3333 PG 747

132 CHARLES WEBB  
 DB 898 PG 588

200 SANDRA ASHWORTH  
 DB 3383 PG 436

201 SANDRA ASHWORTH  
 DB 2452 PG 51

222 ANITA SMITH  
 DB 2054 PG 553

223 MCLAMB BURLINE HEIRS  
 DB 755 PG 552

NOTE: DRIVEWAY RADII = 10'  
 UNLESS SHOWN OTHERWISE

FOR -L- PROFILE SEE SHEET 78  
 FOR -SRI5- PROFILE SEE SHEET 120 & 121

25 JUN 2021 10:25 AM  
 8:48:30 AM  
 N1-598668\_Rdy\_psh\_27.dgn