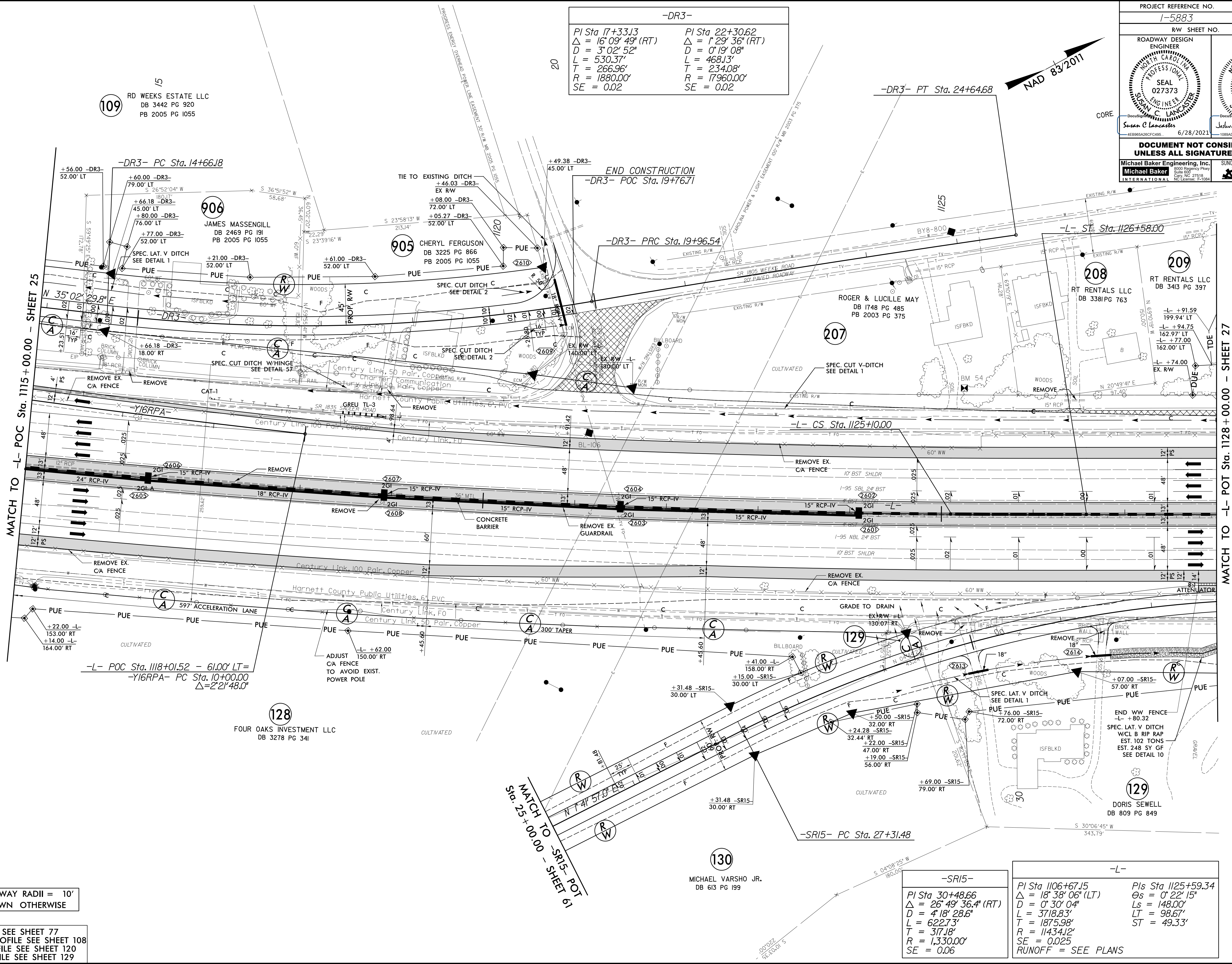


PROJECT REFERENCE NO. 1-5883		SHEET NO. 26	
RW SHEET NO.		HYDRAULICS ENGINEER	
ROADWAY DESIGN ENGINEER		SEAL 26971	
Susan C. Lancaster 6/28/2021		Joshua G. Dalton 6/28/2021	
DOCUMENT NOT CONSIDERED FINAL UNLESS ALL SIGNATURES COMPLETED			
Michael Baker Engineering, Inc. INTERNATIONAL		SUNGATE DESIGN GROUP, P.A.	

-DR3-

PI Sta 17+33.13 Δ = 16° 09' 49" (RT) D = 3° 02' 52" L = 530.37' T = 266.96' R = 1880.00' SE = 0.02	PI Sta 22+30.62 Δ = 1° 29' 36" (RT) D = 0° 19' 08" L = 468.13' T = 234.08' R = 17960.00' SE = 0.02
--	--



NOTE: DRIVEWAY RADII = 10'
UNLESS SHOWN OTHERWISE

FOR -L- PROFILE SEE SHEET 77
FOR -Y16RPA- PROFILE SEE SHEET 108
FOR -SR15- PROFILE SEE SHEET 120
FOR -DR3- PROFILE SEE SHEET 129

-SR15-

PI Sta 30+48.66 Δ = 26° 49' 36.4" (RT) D = 4° 18' 28.6" L = 622.73' T = 317.18' R = 1,330.00' SE = 0.06	PI Sta 1106+67.15 Δ = 18° 38' 06" (LT) D = 0° 30' 04" L = 3718.83' T = 1875.98' R = 11434.12' SE = 0.025 RUNOFF = SEE PLANS	PIs Sta 1125+59.34 Θs = 0° 22' 15" Ls = 148.00' LT = 98.67' ST = 49.33'
---	--	---

130
MICHAEL VARSHO JR.
DB 613 PG 199

REVISIONS

MATCH TO -L- POC Sta. 1115+00.00 - SHEET 25

MATCH TO -SR15- POT Sta. 25+00.00 - SHEET 61

MATCH TO -L- POT Sta. 1128+00.00 - SHEET 27