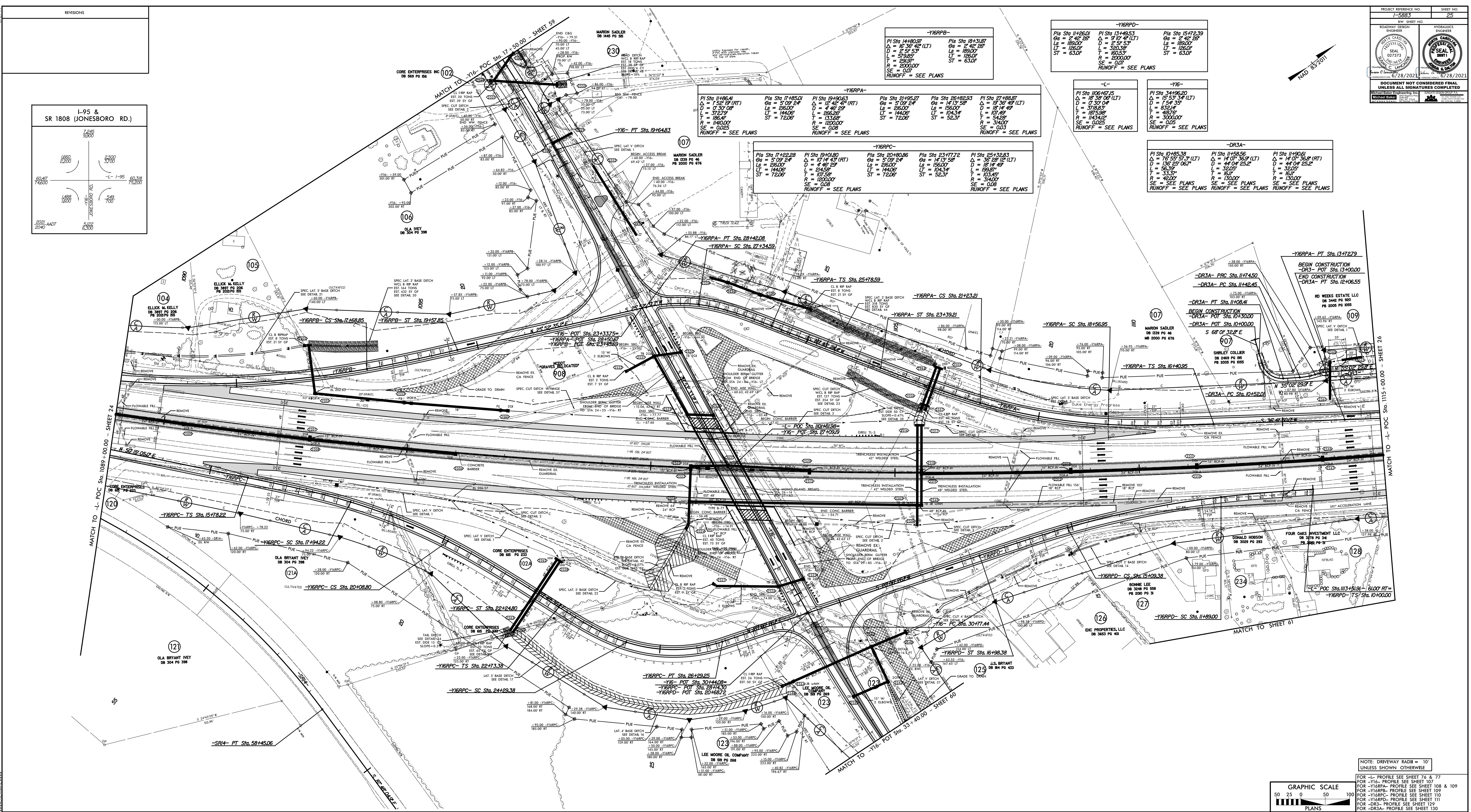
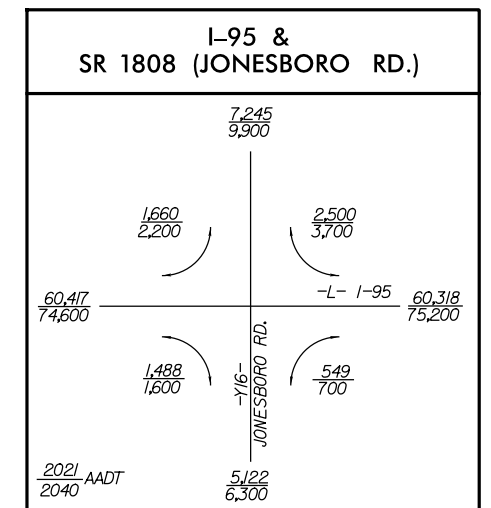


REVISIONS



-Y16RPPB-

PI Sta 14+80.97	PI Sta 19+31.87
Δ = 15° 36' 42" (LT)	Δ = 2° 42' 28"
D = 275.53'	D = 189.00'
L = 575.85'	L = 126.00'
T = 186.49'	T = 126.00'
R = 1140.00'	R = 1140.00'
SE = 0.025	SE = 0.025

-Y16RPPD-

PI Sta 14+26.01	PI Sta 13+42.53	PI Sta 15+72.39
Δ = 2° 42' 28"	Δ = 9° 17' 4" (LT)	Δ = 2° 42' 28"
D = 189.00'	D = 320.38'	D = 189.00'
L = 126.00'	L = 320.38'	L = 126.00'
T = 126.00'	T = 320.38'	T = 126.00'
R = 1140.00'	R = 1140.00'	R = 1140.00'
SE = 0.025	SE = 0.025	SE = 0.025

-Y16RPPA-

PI Sta 14+86.41	PI Sta 14+90.01	PI Sta 19+10.63	PI Sta 21+52.27	PI Sta 26+122.93	PI Sta 27+188.87
Δ = 1° 30' 00" (RT)	Δ = 5° 03' 24"	Δ = 12° 48' 4" (RT)	Δ = 5° 03' 24"	Δ = 12° 48' 4" (RT)	Δ = 12° 48' 4" (RT)
D = 730.00'	D = 260.00'	D = 260.00'	D = 260.00'	D = 260.00'	D = 260.00'
L = 372.79'	L = 260.00'	L = 260.00'	L = 260.00'	L = 260.00'	L = 260.00'
T = 186.49'	T = 144.00'	T = 144.00'	T = 144.00'	T = 144.00'	T = 144.00'
R = 1140.00'	R = 1140.00'	R = 1140.00'	R = 1140.00'	R = 1140.00'	R = 1140.00'
SE = 0.025	SE = 0.025	SE = 0.025	SE = 0.025	SE = 0.025	SE = 0.025

-L-

PI Sta 106+47.15	PI Sta 114+96.20
Δ = 15° 36' 42" (LT)	Δ = 15° 36' 42" (LT)
D = 275.53'	D = 275.53'
L = 575.85'	L = 575.85'
T = 186.49'	T = 186.49'
R = 1140.00'	R = 1140.00'
SE = 0.025	SE = 0.025

-Y16RPPC-

PI Sta 17+42.28	PI Sta 19+10.80	PI Sta 20+10.86	PI Sta 23+177.12	PI Sta 25+326.81
Δ = 1° 30' 00" (RT)	Δ = 12° 48' 4" (RT)	Δ = 5° 03' 24"	Δ = 12° 48' 4" (RT)	Δ = 12° 48' 4" (RT)
D = 260.00'	D = 260.00'	D = 260.00'	D = 260.00'	D = 260.00'
L = 260.00'	L = 260.00'	L = 260.00'	L = 260.00'	L = 260.00'
T = 144.00'	T = 144.00'	T = 144.00'	T = 144.00'	T = 144.00'
R = 1140.00'	R = 1140.00'	R = 1140.00'	R = 1140.00'	R = 1140.00'
SE = 0.025	SE = 0.025	SE = 0.025	SE = 0.025	SE = 0.025

-DR3A-

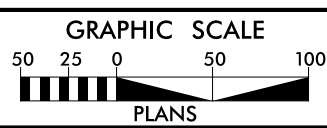
PI Sta 10+45.39	PI Sta 11+59.56	PI Sta 11+20.61
Δ = 15° 36' 42" (LT)	Δ = 14° 07' 36.8" (LT)	Δ = 14° 07' 36.8" (RT)
D = 136.25' 06.7"	D = 44' 04' 25.2"	D = 44' 04' 25.2"
L = 32.37'	L = 136.25'	L = 136.25'
T = 32.37'	T = 136.25'	T = 136.25'
R = 42.00'	R = 136.25'	R = 136.25'
SE = 0.025	SE = 0.025	SE = 0.025

PROJECT REFERENCE NO. 1-5893
SHEET NO. 25

ROADWAY DESIGN ENGINEER

DATE: 02/28/2021

UNLESS ALL SIGNATURES COMPLETED



NOTE: DRIVEWAY RADII = 10' UNLESS SHOWN OTHERWISE

FOR -L- PROFILE SEE SHEET 76 & 77
FOR -Y16- PROFILE SEE SHEET 07
FOR -Y16RPA- PROFILE SEE SHEET 108 & 109
FOR -Y16RPPB- PROFILE SEE SHEET 109
FOR -Y16RPPC- PROFILE SEE SHEET 110
FOR -Y16RPPD- PROFILE SEE SHEET 111
FOR -DR3A- PROFILE SEE SHEET 129