

8/17/2011

PROJECT REFERENCE NO. 1-5883	SHEET NO. 24
RW SHEET NO.	HYDRAULICS ENGINEER
ROADWAY DESIGN ENGINEER	SEAL 027373
Susan C. Lancaster 6/28/2021	Joshua G. Dalton 6/28/2021
DOCUMENT NOT CONSIDERED FINAL UNLESS ALL SIGNATURES COMPLETED	
Michael Baker Engineering, Inc. INTERNATIONAL	SUNGATE DESIGN GROUP, P.A.

-L-
 Pls Sta 1087+41.84
 $\Theta_s = 0^\circ 22' 15''$
 $L_s = 148.00'$
 $LT = 98.67'$
 $ST = 49.33'$

PI Sta 1106+67.15
 $\Delta = 18^\circ 38' 06'' (LT)$
 $D = 0^\circ 30' 04''$
 $L = 3718.83'$
 $T = 1875.98'$
 $R = 11434.12'$
 $SE = 0.025$
 RUNOFF = SEE PLANS

-Y16RPB-
 Pls Sta 11+26.01
 $\Theta_s = 2^\circ 42' 26''$
 $L_s = 189.00'$
 $LT = 126.01'$
 $ST = 63.01'$

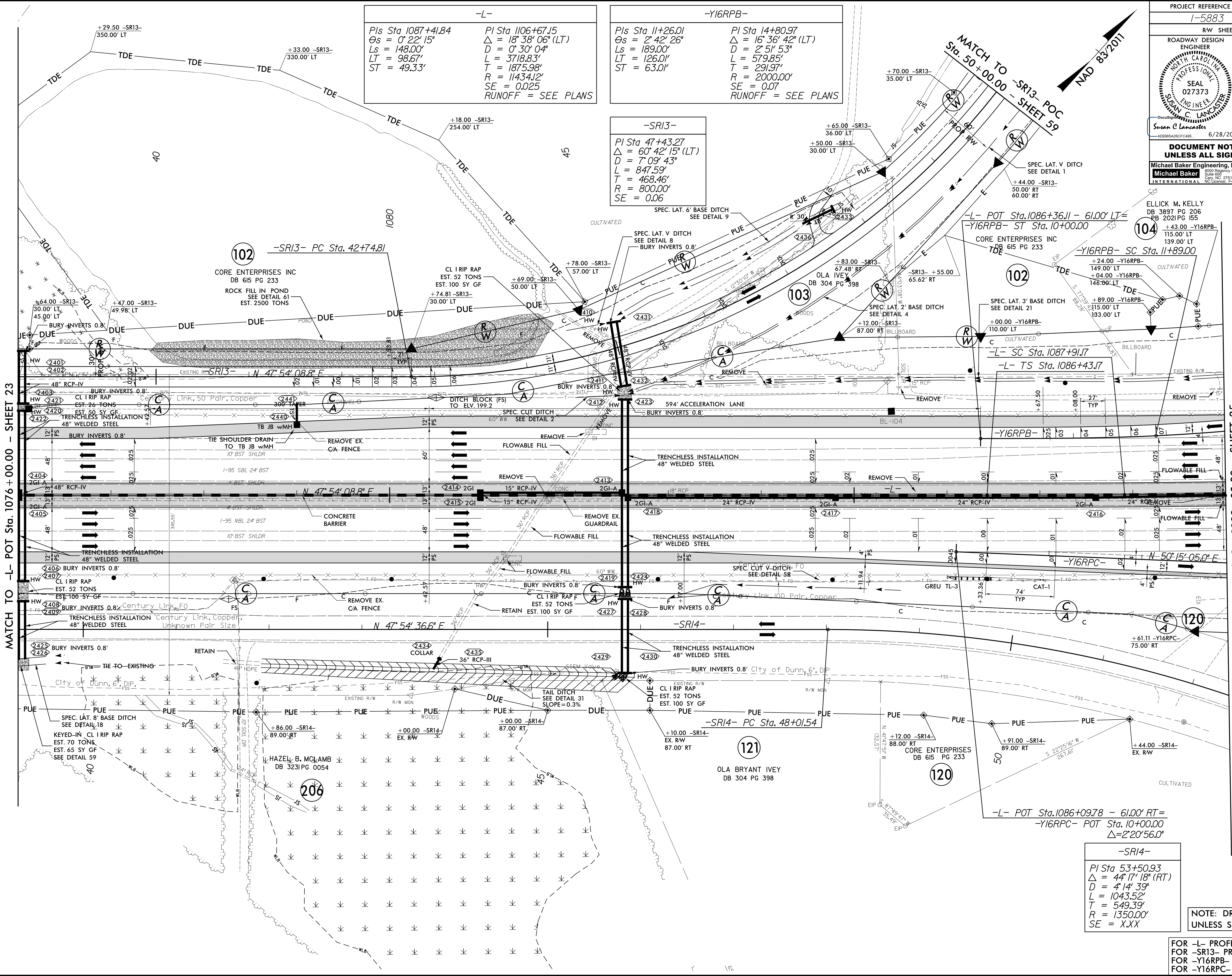
PI Sta 14+80.97
 $\Delta = 16^\circ 36' 42'' (LT)$
 $D = 2^\circ 51' 53''$
 $L = 579.85'$
 $T = 291.97'$
 $R = 2000.00'$
 $SE = 0.07$
 RUNOFF = SEE PLANS

-SR13-
 PI Sta 47+43.27
 $\Delta = 60^\circ 42' 15'' (LT)$
 $D = 7^\circ 09' 43''$
 $L = 847.59'$
 $T = 468.46'$
 $R = 800.00'$
 $SE = 0.06$

-SR14-
 PI Sta 53+50.93
 $\Delta = 44^\circ 17' 18'' (RT)$
 $D = 4^\circ 14' 39''$
 $L = 1043.52'$
 $T = 549.39'$
 $R = 1350.00'$
 $SE = XXX$

NOTE: DRIVEWAY RADII = 10'
UNLESS SHOWN OTHERWISE

FOR -L- PROFILE SEE SHEET 76
 FOR -SR13- PROFILE SEE SHEET 119
 FOR -Y16RPB- PROFILE SEE SHEET 109
 FOR -Y16RPC- PROFILE SEE SHEET 110



REVISIONS

MATCH TO -L- POT Sta. 1076 + 00.00 - SHEET 23

MATCH TO -L- POC Sta. 1089 + 00.00 - SHEET 25

25 JUN 2021 10:25 AM N:\1-59868_Rdy_psh_24.dgn