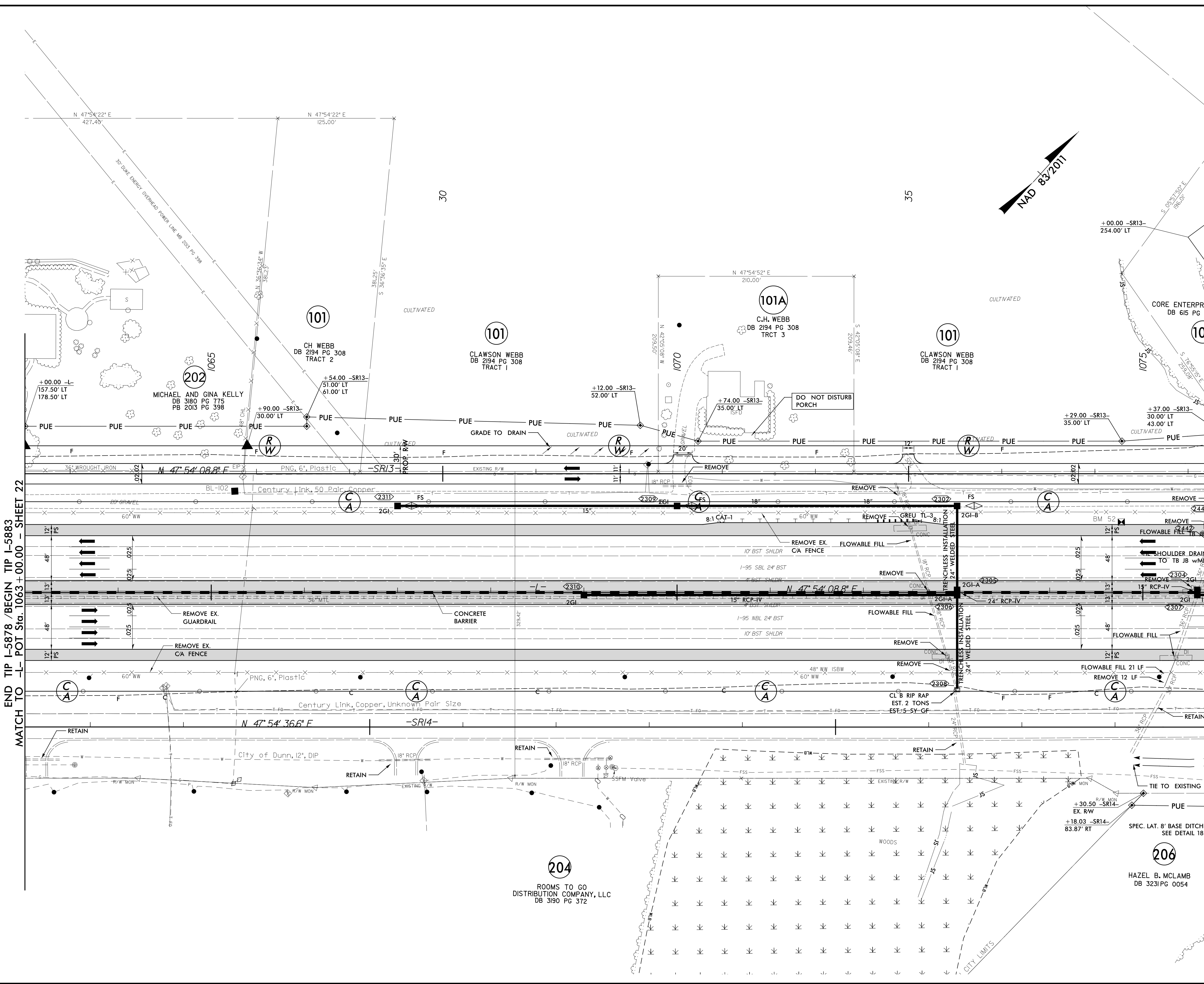


PROJECT REFERENCE NO. 1-5883		SHEET NO. 23	
RW SHEET NO.			
ROADWAY DESIGN ENGINEER SUNGATE DESIGN GROUP, P.A. SUSAN C. LANCASTER SEAL 027373 6/28/2021		HYDRAULICS ENGINEER SUNGATE DESIGN GROUP, P.A. JOSHUA G. DALTON SEAL 26971 6/28/2021	
DOCUMENT NOT CONSIDERED FINAL UNLESS ALL SIGNATURES COMPLETED			
Michael Baker Engineering, Inc. 4000 Rindgeville Pkwy Suite 600 Cary, NC 27518 NC License: P-1084		SUNGATE DESIGN GROUP, P.A. 600 ZONES FRANKLIN ROAD RALEIGH, NORTH CAROLINA 27604 NC COA No. C-4890	



REVISIONS

END TIP I-5878 / BEGIN TIP I-5883  
MATCH TO -L- POT Sta. 1063 + 00.00 - SHEET 22

MATCH TO -L- POT Sta. 1076 + 00.00 - SHEET 24

NOTE: DRIVEWAY RADII = 10'  
UNLESS SHOWN OTHERWISE

FOR -L- PROFILE SEE SHEET 75  
FOR -SR13- PROFILE SEE SHEET 118 & 119