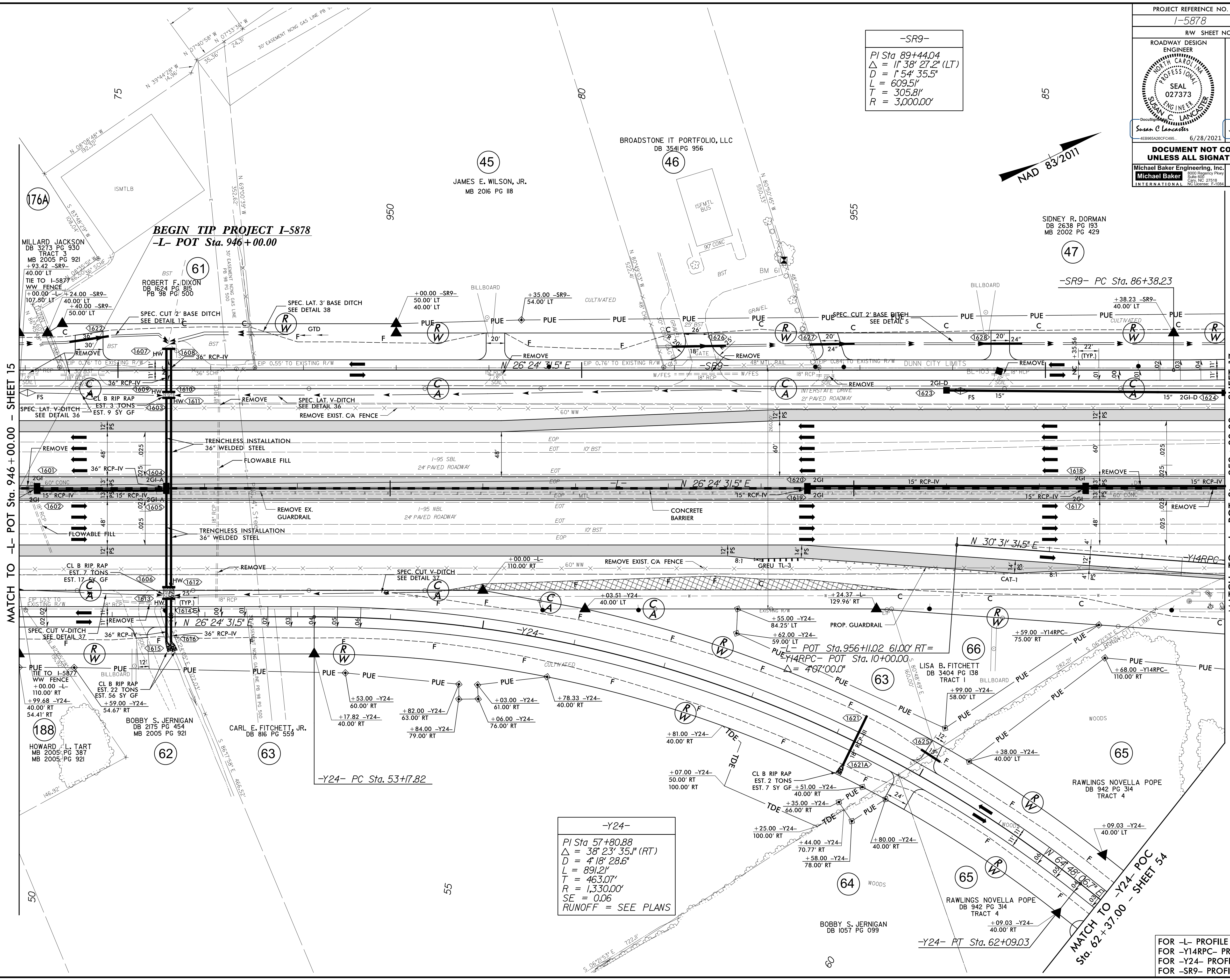


5/14/1999

R:\25-JUN-2021\1701-5986B-Rdwy-psh-16.dgn

PROJECT REFERENCE NO. 1-5878	SHEET NO. 16
RW SHEET NO.	
ROADWAY DESIGN ENGINEER SUSAN C. LANCASTER SEAL 027373 6/28/2021	HYDRAULICS ENGINEER JOSHUA G. DARTON SEAL 26971 6/28/2021
DOCUMENT NOT CONSIDERED FINAL UNLESS ALL SIGNATURES COMPLETED	
Michael Baker Engineering, Inc. INTERNATIONAL	SUNGATE DESIGN GROUP, P.A.

-SR9-
 PI Sta 89+44.04
 $\Delta = 1^\circ 38' 27.2" (LT)$
 $D = 1^\circ 54' 35.5"$
 $L = 609.51'$
 $T = 305.81'$
 $R = 3,000.00'$



-Y24-
 PI Sta 57+80.88
 $\Delta = 38^\circ 23' 35.1" (RT)$
 $D = 4^\circ 18' 28.6"$
 $L = 891.21'$
 $T = 463.07'$
 $R = 1,330.00'$
 $SE = 0.06$
 RUNOFF = SEE PLANS

FOR -L- PROFILE SEE SHEET 71
 FOR -Y14RPC- PROFILE SEE SHEET 95
 FOR -Y24- PROFILE SEE SHEET 100
 FOR -SR9- PROFILE SEE SHEET 102

MATCH TO -L- POT Sta. 946+00.00 - SHEET 15

MATCH TO -L- POT Sta. 959+00.00 - SHEET 17

MATCH TO -Y24- POC
 Sta. 62+37.00 - SHEET 54

BEGIN TIP PROJECT 1-5878
 -L- POT Sta. 946+00.00

-Y24- PC Sta. 53+17.82

-SR9- PC Sta. 86+38.23

MILLARD JACKSON
 DB 3273 PG 930
 TRACT 3
 MB 2005 PG 921
 +93.42 -SR9-

ROBERT F. DIXON
 DB 1624 PG 915
 PB 98 PG 500

JAMES E. WILSON, JR.
 MB 2016 PG 118

BROADSTONE IT PORTFOLIO, LLC
 DB 3541 PG 956

SIDNEY R. DORMAN
 DB 2638 PG 193
 MB 2002 PG 429

176A

61

45

46

47

188

62

63

63

66

65

64

65

-Y24- PT Sta. 62+09.03