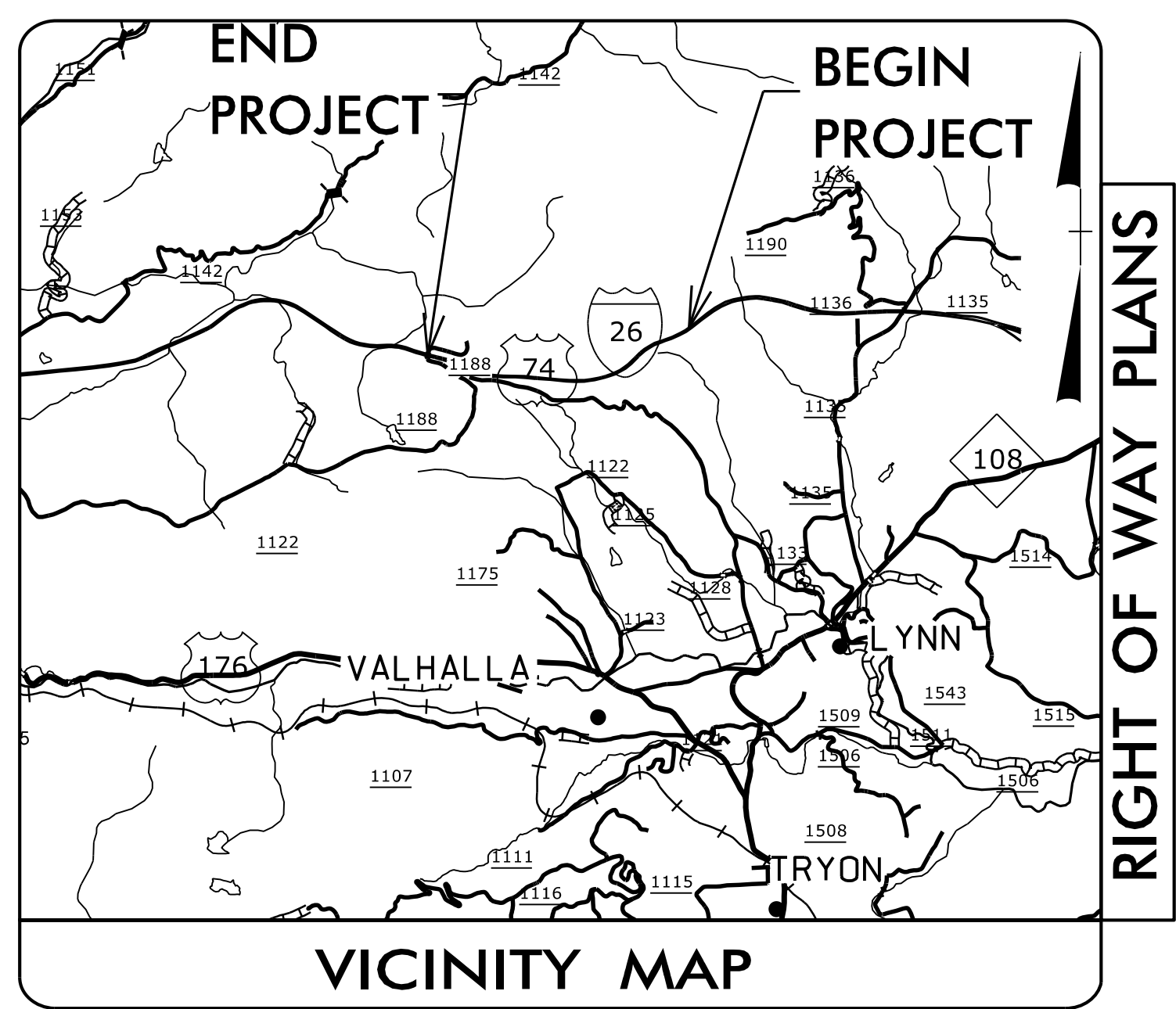


09/08/09
05-APR-2021 09:25
C:\JB\UB0s\Utilities\Engineering\UB0\Proj\15614.1075010_ut_tsh_U001.psh.dgn
\$\$\$\$USERVALUE\$\$\$\$

TIP PROJECT: 15614.1075010



RIGHT OF WAY PLANS

STATE OF NORTH CAROLINA
DIVISION OF HIGHWAYS

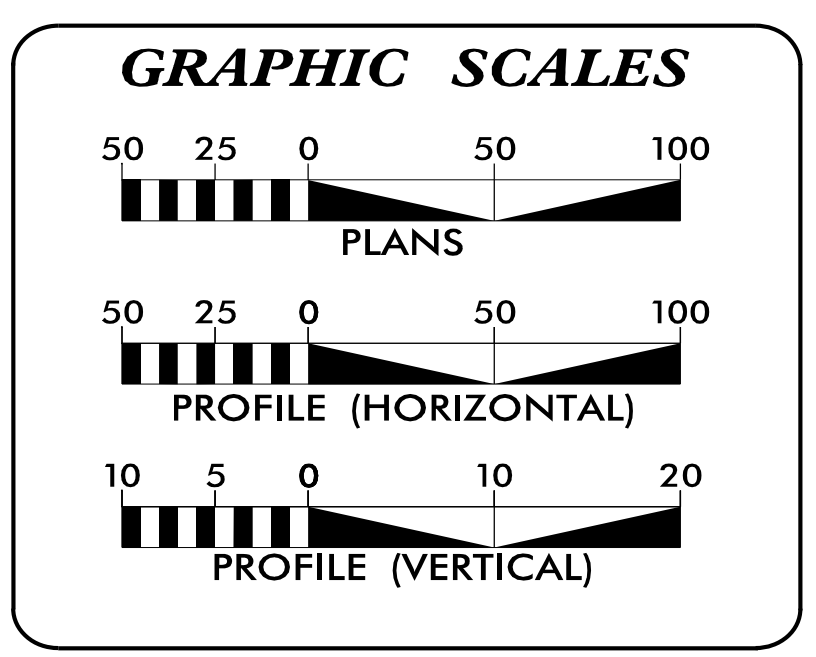
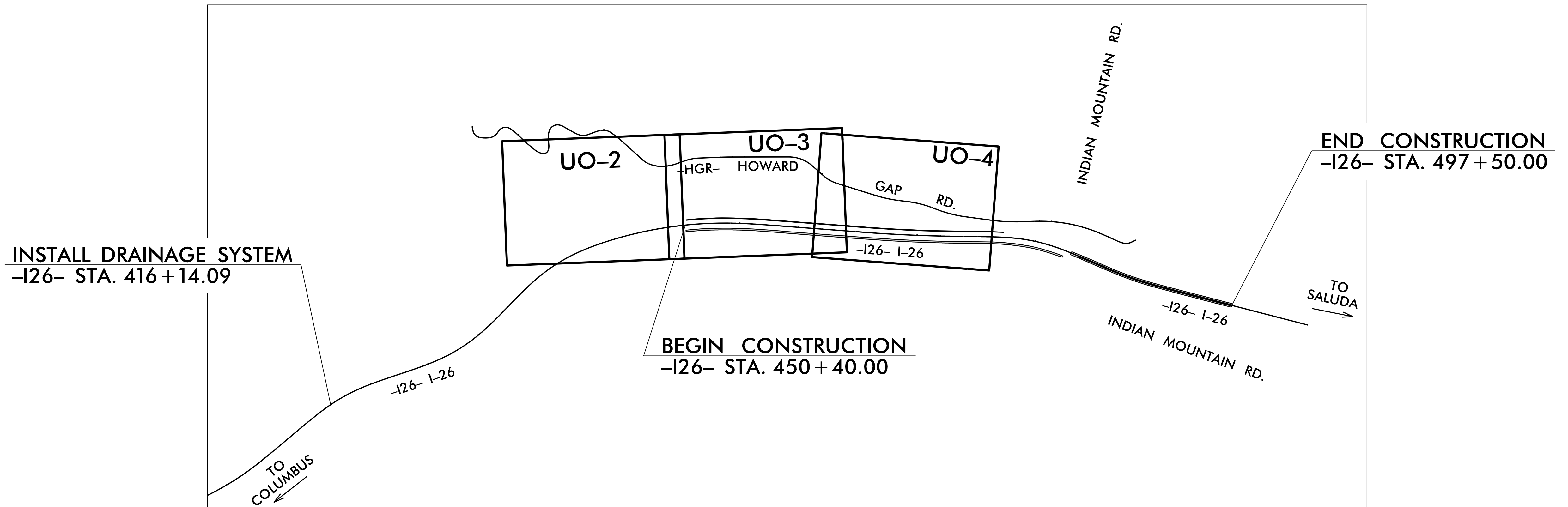
**UTILITIES BY OTHERS PLANS
POLK COUNTY**

LOCATION: I-26 (FROM APPROX. MM 64 TO APPROX. MM 62.5)
TYPE OF WORK: GRADING, DRAINAGE AND PAVING



T.I.P. NO.	SHEET NO.
15614.1075010	UO-1

NOTE:
ALL UTILITY WORK SHOWN ON THIS SHEET WILL BE DONE BY OTHERS. NO PAYMENT WILL BE MADE TO THE CONTRACTOR FOR UTILITY WORK SHOWN ON THIS SHEET.



INDEX OF SHEETS

SHEET NO.:	DESCRIPTION:
UO-1	TITLE SHEET
UO-02 THRU UO-04	UBO PLAN SHEETS

UTILITY OWNERS WITH CONFLICTS

(A) POWER TRANSMISSION - DUKE ENERGY
 (B) COMMUNICATIONS/CATV - SPECTRUM
 (C) COMMUNICATIONS - WINDSTREAM
 (D) WATER - TOWN OF TRYON, NC
 (E) COMMUNICATIONS - RIVERSTREET NETWORKS

PREPARED IN THE OFFICE OF:

TELICS
 PO BOX 6318
 HIGH POINT, NC 27262
 (336) 788-0150

JIM BROOKS UTILITY PROJECT MANAGER
CHRIS KENNEDY PROJECT UTILITY COORDINATOR

**DIVISION OF HIGHWAYS
DIVISION 14**
 253 WEBSTER RD.
 SYLVIA, NC 28779

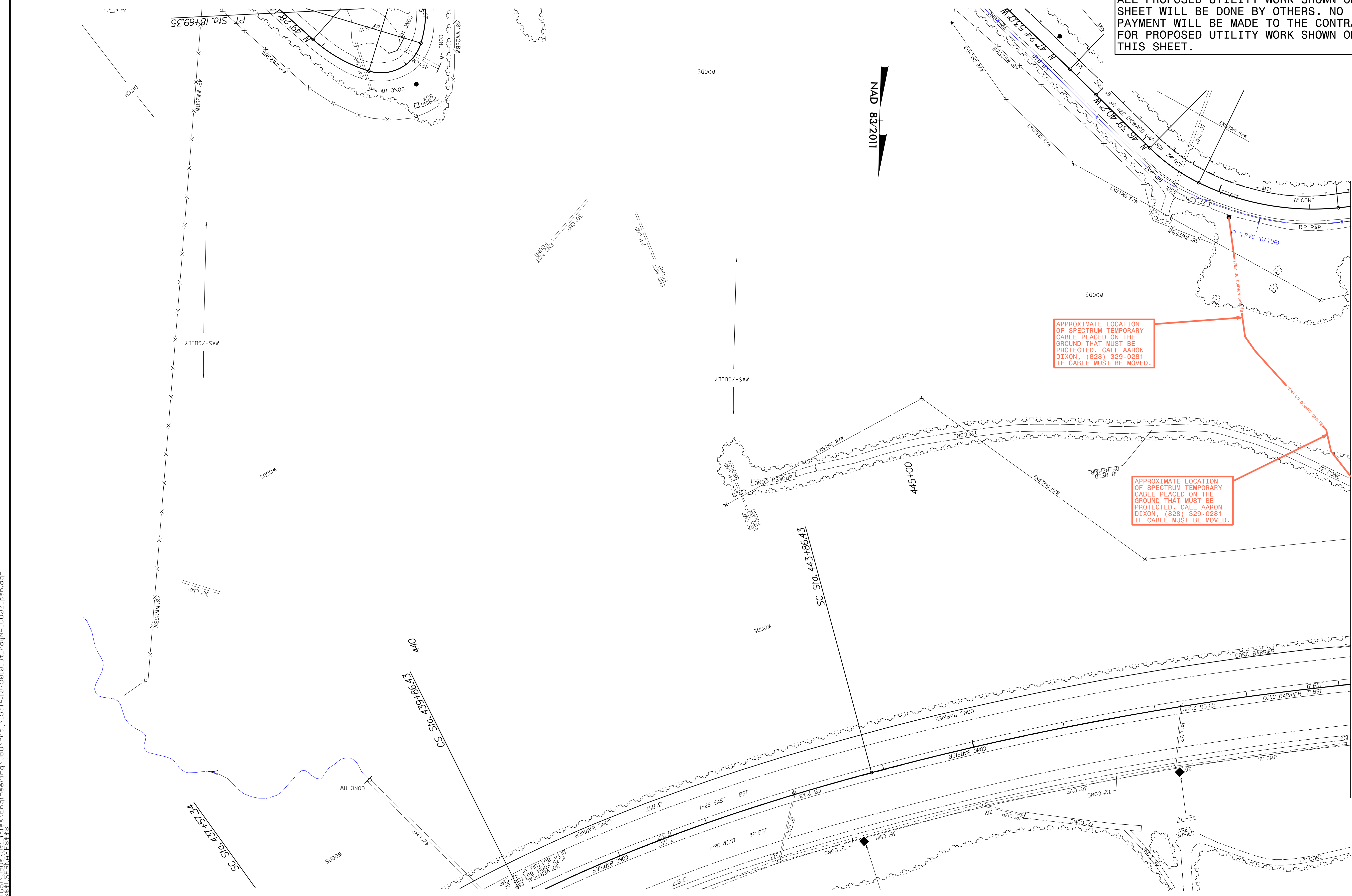
JEANETTE L. WHITE, PE SENIOR PROJECT ENGINEER
BOB GOLDING DIVISION UTILITY ENGINEER

5/14/99
22-MAR-2021 20:42
C:\GIS\UBO\Utilities\Engineering\UBO\Proj\15614.1075010.ut_rdy\NA_U002_psh.dgn
15614.1075010.dwg

PROJECT REFERENCE NO.	SHEET NO.
15614.1075010	U0-2
THIS SHEET CORRESPONDS TO RDY-NA	

UTILITIES BY OTHERS

ALL PROPOSED UTILITY WORK SHOWN ON THIS SHEET WILL BE DONE BY OTHERS. NO PAYMENT WILL BE MADE TO THE CONTRACTOR FOR PROPOSED UTILITY WORK SHOWN ON THIS SHEET.



MATCH LINE TO SHEET NO. U0-3

5/14/99
22-MAR-2021 20:36
C:\Users\jrburke\OneDrive\Engineering\UBO\Pro\15614.1075010-ut-rd46-U004-psh.dgn
jrburke

PROJECT REFERENCE NO.	SHEET NO.
15614.1075010	U0-4
THIS SHEET CORRESPONDS TO RDY-6	

UTILITIES BY OTHERS

ALL PROPOSED UTILITY WORK SHOWN ON THIS SHEET WILL BE DONE BY OTHERS. NO PAYMENT WILL BE MADE TO THE CONTRACTOR FOR PROPOSED UTILITY WORK SHOWN ON THIS SHEET.

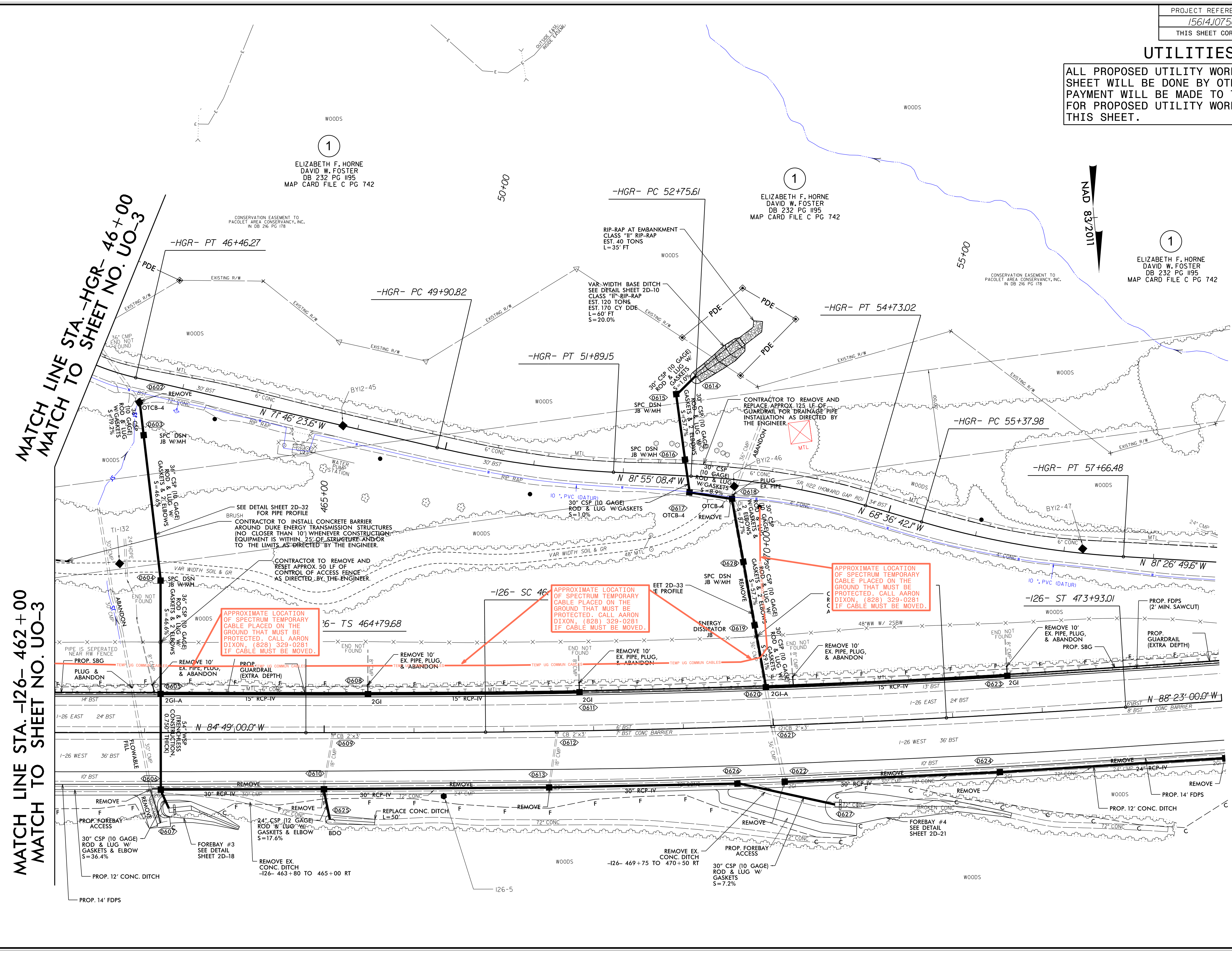
MATCH LINE STA. -HGR- 46+00
MATCH TO SHEET NO. UO-3

MATCH LINE STA. -I26- 462+00
MATCH TO SHEET NO. UO-3

1
ELIZABETH F. HORNE
DAVID W. FOSTER
DB 232 PG I195
MAP CARD FILE C PG 742

1
ELIZABETH F. HORNE
DAVID W. FOSTER
DB 232 PG I195
MAP CARD FILE C PG 742

1
ELIZABETH F. HORNE
DAVID W. FOSTER
DB 232 PG I195
MAP CARD FILE C PG 742



CONSERVATION EASEMENT TO
PACOLET AREA CONSERVANCY, INC.
N DB 246 PG I18

CONSERVATION EASEMENT TO
PACOLET AREA CONSERVANCY, INC.
N DB 246 PG I18

SEE DETAIL SHEET 2D-32
FOR PIPE PROFILE
CONTRACTOR TO INSTALL CONCRETE BARRIER
AROUND DUKE ENERGY TRANSMISSION STRUCTURES
(NO CLOSER THAN 10') WHENEVER CONSTRUCTION
EQUIPMENT IS WITHIN 25' OF STRUCTURE AND/OR
TO THE LIMITS AS DIRECTED BY THE ENGINEER.

CONTRACTOR TO REMOVE AND
RESET APPROX. 50 LF OF
CONTROL OF ACCESS FENCE
AS DIRECTED BY THE ENGINEER.

APPROXIMATE LOCATION
OF SPECTRUM TEMPORARY
CABLE PLACED ON THE
GROUND THAT MUST BE
PROTECTED. CALL AARON
DIXON, (828) 329-0281
IF CABLE MUST BE MOVED.

APPROXIMATE LOCATION
OF SPECTRUM TEMPORARY
CABLE PLACED ON THE
GROUND THAT MUST BE
PROTECTED. CALL AARON
DIXON, (828) 329-0281
IF CABLE MUST BE MOVED.

APPROXIMATE LOCATION
OF SPECTRUM TEMPORARY
CABLE PLACED ON THE
GROUND THAT MUST BE
PROTECTED. CALL AARON
DIXON, (828) 329-0281
IF CABLE MUST BE MOVED.

REMOVE EX.
CONC. DITCH
-I26- 463+80 TO 465+00 RT

REMOVE EX.
CONC. DITCH
-I26- 469+75 TO 470+50 RT

REMOVE EX.
CONC. DITCH
-I26- 469+75 TO 470+50 RT

REMOVE EX.
CONC. DITCH
-I26- 469+75 TO 470+50 RT