

MATCH LINE MATCH TO SHEET NO. 9

NOTE:
PLACE TEMPORARY ROCK SEDIMENT DAMS TYPE - B
AND TEMPORARY ROCK SILT CHECKS TYPE - A AT
DRAINAGE OUTLETS.

IN LIEU OF ROCK INLET SEDIMENT TRAP TYPE C,
UTILIZE FABRIC INSERT INLET PROTECTION
DEVICES IN AREAS WHERE WATER MAY
POND ON ROAD OPEN TO LIVE TRAFFIC AND
ON JUNCTION BOXES INSTALLED ON STEEP SLOPES.

SA SENSITIVE AREA

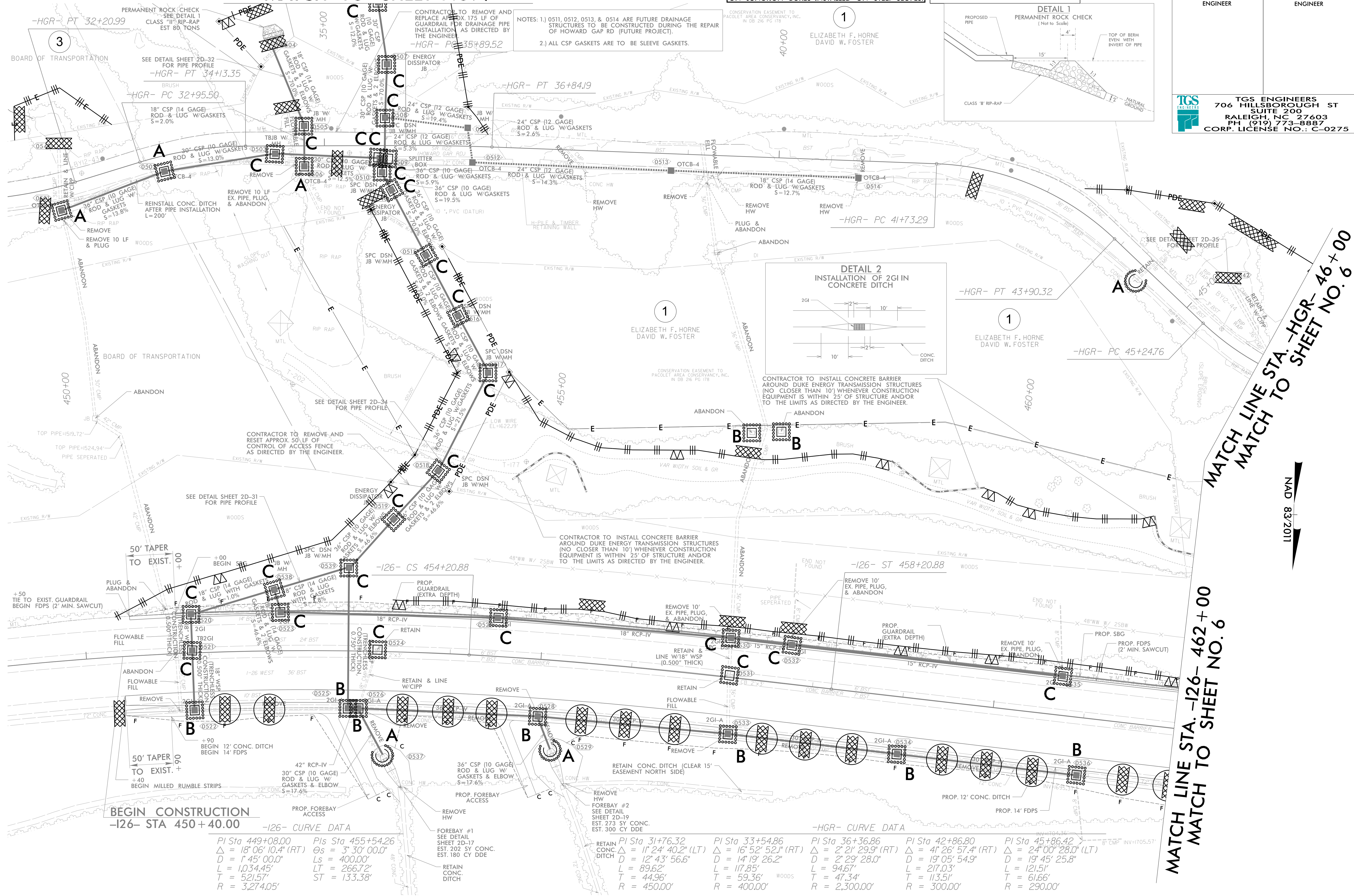
Polk County

PROJECT REFERENCE NO. 15614.1075010
SHEET NO. EC-11/CONST.5

R/W SHEET NO.

ROADWAY DESIGN ENGINEER
HYDRAULICS ENGINEER

TGS ENGINEERS
706 HILLSBOROUGH ST
SUITE 200
RALEIGH, NC 27603
PH (919) 773-8887
CORP. LICENSE NO.: C-0275



BEGIN CONSTRUCTION
-126- STA 450+40.00

-126- CURVE DATA

PI Sta 449+08.00	PIs Sta 455+54.26
$\Delta = 18^{\circ} 08' 10.4''$ (RT)	$\Theta_s = 3^{\circ} 30' 00.0''$
$D = 1^{\circ} 45' 00.0''$	$L_s = 400.00'$
$L = 1,034.45'$	$LT = 266.72'$
$T = 521.57'$	$ST = 133.38'$
$R = 3,274.05'$	

-HGR- CURVE DATA

PI Sta 31+76.32	PI Sta 33+54.86	PI Sta 36+36.86	PI Sta 42+86.80	PI Sta 45+86.42
$\Delta = 11^{\circ} 24' 40.2''$ (LT)	$\Delta = 16^{\circ} 52' 52.1''$ (RT)	$\Delta = 2^{\circ} 29' 29.9''$ (RT)	$\Delta = 41^{\circ} 26' 57.4''$ (RT)	$\Delta = 24^{\circ} 00' 28.0''$ (LT)
$D = 12^{\circ} 43' 56.6''$	$D = 14^{\circ} 19' 26.2''$	$D = 2^{\circ} 29' 28.0''$	$D = 19^{\circ} 05' 54.9''$	$D = 19^{\circ} 45' 25.8''$
$L = 89.62'$	$L = 89.62'$	$L = 117.85'$	$L = 94.67'$	$L = 121.51'$
$T = 44.96'$	$T = 59.36'$	$T = 47.34'$	$T = 113.51'$	$T = 61.66'$
$R = 450.00'$	$R = 400.00'$	$R = 2,300.00'$	$R = 300.00'$	$R = 290.00'$

NAD 83/2011