

8/17/99

SA SENSITIVE AREA

LANDSLIDE OUTLINES - ACTIVE

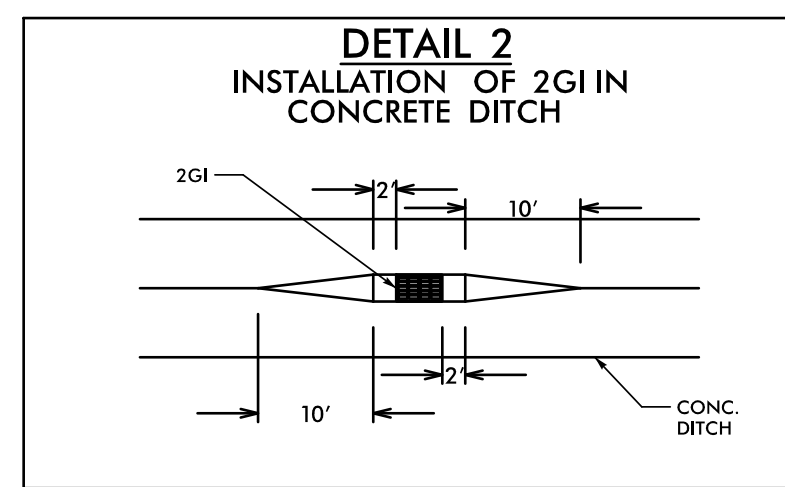
ALL DUKE TRANSMISSION LINES ARE TO BE TREATED WITH CLEARANCE AND OFFSET GUIDELINES AS ESTABLISHED FOR 100KV POWERED RATING.

-HGR- CURVE DATA

PI Sta 45+86.42 Δ = 24° 00' 28.0" (LT) D = 19' 45" 25.8" L = 121.51' T = 61.66' R = 290.00'	PI Sta 50+90.24 Δ = 10° 08' 44.8" (LT) D = 5' 06" 56.5" L = 198.33' T = 99.42' R = 1,120.00'	PI Sta 53+74.76 Δ = 13° 18' 26.3" (RT) D = 6' 44" 26.4" L = 197.42' T = 99.16' R = 850.00'	PI Sta 56+52.71 Δ = 12° 50' 07.5" (LT) D = 5' 37" 02.0" L = 228.50' T = 114.73' R = 1,020.00'
--	---	---	--

-I26- CURVE DATA

PIs Sta 466+13.01 Θs = 0° 30' 00.0" Ls = 200.00' LT = 133.33' ST = 66.67'	PI Sta 469+36.39 Δ = 2° 34' 00.0" (LT) D = 0° 30' 00.0" L = 513.33' T = 256.71' R = 11,459.16'	PIs Sta 472+59.68 Θs = 0° 30' 00.0" Ls = 200.00' LT = 133.33' ST = 66.67'
---	---	---



PROJECT REFERENCE NO. 15614.1075010 SHEET NO. 6

R/W SHEET NO.

ROADWAY DESIGN ENGINEER: [Signature]

HYDRAULICS ENGINEER: [Signature]

SEAL 047943

SEAL 044158

DATE: 12/2021

DOCUMENT NOT CONSIDERED FINAL
UNLESS ALL SIGNATURES COMPLETED

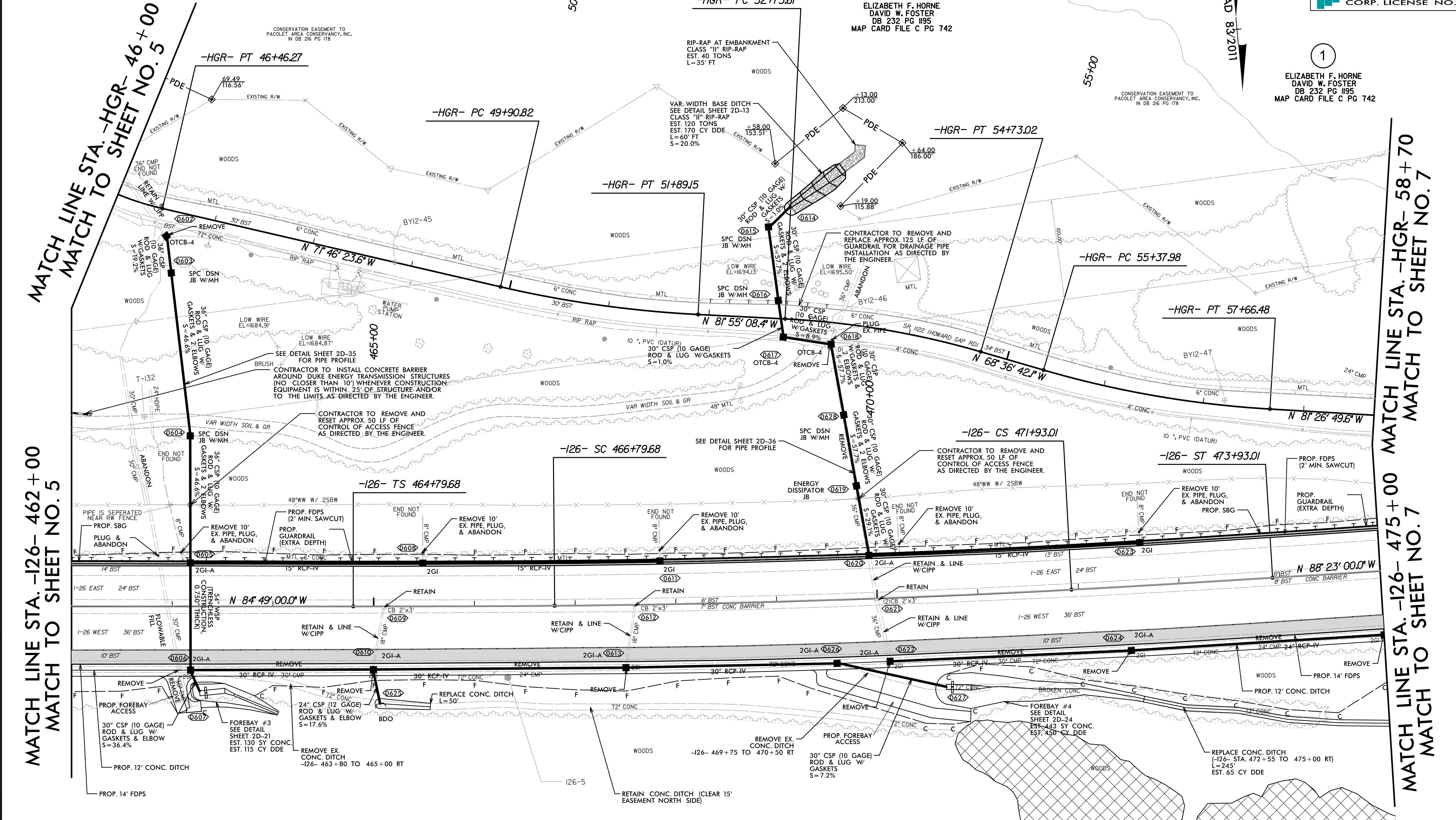
TGS ENGINEERS
804-C N. LAFAYETTE ST
SHELBY, NC 28150
PH: (704) 476-0003
CORP. LICENSE NO.: C-0275

NOTE: ALL CSP GASKETS ARE TO BE SLEEVE GASKETS.

ELIZABETH F. HORNE
DAVID W. FOSTER
DB 232 PG 1195
MAP CARD FILE C PG 742

ELIZABETH F. HORNE
DAVID W. FOSTER
DB 232 PG 1195
MAP CARD FILE C PG 742

ELIZABETH F. HORNE
DAVID W. FOSTER
DB 232 PG 1195
MAP CARD FILE C PG 742



REVISIONS

4/8/2021 X:\NCDDT I-26 Howard Gap Rd Rehab\Roadway\Proj\I-26-Howard Gap_Rdy_psh_06.dgn