

PHASING DIAGRAM

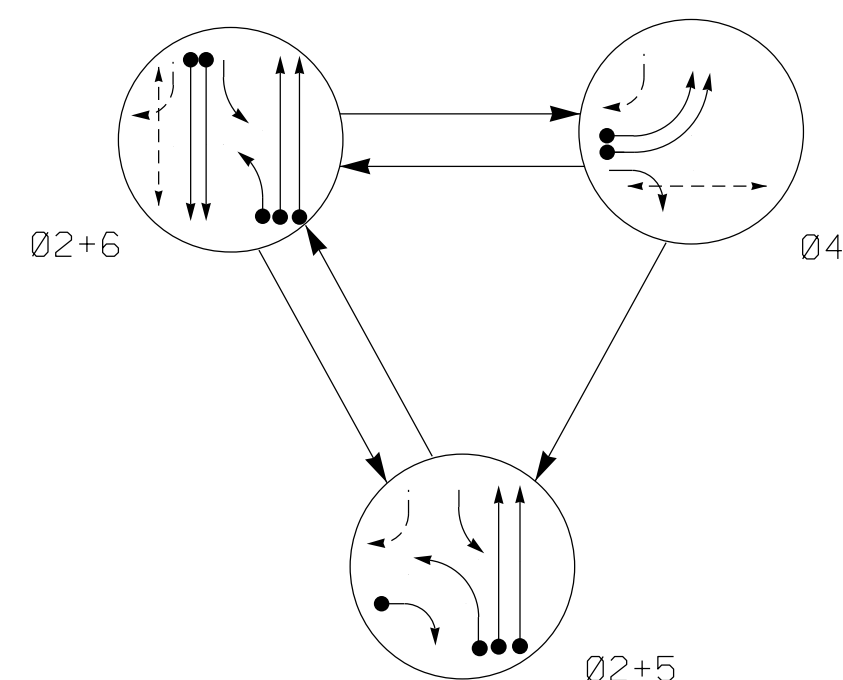
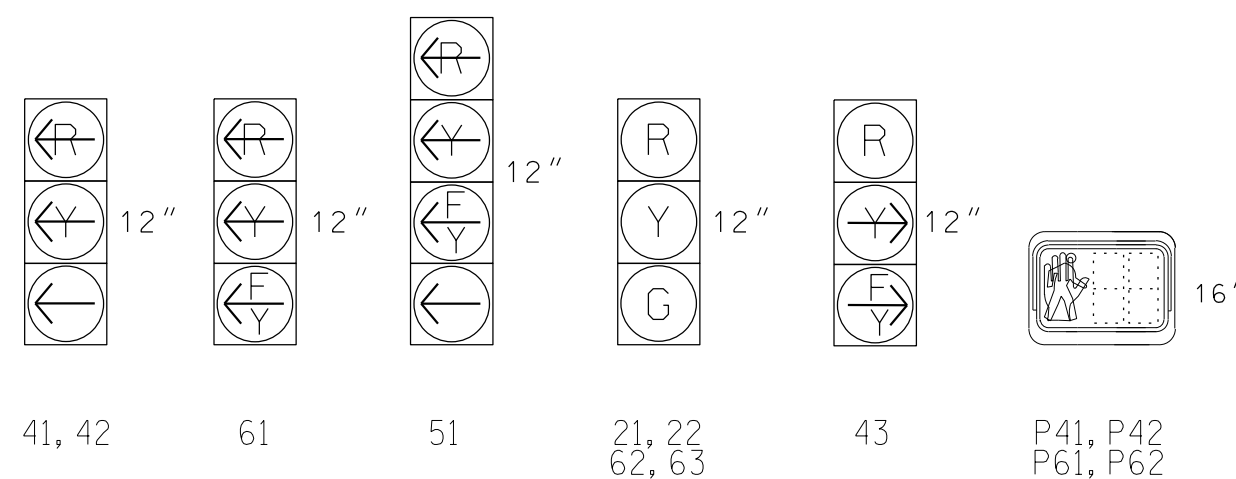


TABLE OF OPERATION table with columns for SIGNAL FACE, PHASE (02+5, 02+6, 04, FLASH), and signal sequence (e.g., 21, 22, 41, 42, 43, 51, 61, 62, 63, P41, P42, P61, P62).

SIGNAL FACE I.D.

All Heads L.E.D.



ASC/3 DETECTOR INSTALLATION CHART

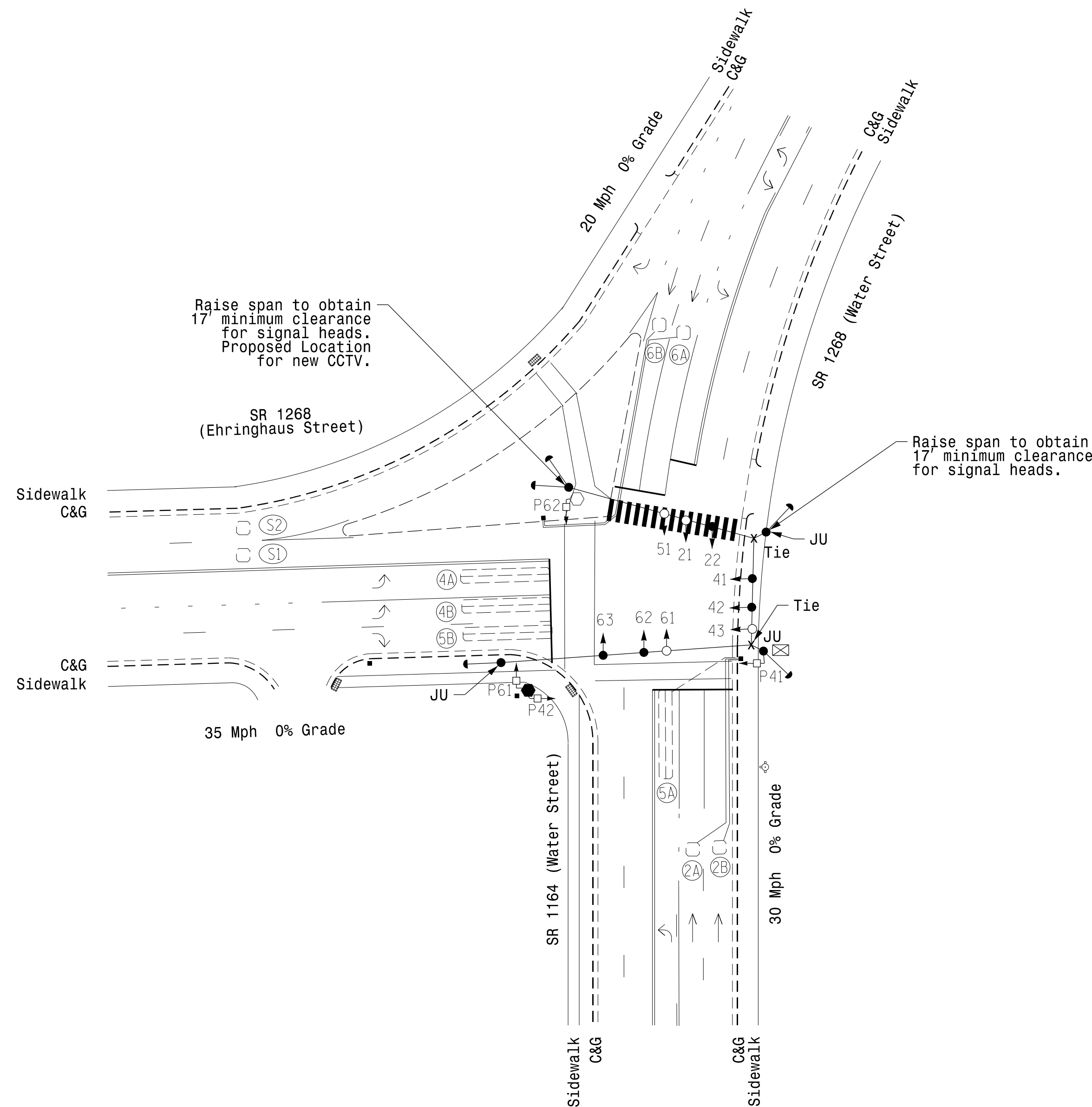
Detector installation chart table with columns for LOOP, SIZE (FT), DISTANCE FROM STOPBAR (FT), TURNS, NEW LOOP, PHASE, CALLING, EXTEND TIME, DELAY TIME, USE ADDED INITIAL, TYPE, LOOP, SYSTEM, LOOP, NEW CARD.

*Measured from Edge of Crosswalk Across Ehringhaus St.

PHASING DIAGRAM DETECTION LEGEND

- DETECTED MOVEMENT
UNDETECTED MOVEMENT (OVERLAP)
UNSIGNALIZED MOVEMENT
PEDESTRIAN MOVEMENT

- 3 Phase Fully Actuated (Elizabeth City Signal System)
NOTES
1. Refer to "Roadway Standard Drawings NCDOT" dated January 2018 and "Standard Specifications for Roads and Structures" dated January 2018.
2. Do not program signal for late night flashing operation unless otherwise directed by the Engineer.
3. Phase 5 may be lagged.
4. Set all detector units to presence mode.
5. Locate new cabinet so as not to obstruct sight distance of vehicles turning right on red.
6. Omit "WALK" and flashing "DON'T WALK" with no pedestrian calls.
7. Program pedestrian heads to countdown the flashing "Don't Walk" time only.
8. Pedestrian pedestals are conceptual and shown for reference only. See sheets P1-P3 for pushbutton location details.
9. Pavement markings are existing.
10. Maximum times shown in timing chart are for free-run operation only. Coordinated signal system timing values supersede these values.



ASC/3 TIMING CHART

Timing chart table with columns for FEATURE, PHASE (2, 4, 5, 6), and timing values (e.g., Min Green, Delayed Green, Walk, Ped Clear, Veh. Extension).

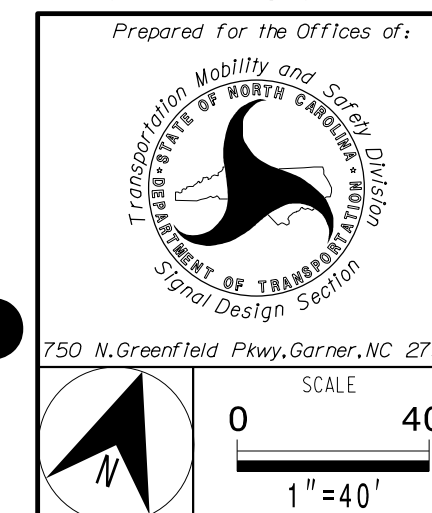
* These values may be field adjusted. Do not adjust Min Green and Extension times for phases 2 and 6 lower than what is shown. Min Green for all other phases should not be lower than 4 seconds.

LEGEND

- PROPOSED: Traffic Signal Head, Modified Signal Head, Pedestrian Signal Head, Signal Pole with Guy, Inductive Loop Detector, Controller & Cabinet, Junction Box, 2-in Underground Conduit, Directional Arrow, Metal Strain Pole, Fire Hydrant, Truncated Domes, Type II Signal Pedestal.
EXISTING: N/A, N/A, N/A, N/A, N/A, N/A, N/A, N/A.

Signal Upgrade

DOCUMENT NOT CONSIDERED FINAL UNLESS ALL SIGNATURES COMPLETED



Project information: SR 1268 (Water St.) / SR 1164 (Water St.) at SR 1268 (Ehringhaus St.), Division 1 Pasquotank County Elizabeth City, PLAN DATE: February 2018, REVIEWED BY: AJ Davis, PREPARED BY: JA Le, REVIEWED BY: LM Moon.

