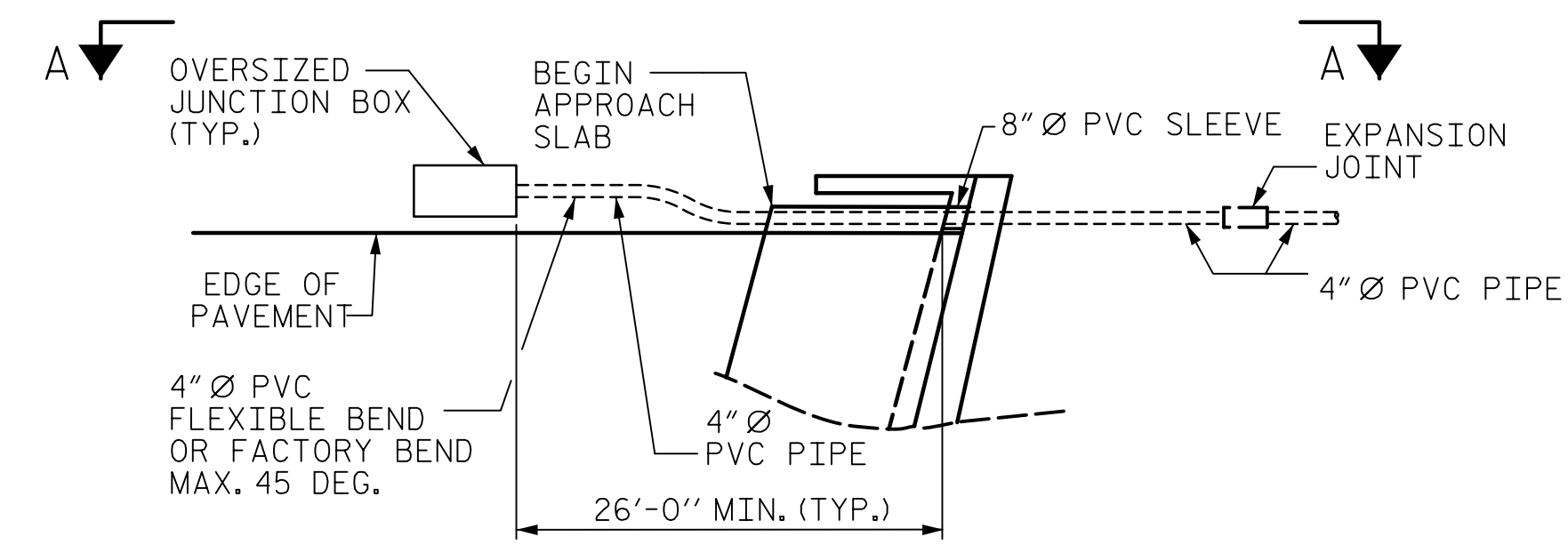
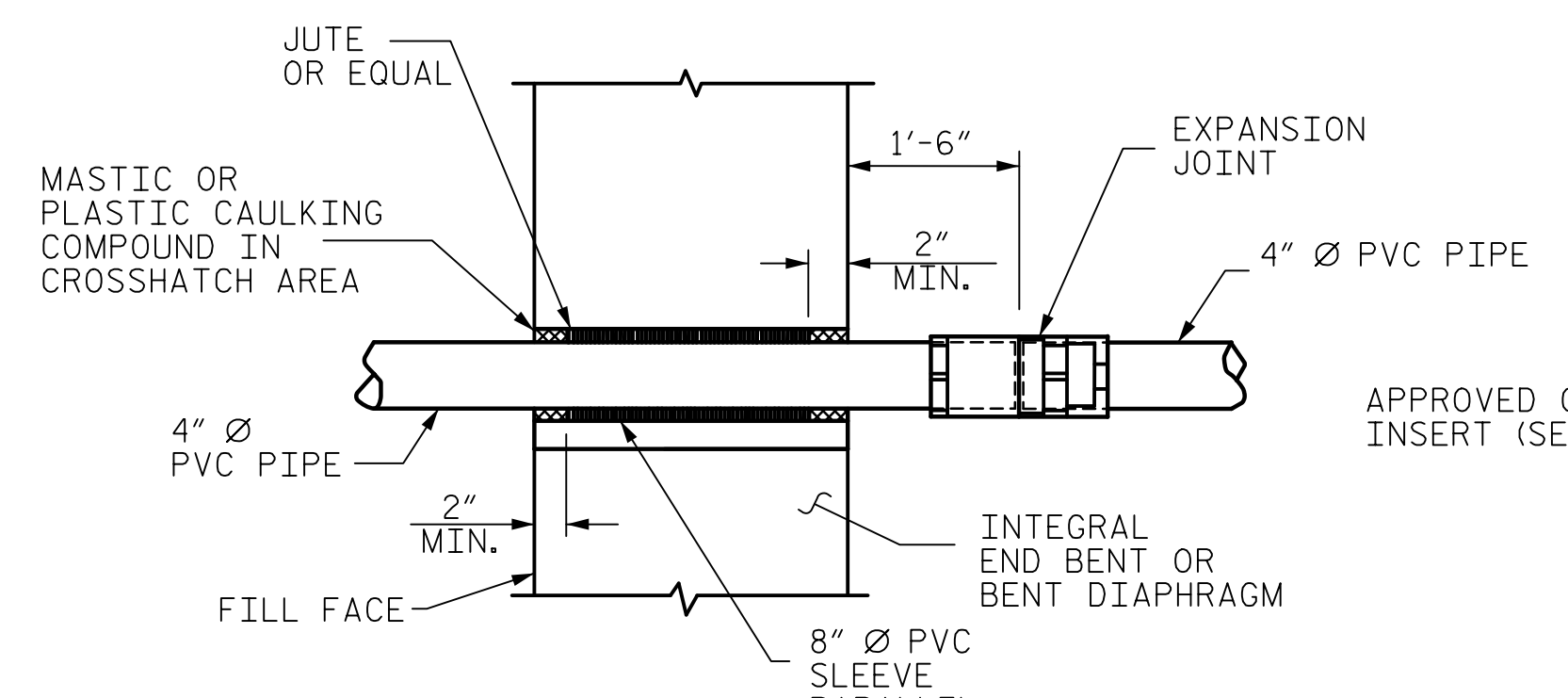


DATE: 3/17/2020
TIME: 2:34:25 PM

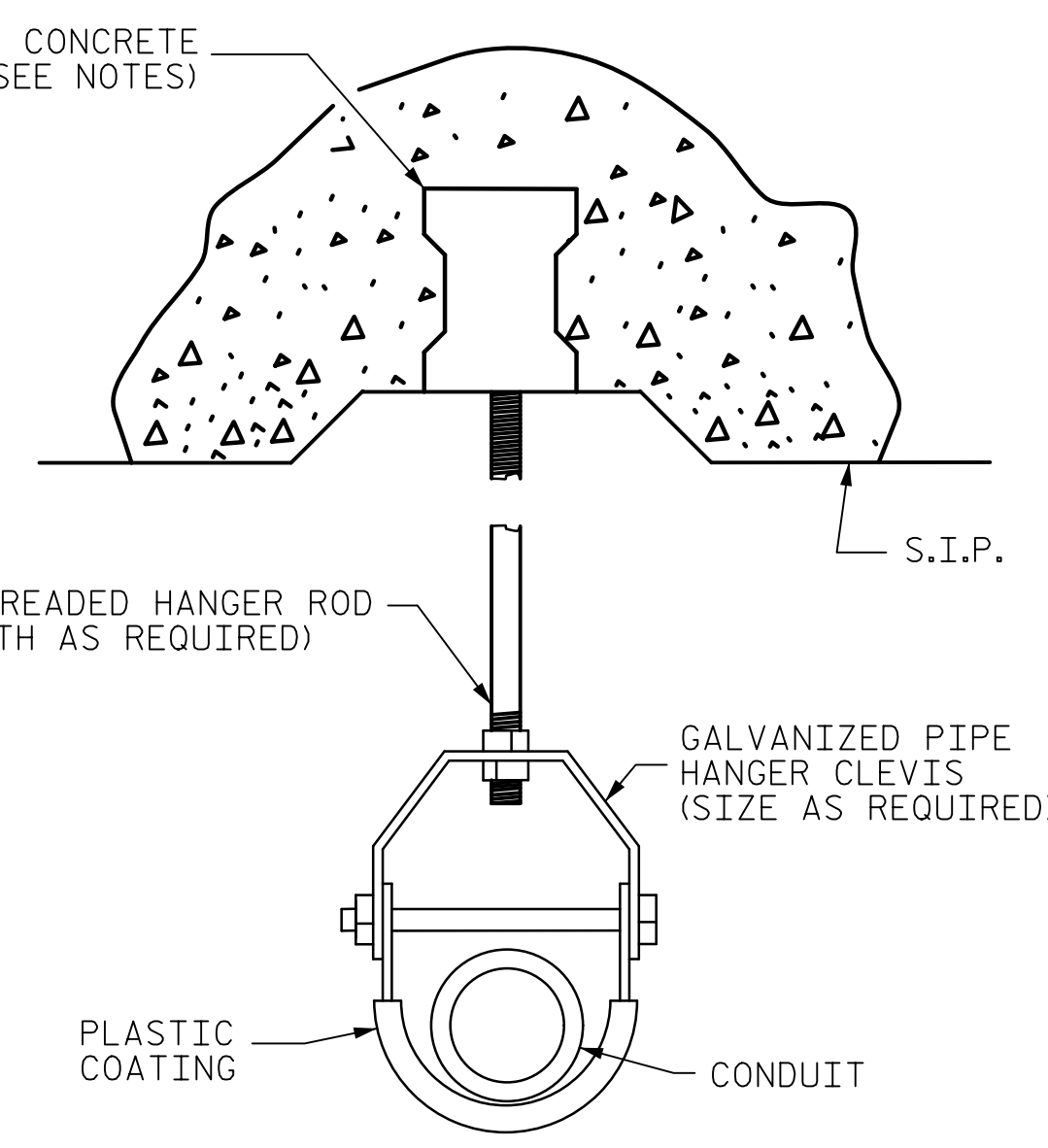
USER: \\morrison\Projects\60557176 - B-5980\900_GAD_GIS\900_GAD\01\NCDDT_T\Structures\04 Drawings\400_B7_534_B5980_SML_F005.dgn



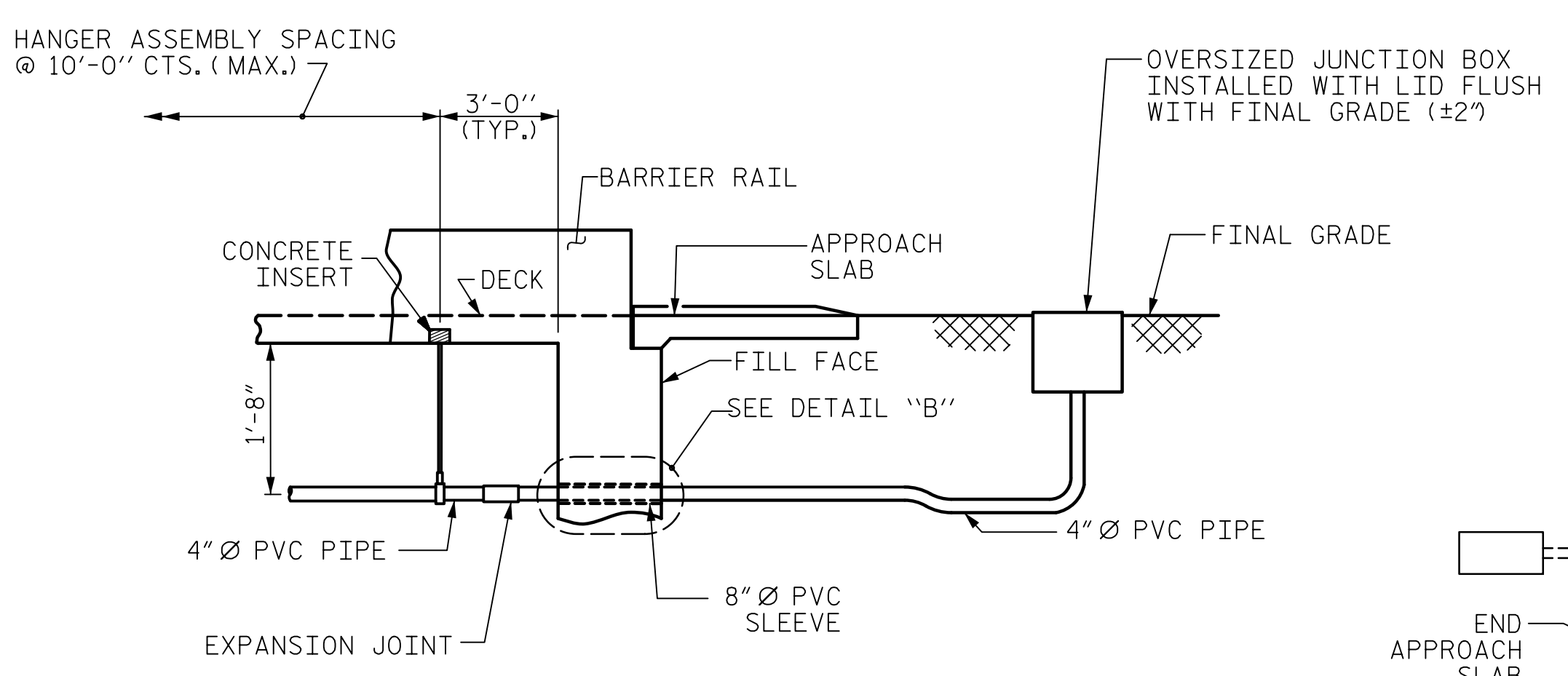
DETAIL "A"
TERMINATION OF CONDUIT
AT WING WALL TO
OVERSIZED JUNCTION BOX



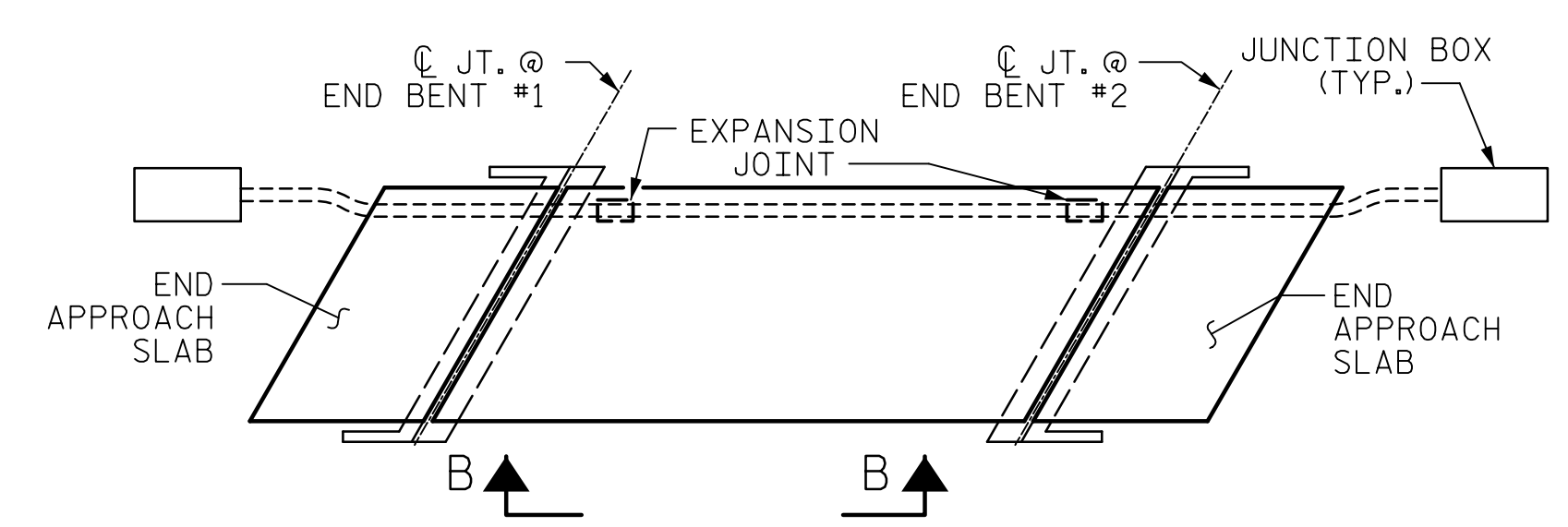
DETAIL "B"
PVC SLEEVE INSTALLATION & EXPANSION JOINT
AT BACKWALL



DETAIL "C"
HANGER ASSEMBLY

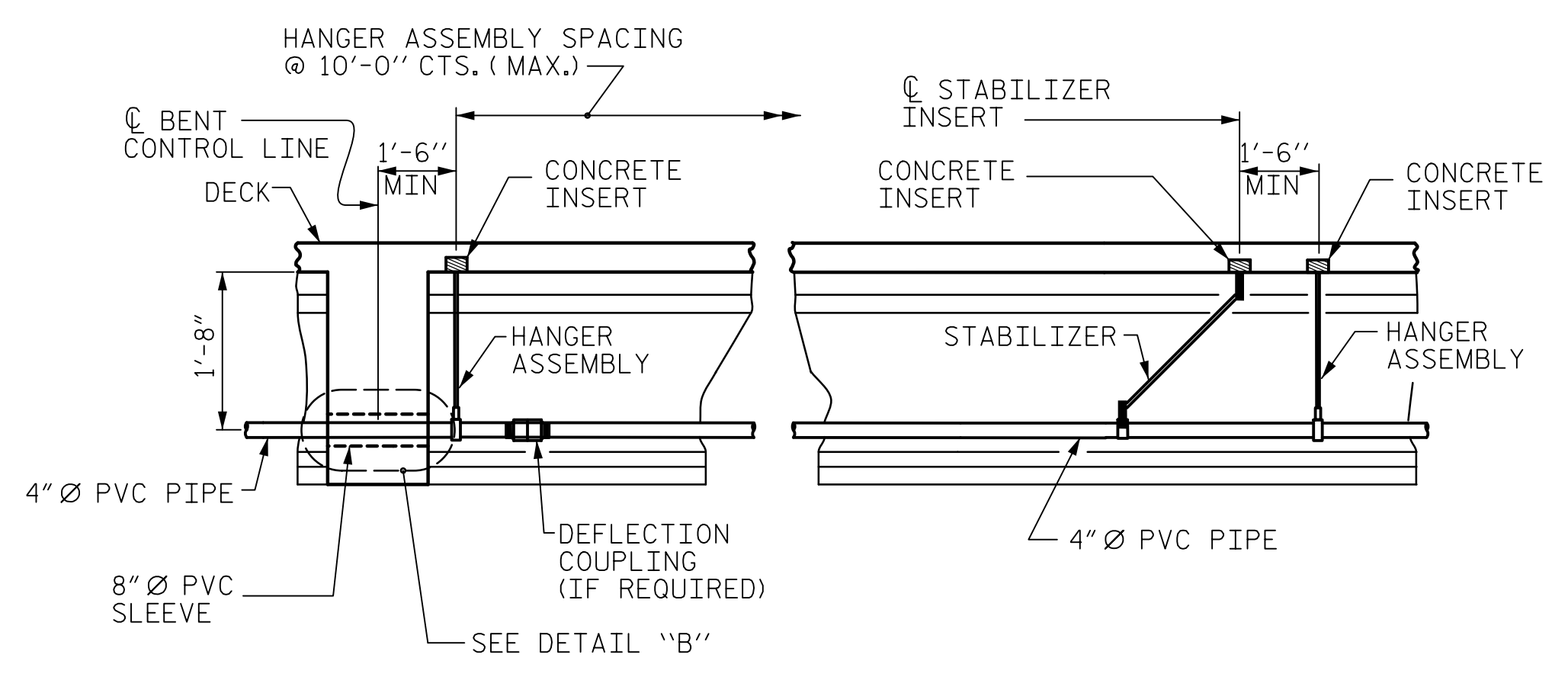


VIEW A-A

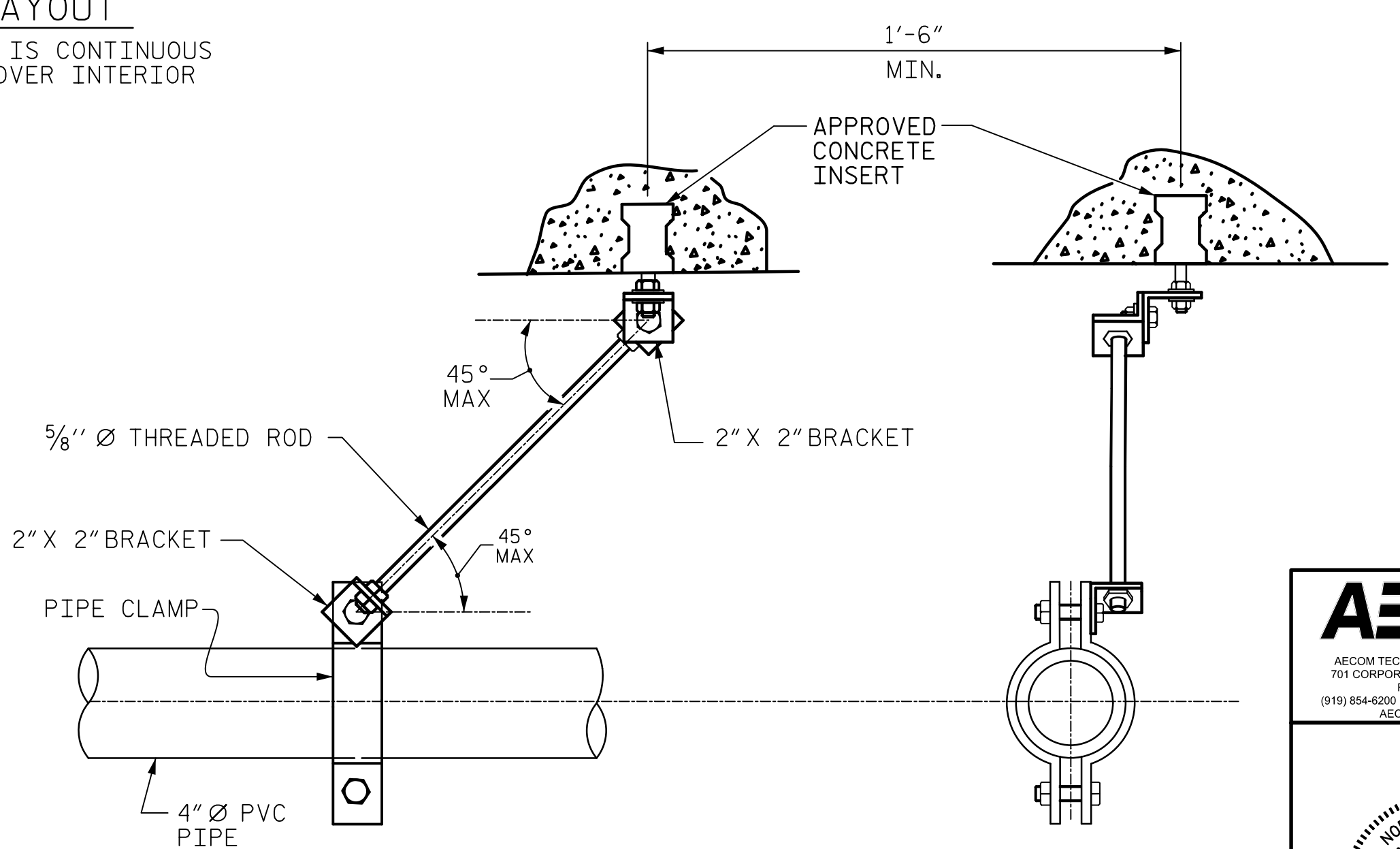


CONDUIT LAYOUT

NOTE: SUPERSTRUCTURE IS CONTINUOUS FOR LIVE LOAD OVER INTERIOR BENT.



VIEW B-B
PRESTRESSED GIRDERS
CONTINUOUS FOR LIVE LOAD



DETAIL "E"
STABILIZER

NOTES

THE INSTALLATION OF THE CONDUIT SYSTEM SHALL BE PAID FOR AS LINEAR FEET. THE PRICE SHALL INCLUDE ALL CONDUIT, HANGERS, STABILIZERS, EXPANSION JOINTS, CONCRETE INSERTS, PVC SLEEVES AND ALL NECESSARY HARDWARE TO COMPLETE THE WORK.

THE CONTRACTOR SHALL FIELD VERIFY THAT THE CONDUIT SYSTEM IS NOT IN CONFLICT WITH THE GUARDRAIL POST.

SEE DETAIL "C" FOR HANGER ASSEMBLY INSTALLATION.

INSTALL SLEEVES PARALLEL TO GIRDERS. SEE DETAIL "B" FOR SLEEVE INSTALLATION.

INSTALL STABILIZERS MIDWAY BETWEEN DECK EXPANSION JOINTS. STABILIZER CAN NOT BE INSTEAD OF A HANGER ASSEMBLY.

INSTALL EXPANSION JOINTS AT EACH END BENT.

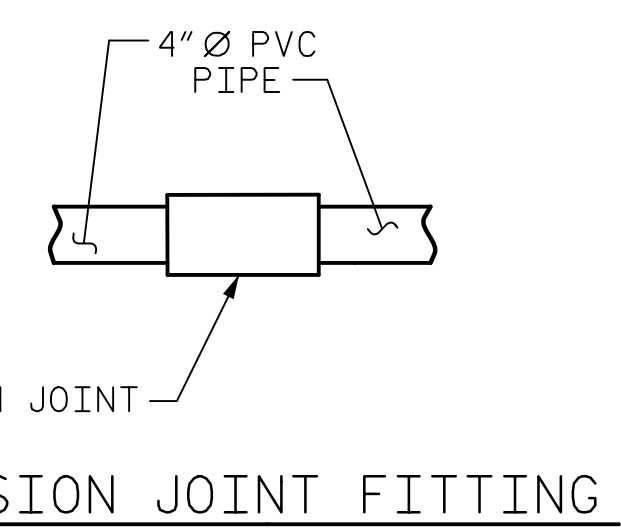
THE CONCRETE SCREW INSERT SHALL HAVE A ROD SIZE OF 5/8" AND A PULL FORCE OF 1260 lbs.

FOR FIBER OPTIC CONDUIT SYSTEM WITH HANGERS, SEE SPECIAL PROVISIONS.

PVC PIPE AND COUPLINGS SHALL BE SCHEDULE 80.

FOR OVERSIZED JUNCTION BOX, SEE ARTICLE 1098-5 OF THE STANDARD SPECIFICATIONS.

PAY LENGTH = 284 LINEAR FEET



EXPANSION JOINT FITTING

PROJECT NO. B-5980
NASH COUNTY
STATION: 42+56.82 -Y1-

AECOM
AECOM TECHNICAL SERVICES OF NC, INC.
701 CORPORATE CENTER DRIVE, SUITE 475
RALEIGH, NC 27607
www.aecom.com
(919) 854-6200
AECOM License No. F-0342

3/17/2020
NORTH CAROLINA PROFESSIONAL ENGINEER
SEAL 030474
J.C. MORRISON
DocuSigned by:
John C. Morrison
#27E14AC87E4E

STATE OF NORTH CAROLINA DEPARTMENT OF TRANSPORTATION RALEIGH					
SUPERSTRUCTURE FIBER OPTIC CONDUIT SYSTEM WITH HANGERS					
REVISIONS					
NO.	BY:	DATE:	NO.	BY:	DATE:
1			3		
2			4		
SHEET NO. S-34					TOTAL SHEETS 34

DRAWN BY : T.B. STUMP DATE : 3/2020
CHECKED BY : J.C. MORRISON DATE : 3/2020
DESIGNED BY : T.B. STUMP DATE : 3/2020
DESIGN CHECKED BY : J.C. MORRISON DATE : 3/2020

ELECTRIC CONDUIT DETAILS

DOCUMENT NOT CONSIDERED FINAL UNLESS ALL SIGNATURES COMPLETED