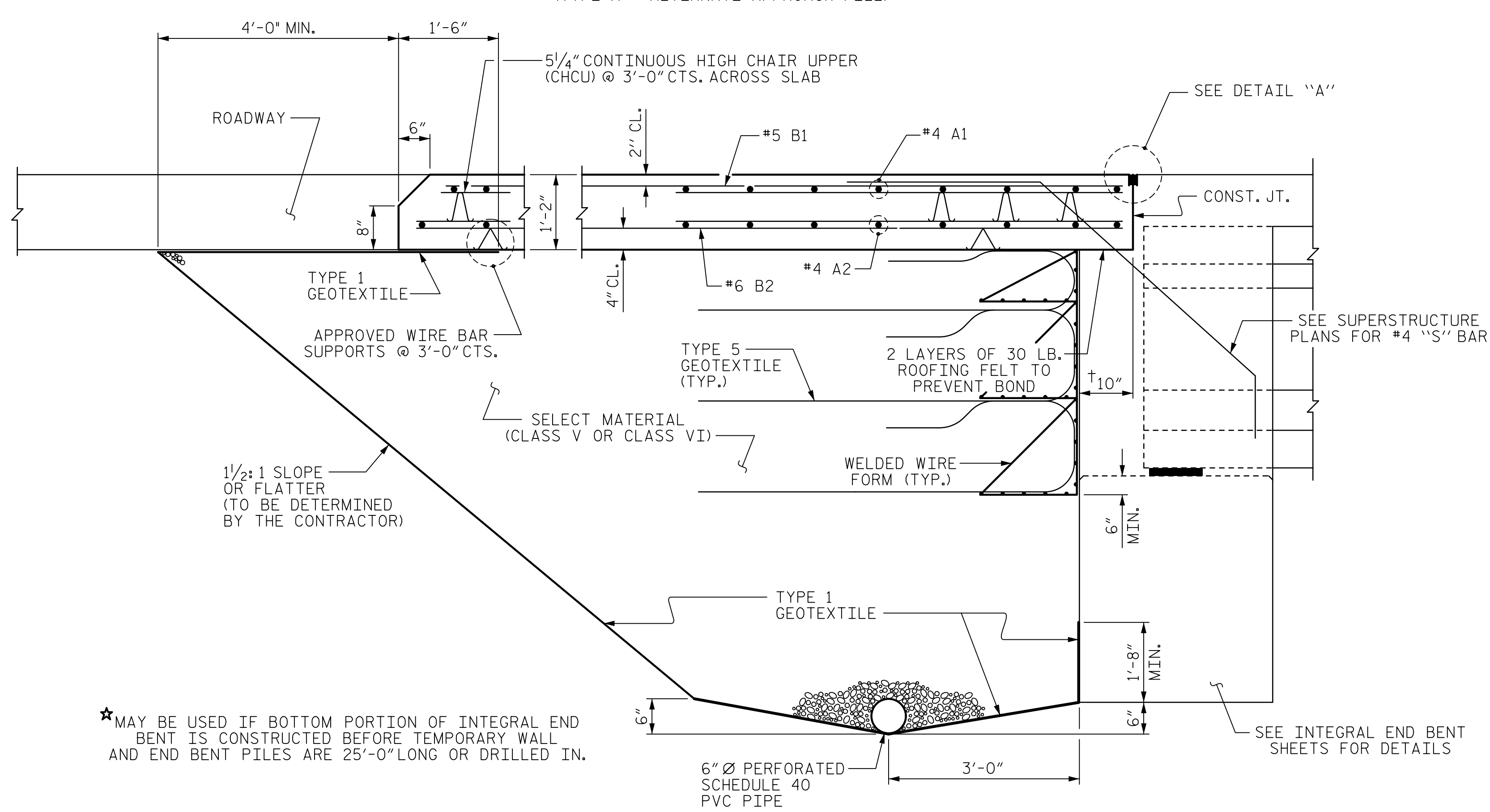
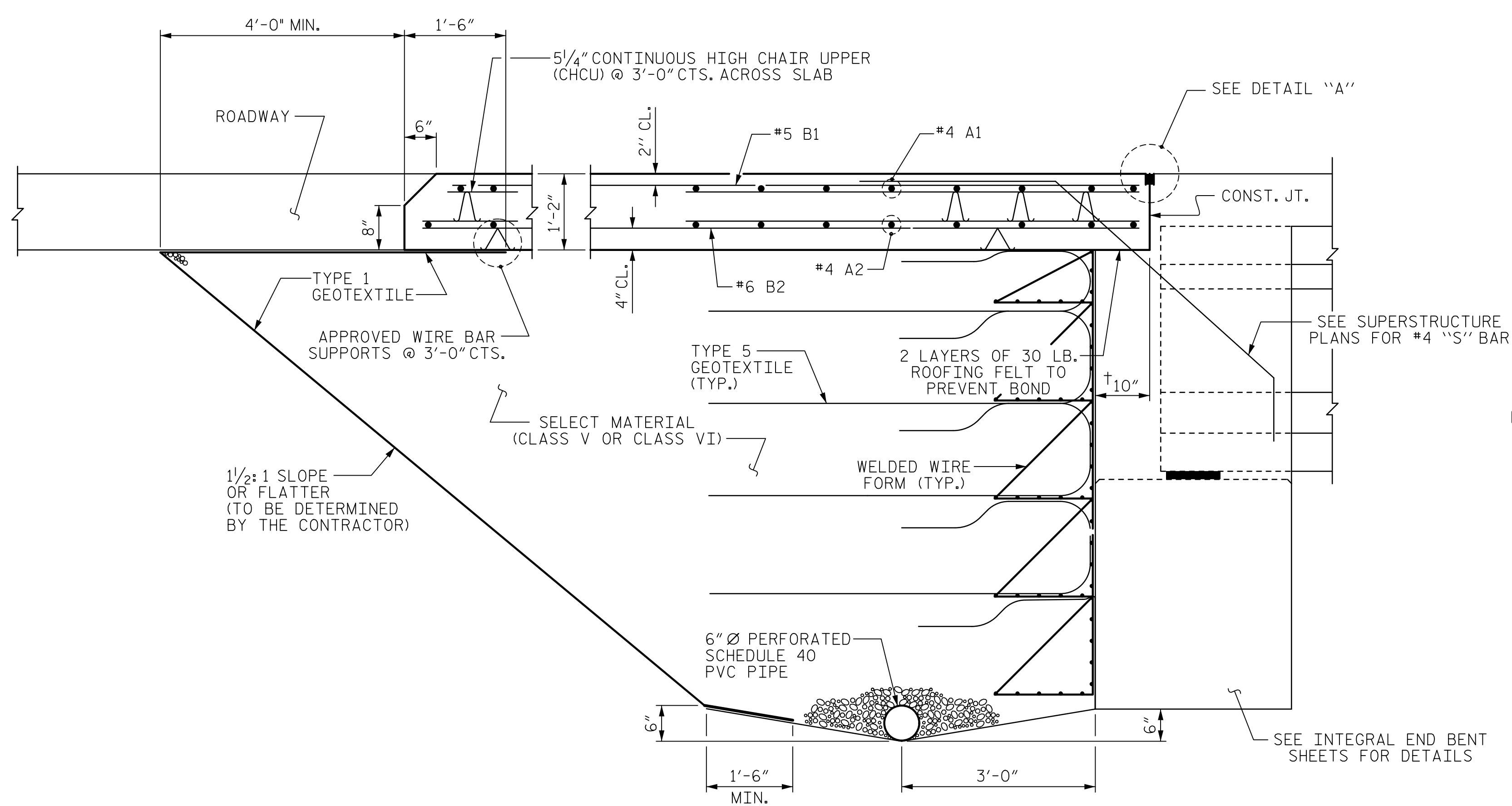


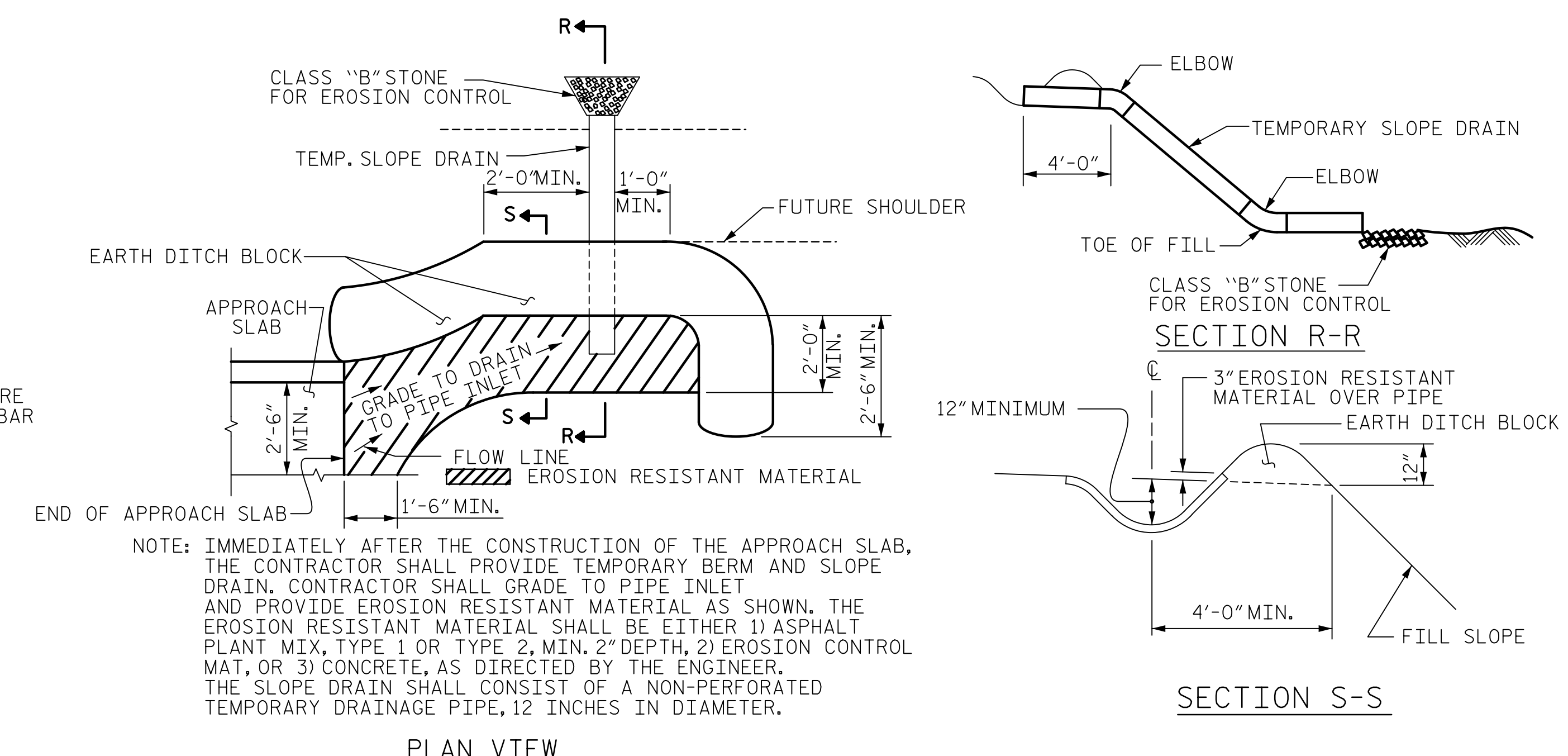
DATE: 6/20/2019
TIME: 6:04:45 PM

USER: \\p001\Users\jmorris\Projects\60557176 - B-5980\900_CAD_GIS\900_CAD\900_MCDOT_TraStructures\04 Drawings\900_65_533_B5980_SKU_AS2.dgn

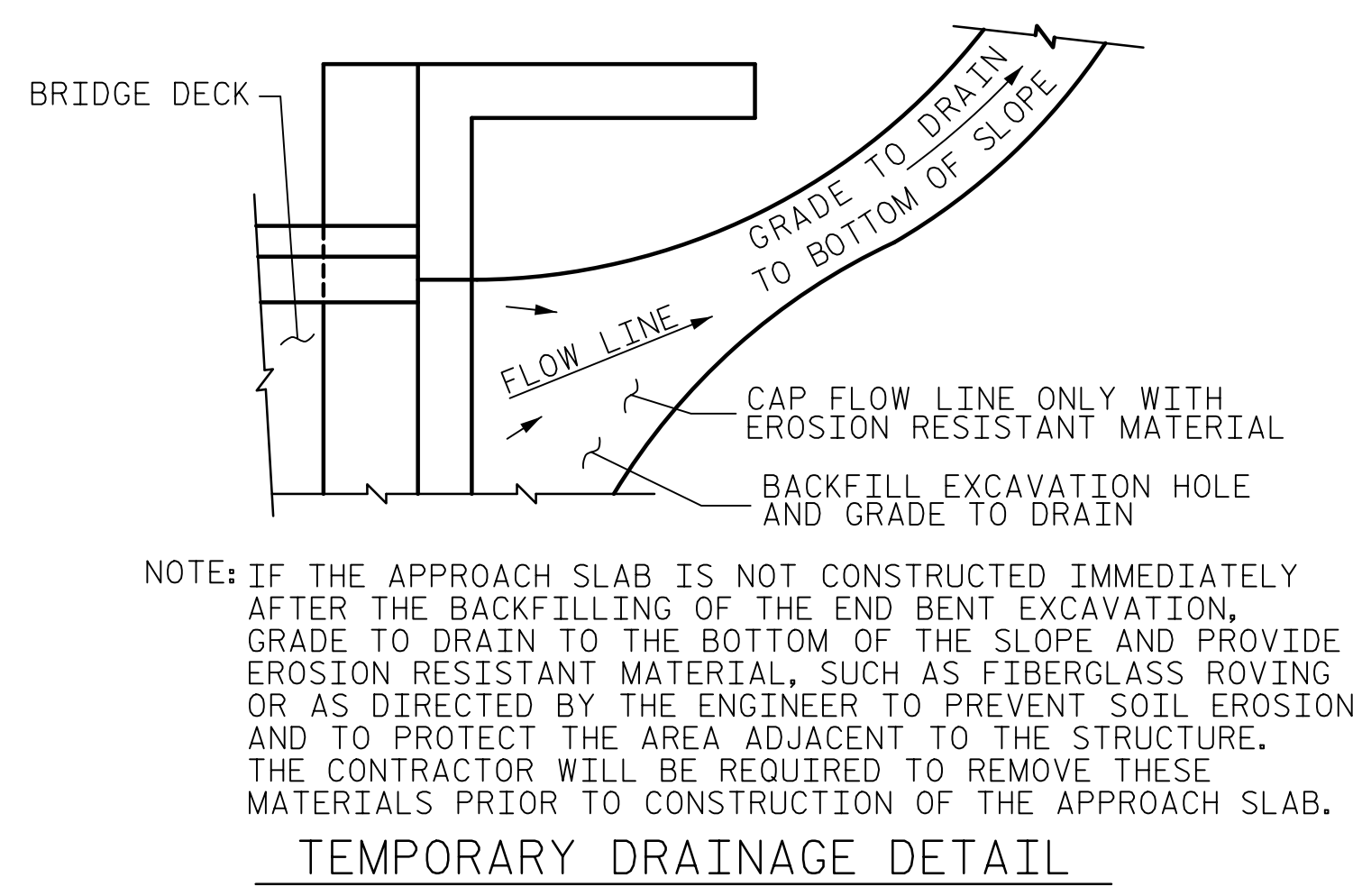


ASSEMBLED BY : T.B. STUMP	DATE : 02/2019
CHECKED BY : J.C. MORRISON	DATE : 02/2019
DRAWN BY : TLA 10/05	REV. 12/21/11 MAA/GM
CHECKED BY : GM 5/06	REV. 6/13 MAA/GM
	REV. 12/17 MAA/THC

SECTION THRU SLAB
(TYPE A - ALTERNATE APPROACH FILL)



TEMPORARY BERM AND SLOPE DRAIN DETAILS
(TO BE USED WHEN SHOULDER BERM GUTTER IS REQUIRED)



PROJECT NO. B-5980
NASH COUNTY
STATION: 42+56.82 -Y1-

SHEET 2 OF 2

AECOM
AECOM TECHNICAL SERVICES OF NC, INC.
701 CORPORATE CENTER DRIVE, SUITE 475
RALEIGH, NC 27607
(919) 854-6200 www.aecom.com
AECOM License No. F-0342

6/21/2019
NORTH CAROLINA PROFESSIONAL SEAL
030474
ENGINEER
JOHN C. MORRISON
A2PDE142C82F4A8

STATE OF NORTH CAROLINA
DEPARTMENT OF TRANSPORTATION
RALEIGH
STANDARD
BRIDGE APPROACH SLAB
FOR INTEGRAL ABUTMENT
WITH FLEXIBLE PAVEMENT

REVISIONS						SHEET NO.
NO.	BY:	DATE:	NO.	BY:	DATE:	S-33
1			3			TOTAL SHEETS
2			4			33

DOCUMENT NOT CONSIDERED FINAL UNLESS ALL SIGNATURES COMPLETED