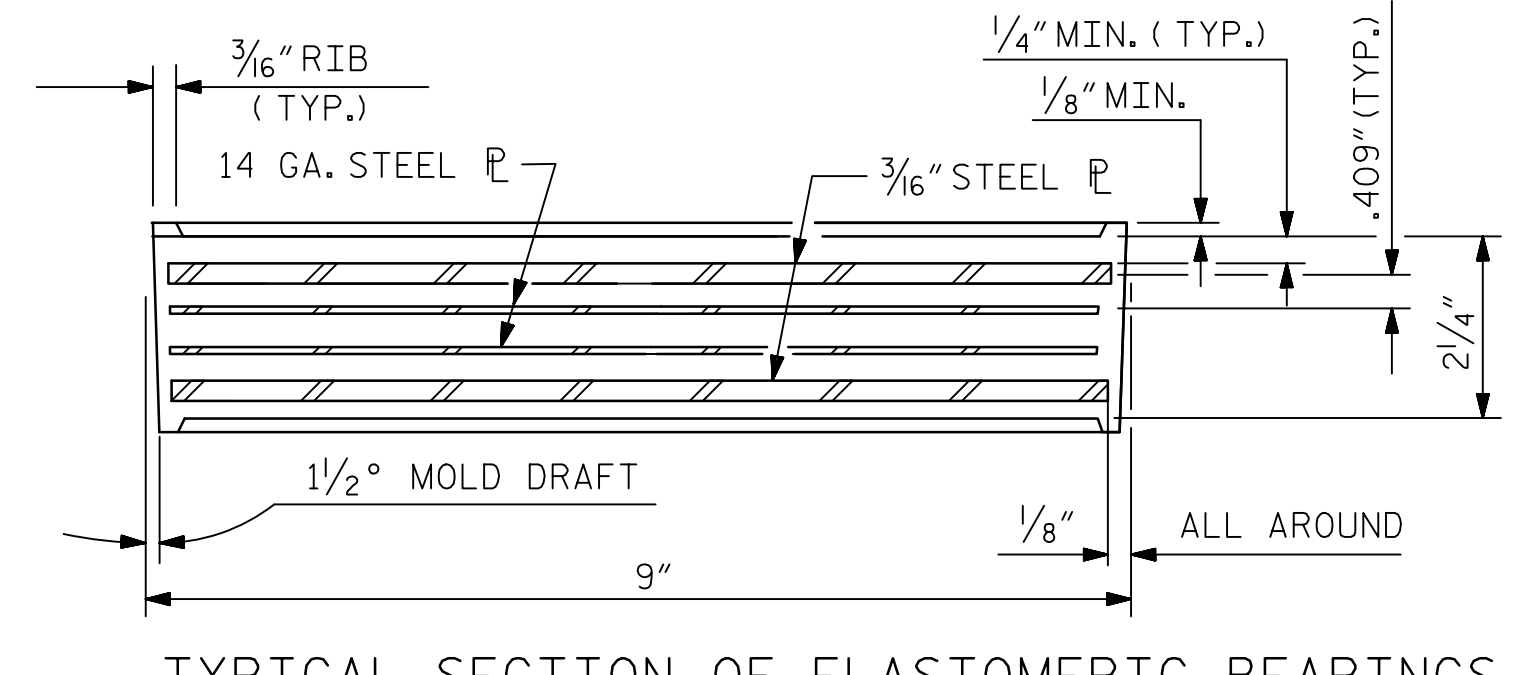
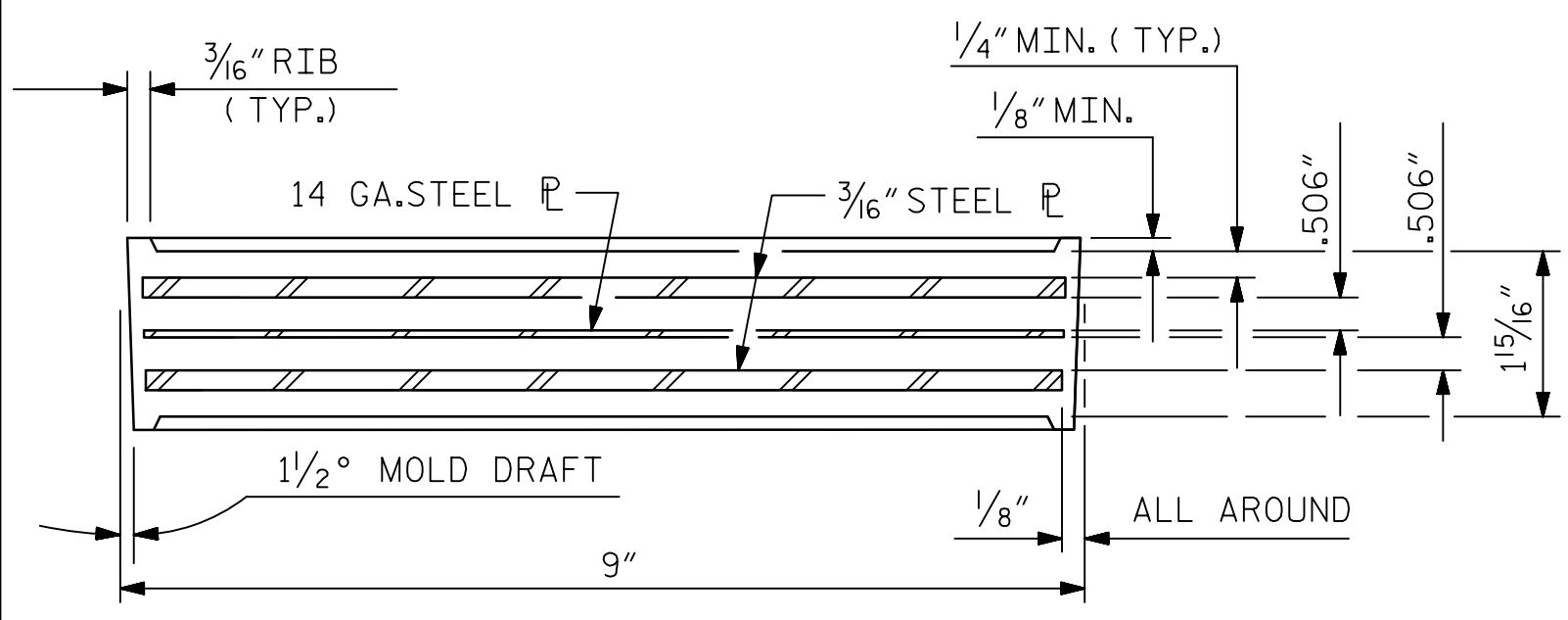
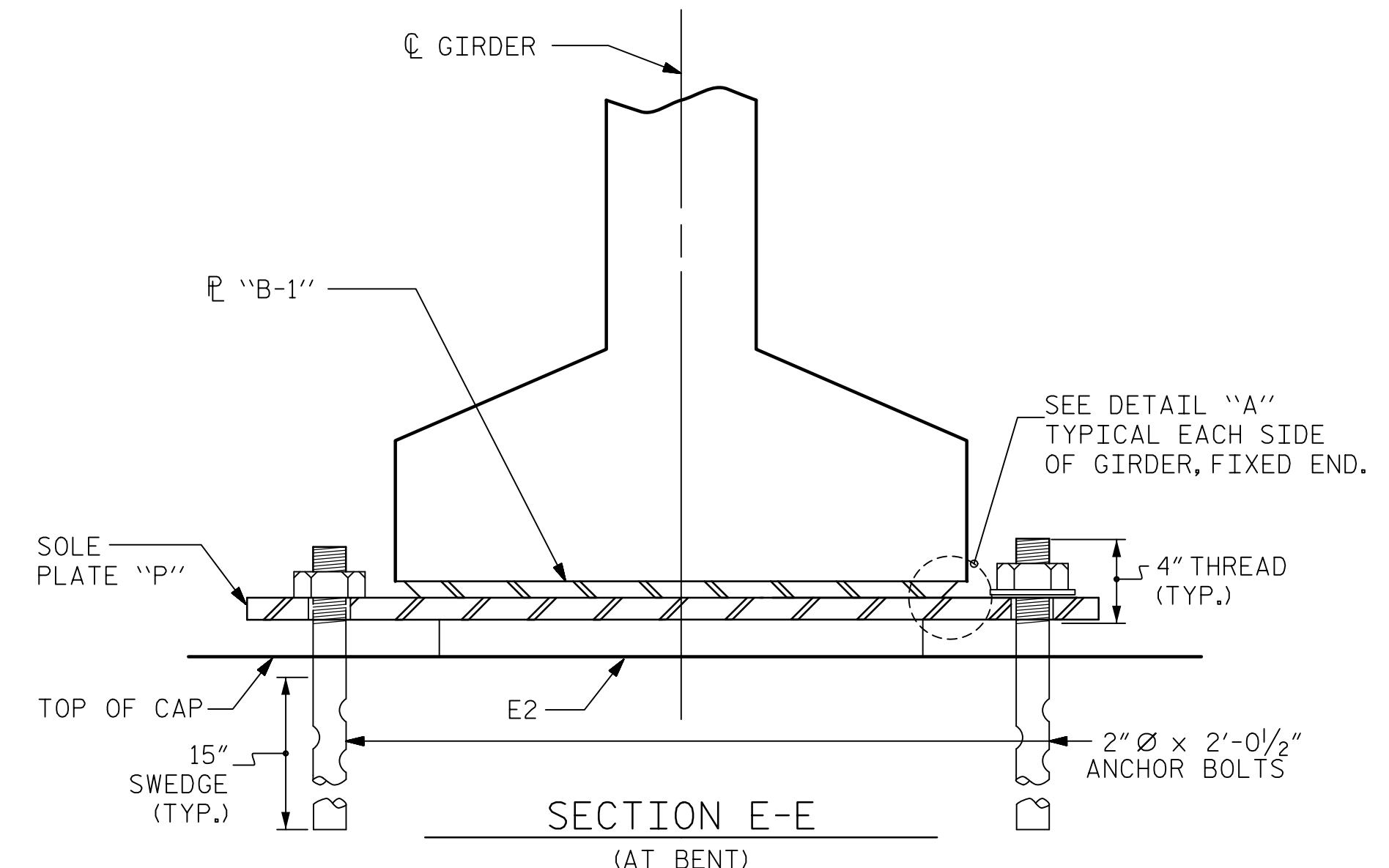
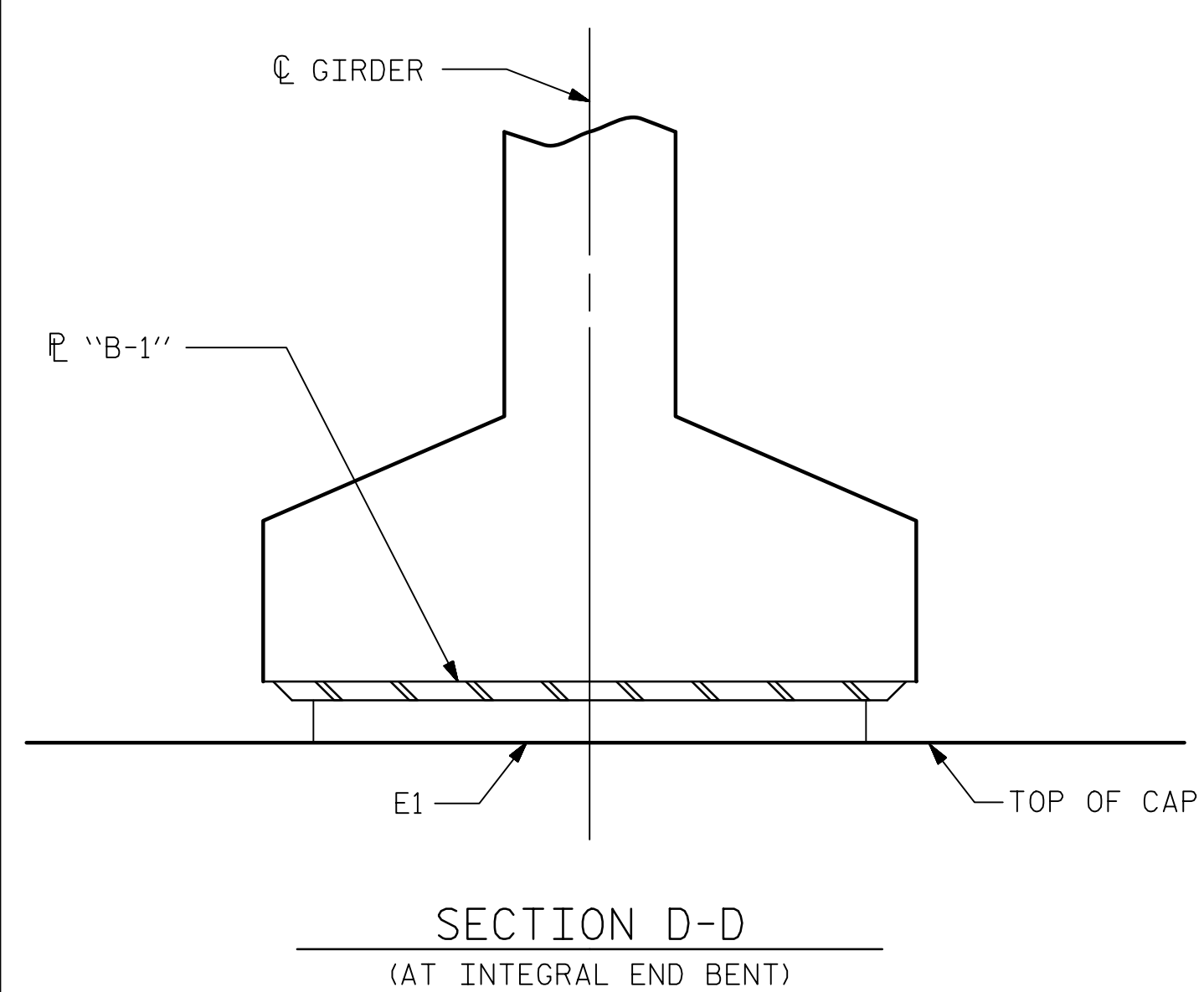


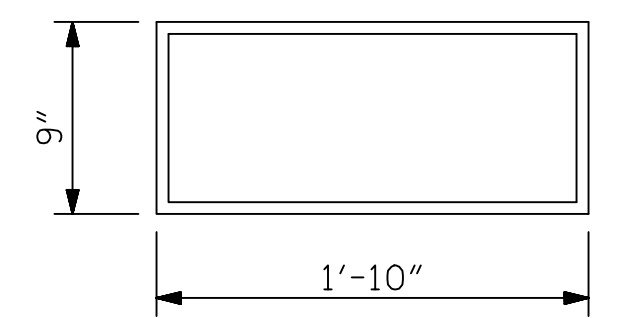
DATE: 6/20/2019
TIME: 6:02:07 PM

USER: \\p001\Users\Projects\60557176 - B-5980\300_CAD_GIS\910_CAD\VO_MCDOT_T\Structures\04 Drawings\400_13_SIT_B5980_SKU_BRG.dgn
DGN: \\p001\Users\Projects\60557176 - B-5980\300_CAD_GIS\910_CAD\VO_MCDOT_T\Structures\04 Drawings\400_13_SIT_B5980_SKU_BRG.dgn



TYPICAL SECTION OF ELASTOMERIC BEARINGS

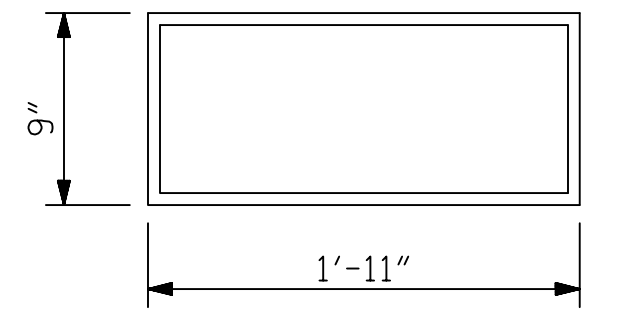
TYPICAL SECTION OF ELASTOMERIC BEARINGS



E1 (10 REQ'D)

PLAN VIEW OF ELASTOMERIC BEARING

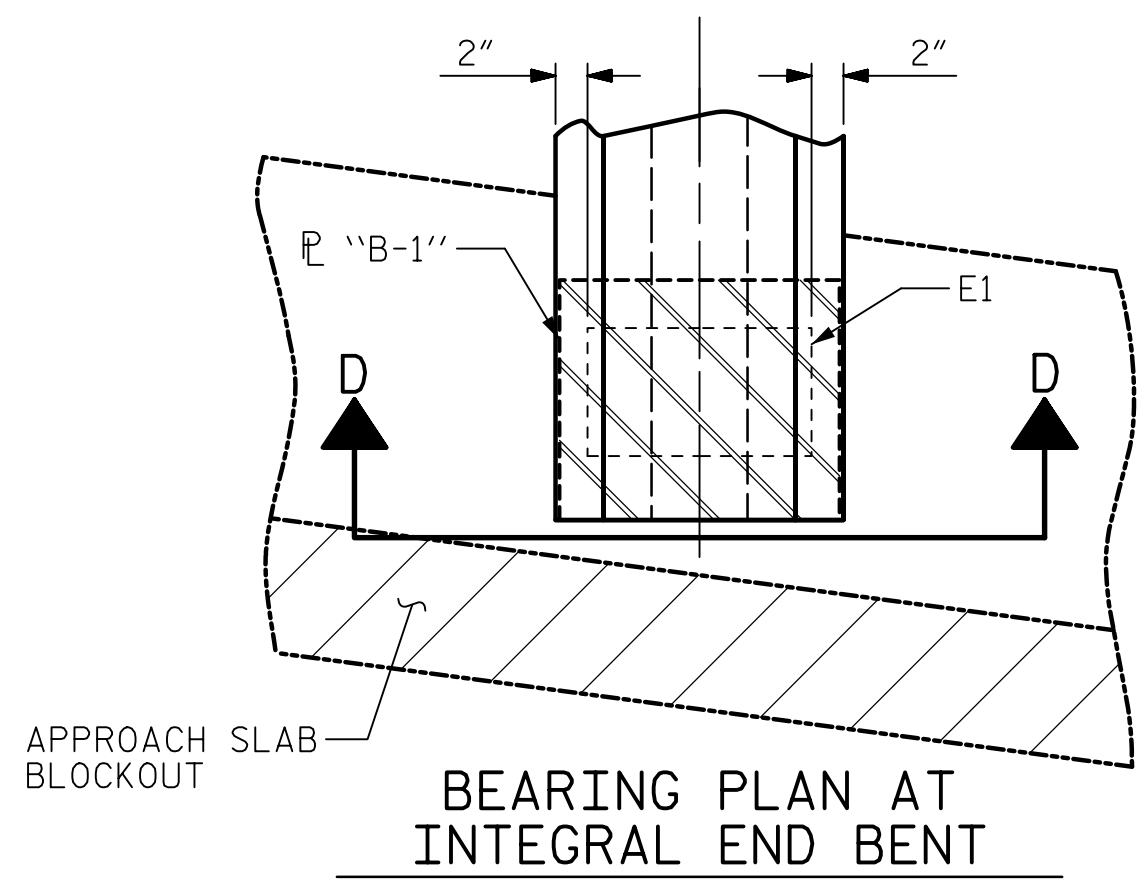
TYPE IV



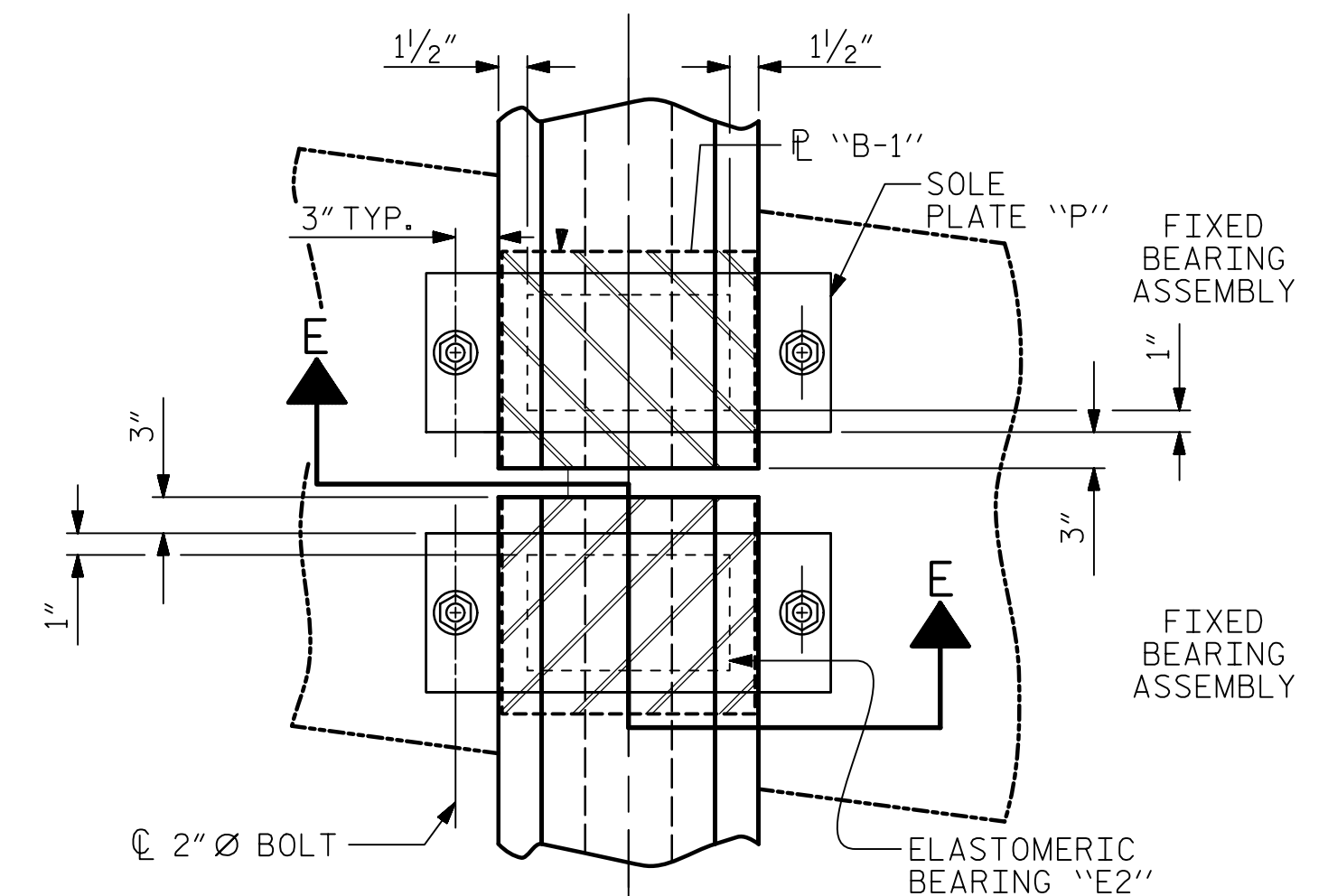
E2 (10 REQ'D)

PLAN VIEW OF ELASTOMERIC BEARING

TYPE V

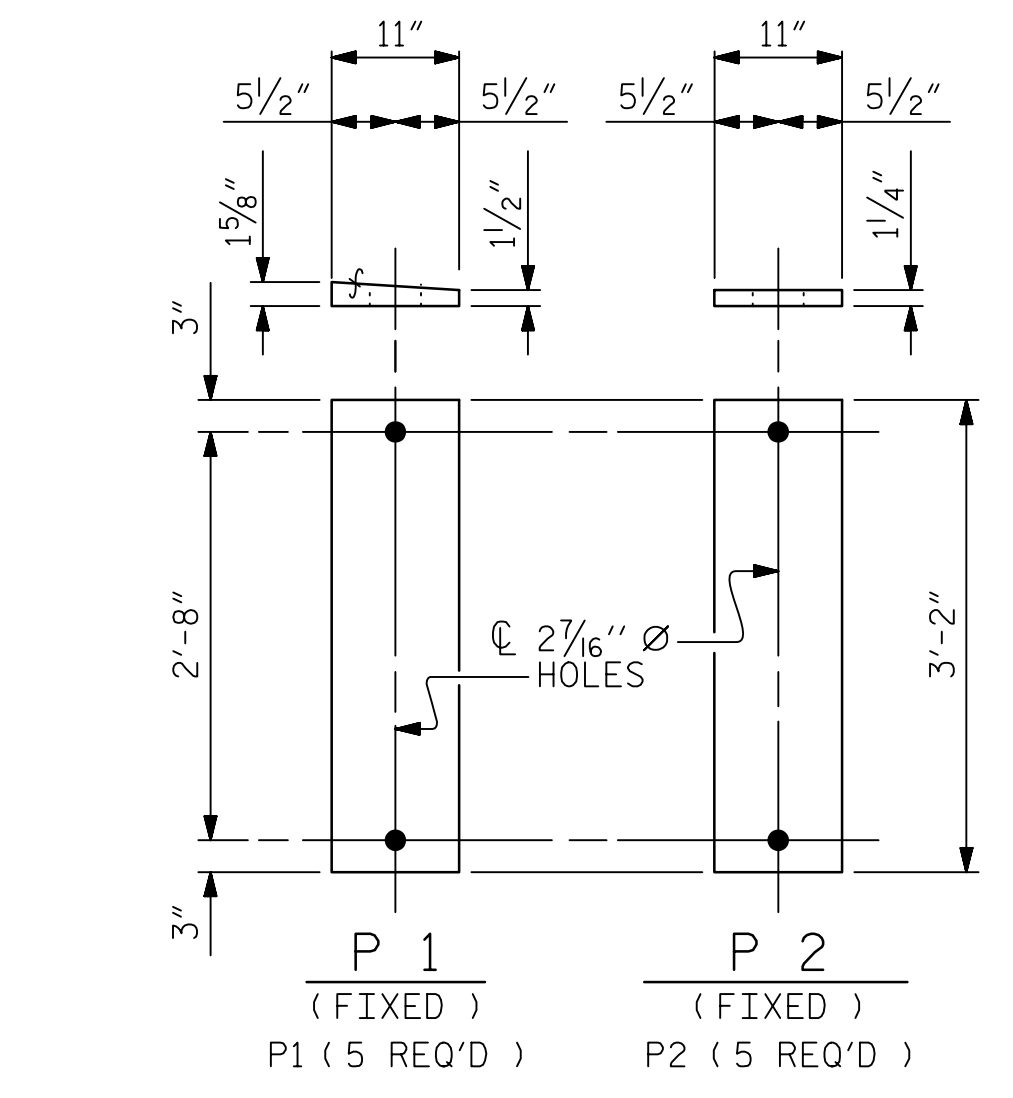
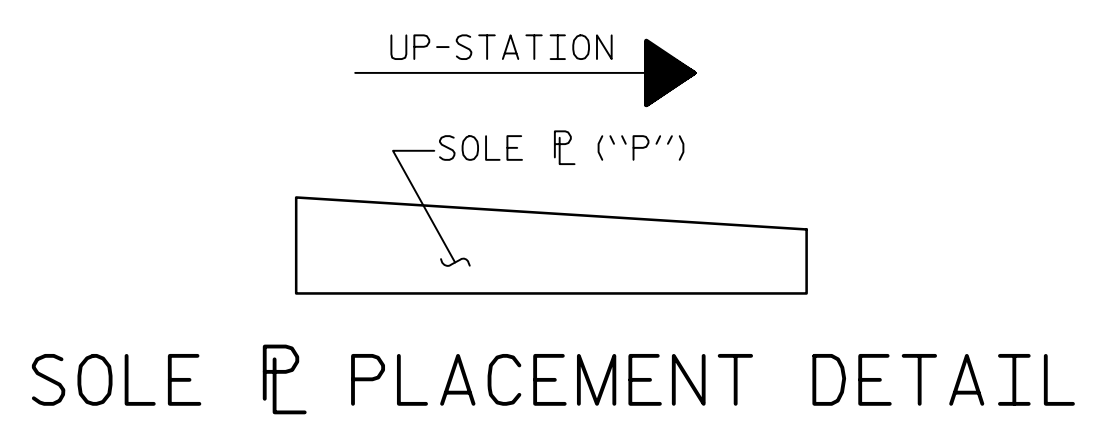


BEARING PLAN AT INTEGRAL END BENT



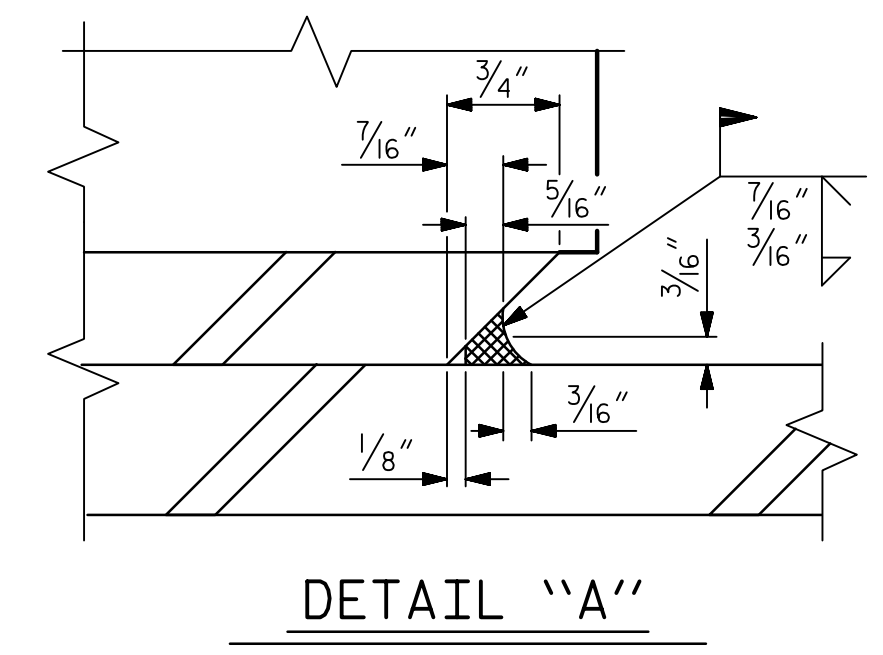
BEARING PLAN AT BENT

(SHOWING CONTINUOUS BENT)



SOLE PLATE DETAILS ("P")

(SEE "FRAMING PLAN" FOR SOLE PLATE "P" LOCATIONS AND PLATE ORIENTATION)



DETAIL "A"

NOTES

AT ALL FIXED POINTS OF SUPPORT, NUTS FOR ANCHOR BOLTS ARE TO BE TIGHTENED FINGER TIGHT AND THEN BACKED OFF 1/2 TURN. THE THREAD OF THE NUT AND BOLT SHALL THEN BE BURRED WITH A SHARP POINTED TOOL.

STEEL SOLE PLATES, ANCHOR BOLTS, NUTS, AND WASHERS SHALL BE GALVANIZED IN ACCORDANCE WITH THE STANDARD SPECIFICATIONS.

PRIOR TO WELDING, GRIND THE GALVANIZED SURFACE OF THE PORTION OF THE EMBEDDED PLATE AND SOLE PLATE THAT ARE TO BE WELDED. AFTER WELDING, DAMAGED GALVANIZED SURFACES SHALL BE REPAIRED IN ACCORDANCE WITH THE STANDARD SPECIFICATIONS.

WHEN WELDING THE SOLE PLATE TO THE EMBEDDED PLATE IN THE GIRDER, USE TEMPERATURE INDICATING WAX PENS, OR OTHER SUITABLE MEANS, TO ENSURE THAT THE TEMPERATURE OF THE SOLE PLATE DOES NOT EXCEED 300°F. TEMPERATURES ABOVE THIS MAY DAMAGE THE ELASTOMER.

SOLE PLATE "P", BOLTS, NUTS, AND WASHERS SHALL BE INCLUDED IN THE PAY ITEM FOR PRESTRESSED CONCRETE GIRDERS.

ANCHOR BOLTS SHALL MEET THE REQUIREMENTS OF ASTM A449. NUTS SHALL MEET THE REQUIREMENTS OF AASHTO M291-DH OR AASHTO M292-2H. WASHERS SHALL MEET THE REQUIREMENTS OF AASHTO M293. SHOP DRAWINGS ARE NOT REQUIRED FOR ANCHOR BOLT, NUTS AND WASHERS. SHOP INSPECTION IS REQUIRED.

ALL SURFACES OF BEARING PLATES SHALL BE SMOOTH AND STRAIGHT.

THE ELASTOMER IN THE STEEL REINFORCED BEARINGS SHALL HAVE A SHEAR MODULUS OF 0.160 KSI, IN ACCORDANCE WITH AASHTO M251.

FOR STEEL REINFORCED ELASTOMERIC BEARINGS, SEE SPECIAL PROVISIONS.

ALL SOLE PLATES SHALL BE AASHTO M270 GRADE 36.

MAXIMUM ALLOWABLE SERVICE LOADS	
D.L.+L.L. (NO IMPACT)	
TYPE IV	225 k
TYPE V	365 k

PROJECT NO. B-5980
NASH COUNTY
 STATION: 42+56.82 -Y1-

AECOM
AECOM TECHNICAL SERVICES OF NC, INC.
 701 CORPORATE CENTER DRIVE, SUITE 475
 RALEIGH, NC 27607
 (919) 854-6200 www.aecom.com
 AECOM License No. F-0342

6/21/2019
 NORTH CAROLINA PROFESSIONAL SEAL 030474
 ENGINEER JOHN C. MORRISON
DocuSign Envelope ID: 833D0891-5EE2-48A8-9C32-98B275F664F4
 John C. Morrison
A2FDE142C82F4A8...

STATE OF NORTH CAROLINA DEPARTMENT OF TRANSPORTATION RALEIGH					
STANDARD ELASTOMERIC BEARING DETAILS PRESTRESSED CONCRETE GIRDER SUPERSTRUCTURE					
REVISIONS					SHEET NO.
NO.	BY:	DATE:	NO.	BY:	DATE:
1			3		
2			4		
					S-17
					TOTAL SHEETS 33

ASSEMBLED BY : T.B. STUMP	DATE : 03/2019
CHECKED BY : J.C. MORRISON	DATE : 03/2019
DRAWN BY : WJH 8/89	REV. 6/13 AAC/MAA
CHECKED BY : CRK 8/89	REV. 1/15 MAA/TMG
	REV. 12/17 MAA/THC

DOCUMENT NOT CONSIDERED FINAL UNLESS ALL SIGNATURES COMPLETED