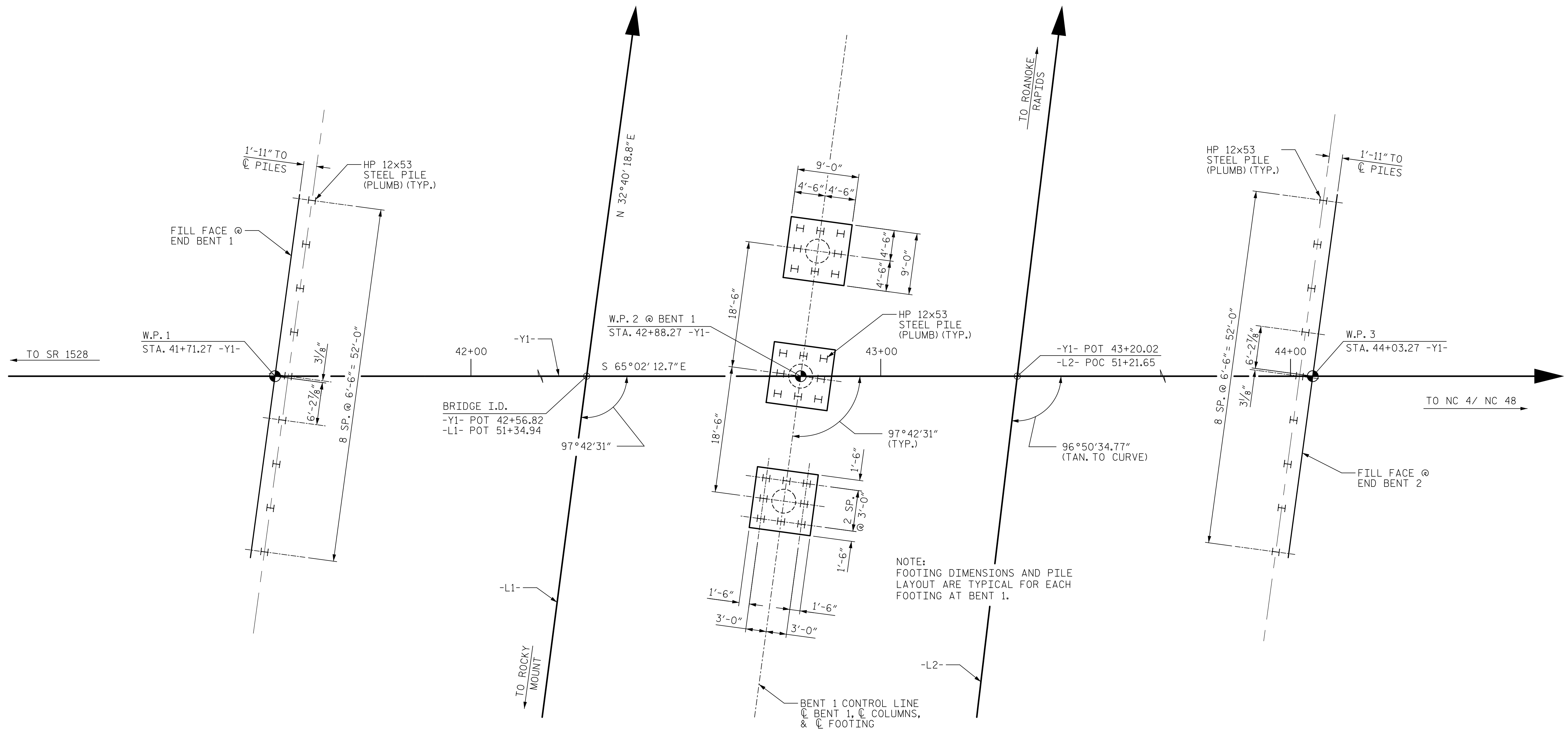


DATE: 6/20/2019
TIME: 6:05:00 PM

USER: stump
DN: /usr/local/Cellar/Projects/60557176 - B-5980/000_CAD_GIS/900_CAD_GIS/900_CAD_GIS/000_03_502_B5980_SKU_FL.dgn



END BENT 1

BENT 1

END BENT 2

FOUNDATION LAYOUT

FOUNDATION NOTES:

- 1) FOR PILES, SEE SECTION 450 OF THE STANDARD SPECIFICATIONS.
- 2) OBSERVE A 6 MONTH WAITING PERIOD AFTER CONSTRUCTING THE EMBANKMENT TO WITHIN 2-FT OF FINISHED GRADE BEFORE BEGINNING END BENT CONSTRUCTION AT END BENTS NO.1 AND 2. FOR BRIDGE WAITING PERIODS, SEE ROADWAY PLANS AND SECTION 235 OF THE STANDARD SPECIFICATIONS.
- 3) PILES AT END BENTS NO.1 AND 2 ARE DESIGNED FOR A FACTORED RESISTANCE OF 120 TONS PER PILE.
- 4) DRIVE PILES AT END BENTS NO.1 AND 2 TO A REQUIRED DRIVING RESISTANCE OF 200 TONS PER PILE.
- 5) PILES AT BENT NO.1 ARE DESIGNED FOR A FACTORED RESISTANCE OF 120 TONS PER PILE.
- 6) DRIVE PILES AT BENT NO.1 TO A REQUIRED DRIVING RESISTANCE OF 195 TONS PER PILE.
- 7) TESTING PILES WITH PDA DURING DRIVING, RESTRIKING, OR REDRIVING MAY BE REQUIRED. THE ENGINEER WILL DETERMINE THE NEED FOR PDA TESTING. FOR PDA TESTING, SEE SECTION 450 OF THE STANDARD SPECIFICATIONS.
- 8) STEEL H-PILE POINTS ARE REQUIRED FOR STEEL H-PILES AT BENT NO.1. FOR STEEL PILE POINTS, SEE SECTION 450 OF THE STANDARD SPECIFICATIONS.

PROJECT NO. B-5980
NASH COUNTY
 STATION: 42+56.82 -Y1-

SHEET 2 OF 3

DRAWN BY : S.G. STREDNAK	DATE : 2/2019
CHECKED BY : J.C. MORRISON	DATE : 2/2019
DESIGNED BY : T.B. STUMP	DATE : 2/2019
DESIGN CHECKED BY : J.C. MORRISON	DATE : 2/2019

DOCUMENT NOT CONSIDERED
 FINAL UNLESS ALL
 SIGNATURES COMPLETED

AECOM
AECOM TECHNICAL SERVICES OF NC, INC.
 701 CORPORATE CENTER DRIVE, SUITE 475
 RALEIGH, NC 27607
 (919) 854-6200 www.aecom.com
 AECOM License No. F-0342

6/21/2019
 NORTH CAROLINA
 PROFESSIONAL
 SEAL
 030474
 ENGINEER
 JOHN C. MORRISON

John C. Morrison
A2FDE142C82F4A8

STATE OF NORTH CAROLINA
 DEPARTMENT OF TRANSPORTATION
 RALEIGH

GENERAL DRAWING
 BRIDGE ON SR 1544
 (HALIFAX RD.) OVER I-95
 BETWEEN SR 1528
 & NC 4 / NC 48

REVISIONS					
NO.	BY:	DATE:	NO.	BY:	DATE:
1			3		
2			4		

SHEET NO.
 S-02
 TOTAL SHEETS
 33