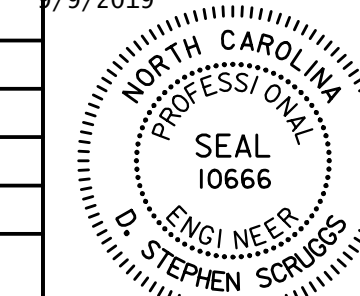


PROJECT REFERENCE NO.	SHEET NO.
B-5980	UC-3B
DESIGNED BY:	
DRAWN BY:	
CHECKED BY:	
APPROVED BY:	
REVISED:	
NORTH CAROLINA DEPARTMENT OF TRANSPORTATION	
UTILITIES ENGINEERING SECTION	
Stephen Scruggs	
PHONE: (919) 707-6690	
FAX: (919) 250-4151	



DOCUMENT NOT CONSIDERED FINAL  
UNLESS ALL SIGNATURES COMPLETED

UTILITY CONSTRUCTION

**MATERIAL:**  
CAST GRAY IRON  
ASTM A48-84, CLASS 25

**FINISH:**  
E-COAT, POWERCRON 698  
4-1.5 MIL THICK, BLACK

**NOTES:**  
1. LID TO BE MANUFACTURED BY FORD METER BOX COMPANY OR APPROVED EQUAL.

3/4" & 1" WATER METER BOX COVER

REVISIONS	APPROVED	STD. NO.
NO DATE DESCRIPTION	-	5.5A
	DATE	REVISION
	5-01-07	-

CITY OF ROCKY MOUNT  
DEPT. OF ENGINEERING

**NOTE:**  
1. VALVE BOX SHALL BE TELESCOPIC WITH SCREW TYPE ADJUSTMENT.  
2. VALVE BOX SHALL BE CAST FROM ASTM A-48, CLASS 30 IRON & SHALL BE FULLY BITUMINOUS COATED FOR DIRECT BURIAL.  
3. VALVE BOX SHALL BE VBX-TE-3B AS MANUFACTURED BY DEWEY BROTHERS, INC. OF GOLDSBORO, NC OR APPROVED EQUAL.  
4. FOR INSTALLATION DETAILS, SEE STD. NO. 5.10.

STANDARD VALVE BOX

REVISIONS	APPROVED	STD. NO.
NO DATE DESCRIPTION	-	5.9
	DATE	REVISION
	04-07-00	-

CITY OF ROCKY MOUNT  
DEPT. OF ENGINEERING

**NOTE:** EXTENSION OF VALVE BOX USING STRAIGHT PIPE SHALL ONLY BE PERMITTED TO A DEPTH OF SIX (6') FEET. FOR DEEPER VALVE INSTALLATIONS, STEM AND OPERATING NUT EXTENSIONS MUST ALSO BE PROVIDED.

CLASS A CONCRETE 6' MIN. THICKNESS

OUTSIDE PAVEMENT INSTALLATION

IN PAVEMENT INSTALLATION

SHOULDER SLAB

VALVE BOX NOT TO CONTACT MAIN NOR VALVE

TAMPED BACKFILL

STABLE WELL COMPACTED SUBGRADE

VALVE BOX INSTALLATION DETAILS

REVISIONS	APPROVED	STD. NO.
NO DATE DESCRIPTION	-	5.10
	DATE	REVISION
	04-07-00	-

CITY OF ROCKY MOUNT  
DEPT. OF ENGINEERING

**ROD REQUIREMENTS**

SIZE OF 45 DEG. BEND	STATIC THRUST IN POUNDS	NUMBER OF RODS REQUIRED
6'	4,328	2
8'	7,694	2
12'	17,312	2
16'	30,779	4
20'	48,091	6
24'	69,252	8

1. ONCE INSTALLED AND TIGHT, THE STEEL RODS AND BOLTS SHALL BE COATED WITH 2 COATS OF BITUMINOUS BASE PAINT.  
2. CONCRETE SHALL NOT CONTACT BOLTS OR ENDS OF MECHANICAL JOINT BENDS.

STANDARD VERTICAL BEND

REVISIONS	APPROVED	STD. NO.
NO DATE DESCRIPTION	-	5.11
	DATE	REVISION
	04-07-00	-

CITY OF ROCKY MOUNT  
DEPT. OF ENGINEERING