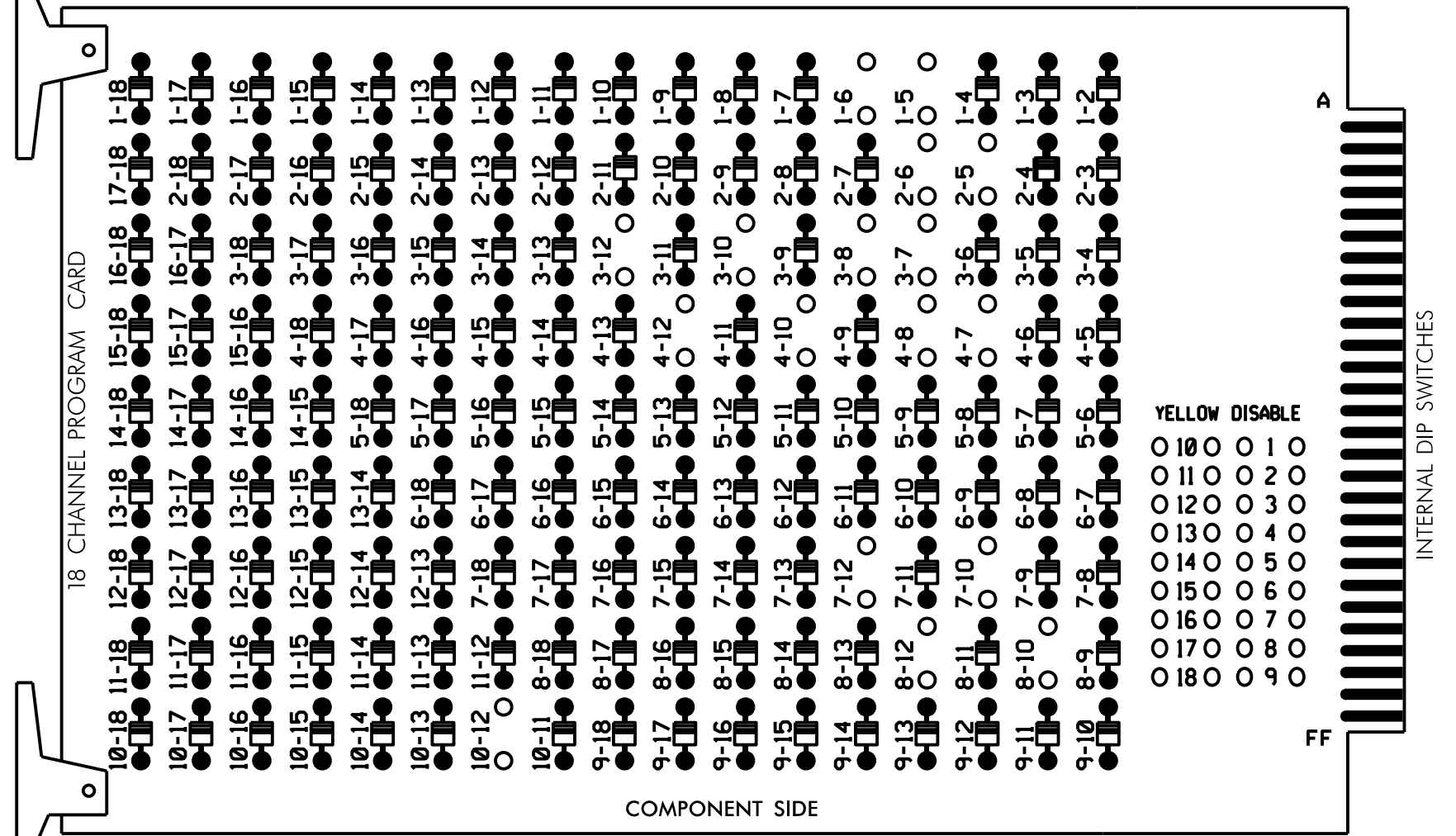


### EDI MODEL 2018ECL-NC CONFLICT MONITOR PROGRAMMING DETAIL

(remove jumpers and set switches as shown)

REMOVE DIODE JUMPERS 1-5, 1-6, 2-5, 2-6, 3-7, 3-8, 3-10, 3-12, 4-7, 4-8, 4-10, 4-12, 7-10, 7-12, 8-10, 8-12, AND 10-12.



REMOVE JUMPERS AS SHOWN

**NOTES:**

- Card is provided with all diode jumpers in place. Removal of any jumper allows its channels to run concurrently.
- Ensure jumpers SEL2-SEL5 and SEL9 are present on the monitor board.
- Ensure that Red Enable is active at all times during normal operation.
- Connect serial cable from conflict monitor to comm. port 1 of 2070 controller. Ensure conflict monitor communicates with 2070.

■ = DENOTES POSITION OF SWITCH

### NOTES

- To prevent "flash-conflict" problems, insert red flash program blocks for all unused vehicle load switches in the output file. The installer shall verify that signal heads flash in accordance with the Signal Plans.
- Program phases 4 and 8 for Dual Entry.
- Enable Simultaneous Gap-Out for all Phases.
- Program phases 2 and 6 for Variable Initial and Gap Reduction.
- Program phases 2 and 6 for Startup In Green.
- Program phases 2 and 6 for Yellow Flash, and overlap 2 as Wag Overlaps.
- The cabinet and controller are part of the Rocky Mount Signal System.

### EQUIPMENT INFORMATION

CONTROLLER.....2070  
 CABINET.....332 W/ AUX  
 SOFTWARE.....ECONOLITE OASIS  
 CABINET MOUNT.....BASE  
 OUTPUT FILE POSITIONS...18 WITH AUX. OUTPUT FILE  
 LOAD SWITCHES USED.....S1,S2,S4,S5,S7,S8,S10,S11,AUX S2,AUX S5  
 PHASES USED.....1,2,3,4,5,6,7,8  
 OVERLAP "A".....NOT USED  
 OVERLAP "B".....3+4  
 OVERLAP "C".....NOT USED  
 OVERLAP "D".....7+8

### SIGNAL HEAD HOOK-UP CHART

| LOAD SWITCH NO.       | S1  | S2    | S3    | S4 | S5    | S6    | S7 | S8 | S9    | S10 | S11 | S12   | AUX S1 | AUX S2 | AUX S3 | AUX S4 | AUX S5 | AUX S6 |    |
|-----------------------|-----|-------|-------|----|-------|-------|----|----|-------|-----|-----|-------|--------|--------|--------|--------|--------|--------|----|
| CMU CHANNEL NO.       | 1   | 2     | 13    | 3  | 4     | 14    | 5  | 6  | 15    | 7   | 8   | 16    | 9      | 10     | 17     | 11     | 12     | 18     |    |
| PHASE                 | 1   | 2     | 2 PED | 3  | 4     | 4 PED | 5  | 6  | 6 PED | 7   | 8   | 8 PED | OLA    | OLB    | SPARE  | OLC    | OLD    | SPARE  |    |
| SIGNAL HEAD NO.       | 11  | 21,22 | NU    | 31 | 41,42 | NU    | 42 | 51 | 61,62 | NU  | 71  | 81,82 | NU     | NU     | 31     | NU     | NU     | 71     | NU |
| RED                   |     | 128   |       |    | 101   |       |    |    | 134   |     |     | 107   |        |        |        |        |        |        |    |
| YELLOW                |     | 129   |       | *  | 102   |       |    |    | 135   |     | *   | 108   |        |        |        |        |        |        |    |
| GREEN                 |     | 130   |       |    | 103   |       |    |    | 136   |     |     | 109   |        |        |        |        |        |        |    |
| RED ARROW             | 125 |       |       |    |       |       |    |    | 131   |     |     |       |        |        | A124   |        |        | A101   |    |
| YELLOW ARROW          | 126 |       |       |    |       |       |    |    | 132   | 132 |     |       |        |        | A125   |        |        | A102   |    |
| FLASHING YELLOW ARROW |     |       |       |    |       |       |    |    |       |     |     |       |        |        | A126   |        |        | A103   |    |
| GREEN ARROW           | 127 |       |       |    | 118   |       |    |    | 133   | 133 |     | 124   |        |        |        |        |        |        |    |

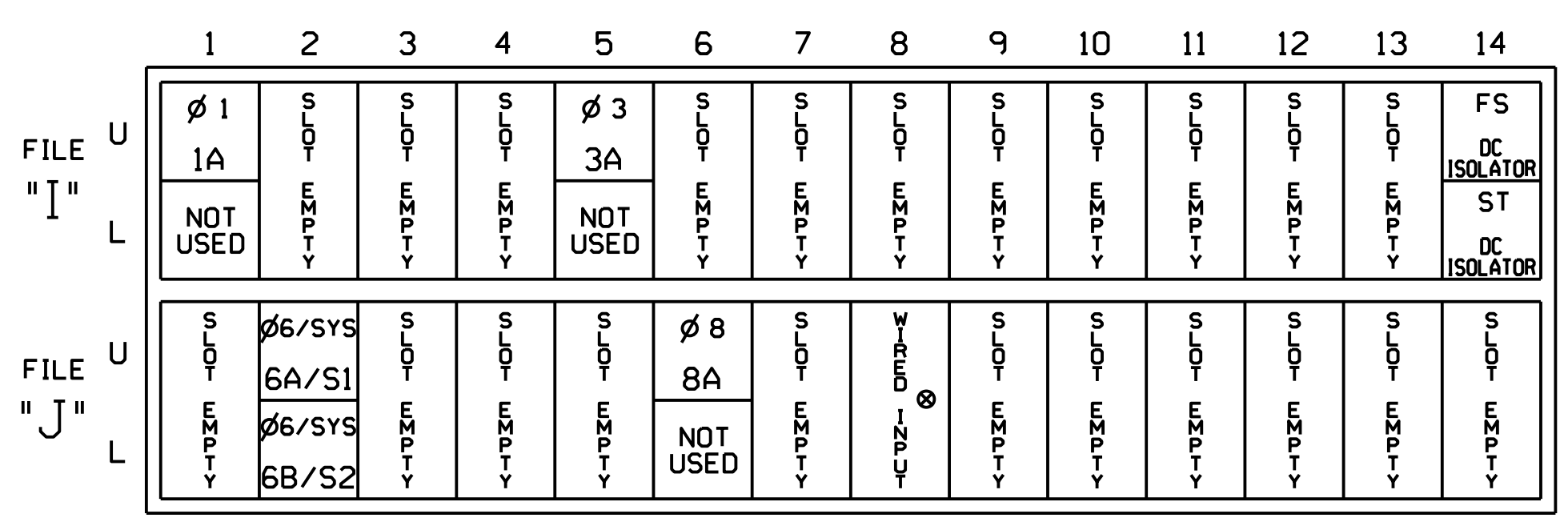
NU = Not Used

\* Denotes install load resistor. See load resistor installation detail this sheet.

\* See pictorial of head wiring in detail this sheet.

### INPUT FILE POSITION LAYOUT

(front view)



EX.: 1A, 2A, ETC. = LOOP NO.'S

FS = FLASH SENSE  
 ST = STOP TIME

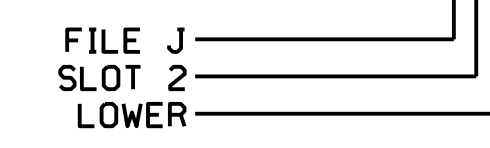
⊗ Wired Input - Do not populate slot with detector card

### INPUT FILE CONNECTION & PROGRAMMING CHART

| LOOP NO. | LOOP TERMINAL | INPUT FILE POS. | PIN NO. | INPUT ASSIGNMENT NO. | DETECTOR NO. | NEMA PHASE | CALL | EXTEND | FULL TIME DELAY | STRETCH TIME | DELAY TIME |
|----------|---------------|-----------------|---------|----------------------|--------------|------------|------|--------|-----------------|--------------|------------|
| 1A       | TB2-1,2       | 11U             | 56      | 18                   | 1            | 1          | Y    | Y      |                 |              |            |
| 3A'      | TB4-5,6       | 15U             | 58      | 20                   | 3            | 3          | Y    | Y      |                 |              | 15         |
|          |               | J8U             | 50      | 12                   | 28           | 8          | Y    | Y      |                 |              | 3          |
| 6A/S1    | TB3-5,6       | J2U             | 40      | 2                    | 6            | 6/SYS      | Y    | Y      |                 |              |            |
| 6B/S2    | TB3-7,8       | J2L             | 44      | 6                    | 16           | 6/SYS      | Y    | Y      |                 |              |            |
| 8A       | TB5-9,10      | J6U             | 42      | 4                    | 8            | 8          | Y    | Y      |                 |              | 10         |

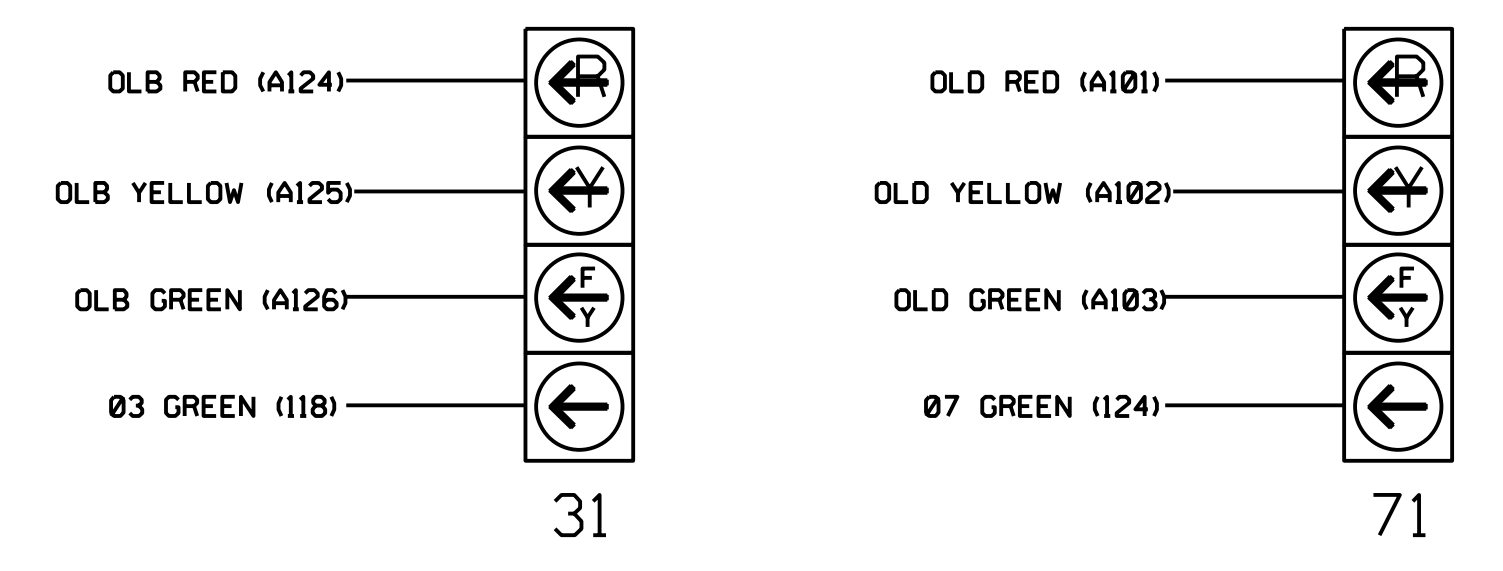
\*Add jumper from 15-W to J8-W, on rear of input file.

INPUT FILE POSITION LEGEND: J2L



### FYA SIGNAL WIRING DETAIL

(wire signal heads as shown)

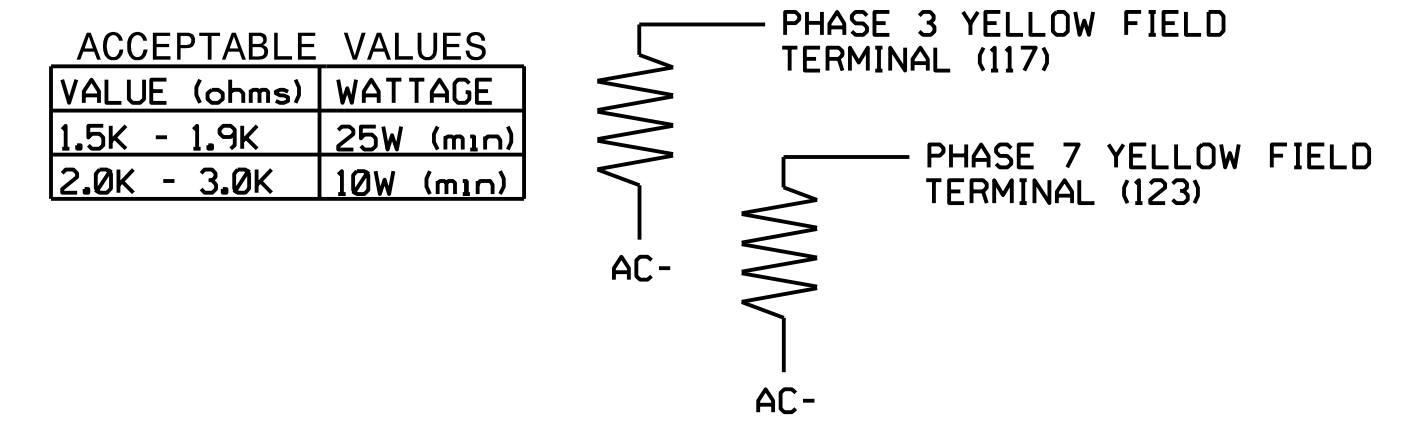


**NOTE**

1. The sequence display for signal heads 31, and 71 requires special logic programming. See sheet 2 for programming instructions.

### LOAD RESISTORS INSTALLATION DETAIL

(install resistors as shown below)



### SPECIAL DETECTOR NOTE

For zones 2A/S3, 4A, 5A, 5B, and 7A install a video detection system for vehicle detection. Perform installation according to manufacturer's directions and NCDOT engineer-approved mounting locations to accomplish the detection schemes shown on the Signal Design Plans.

THIS ELECTRICAL DETAIL IS FOR THE SIGNAL DESIGN: 04-0111T2  
 DESIGNED: June 2019  
 SEALED: 3/17/2020  
 REVISED: N/A

Temporary Design 2 (TMP Phase II)  
 Electrical Detail Sheet 1 of 2

DOCUMENT NOT CONSIDERED FINAL UNLESS ALL SIGNATURES COMPLETED

|   |   |   |                                  |
|---|---|---|----------------------------------|
| ELECTRICAL AND PROGRAMMING DETAILS FOR:<br>Prepared for the Offices of:<br><br>750 N. Greenfield Pkwy, Carrboro, NC 27529 | <b>I-95 Ramps and NC 4</b><br>at<br><b>NC 4 / NC 48</b>   |   | <br>James O. Deaton<br>3/17/2020 |
|   | Division 4<br>PLAN DATE: June 2019<br>PREPARED BY: A. Raviipati                                   | Nash County<br>Rocky Mount<br>REVIEWED BY: J. O. Deaton<br>REVIEWED BY: M. W. Valch |                                  |
|   | REVISIONS<br>INIT. DATE   | REVISIONS<br>INIT. DATE   |                                  |
|   | DocuSigned by:<br>James O. Deaton<br>40FFRAC430BD46F<br>3/17/2020<br>SIG. INVENTORY NO. 04-0111T2 |   |                                  |

**AECOM**  
 NC Firm License No.: F-0342  
 701 Corporate Center Drive  
 Suite 475 Raleigh, NC 27607  
 Phone: 919-854-6200