

5/14/99
3:57:28 PM Design\B5980.rvt.ec-10.dgn
R:\Enviromental\B5980.rvt.ec-10.dgn

-RPD_DET-
PI Sta 10+49.32 PI Sta 12+25.41 PI Sta 13+78.43
 $\Delta = 37^{\circ}19'55.3"$ (LT) $\Delta = 52^{\circ}52'48.3"$ (RT) $\Delta = 31^{\circ}43'58.4"$ (LT)
 $D = 39^{\circ}14'37.3"$ $D = 21^{\circ}52'07.0"$ $D = 39^{\circ}14'37.3"$
 $L = 95.13'$ $L = 241.81'$ $L = 80.86'$
 $T = 49.32'$ $T = 130.29'$ $T = 41.50'$
 $R = 146.00'$ $R = 262.00'$ $R = 146.00'$

-RPC_DET-
PI Sta 11+43.39
 $\Delta = 58^{\circ}53'29.7"$ (RT)
 $D = 22^{\circ}33'26.6"$
 $L = 261.07'$
 $T = 143.39'$
 $R = 254.00'$

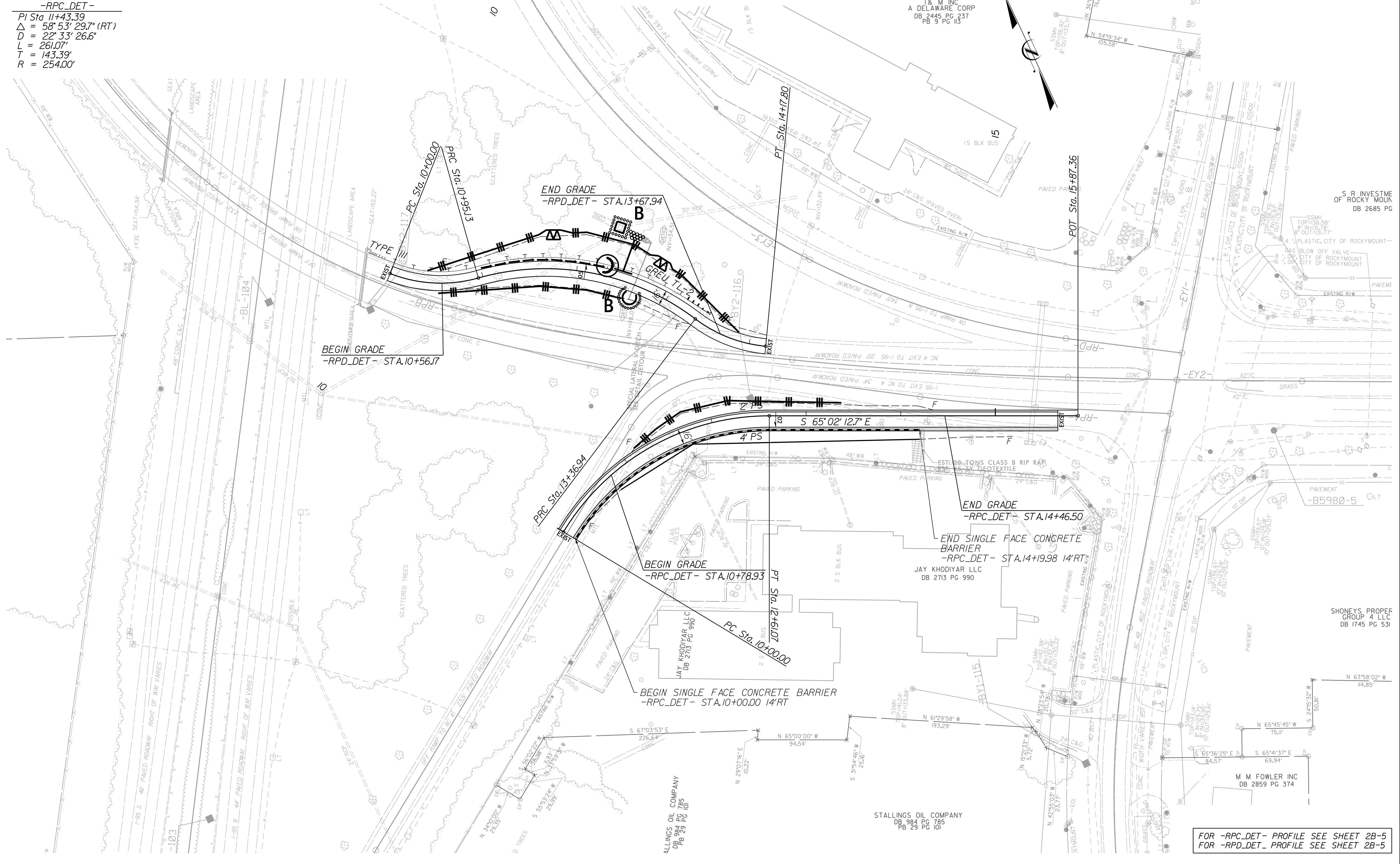
-RPC_DET-
-RPD_DET-

DETOUR

PROJECT REFERENCE NO.	SHEET NO.
B-5980	EC-10/CONST2B-4
RW SHEET NO.	

Prepared in the Office of: **AECOM**
NC FIRM LICENSE No. F-0342
701 Corporate Center Blvd, Suite 415
Raleigh, NC 27603
(919) 854-6200 • (919) 854-6259 (FAX)

50 25 0 50 100
PLANS



FOR -RPC_DET- PROFILE SEE SHEET 2B-5
FOR -RPD_DET- PROFILE SEE SHEET 2B-5