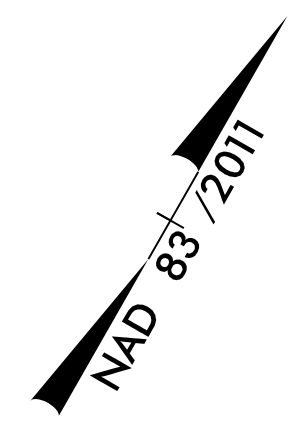
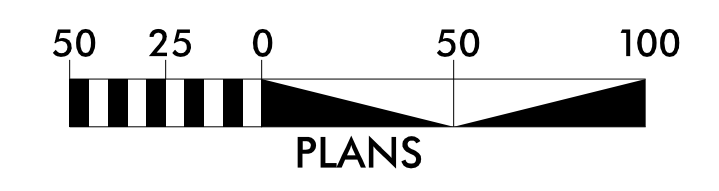
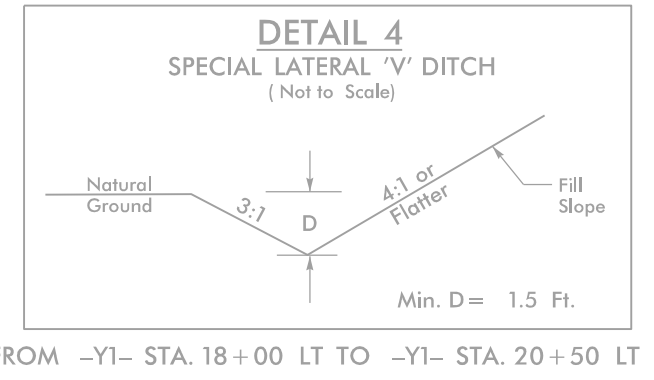


PROJECT REFERENCE NO.	SHEET NO.
B-5980	EC-07/CONST.7
R/W SHEET NO.	

Prepared in the Office of: **AECOM**  
 NC FIRM LICENSE No.F-0342  
 701 Corporate Center Drive, Suite 475  
 Raleigh, NC 27607  
 (919) 854-6200 • (919) 854-6259(FAX)



-Y1-  
 PI Sta. 20+95.40  
 $\Delta = 3^{\circ} 51' 37.8''$  (LT)  
 $D = 4' 35'' 01.2''$   
 $L = 695.09'$   
 $T = 356.79'$   
 $R = 1,250.00'$   
 $e = 8\%$   
 RUNOFF = 216'



CLEARING AND GRUBBING  
 EROSION CONTROL FOR  
 CONSTRUCTION SHEET 7

NOTE:  
 PLACE TEMPORARY ROCK SEDIMENT DAMS TYPE - B  
 AND TEMPORARY ROCK SILT CHECKS TYPE - A AT  
 DRAINAGE OUTLETS.

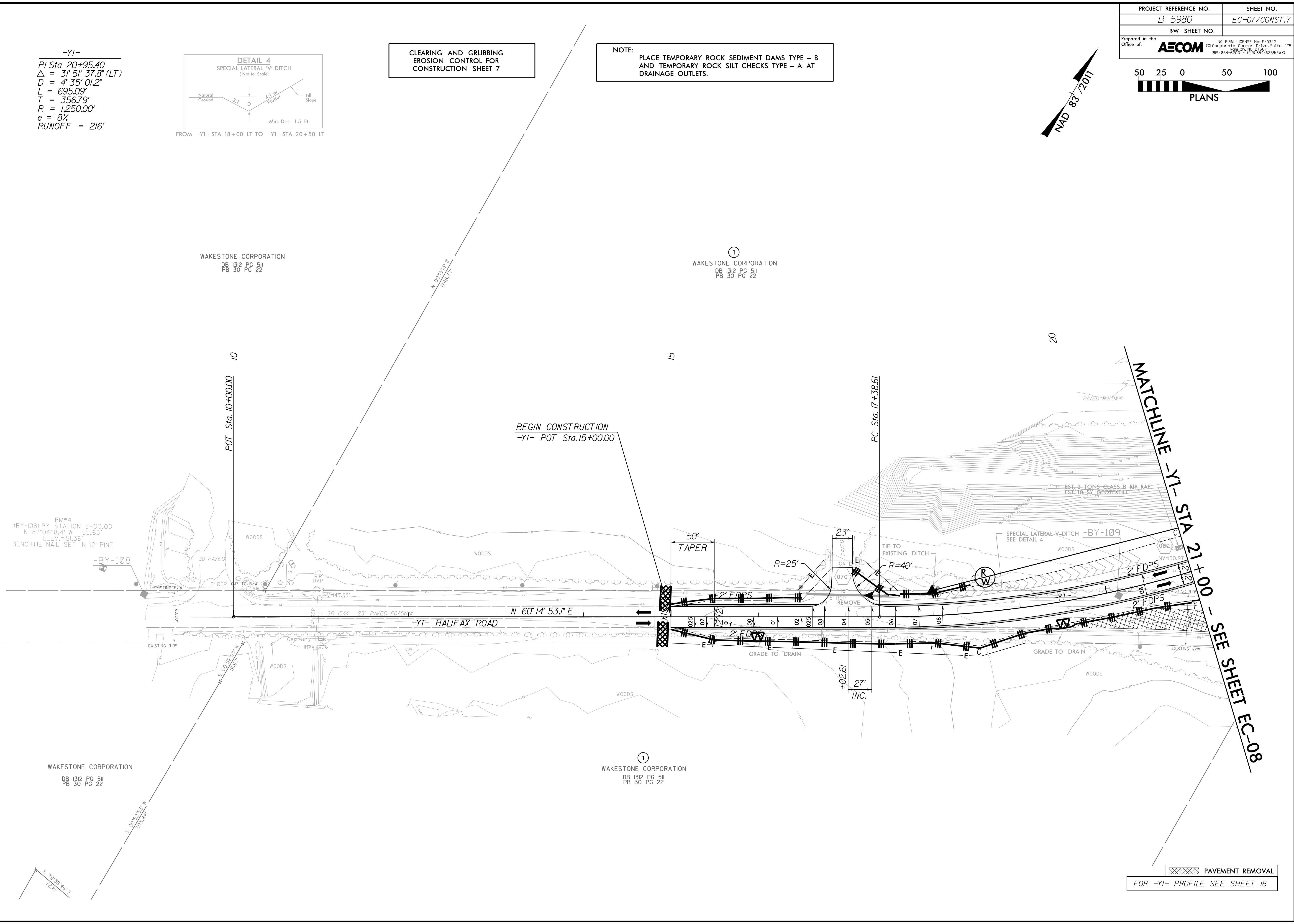
WAKESTONE CORPORATION  
 DB 1312 PG 511  
 PB 30 PG 22

①  
 WAKESTONE CORPORATION  
 DB 1312 PG 511  
 PB 30 PG 22

BM#4  
 (BY-108) BY STATION 5+00.00  
 N 87°04'18.4" W 55.65'  
 ELEV.=151.38'  
 BENCHTIE NAIL SET IN 12" PINE

WAKESTONE CORPORATION  
 DB 1312 PG 511  
 PB 30 PG 22

①  
 WAKESTONE CORPORATION  
 DB 1312 PG 511  
 PB 30 PG 22



PAVEMENT REMOVAL  
 FOR -Y1- PROFILE SEE SHEET 16

MATCHLINE -Y1- STA 21+00 - SEE SHEET EC-08

3:57:23 PM R:\Enviromental\design\B5980\_reu\_EC-07.dgn 5/14/99