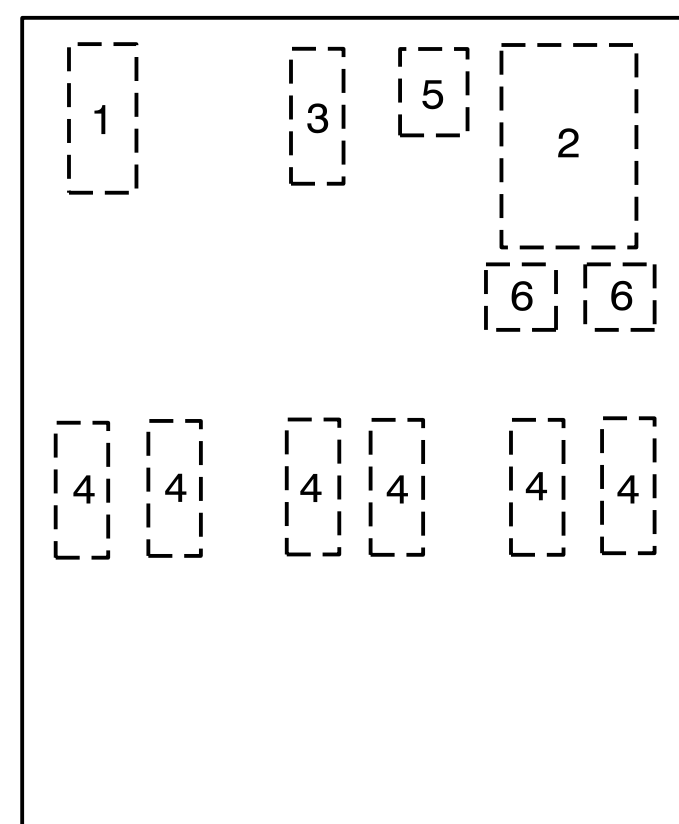
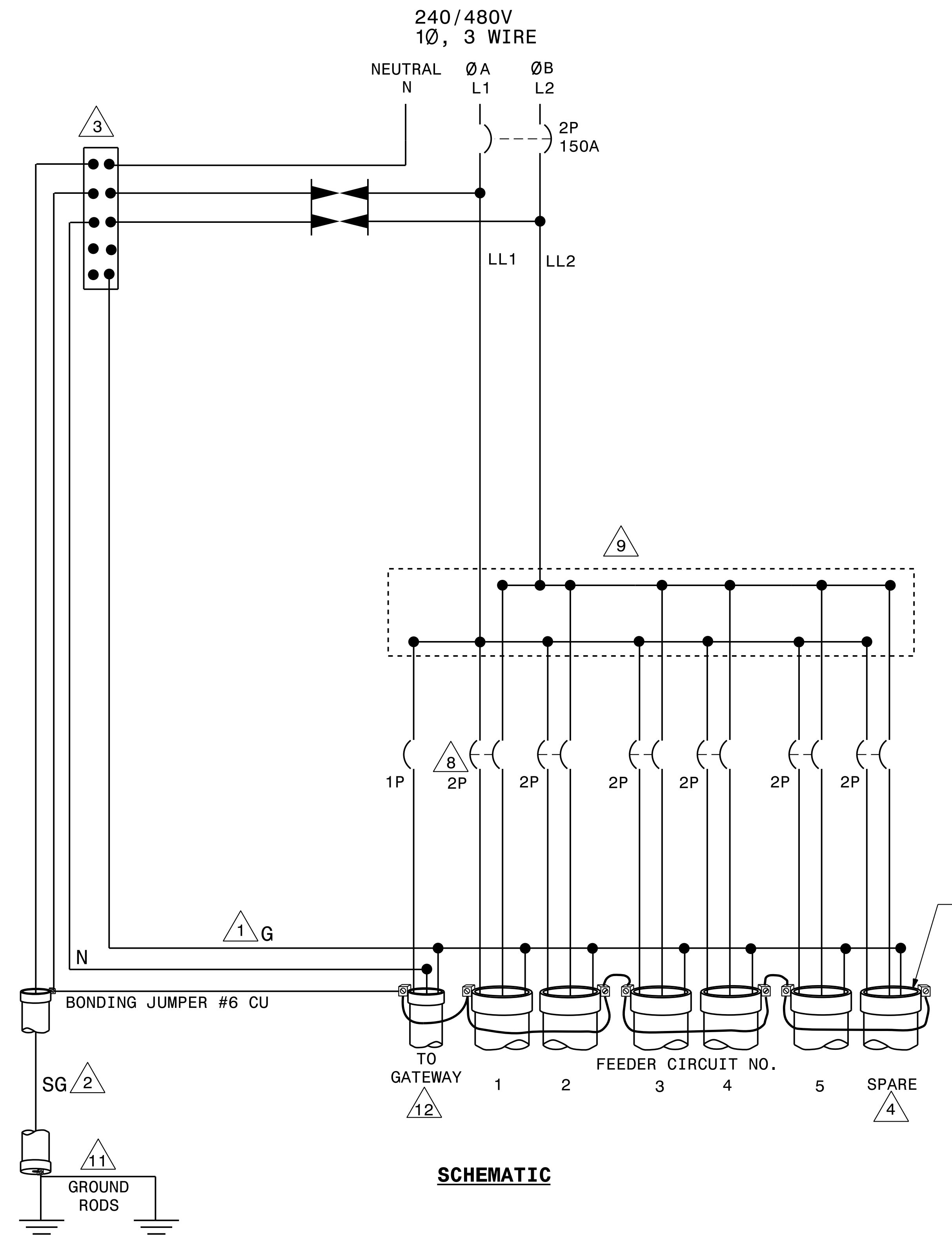


DOCUMENT NOT CONSIDERED FINAL UNLESS ALL SIGNATURES COMPLETED



Designed by: Joseph Kluckman  
3/16/2021

USE FOR LIGHTING CONSTRUCTION ONLY



INTERIOR PANEL COMPONENT LAYOUT  
6 7 10

- NOTES**
- 1 EQUIPMENT GROUNDS (G) SHALL BE SIZED ACCORDING TO CIRCUIT DESCRIPTION. SEE PLANS.
  - 2 SYSTEM GROUND (SG) SHALL BE CONTINUOUS FROM THE NEUTRAL BAR TO THE GROUNDING ELECTRODE (GROUND ROD).
  - 3 THE NEUTRAL BAR SHALL BE BONDED TO THE PANEL.
  - 4 INSTALL 6 FEEDER CIRCUIT CONDUITS AS SHOWN. UNUSED CONDUIT SHALL BE CAPPED IN THE CONTROL SYSTEM JUNCTION BOX.
  - 5 INSTALL A GROUNDING BUSHING ON EACH METAL CONDUIT. CONNECT BONDING JUMPER AS REQUIRED BY NEC.
  - 6 SEE STANDARD DRAWING 1408.01 SHEET 3 OF 3 FOR ENCLOSURE.
  - 7 THE CONTROL SYSTEM MUST BE LABELED "SUITABLE FOR USE AS SERVICE EQUIPMENT." REFER TO STANDARD SPECIFICATION 1408-2 FOR OTHER REQUIREMENTS.
  - 8 SEE PLANS FOR LIGHTING CIRCUIT BREAKER SIZES.
  - 9 PROVIDE MULTI-TAP LOAD LUGS OR POWER DISTRIBUTION BLOCKS.
  - 10 PROVIDE MANUFACTURER SUPPLIED MOUNTING BRACKETS OR SCREW STUDS PERMANENTLY ATTACHED TO THE BACK PANEL, FOR MOUNTING COMPONENTS.
  - 11 PROVIDE AND INSTALL A CONDUIT CHOKE ON THE UNDERGROUND END OF THE 3/4" RGS SYSTEM GROUND CONDUIT.
  - 12 INSTALL #12 THWN CONDUCTOR FROM ENCLOSURE TO GATEWAY.

| COMPONENT LIST |     |                                   |                   |
|----------------|-----|-----------------------------------|-------------------|
| #              | QTY | DESCRIPTION                       | SPECIFICATIONS    |
| 1              | 1   | NEUTRAL BAR                       |                   |
| 2              | 1   | SERVICE CIRCUIT BREAKER           | 2P, 480V, 150A    |
| 3              | 1   | GATEWAY CIRCUIT BREAKER           | 1P, 240V, 15A     |
| 4              | **  | FEEDER CIRCUIT BREAKERS           | 2P, 480V, 50A MAX |
| 5              | 1   | TYPE 1 SURGE PROTECTION DEVICE    | 20,000A RATED     |
| 6              | 2   | POWER DISTRIBUTION LUGS OR BLOCKS |                   |
|                |     | MOUNTING BRACKETS OR SCREW STUDS  |                   |

\*\*PROVIDE THE NUMBER OF BREAKERS SHOWN IN THE LOAD SCHEDULE ON THE PLANS. INCLUDE SPARE BREAKER AS WELL.

| Rev. | Date | Description | Approved |
|------|------|-------------|----------|
| 2    |      |             |          |
| 1    |      |             |          |

**NORTH CAROLINA**  
**DEPARTMENT OF TRANSPORTATION**  
 ROADWAY DESIGN LIGHTING/ELECTRICAL SECTION  
**CONTROL SYSTEM DETAILS**  
 1408D01, SHEET 1  
**CONTROL SYSTEM SCHEMATIC**  
 NASH COUNTY

Drawn By: TQ      Approved By:      Dwg No.:

08-MAR-2021 22:28  
 R:\Lighting\Lighting Design\B5980.LE.dsn\_PSH.E6.dgn  
 rghall AT RD-303048L