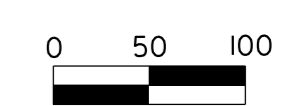
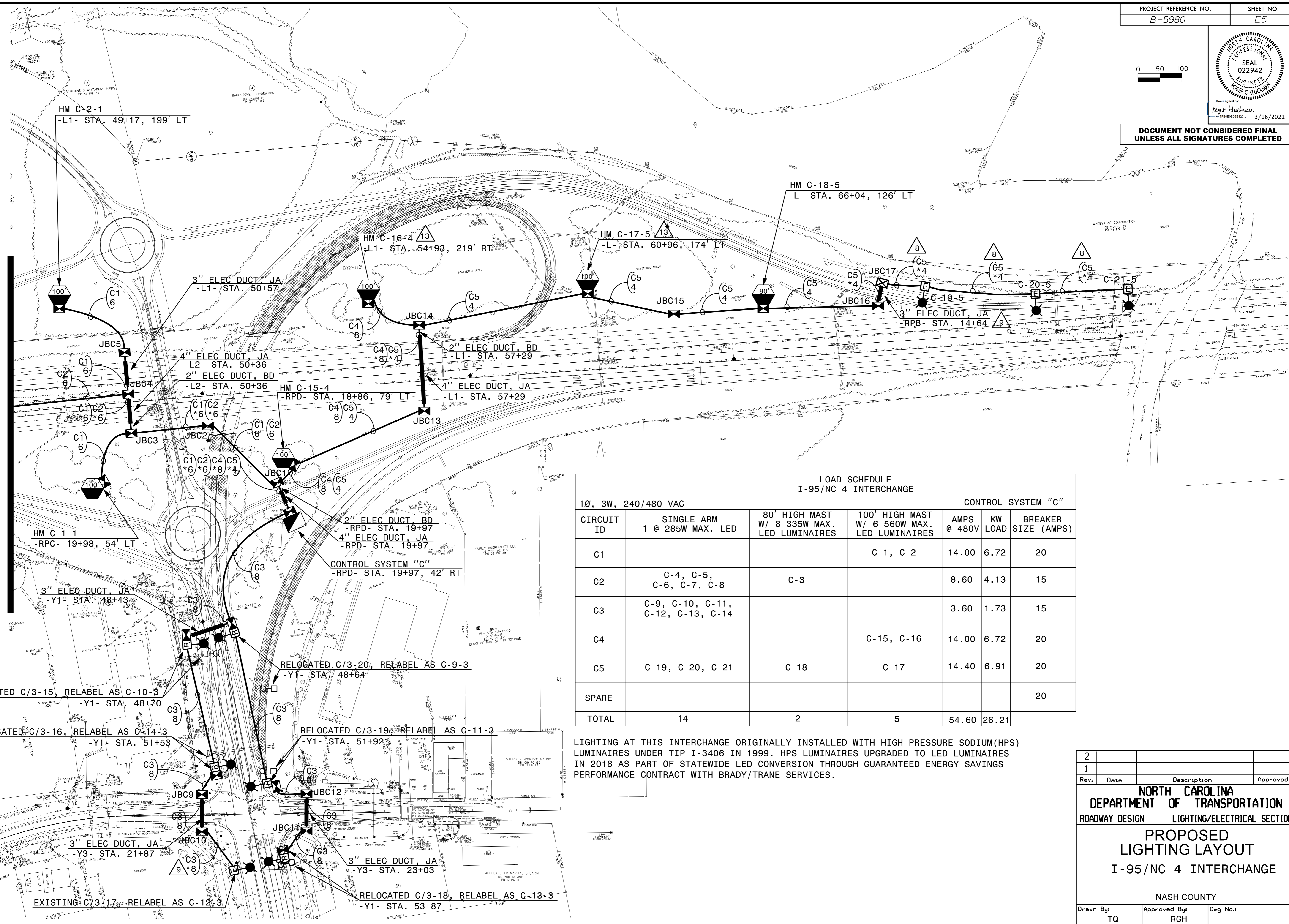


DOCUMENT NOT CONSIDERED FINAL UNLESS ALL SIGNATURES COMPLETED



MATCHLINE - L1 - STA 47+92 - SEE SHEET E4



**LOAD SCHEDULE
I-95/NC 4 INTERCHANGE**

1Ø, 3W, 240/480 VAC		CONTROL SYSTEM "C"				
CIRCUIT ID	SINGLE ARM 1 @ 285W MAX. LED	80' HIGH MAST W/ 8 335W MAX. LED LUMINAIRES	100' HIGH MAST W/ 6 560W MAX. LED LUMINAIRES	AMPS @ 480V	KW LOAD	BREAKER SIZE (AMPS)
C1			C-1, C-2	14.00	6.72	20
C2		C-3		8.60	4.13	15
C3			C-9, C-10, C-11, C-12, C-13, C-14	3.60	1.73	15
C4			C-15, C-16	14.00	6.72	20
C5		C-18	C-17	14.40	6.91	20
SPARE						20
TOTAL	14	2	5	54.60	26.21	

LIGHTING AT THIS INTERCHANGE ORIGINALLY INSTALLED WITH HIGH PRESSURE SODIUM (HPS) LUMINAIRES UNDER TIP I-3406 IN 1999. HPS LUMINAIRES UPGRADED TO LED LUMINAIRES IN 2018 AS PART OF STATEWIDE LED CONVERSION THROUGH GUARANTEED ENERGY SAVINGS PERFORMANCE CONTRACT WITH BRADY/TRANE SERVICES.

2			
1			
Rev.	Date	Description	Approved
NORTH CAROLINA DEPARTMENT OF TRANSPORTATION ROADWAY DESIGN LIGHTING/ELECTRICAL SECTION PROPOSED LIGHTING LAYOUT I-95/NC 4 INTERCHANGE NASH COUNTY			
Drawn By:	TQ	Approved By:	RGH
Dwg No.:			

I5-MAR-2021 10:54
R:\Lighting\Lighting Design\B5980-LE-DSN-PSH-E5.dgn
rghe1 At RD-303048L