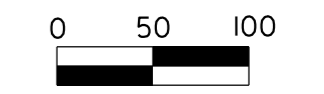
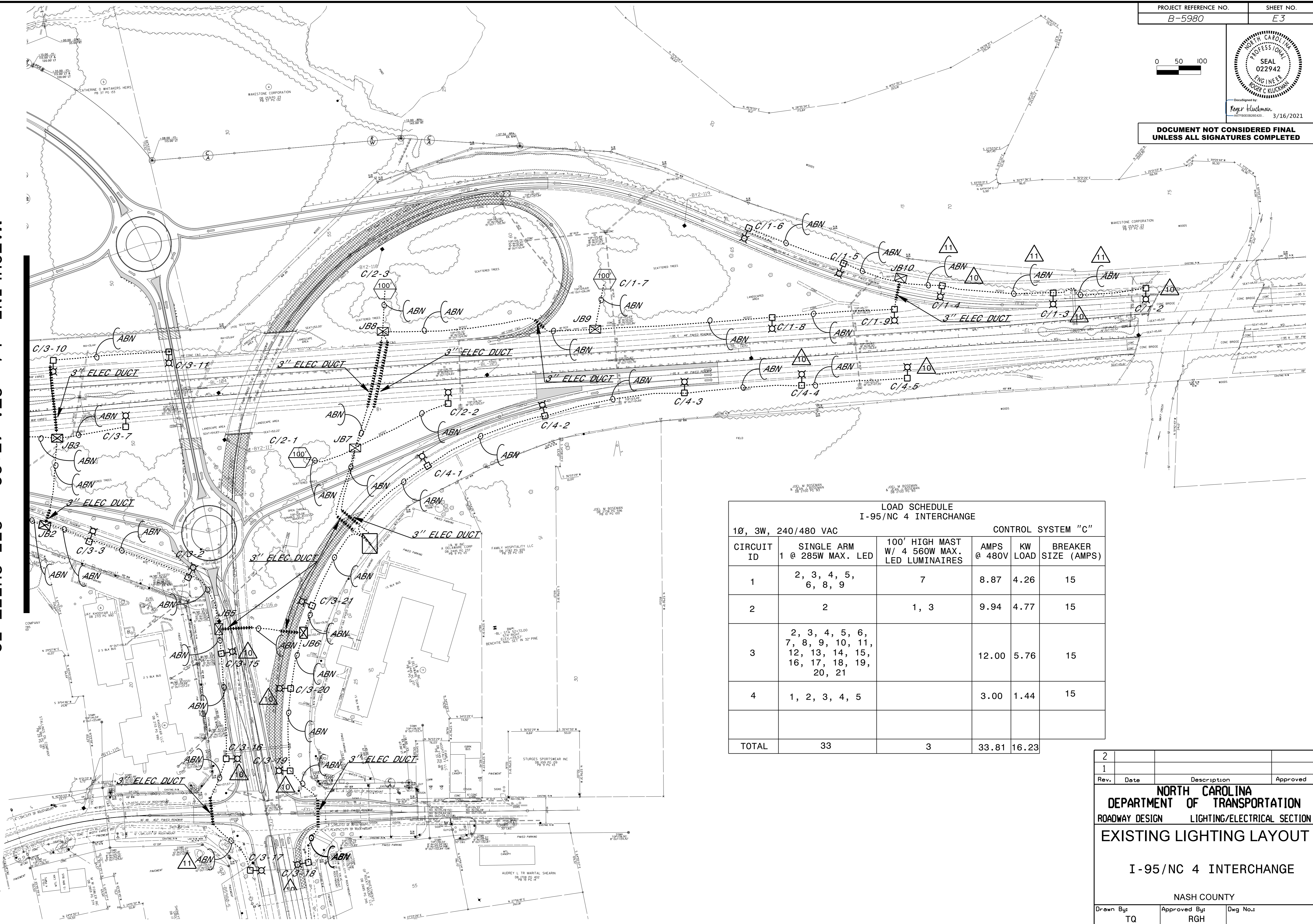




DOCUMENT NOT CONSIDERED FINAL UNLESS ALL SIGNATURES COMPLETED



MATCHLINE - L1 - STA 47+92 - SEE SHEET E2



LOAD SCHEDULE
I-95/NC 4 INTERCHANGE

1Ø, 3W, 240/480 VAC CONTROL SYSTEM "C"

CIRCUIT ID	SINGLE ARM 1 @ 285W MAX. LED	100' HIGH MAST W/ 4 560W MAX. LED LUMINAIRES	AMPS @ 480V	KW LOAD	BREAKER SIZE (AMPS)
1	2, 3, 4, 5, 6, 8, 9	7	8.87	4.26	15
2	2	1, 3	9.94	4.77	15
3	2, 3, 4, 5, 6, 7, 8, 9, 10, 11, 12, 13, 14, 15, 16, 17, 18, 19, 20, 21		12.00	5.76	15
4	1, 2, 3, 4, 5		3.00	1.44	15
TOTAL	33	3	33.81	16.23	

2			
1			
Rev.	Date	Description	Approved
NORTH CAROLINA DEPARTMENT OF TRANSPORTATION ROADWAY DESIGN LIGHTING/ELECTRICAL SECTION EXISTING LIGHTING LAYOUT I-95/NC 4 INTERCHANGE NASH COUNTY			
Drawn By:	TQ	Approved By:	RGH
Dwg No.:			

I5-MAR-2021 11:37 AM LightDesign\Lighting Design\5980-LE-DSN-PSH-LE3.dgn rghel AT RD-303048L