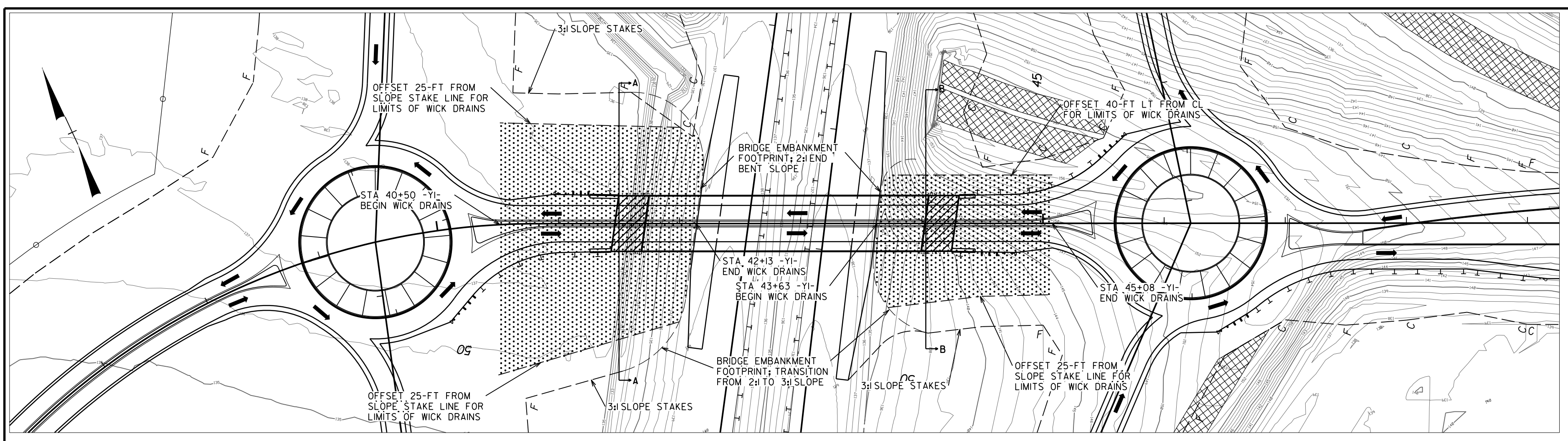
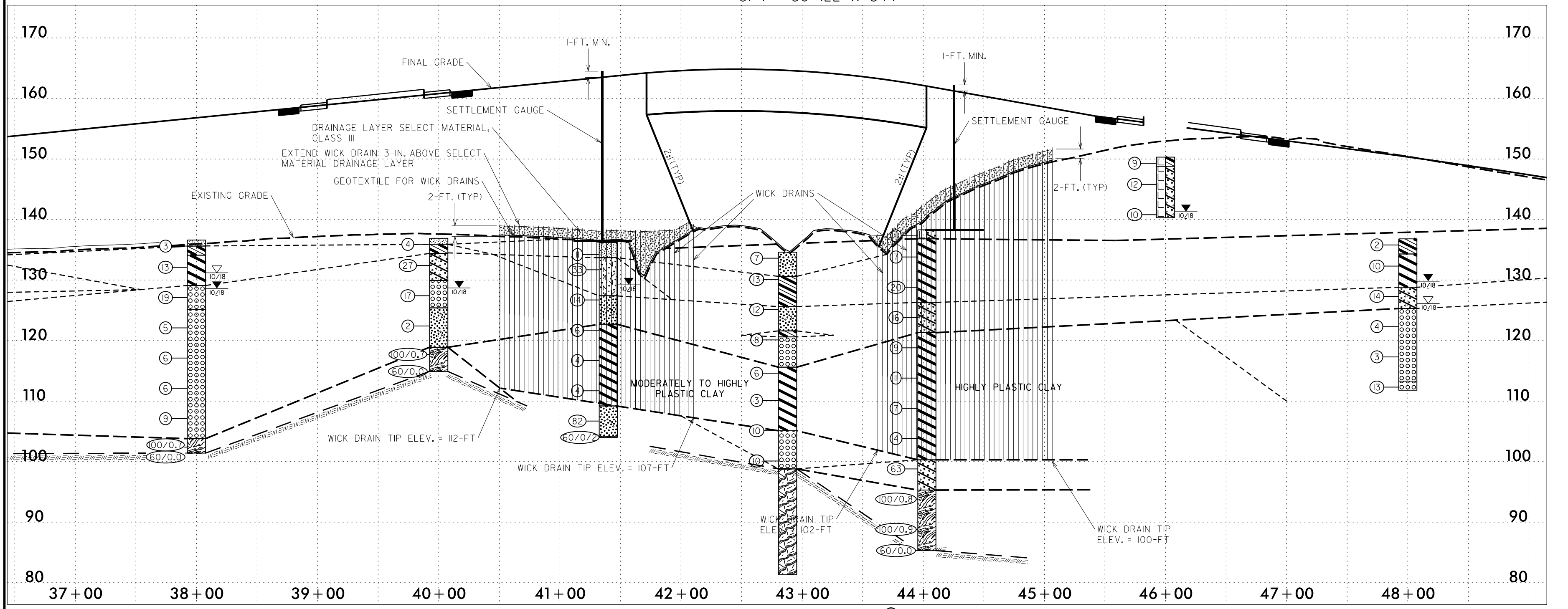


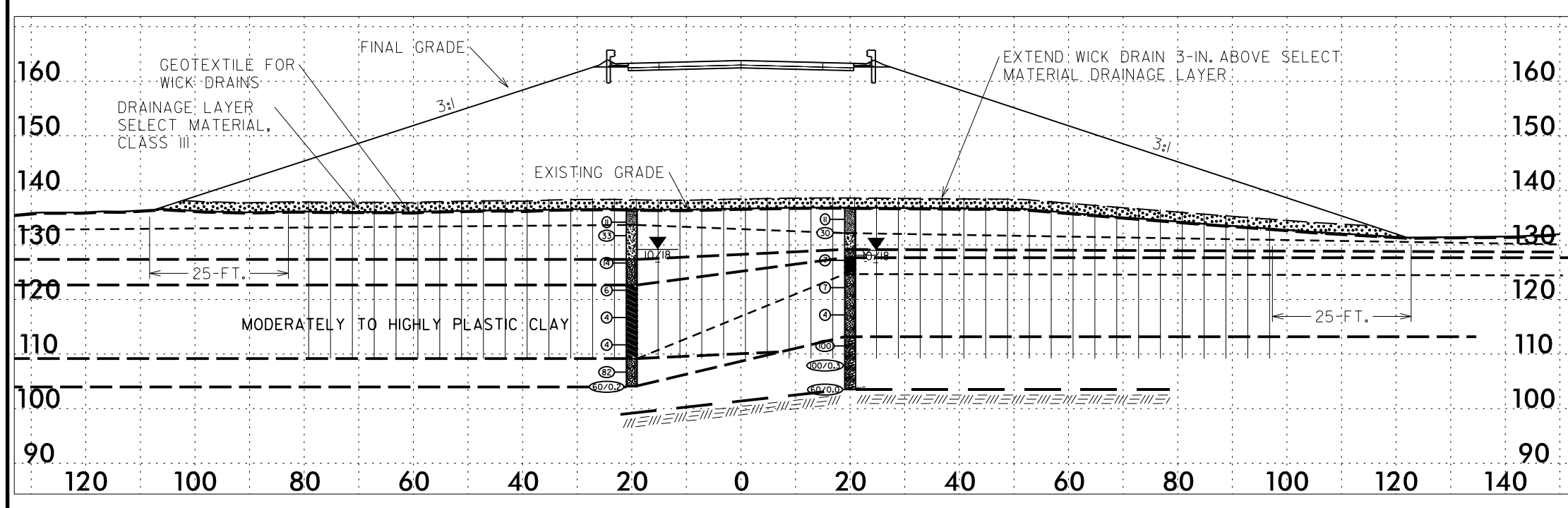
DGN: G:\DCS\Projects\URS\Subs\URS-5980-Halfra Rd Interchange\400-Interchange\400-Technical\431\_Geotechnical\B5980\_GEO\_RDWY\CADD\_GEO\_TechPlan\B5980\_GEO\_WickDrain\_Bridge.dgn  
 USER: ryanpadoyle



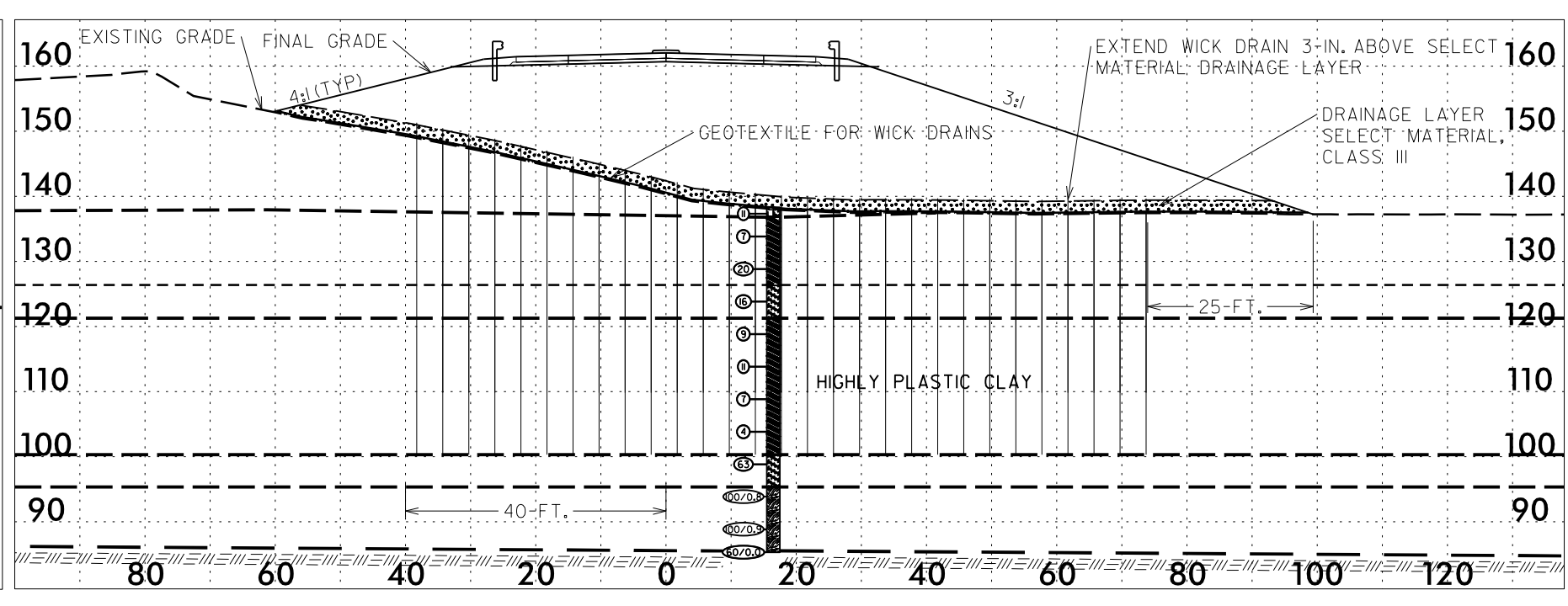
**EMBankment Plan View**  
3/4" = 50' (22" x 34")



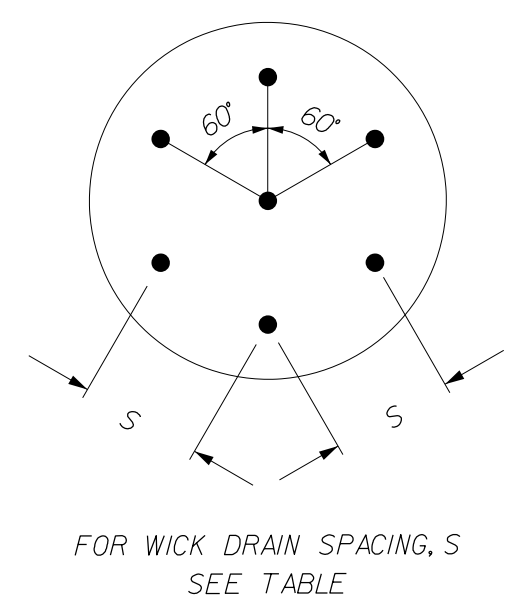
**SECTION ALONG C-Y1**  
3/4" = 50' HORIZ. (5:1 VE) (22" x 34")



**A-A CROSS SECTION**  
1" = 25' (22" x 34")



**B-B CROSS SECTION**  
1" = 25' (22" x 34")



WICK DRAIN SYSTEM CONFIGURATION				
STATIONS		LINE	WICK DRAIN SPACING, S	MINIMUM WAITING PERIOD
FROM	TO			
40 + 50	42 + 13	- Y1 -	4 FT.	6 MONTHS
43 + 63	45 + 08	- Y1 -	4 FT.	6 MONTHS

**NOTES**

- FOR WICK DRAINS, SEE INSTALLATION OF VERTICAL WICK DRAINS AND DRAINAGE LAYER SPECIAL PROVISION.
- GEOTEXTILE FOR WICK DRAINS SHALL BE PLACED ON EXISTING GROUND AS SHOWN ON THE PLANS OR DIRECTED BY THE ENGINEER.
- THE DRAINAGE LAYER OF SELECT MATERIAL CLASS III SHALL BE INSTALLED AS SHOWN ON THE PLANS OR DIRECTED BY THE ENGINEER.
- INSTALL WICK DRAINS AS DIRECTED BY PROVISIONS, PLANS, AND/OR ENGINEER AFTER THE SELECT BACKFILL HAS BEEN PLACED AND COMPACTED. WICK DRAINS SHALL PENETRATE THE BACKFILL AND SHALL BE INSTALLED TO THE LENGTH SHOWN ON THE PLANS AND/OR DIRECTED BY THE ENGINEER.
- PRE-AUGERING MAY BE REQUIRED TO INSTALL THE WICK DRAINS. IF PRE-AUGERING IS NECESSARY, THE COST OF PRE-AUGERING IS INCIDENTAL TO THE COST OF THE WICK DRAINS.
- CONSTRUCT EMBANKMENT TO THE FINAL GRADE.
- MAINTAIN EMBANKMENT ELEVATIONS THROUGHOUT THE WAITING PERIODS.
- FOR SETTLEMENT GAUGE, SEE SECTION 235 OF STANDARD SPECIFICATION AND ROADWAY STANDARD DRAWING NO. 235.01.
- WAITING PERIOD BEGINS AFTER INSTALLING EMBANKMENT.

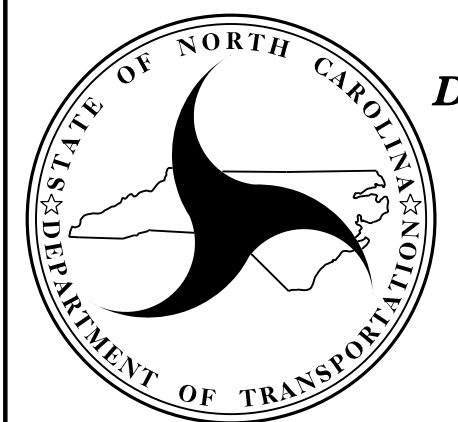
**ESTIMATED QUANTITIES**

WICK DRAINS	108,000 FT.
SELECT MATERIAL, CLASS III	3,600 CY.
GEOTEXTILE FOR WICK DRAINS	5,000 SY.

**WICK DRAIN DETAILS  
- Y1 - BRIDGE OVER I-95**

REVISIONS					
NO.	BY	DATE	NO.	BY	DATE
1	RPD	05/24/19	3	-	-
2	RPD	06/20/19	4	-	-

PREPARED BY: RPD	DATE: 03/19/19
REVIEWED BY: ZAA	DATE: 03/19/19



**NORTH CAROLINA  
DEPARTMENT OF TRANSPORTATION  
DIVISION OF HIGHWAYS**  
  
**GEOTECHNICAL  
ENGINEERING UNIT**