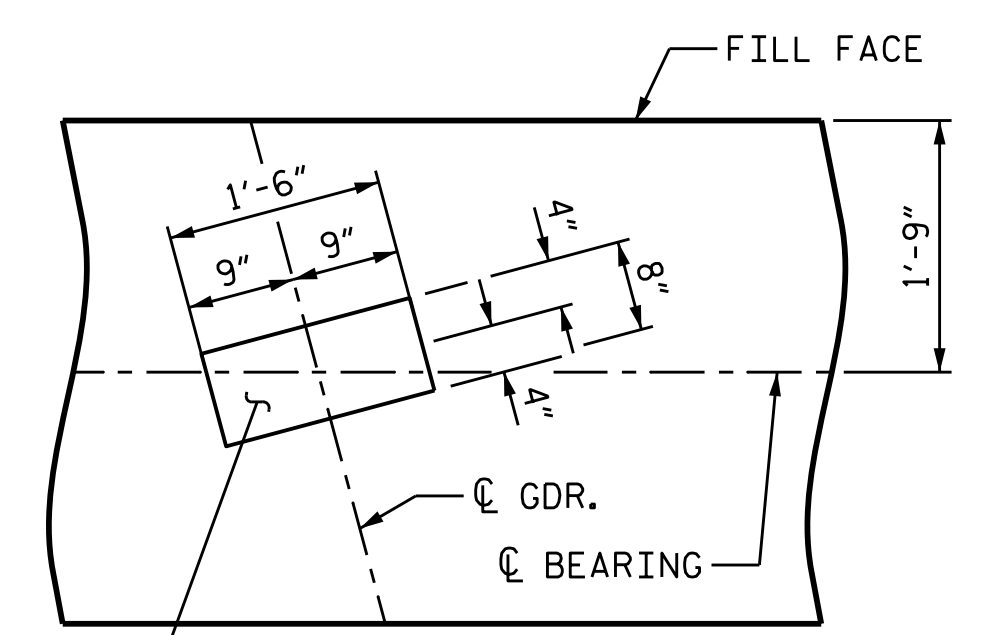
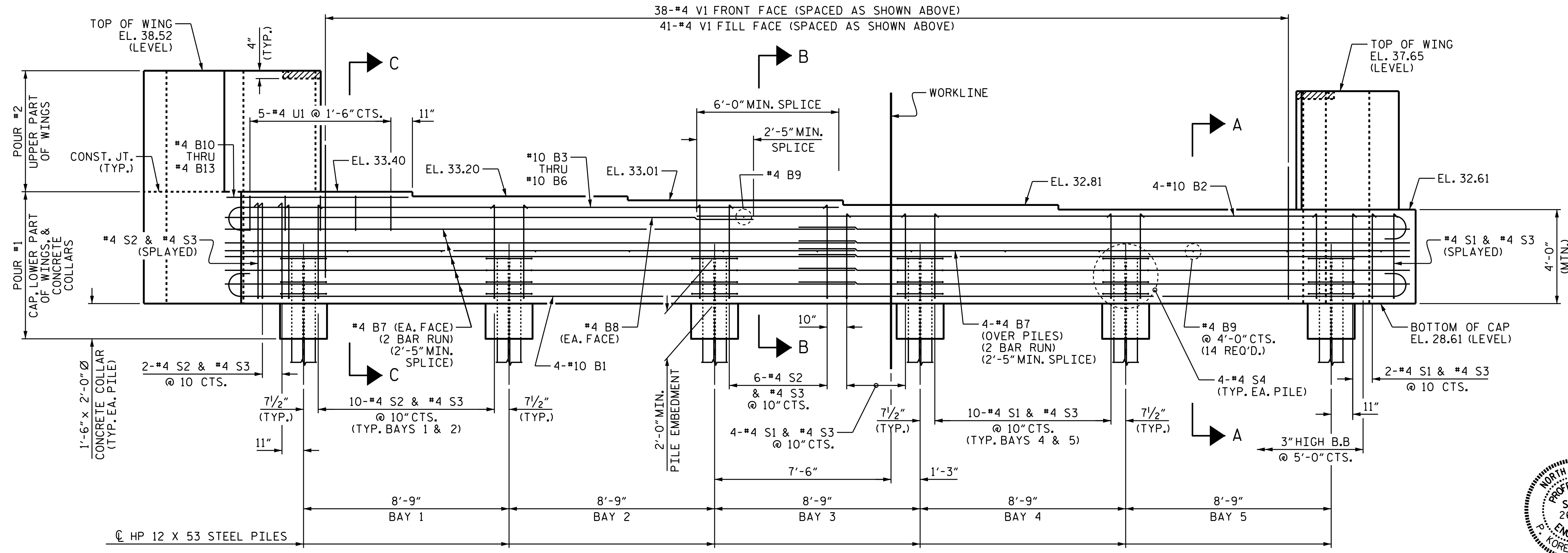


PLAN

NOTES
 STIRRUPS IN CAP MAY BE SHIFTED AS NECESSARY TO CLEAR #4 V1 BARS.
 THE CONCRETE IN THE SHADED AREA OF THE WING SHALL BE POURED AFTER THE BARRIER RAIL IS CAST IF SLIP FORMING IS USED.
 THE TOP SURFACE OF THE END BENT CAP AND WINGS, EXCLUDING THE BEARING AREA SHALL BE RAKED TO A DEPTH OF 1/4".
 THE UPPER PORTION OF THE INTEGRAL END BENT SHALL BE POURED WITH THE SUPERSTRUCTURE. SEE SUPERSTRUCTURE PLANS.
 FOR WING DETAILS, SEE SHEET 2 OF 3.
 FOR PILE SPLICE DETAILS, SEE SHEET 3 OF 3.



DETAIL "A"
(TYP. EA. GDR.)

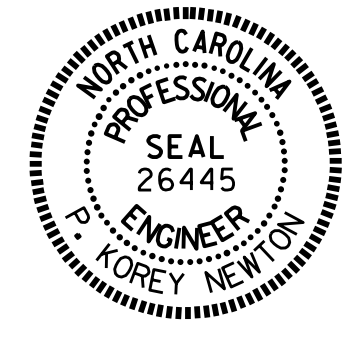


ELEVATION

LEFT WING NOT SHOWN FOR CLARITY.
 FOR SECTION A-A, B-B, AND C-C, SEE SHEET 3 OF 3.

PROJECT NO. BR-0017
DUPLIN COUNTY
 STATION: 18+27.00 -L-

SHEET 1 OF 3



STATE OF NORTH CAROLINA
 DEPARTMENT OF TRANSPORTATION
 RALEIGH
SUBSTRUCTURE
INTEGRAL END BENT 2

DRAWN BY: P. K. NEWTON DATE: 2/25/21
 CHECKED BY: P. D. BRYANT DATE: 3/1/21
 DESIGN ENGINEER OF RECORD: P. D. BRYANT DATE: 3/1/21

DOCUMENT NOT CONSIDERED
 FINAL UNLESS ALL
 SIGNATURES COMPLETED

REVISIONS						SHEET NO.
NO.	BY:	DATE:	NO.	BY:	DATE:	S-23
1			3			TOTAL SHEETS
2			4			28