

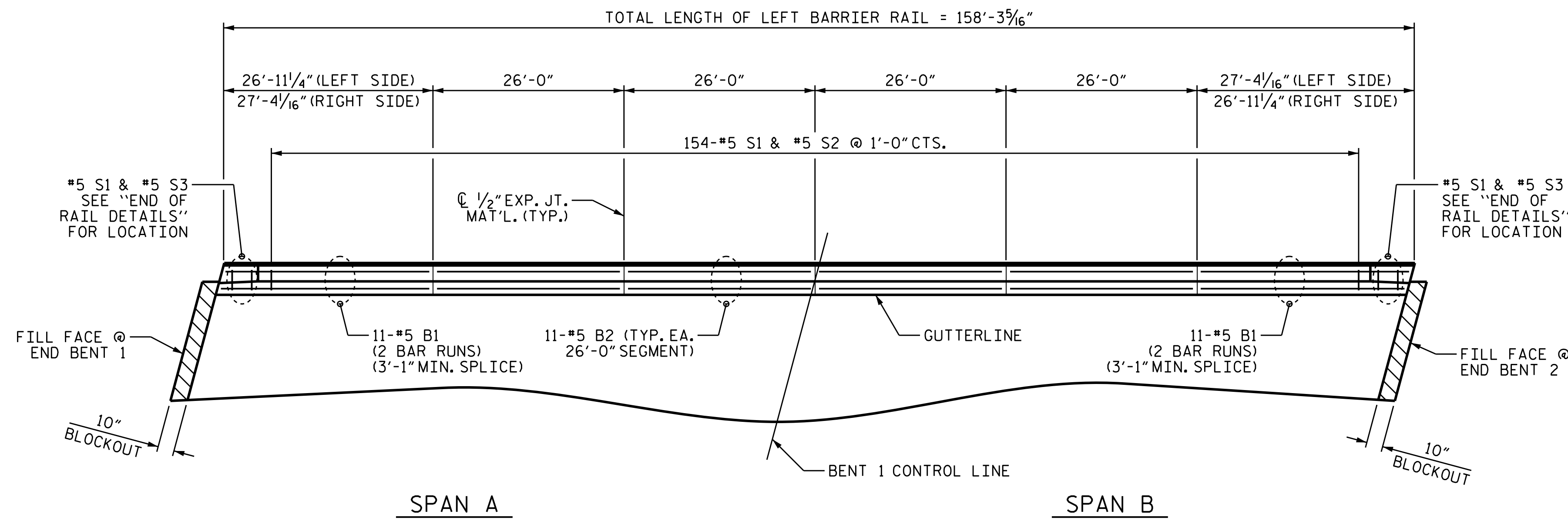
NOTES

THE BARRIER RAIL SHALL NOT BE CAST UNTIL ALL SLAB CONCRETE IN THAT UNIT HAS BEEN CAST AND HAS REACHED A MINIMUM COMPRESSIVE STRENGTH OF 3,000 PSI.

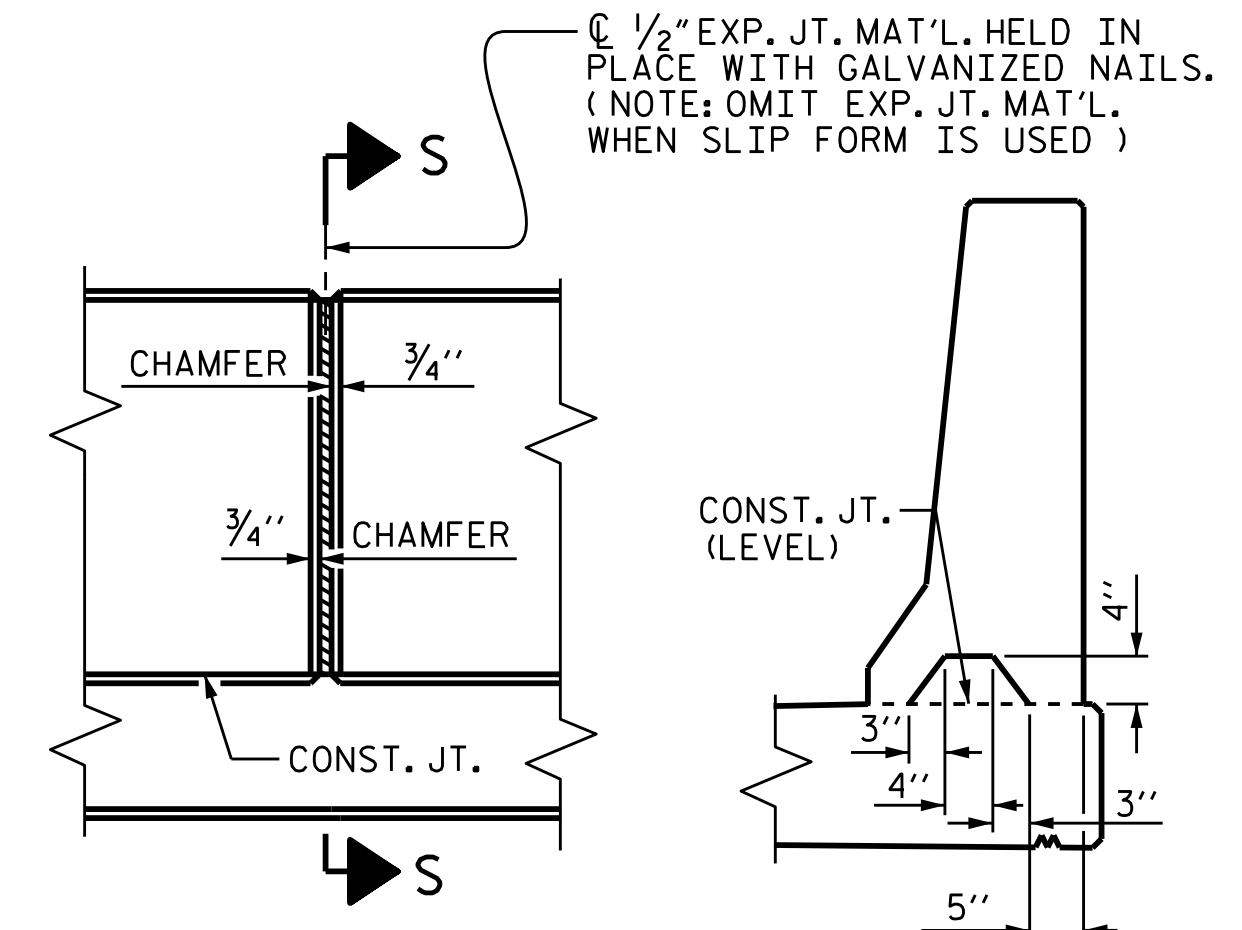
ALL REINFORCING STEEL IN BARRIER RAILS SHALL BE EPOXY COATED.

GROOVED CONTRACTION JOINTS, 1/2" IN DEPTH, SHALL BE TOOLED IN ALL EXPOSED FACES OF THE BARRIER RAIL AND IN ACCORDANCE WITH ARTICLE 825-10(B) OF THE STANDARD SPECIFICATIONS. THE CONTRACTION JOINT SHALL BE LOCATED AT EACH THIRD POINT BETWEEN BARRIER RAIL EXPANSION JOINTS. ONLY ONE CONTRACTION JOINT IS REQUIRED AT MIDPOINT OF BARRIER RAIL SEGMENTS LESS THAN 20 FEET IN LENGTH AND NO CONTRACTION JOINTS ARE REQUIRED FOR THOSE SEGMENTS LESS THAN 10 FEET IN LENGTH.

BAR TYPES					
ALL BAR DIMENSIONS ARE OUT TO OUT					
BILL OF MATERIAL					
FOR CONCRETE BARRIER RAIL ONLY					
BAR	NO.	SIZE	TYPE	LENGTH	WEIGHT
* B1	88	#5	STR	15'-0"	1377
* B2	88	#5	STR	25'-7"	2348
* S1	316	#5	1	4'-8"	1538
* S2	308	#5	2	7'-0"	2249
* S3	8	#5	2	5'-6"	46
* EPOXY COATED REINFORCING STEEL					7558 LBS.
CLASS AA CONCRETE				43.0 CU. YDS.	
CONCRETE BARRIER RAIL					316.55 LIN. FT.

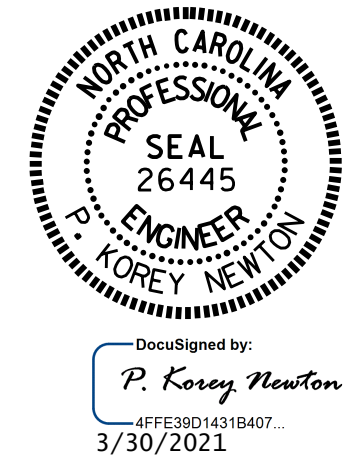
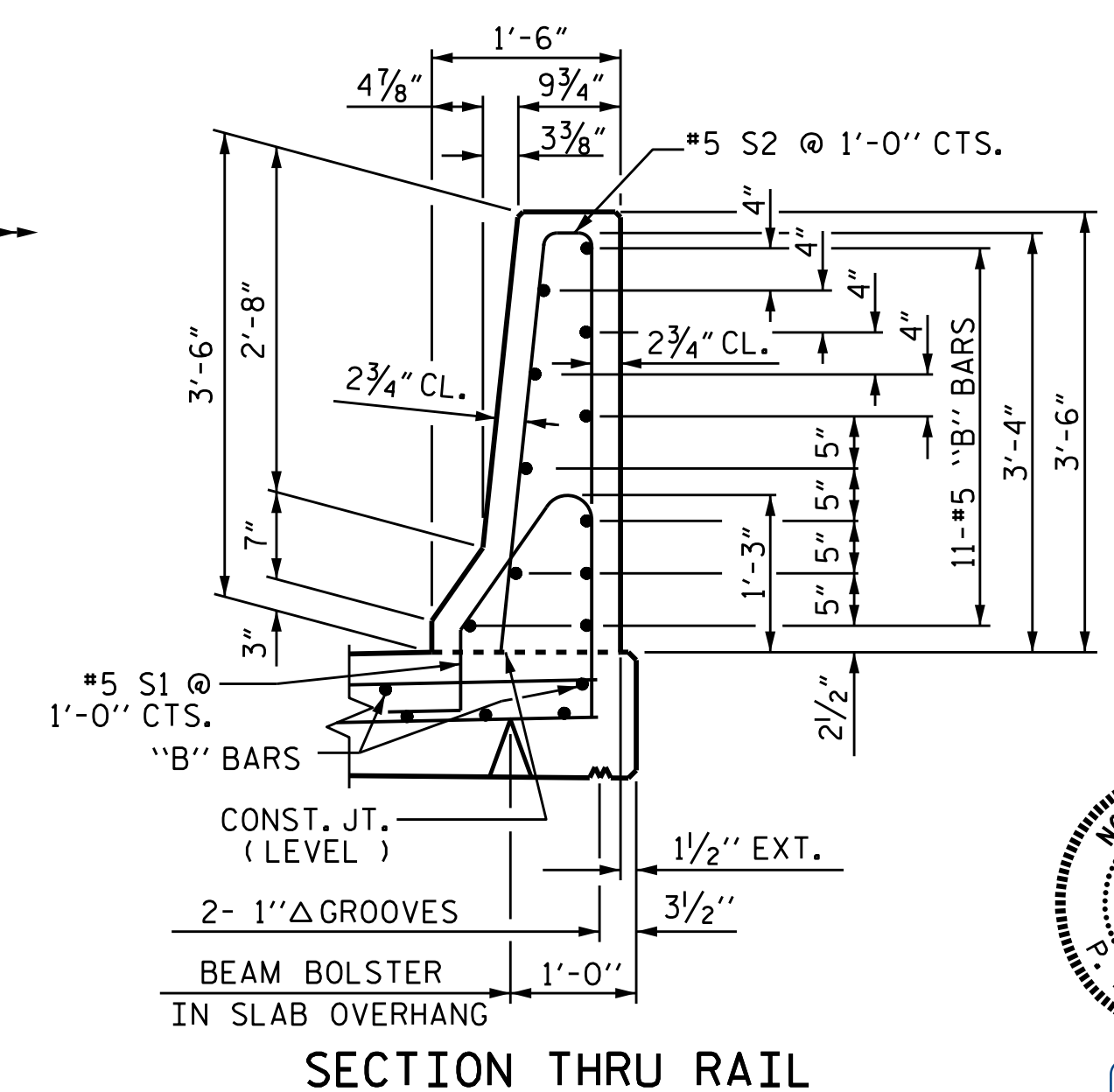
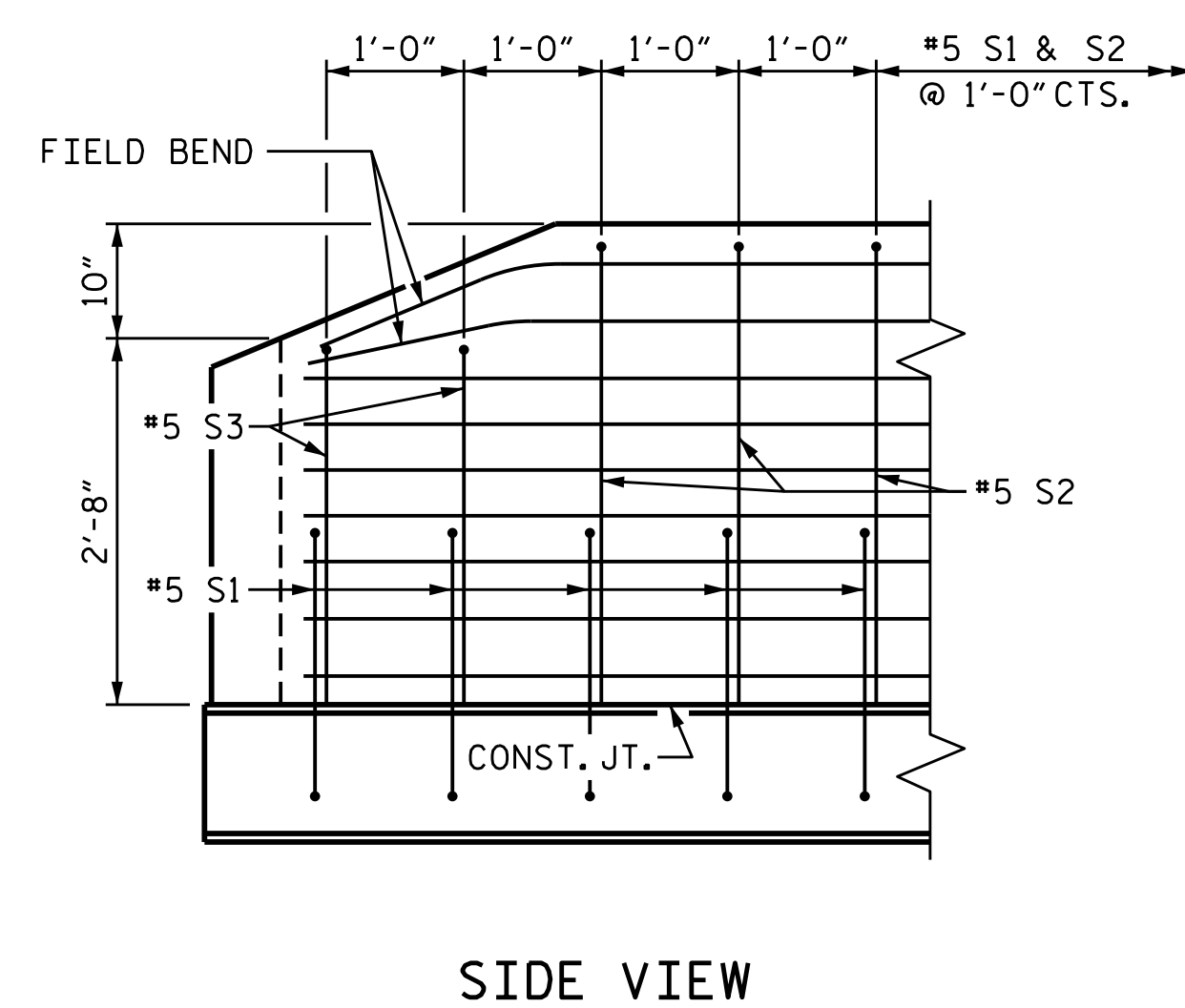
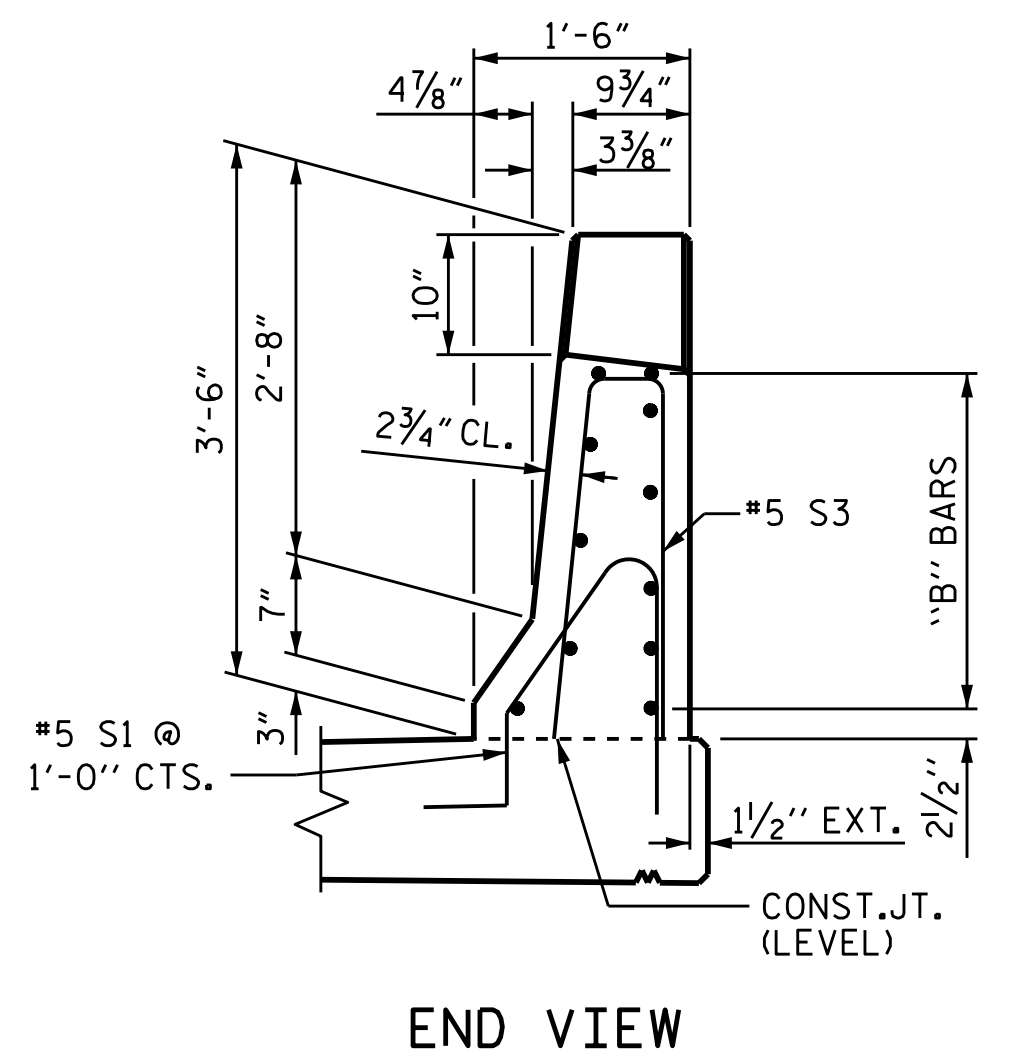
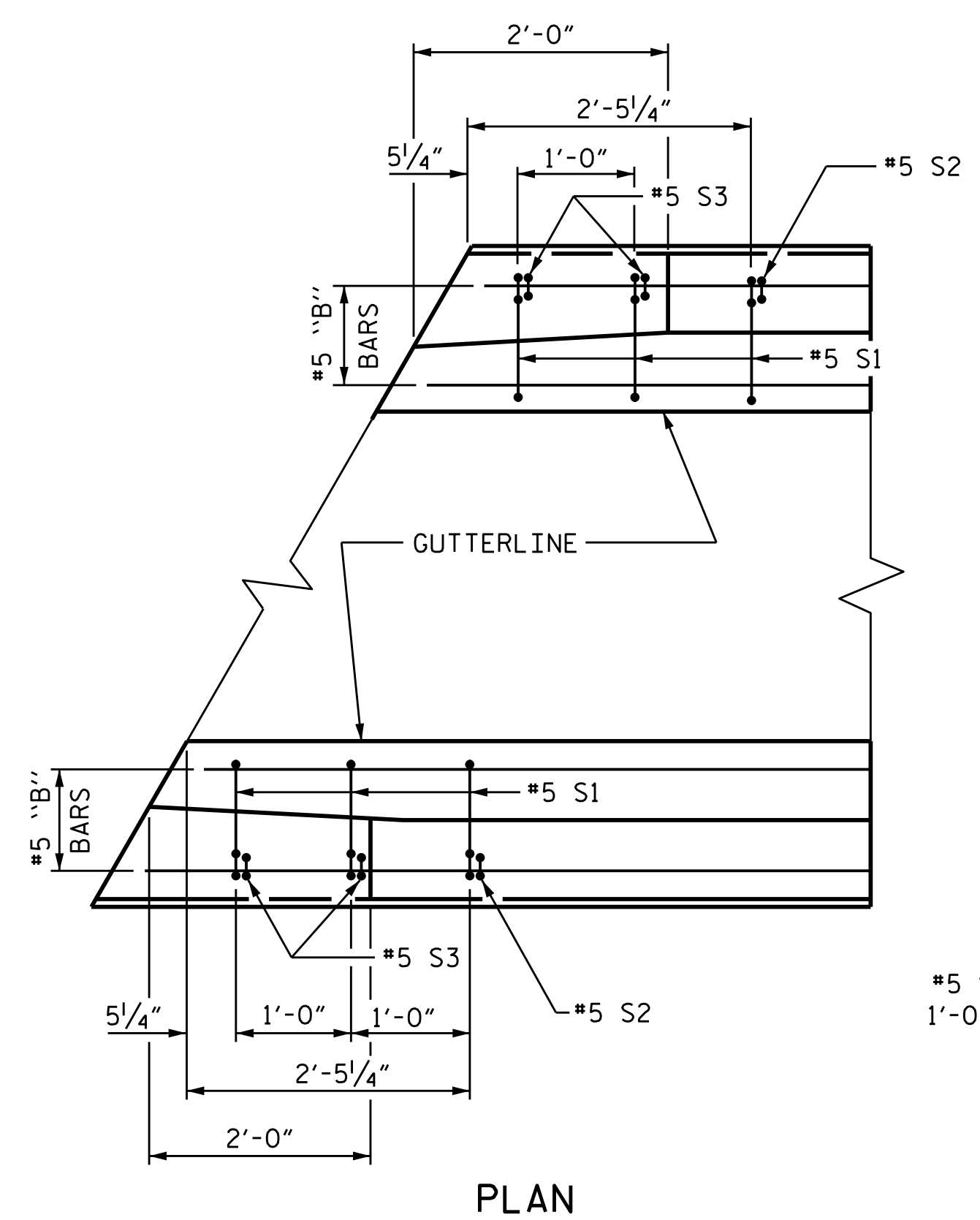


PART PLAN
LEFT SIDE SHOWN, RIGHT SIDE SIMILAR BY ROTATION. RAIL DIMENSIONS ARE MEASURED ALONG THE OUTSIDE FACE.



SECTION S-S
AT DAM IN OPEN JOINT (THIS IS TO BE USED ONLY WHEN SLIP FORM IS USED)

ELEVATION AT EXPANSION JOINTS BARRIER RAIL DETAILS



PROJECT NO. BR-0017
DUPLIN COUNTY
STATION: 18+27.00 -L-

STATE OF NORTH CAROLINA
DEPARTMENT OF TRANSPORTATION
RALEIGH
SUPERSTRUCTURE
CONCRETE
BARRIER RAIL

DRAWN BY: P. K. NEWTON DATE: 2/10/21
CHECKED BY: M. K. BEARD DATE: 2/10/21
DESIGN ENGINEER OF RECORD: P. D. BRYANT DATE: 3/12/21

DOCUMENT NOT CONSIDERED FINAL UNLESS ALL SIGNATURES COMPLETED

REVISIONS						SHEET NO. S-14
NO.	BY:	DATE:	NO.	BY:	DATE:	
1			3			TOTAL SHEETS 28
2			4			