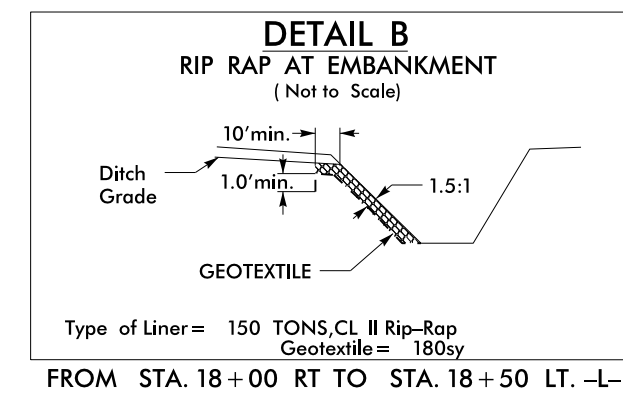
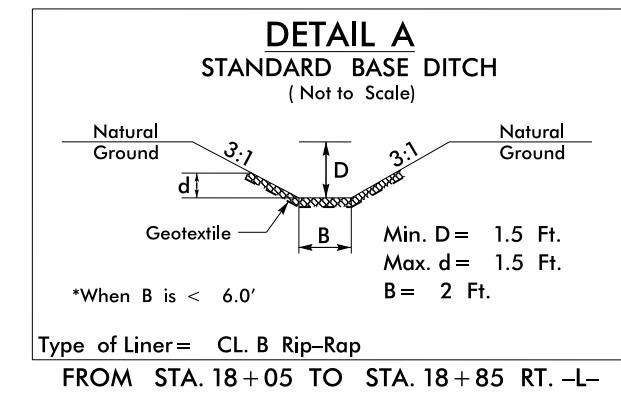
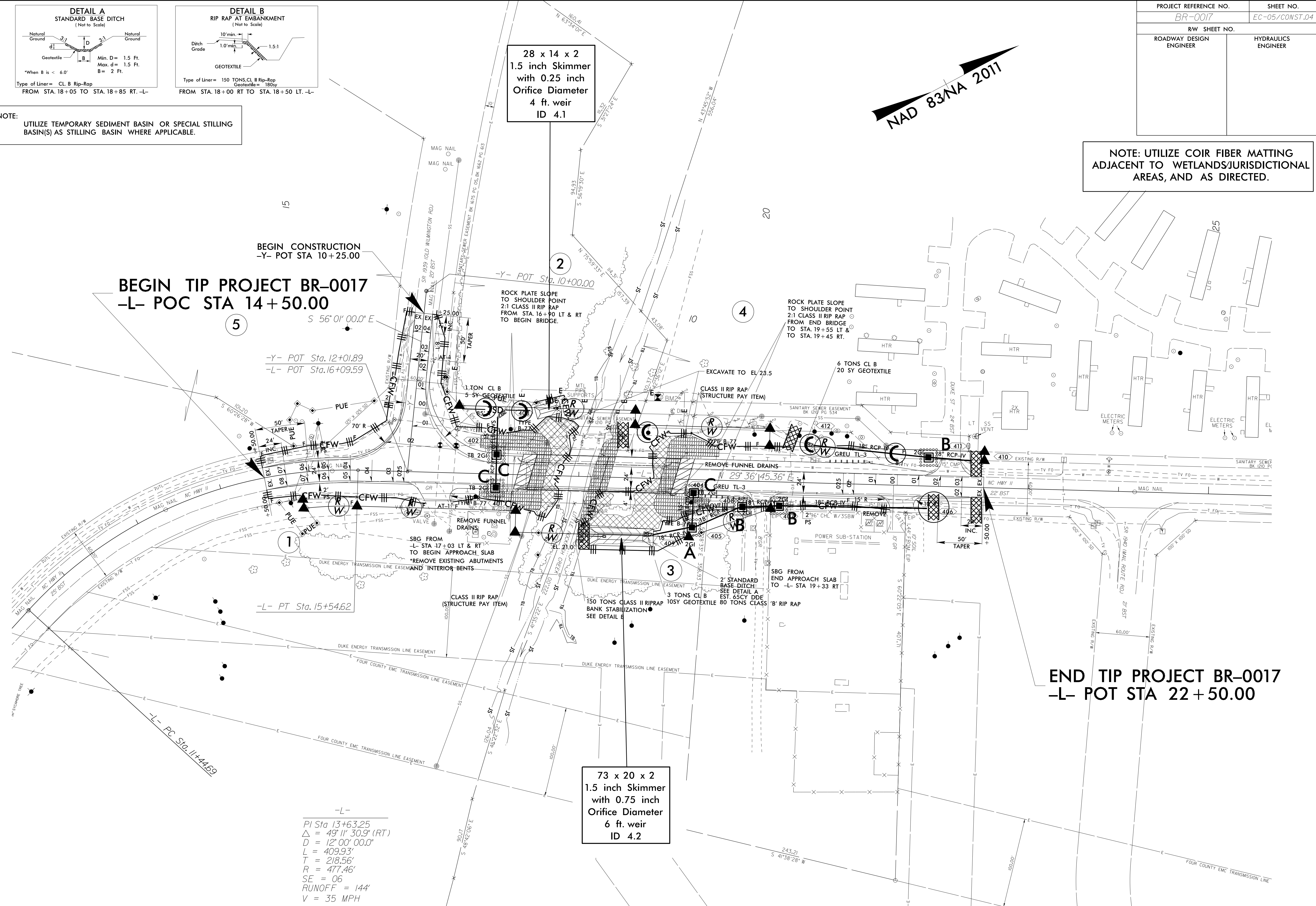
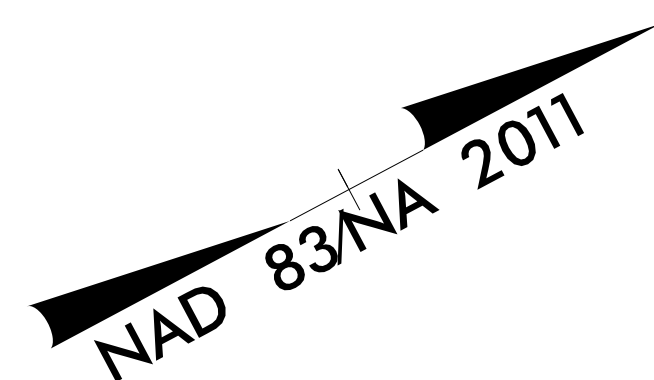


PROJECT REFERENCE NO. BR-0017	SHEET NO. EC-05/CONST.04
RW SHEET NO. ROADWAY DESIGN ENGINEER	HYDRAULICS ENGINEER



NOTE:  
UTILIZE TEMPORARY SEDIMENT BASIN OR SPECIAL STILLING BASIN(S) AS STILLING BASIN WHERE APPLICABLE.

NOTE: UTILIZE COIR FIBER MATTING ADJACENT TO WETLANDS/JURISDICTIONAL AREAS, AND AS DIRECTED.



-L-  
PI Sta 13+63.25  
Δ = 49' 11" 30.9" (RT)  
D = 12' 00" 00.0"  
L = 409.93'  
T = 218.56'  
R = 477.46'  
SE = 06  
RUNOFF = 144'  
V = 35 MPH

NOTE:  
FOR -L- PROFILE, SEE SHEET 5

8/17/99  
C:\PROJECTS\BR0017\BR0017.DWG  
PLANNING  
8/17/99