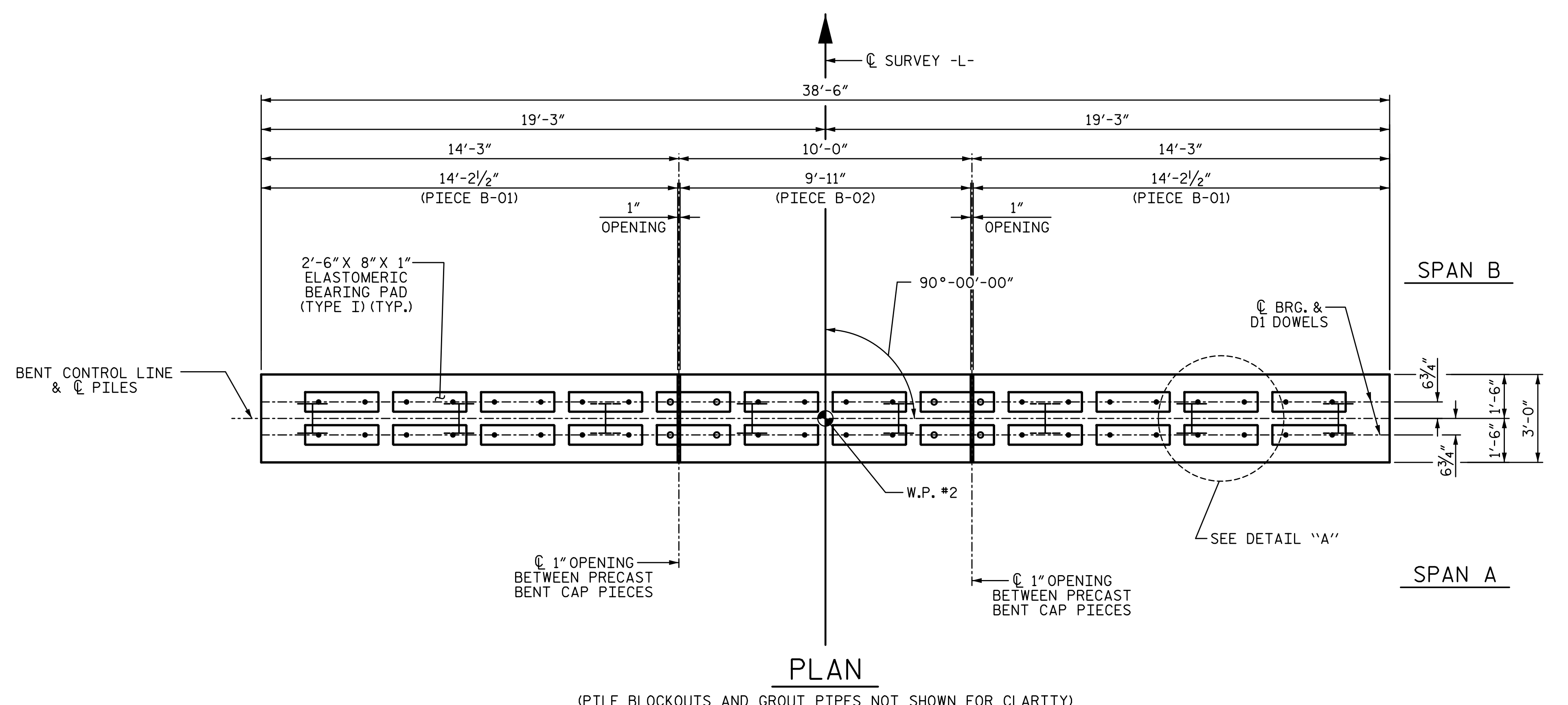
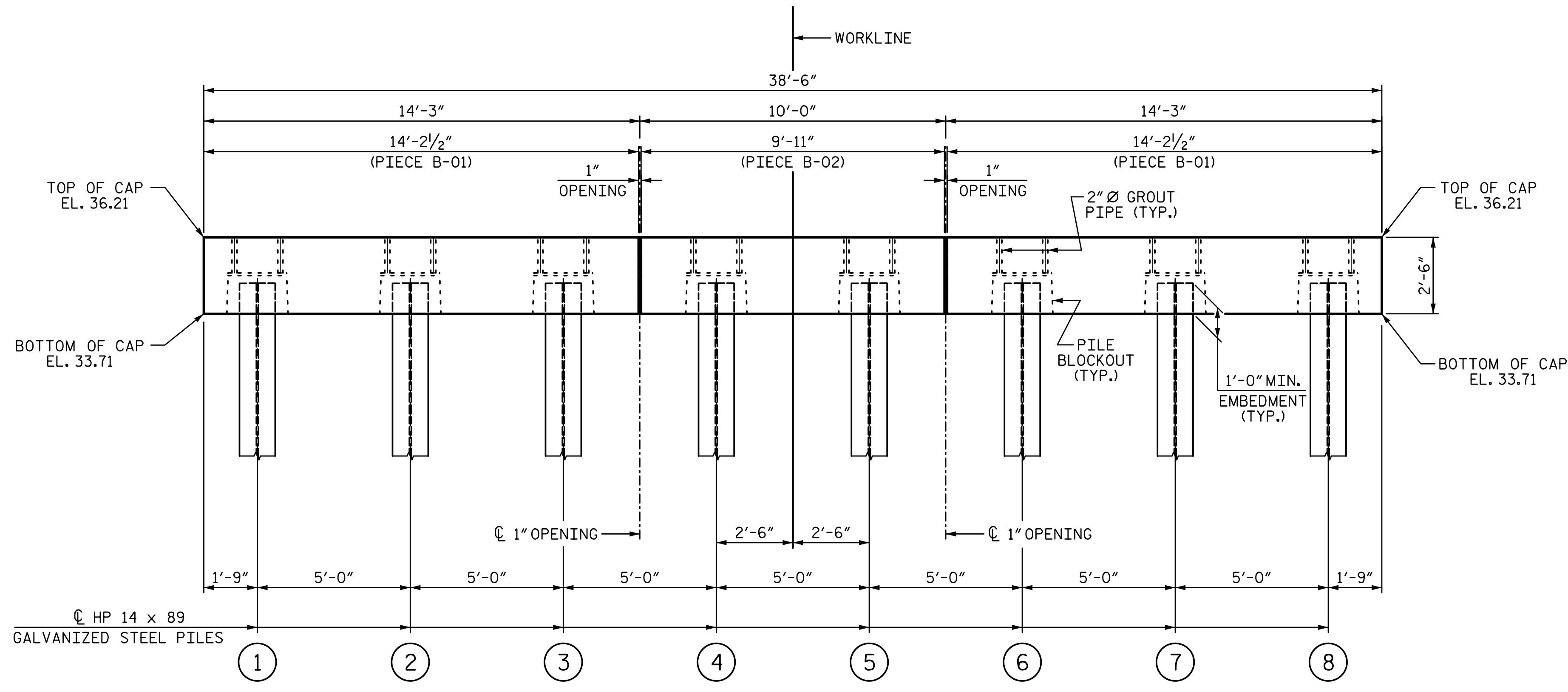


2/20/2020 2:19:49 PM G:\Projects\2018\Division 3 (SEA)\B-5626 (Onslow 31 NC50 over Sandy Run Swamp)\Structures\Drawings\Final\401_B5626_SMJ_BT_660031.dgn



PLAN

(PILE BLOCKOUTS AND GROUT PIPES NOT SHOWN FOR CLARITY)

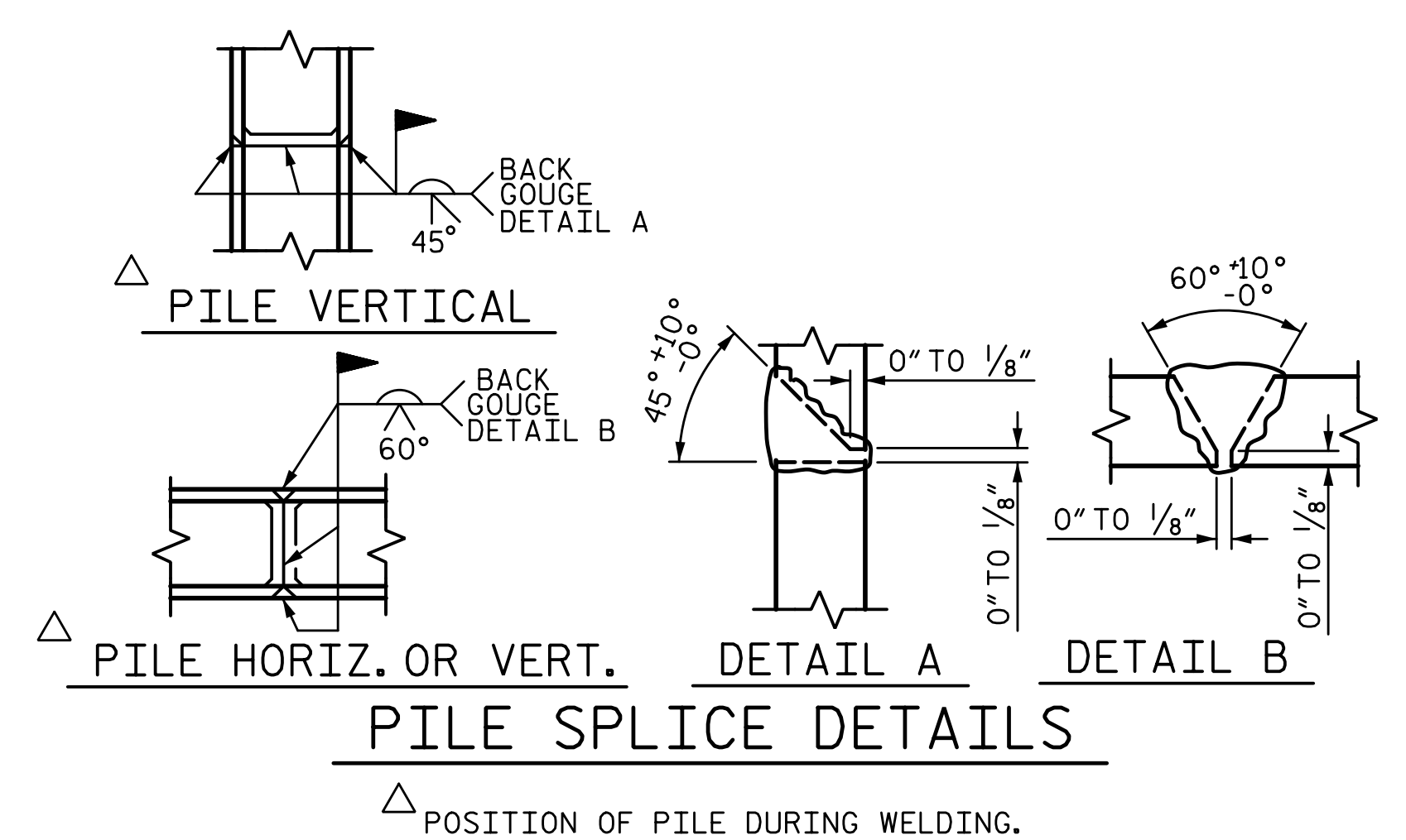


ELEVATION

FOR 2" Ø GROUT PIPE AND PILE BLOCKOUT DETAILS, SEE SHEET 5 OF 5

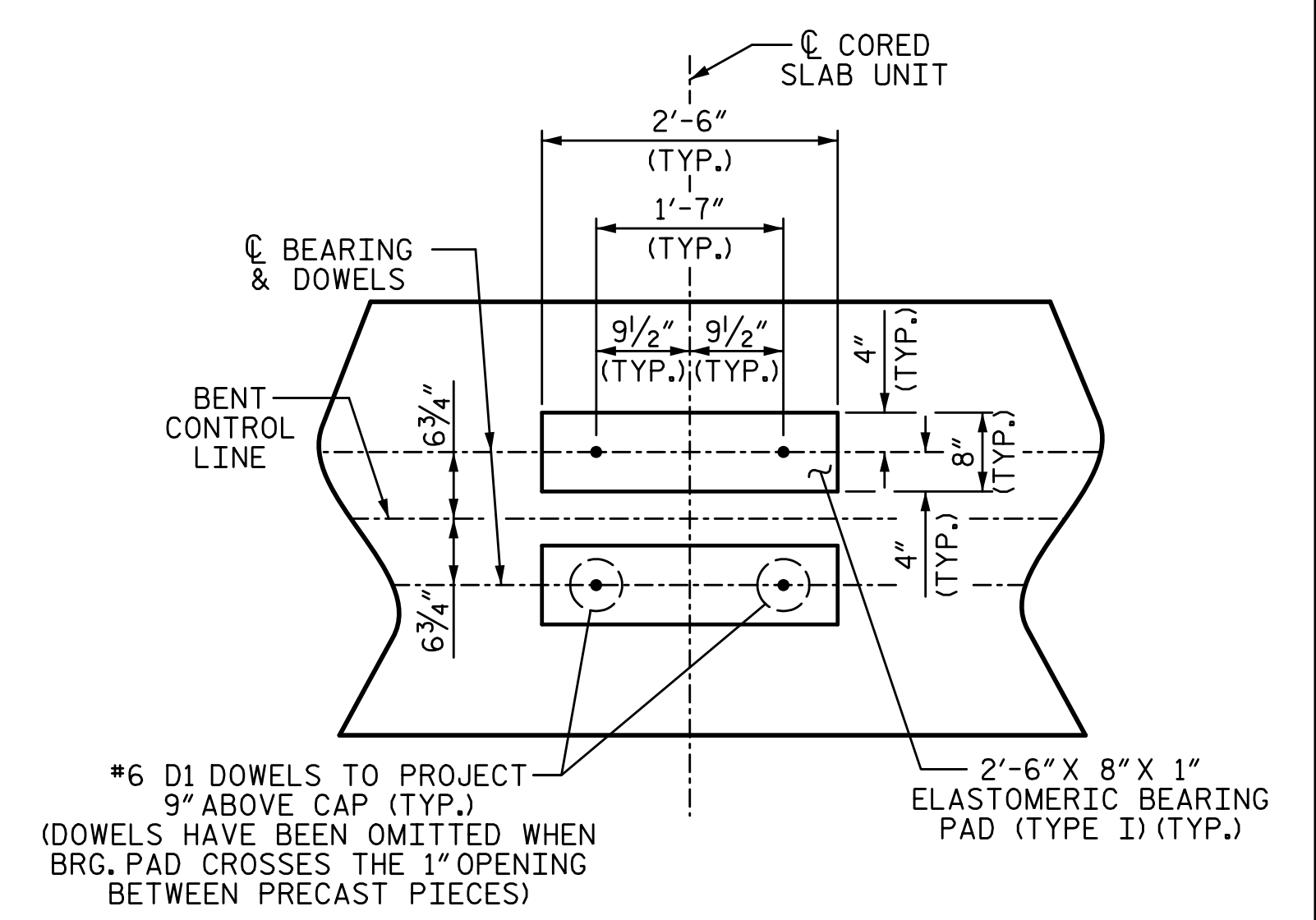
NOTES:

FOR PRECAST CAP DETAILS AND BILL OF MATERIAL, SEE "PIECE B-01" & "PIECE B-02" SHEETS.
 GALVANIZE THE TOP OF EACH INTERIOR BENT PILE A MINIMUM OF 30 FEET. GALVANIZE IN ACCORDANCE WITH SECTION 1076 OF THE STANDARD SPECIFICATIONS.
 FOR GROUT FOR STRUCTURES, SEE SPECIAL PROVISIONS.
 FOR 3'-0" x 2'-6" PRESTRESSED CONCRETE BENT CAPS, SEE SPECIAL PROVISIONS.



PILE SPLICE DETAILS

△ POSITION OF PILE DURING WELDING.



DETAIL "A"

(DIMENSIONS ARE TYPICAL EACH BEARING)

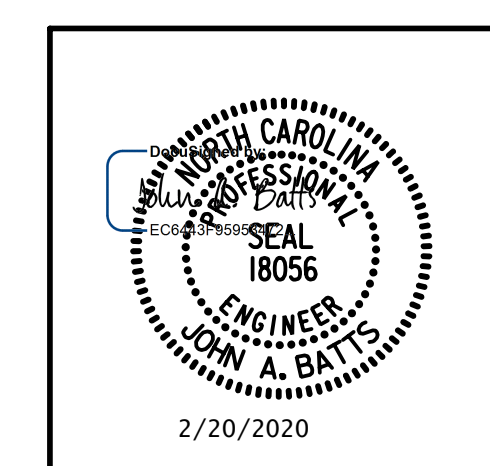
PROJECT NO. B-5626
 ONSLOW COUNTY
 STATION: 23+71.50 -L-

SHEET 1 OF 5

DRAWN BY: S.D. COOPER	DATE: 2-20
CHECKED BY: J.A. BATTS	DATE: 2-20
DESIGN ENGINEER OF RECORD: J.A. BATTS	DATE: 2-20

PLANS PREPARED BY:

SEA
 SIMPSON ENGINEERS & ASSOCIATES
 5640 Dillard Drive
 Suite 200
 Cary, NC 27518
 (919) 852-0468
 (919) 852-0538 (Fax)
 www.simpsonengr.com
 LICENSURE NO. C-2521



STATE OF NORTH CAROLINA DEPARTMENT OF TRANSPORTATION RALEIGH SUBSTRUCTURE					
BENT 1					
REVISIONS					
NO.	BY:	DATE:	NO.	BY:	DATE:
1			3		
2			4		
SHEET NO. S-19					TOTAL SHEETS 26

DOCUMENT NOT CONSIDERED FINAL UNLESS ALL SIGNATURES COMPLETED