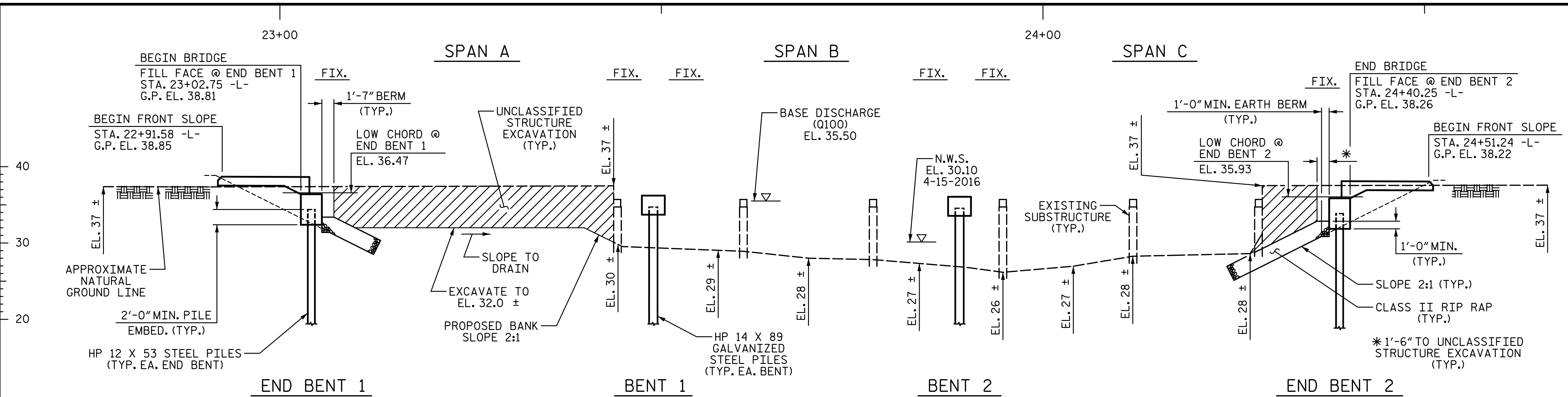
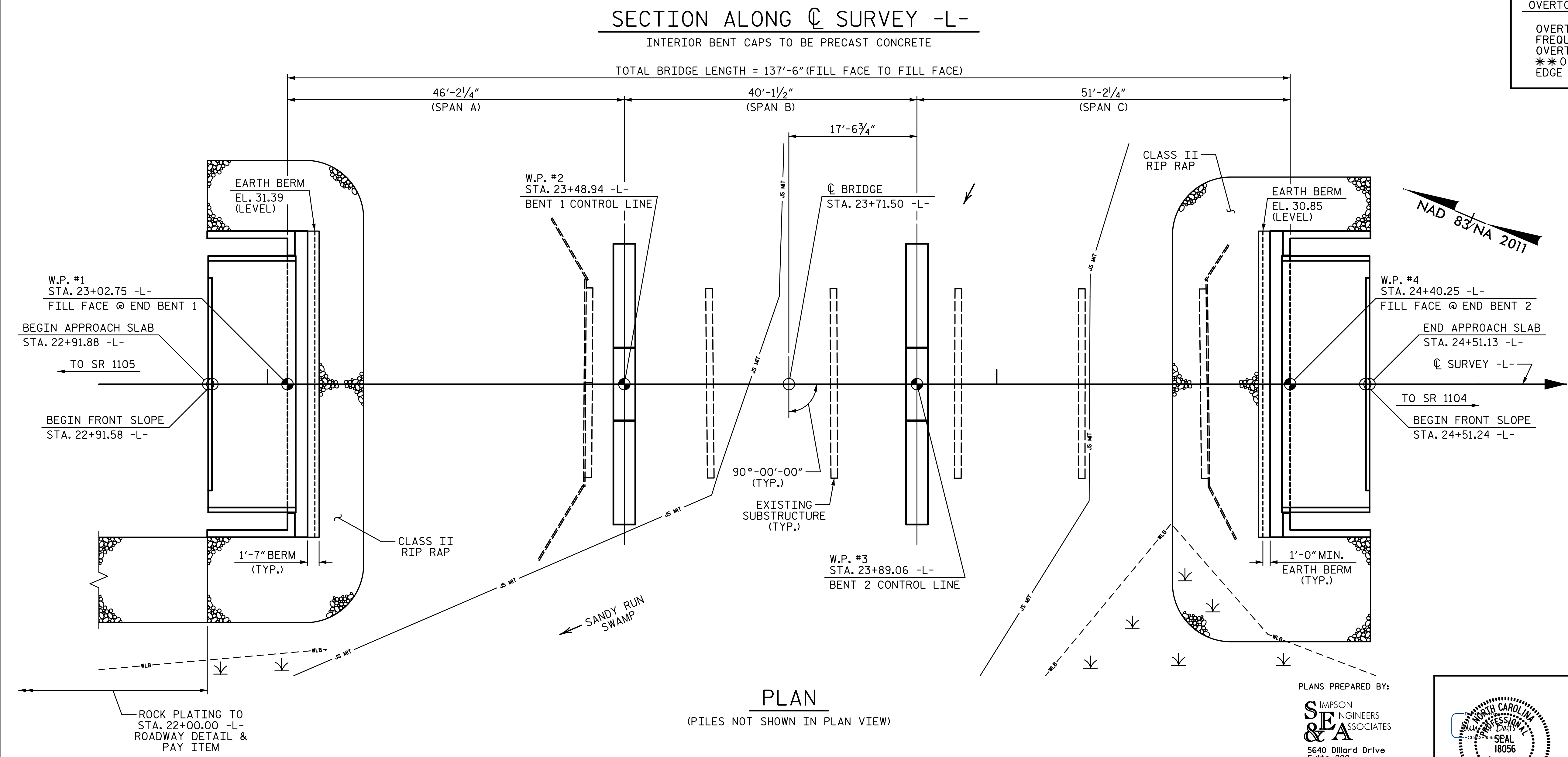


2/20/2020 2:19:45 PM G:\Projects\2018\Division 3 (SEA)\B-5626 (Onslow 31 NC50 over Sandy Run Swamp)\Structures\Drawings\Final\401\_B5626\_SMJ\_GD\_660031.dgn



(+).0.7565%	(-).0.4000%
PVI STA. 21+30.00 EL. = 39.50 VC = 320'	
(-).0.4000%	(+).0.3333%
PVI STA. 26+00.00 EL. = 37.62 VC = 300'	
GRADE DATA -L-	

HYDRAULIC DATA:	
DESIGN DISCHARGE	= 2600 CFS
FREQUENCY OF DESIGN FLOOD	= 50 YEAR
DESIGN HIGH WATER ELEVATION	= 35.0
DRAINAGE AREA	= 17.0 SQ. MI.
BASE DISCHARGE (Q 100)	= 3100 CFS
BASE HIGH WATER ELEVATION	= 35.5
OVERTOPPING FLOOD DATA:	
OVERTOPPING DISCHARGE	= 5500 CFS
FREQUENCY OF OVERTOPPING FLOOD	= 500+ YEAR
OVERTOPPING FLOOD ELEVATION	= 37.5 **
** OVERTOPPING OCCURS AT UPSTREAM EDGE OF PAVEMENT AT STA. 10+75.00 -L- LT.	



I HEREBY CERTIFY THESE PLANS ARE THE AS-BUILT PLANS

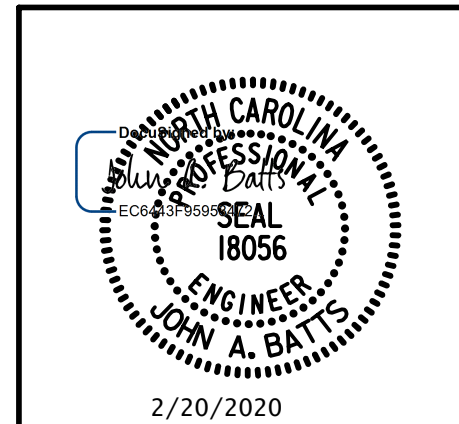
PROJECT NO. B-5626  
 ONSLOW COUNTY  
 STATION: 23+71.50 -L-

SHEET 1 OF 3 REPLACES BRIDGE #660031

STATE OF NORTH CAROLINA  
 DEPARTMENT OF TRANSPORTATION  
 RALEIGH  
**GENERAL DRAWING**  
 BRIDGE ON NC 50  
 OVER SANDY RUN SWAMP  
 BETWEEN SR 1105 AND SR 1104

DRAWN BY: S.D. COOPER	DATE: 2-20
CHECKED BY: J.A. BATTS	DATE: 2-20
DESIGN ENGINEER OF RECORD: J.A. BATTS	DATE: 2-20

PLANS PREPARED BY:  
**SEA & A**  
 IMPSON ENGINEERS ASSOCIATES  
 5640 Dillard Drive  
 Suite 200  
 Cary, NC 27518  
 (919) 852-0468  
 (919) 852-0598 (Fax)  
 www.simpsonengr.com  
 LICENSURE NO. C-2521



**DOCUMENT NOT CONSIDERED FINAL UNLESS ALL SIGNATURES COMPLETED**

REVISIONS						SHEET NO.
NO.	BY:	DATE:	NO.	BY:	DATE:	S-2
1			3			TOTAL SHEETS
2			4			26