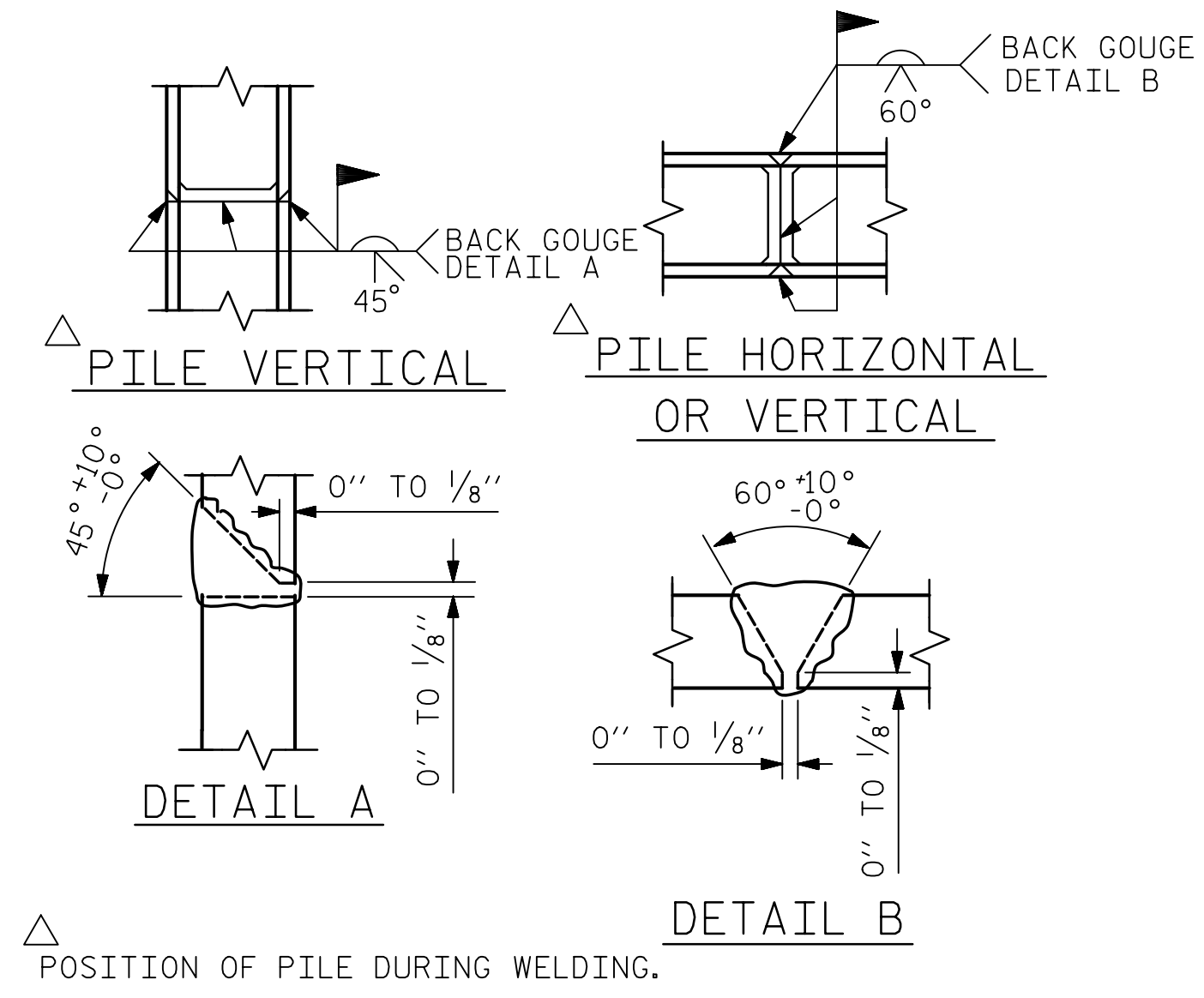


BAGGED STONE AND PIPE SHALL BE PLACED IMMEDIATELY AFTER COMPLETION OF END BENT EXCAVATION. PIPE MAY BE EITHER CONCRETE, CORRUGATED STEEL, CORRUGATED ALUMINUM ALLOY, OR CORRUGATED PLASTIC. PERFORATED PIPE WILL NOT BE ALLOWED.

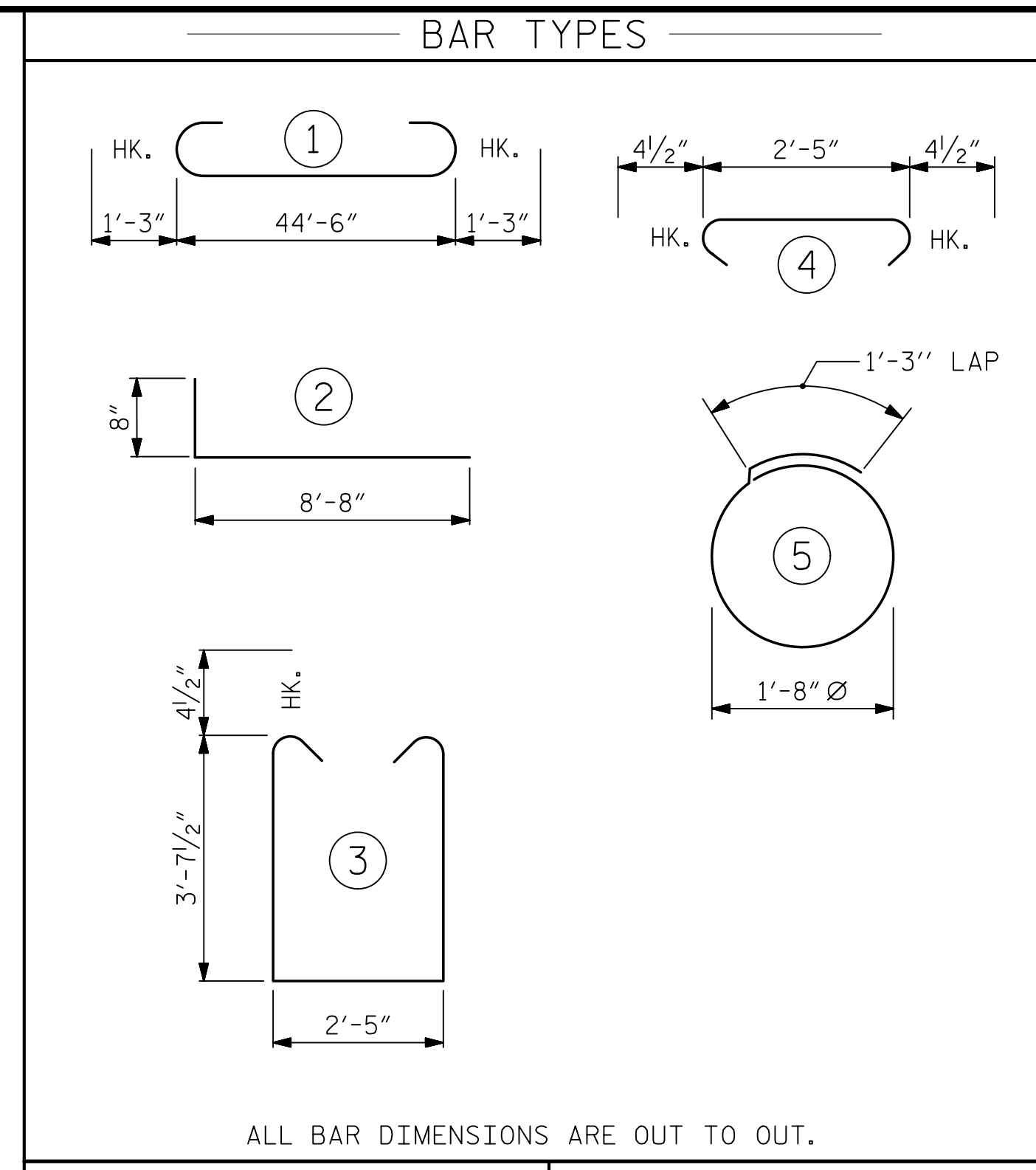
BAGGED STONE SHALL REMAIN IN PLACE UNTIL THE ENGINEER DIRECTS THAT IT BE REMOVED. THE CONTRACTOR SHALL REMOVE AND DISPOSE OF SILT ACCUMULATIONS AT BAGGED STONE WHEN SO DIRECTED BY THE ENGINEER. BAGS SHALL BE REMOVED AND REPLACED WHENEVER THE ENGINEER DETERMINES THAT THEY HAVE DETERIORATED AND LOST THEIR EFFECTIVENESS.

NO SEPARATE PAYMENT WILL BE MADE FOR THIS WORK AND THE ENTIRE COST OF THIS WORK SHALL BE INCLUDED IN THE UNIT CONTRACT PRICE BID FOR THE SEVERAL PAY ITEMS.

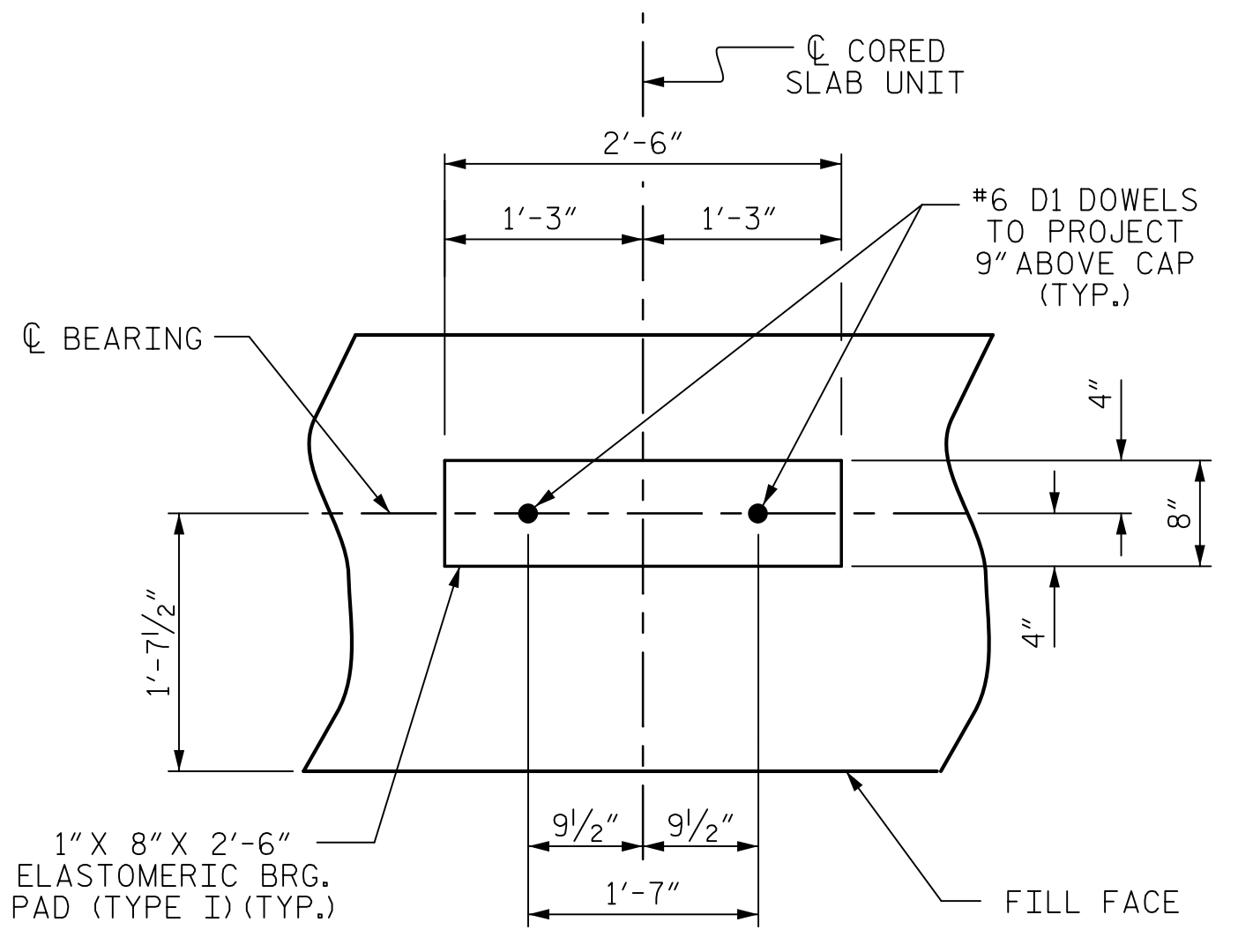
TEMPORARY DRAINAGE AT END BENT



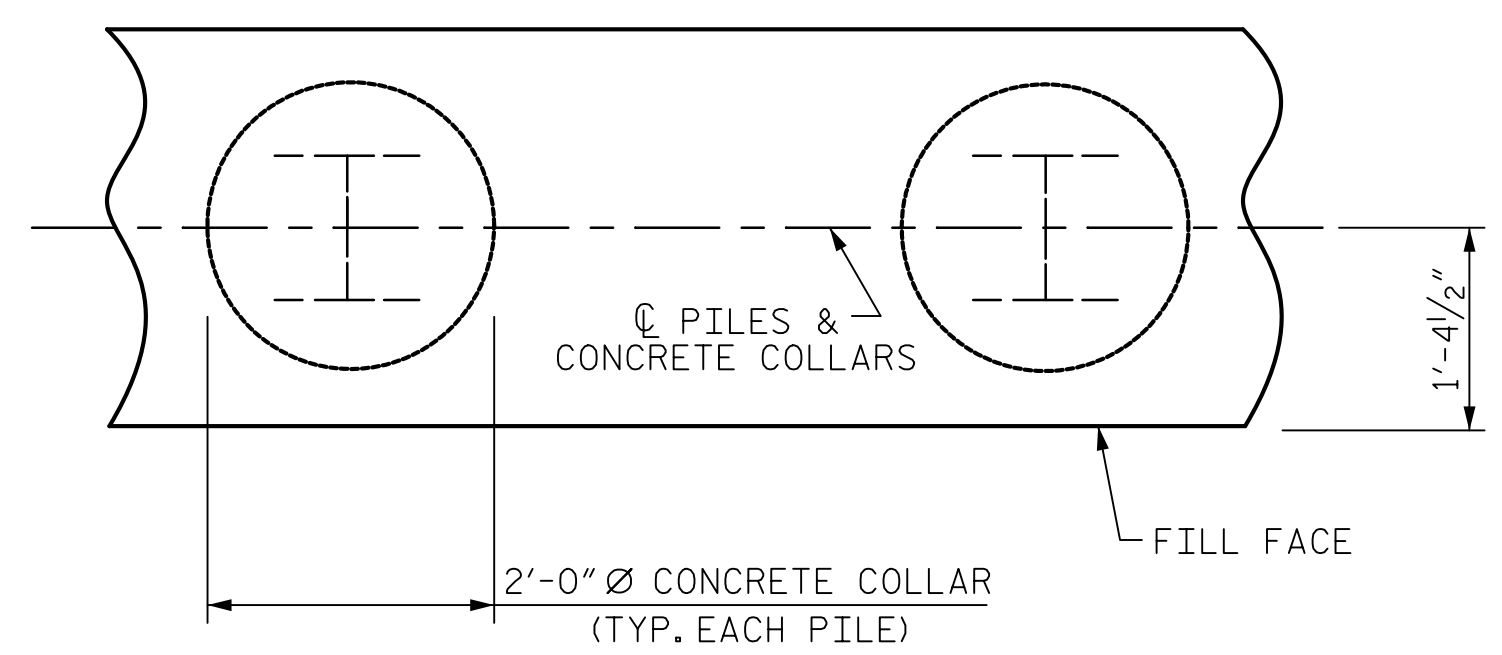
PILE SPLICE DETAILS



BILL OF MATERIAL FOR ONE END BENT					
BAR NO.	NO.	SIZE	TYPE	LENGTH	WEIGHT
B1	8	#9	1	47'-0"	1278
B2	28	#4	STR	23'-7"	441
B3	12	#4	STR	2'-5"	19
D1	26	#6	STR	1'-6"	59
H1	40	#4	2	9'-4"	249
K1	16	#4	STR	2'-11"	31
S1	56	#4	3	10'-5"	390
S2	56	#4	4	3'-2"	118
S3	28	#4	5	6'-6"	122
V1	52	#4	STR	6'-2"	214
REINFORCING STEEL (FOR ONE END BENT)					2921 LBS.
CLASS A CONCRETE BREAKDOWN (FOR ONE END BENT)					
POUR #1 CAP, LOWER PART OF WINGS & COLLARS					21.9 C.Y.
POUR #2 UPPER PART OF WINGS					2.3 C.Y.
TOTAL CLASS A CONCRETE					24.2 C.Y.

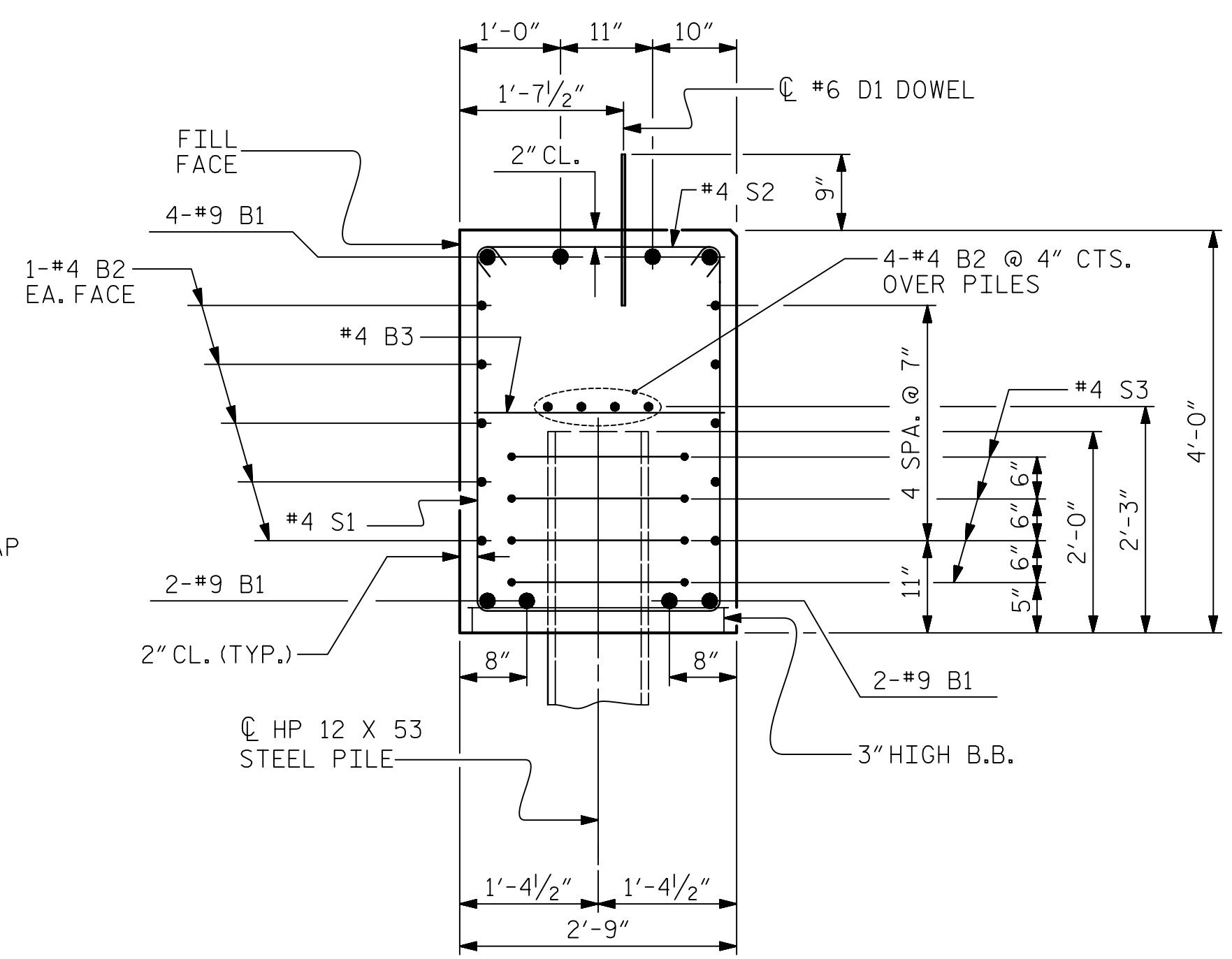
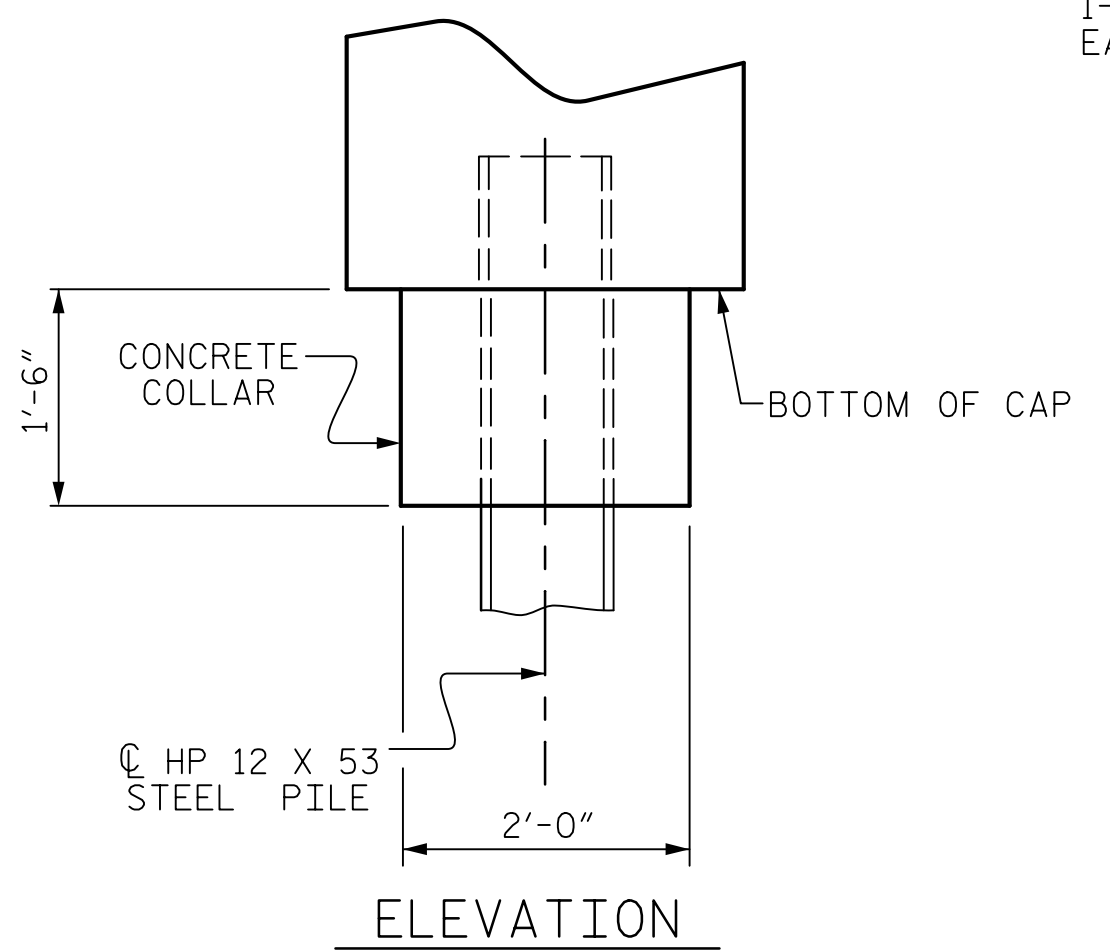


(END BENT No. 1 SHOWN, END BENT No. 2 SIMILAR BY ROTATION)



CORROSION PROTECTION FOR STEEL PILES DETAIL

(END BENT No. 1 SHOWN, END BENT No. 2 SIMILAR BY ROTATION)



(CONCRETE COLLAR NOT SHOWN FOR CLARITY. SEE "CORROSION PROTECTION FOR STEEL PILES DETAIL.")

Mead & Hunt

111 E. Hargett Street
Suite 300
Raleigh, NC 27601
919-714-8670
meahunt.com
NC License No. F-1235

SEAL 043177

ENGINEER

Jack S. Hobson

DocuSigned by: Jack S. Hobson 02/10/2021

PROJECT NO. B-5619

LENOIR COUNTY

STATION: 23+06.50 -L-

SHEET 4 OF 4

STATE OF NORTH CAROLINA

DEPARTMENT OF TRANSPORTATION

RALEIGH

STANDARD

END BENT No. 1 & 2

DETAILS

ASSEMBLED BY :	D.J. CARTE	DATE :	12/09/20
CHECKED BY :	J.S. HOBSON	DATE :	12/28/20
DRAWN BY :	WJH 12/11	REV. :	4/17
CHECKED BY :	AAC 12/11		MAA/THC

REVISIONS				SHEET NO.	
NO.	BY:	DATE:	NO.	BY:	DATE:
1			3		
2			4		
					TOTAL SHEETS
					23