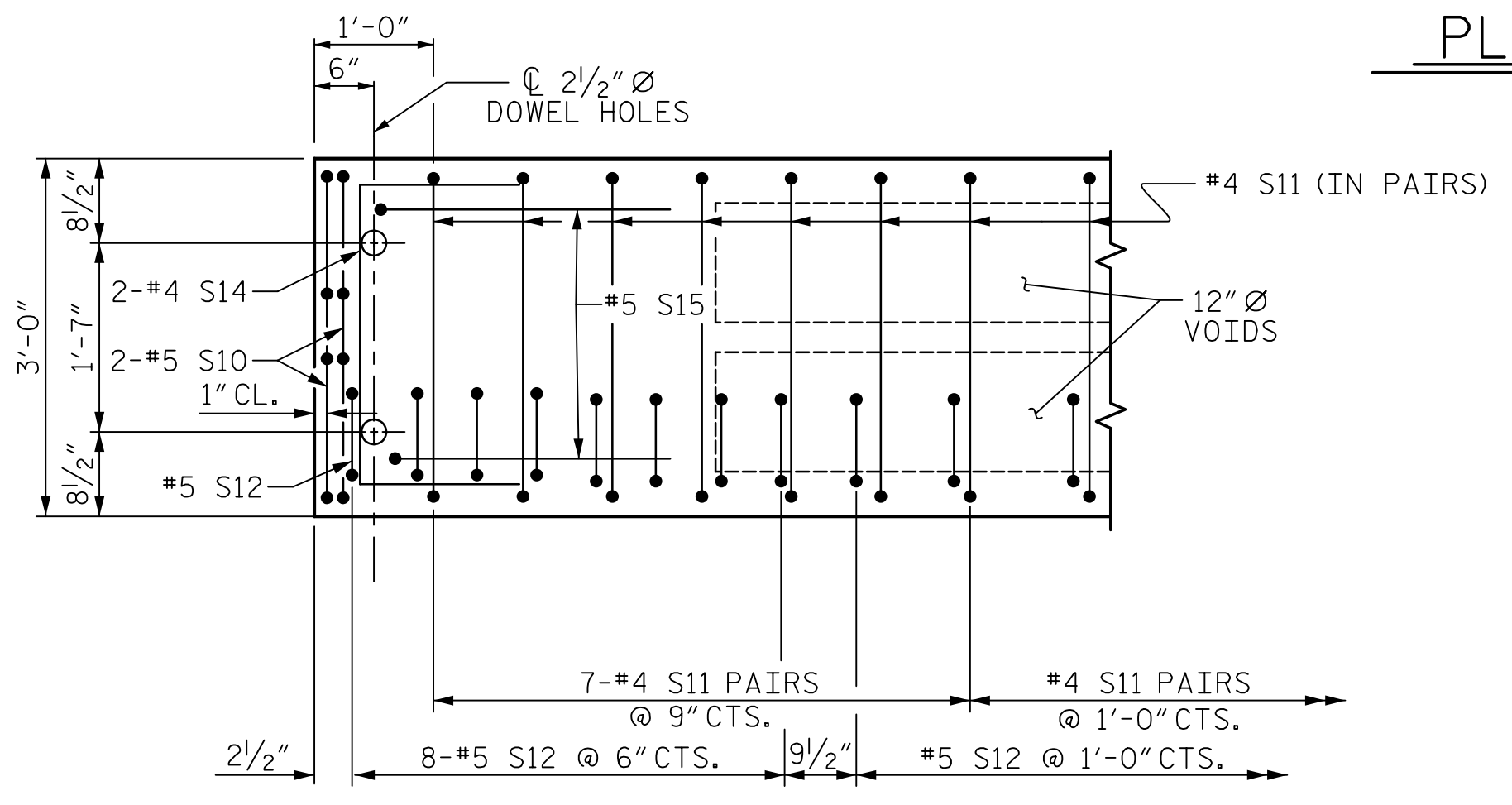
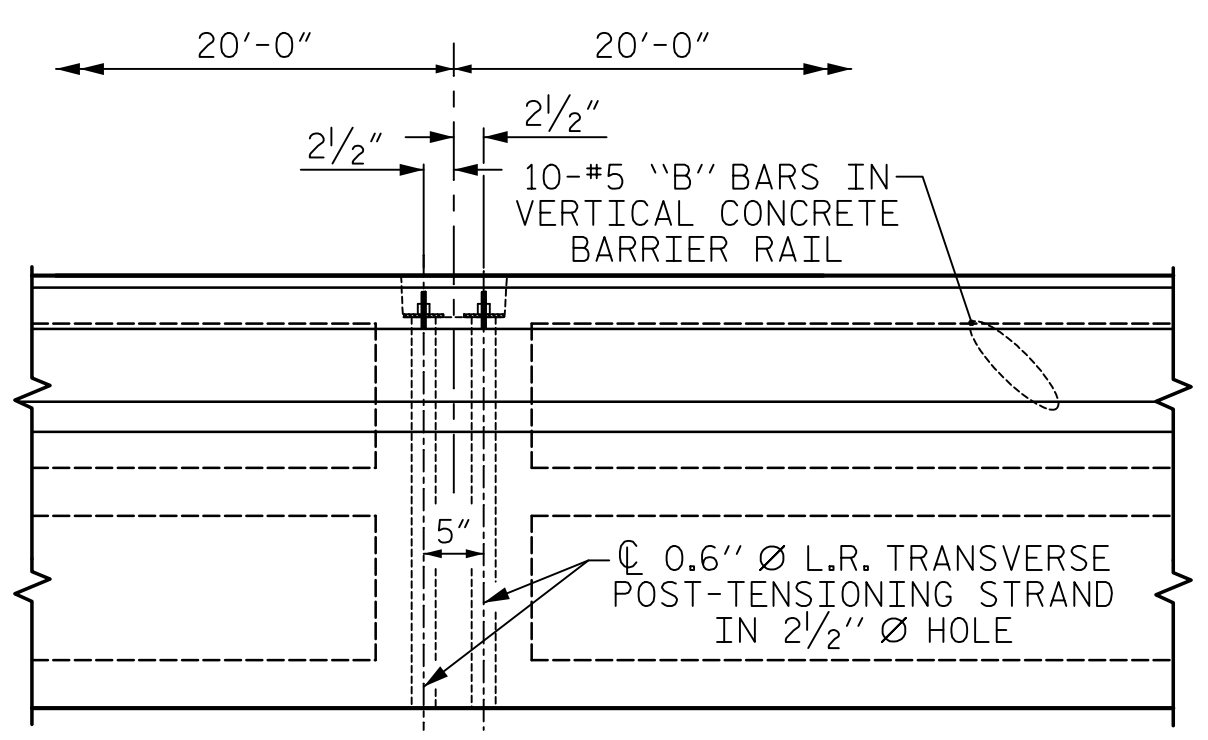


**PLAN OF UNIT**



**DETAIL "A"**



**DETAIL "B"**

#4 S11 BARS MAY BE SHIFTED AS NECESSARY TO MAINTAIN 1" CLEAR TO GROUDED RECESS AND 2 1/2" Ø TRANSVERSE POST-TENSIONING STRAND HOLES

(TYPICAL EACH END OF UNIT)  
NOTE: EXTERIOR UNIT SHOWN - INTERIOR UNIT SIMILAR EXCEPT OMIT #5 S12 BARS.

ASSEMBLED BY : D.J. CARTE	DATE : 12/08/20
CHECKED BY : J.S. HOBSON	DATE : 12/29/20
DRAWN BY : MAA	7/10
CHECKED BY : MKT	8/10
REV. 12/5/11	MAA/AAC
REV. 8/14	MAA/TMG

**Mead & Hunt**  
 111 E. Hargett Street  
 Suite 300  
 Raleigh, NC 27601  
 919-714-8670  
 meadhunt.com  
 NC License No. F-1235

**Jack Hobson**  
 PROFESSIONAL ENGINEER  
 SEAL 043177  
 02/10/2021

PROJECT NO. B-5619  
LENOIR COUNTY  
 STATION: 23+06.50 -L-  
 SHEET 3 OF 5

STATE OF NORTH CAROLINA  
 DEPARTMENT OF TRANSPORTATION  
 RALEIGH  
 STANDARD  
 PLAN OF 60' UNIT  
 36'-10" CLEAR ROADWAY  
 90° SKEW  
 SPAN B

REVISIONS						SHEET NO.
NO.	BY:	DATE:	NO.	BY:	DATE:	S2-07
1			3			TOTAL SHEETS
2			4			23