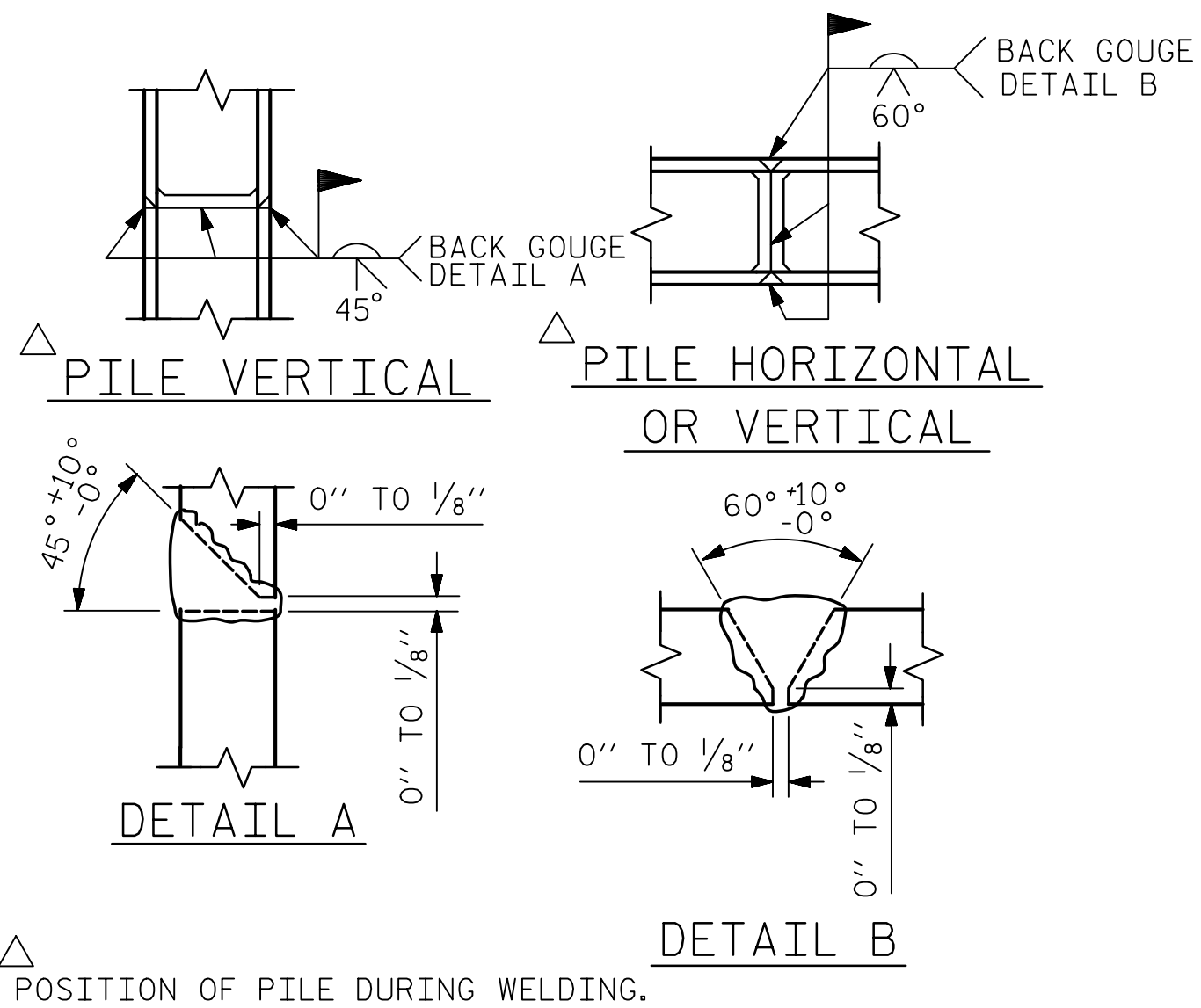


BAGGED STONE AND PIPE SHALL BE PLACED IMMEDIATELY AFTER COMPLETION OF END BENT EXCAVATION. PIPE MAY BE EITHER CONCRETE, CORRUGATED STEEL, CORRUGATED ALUMINUM ALLOY, OR CORRUGATED PLASTIC. PERFORATED PIPE WILL NOT BE ALLOWED.

BAGGED STONE SHALL REMAIN IN PLACE UNTIL THE ENGINEER DIRECTS THAT IT BE REMOVED. THE CONTRACTOR SHALL REMOVE AND DISPOSE OF SILT ACCUMULATIONS AT BAGGED STONE WHEN SO DIRECTED BY THE ENGINEER. BAGS SHALL BE REMOVED AND REPLACED WHENEVER THE ENGINEER DETERMINES THAT THEY HAVE DETEIORATED AND LOST THEIR EFFECTIVENESS.

NO SEPARATE PAYMENT WILL BE MADE FOR THIS WORK AND THE ENTIRE COST OF THIS WORK SHALL BE INCLUDED IN THE UNIT CONTRACT PRICE BID FOR THE SEVERAL PAY ITEMS.

TEMPORARY DRAINAGE AT END BENT



PILE SPLICE DETAILS

BAR TYPES

1: 43'-9" length, 1'-3" HK, 1'-3" HK

2: 10'-6" length, 10' height

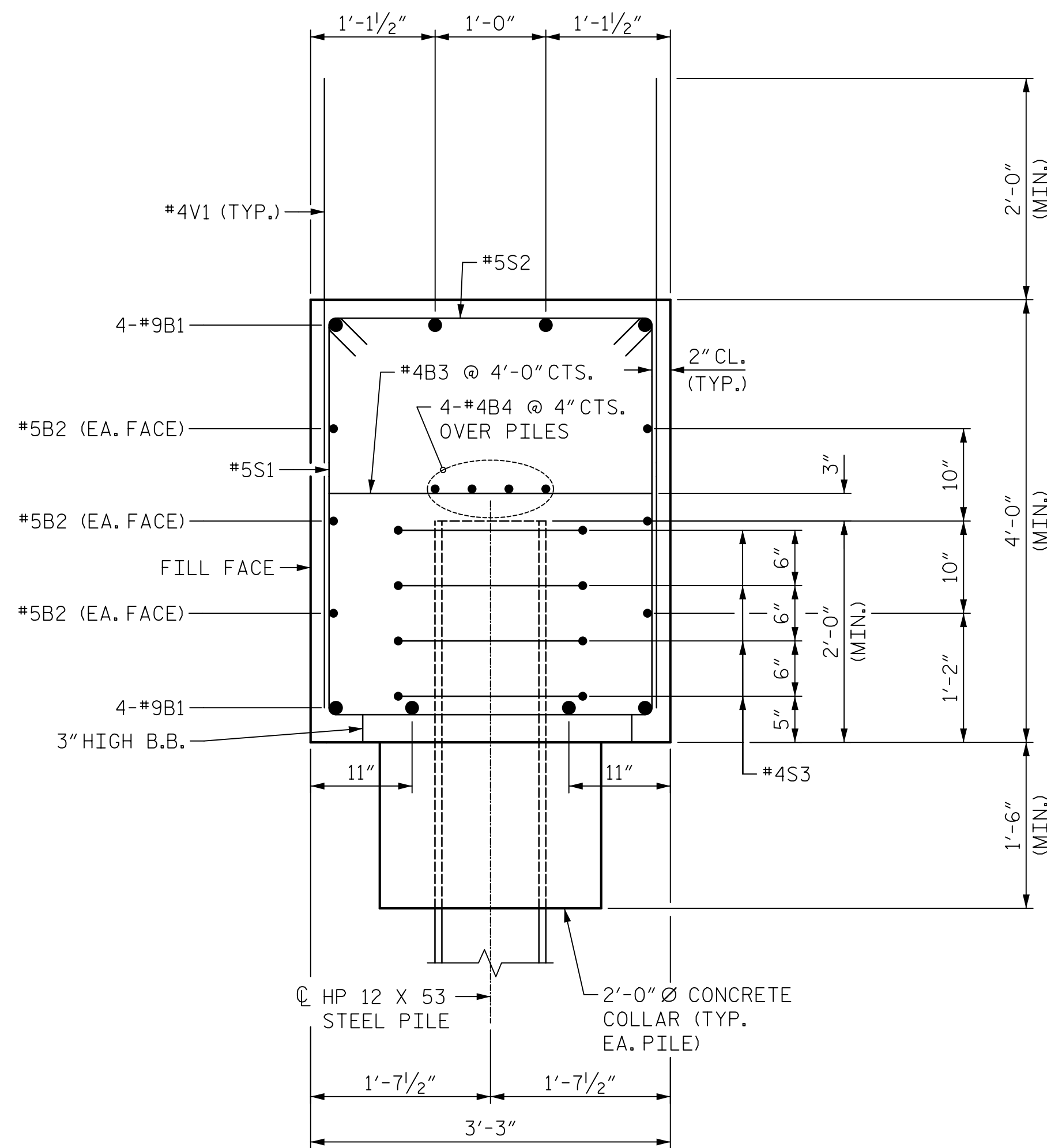
3: 2'-11" width, 3'-7 1/2" height, 5/2" HK

4: 2'-11" length, 5/2" HK, 5/2" HK

5: 1'-8" diameter, 1'-3" LAP

ALL BAR DIMENSIONS ARE OUT TO OUT.

BILL OF MATERIAL					
END BENT #2					
BAR NO.	NO.	SIZE	TYPE	LENGTH	WEIGHT
B1	8	#9		46'-3"	1258
B2	6	#5	STR	43'-11"	275
B3	11	#4	STR	2'-11"	21
B4	8	#4	STR	23'-2"	124
H1	52	#5		11'-4"	615
K1	28	#4	STR	3'-7"	67
S1	76	#5		11'-1"	879
S2	76	#5		3'-10"	304
S3	28	#4		6'-6"	122
V1	60	#4	STR	5'-9"	230
V2	64	#4	STR	8'-1"	346
REINFORCING STEEL					4,241 LBS.
CLASS A CONCRETE BREAKDOWN					
POUR #1 CAP, LOWER PART OF WINGS & COLLARS					26.0 C.Y.
POUR #2 UPPER PART OF WINGS					4.4 C.Y.
TOTAL CLASS A CONCRETE					30.4 C.Y.
HP 12 X 53 STEEL PILES NO. 7					LIN. FT. = 539
PILE DRIVING EQUIPMENT SETUP FOR HP 12 X 53 STEEL PILES					NO: 7
PILE REDRIVES					EA: 4



SECTION A-A

DRAWN BY : D.J. CARTE DATE : 11/12/20
 CHECKED BY : J.S. HOBSON DATE : 12/04/20
 DESIGN ENGINEER OF RECORD : J.S. HOBSON DATE : 02/09/21



111 E. Hargett Street
 Suite 300
 Raleigh, NC 27601
 919-714-8670
 meadhunt.com
 NC License No. F-1235



Jack Hobson 02/10/2021

DOCUMENT NOT CONSIDERED FINAL UNLESS ALL SIGNATURES COMPLETED

PROJECT NO. B-5619
 LENOIR COUNTY
 STATION: 30+80.00 -L-

SHEET 3 OF 3

STATE OF NORTH CAROLINA
 DEPARTMENT OF TRANSPORTATION
 RALEIGH
 SUBSTRUCTURE

END BENT 2

REVISIONS

NO.	BY:	DATE:	NO.	BY:	DATE:	SHEET NO.
1			3			S1-37
2			4			TOTAL SHEETS 40