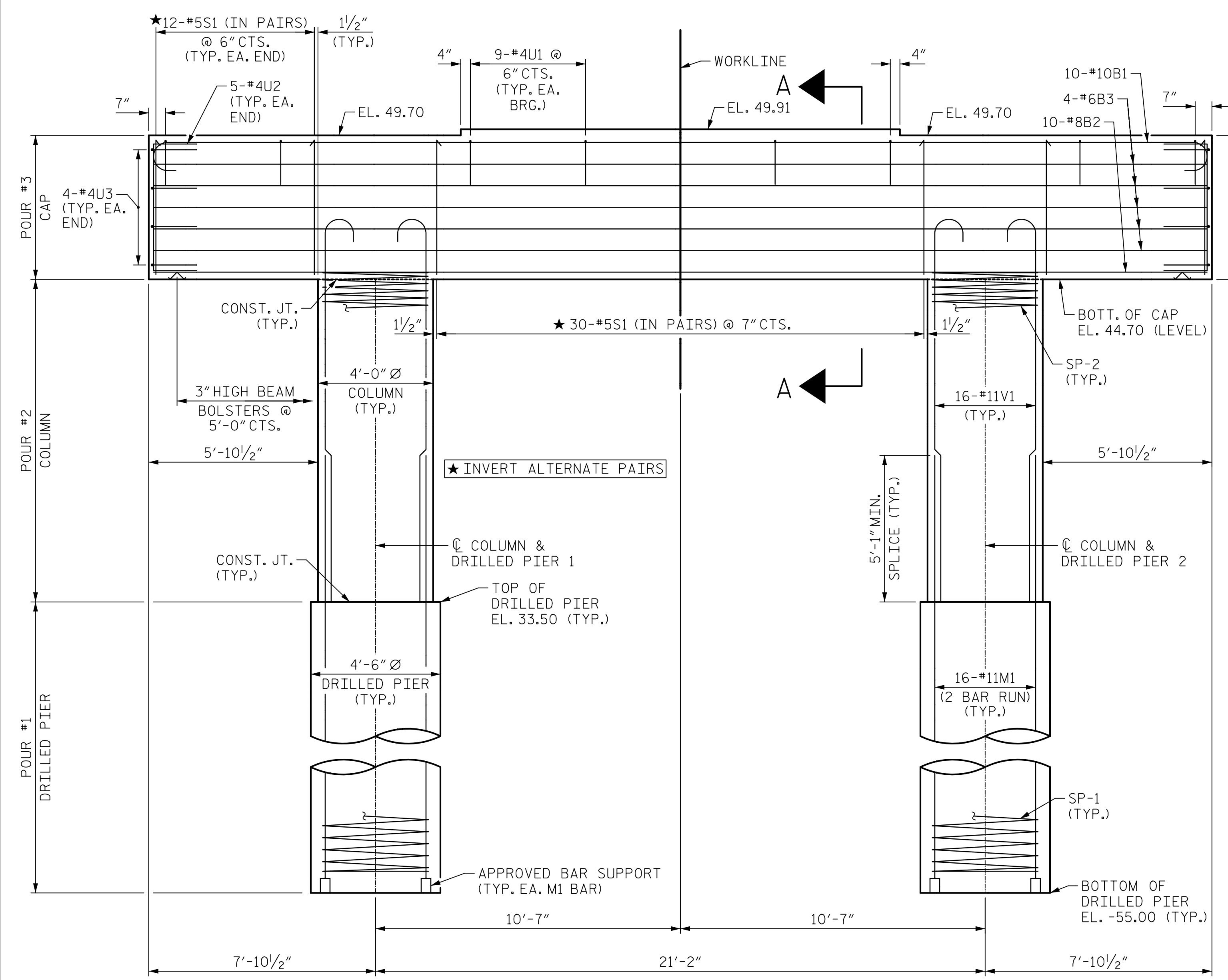
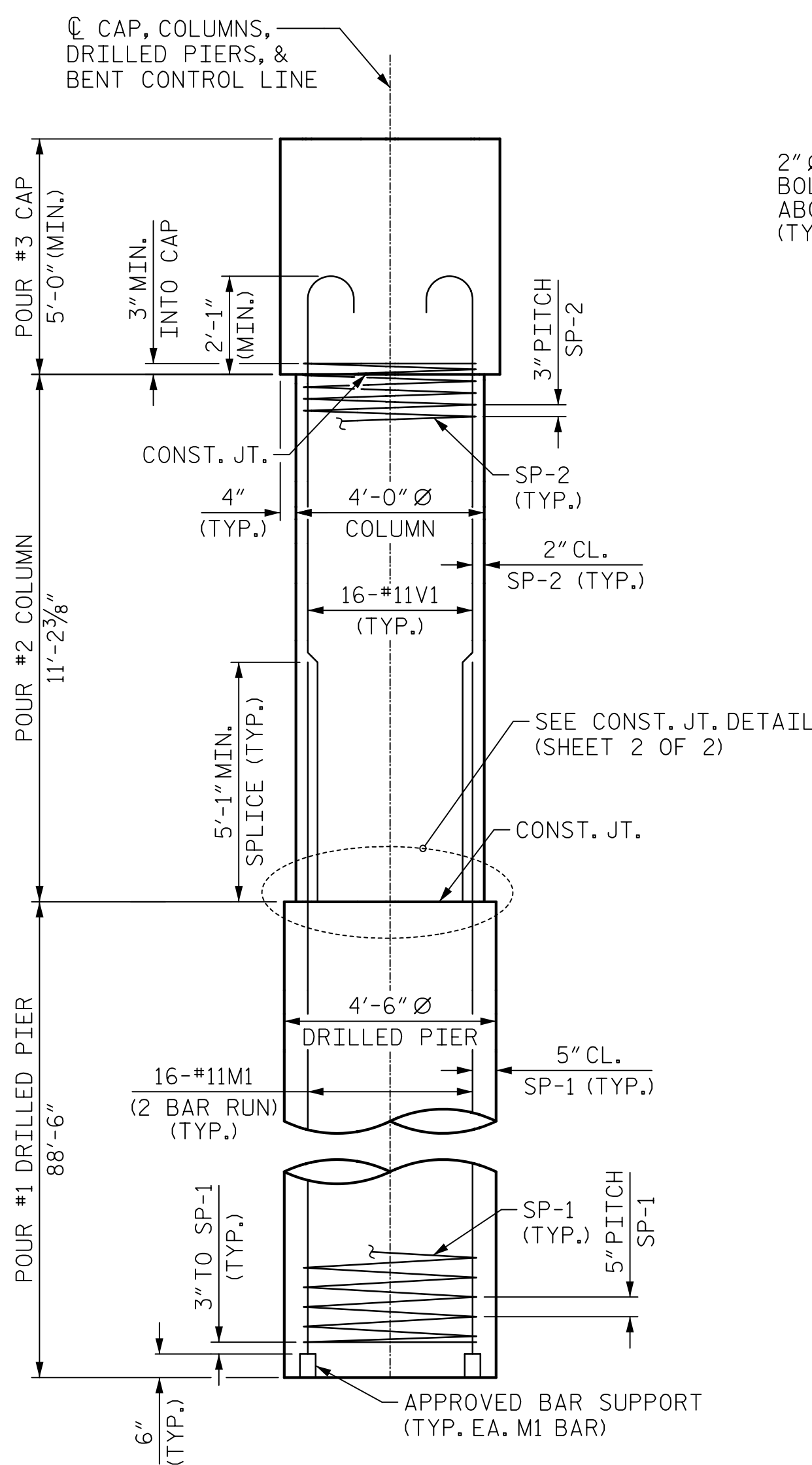


PLAN



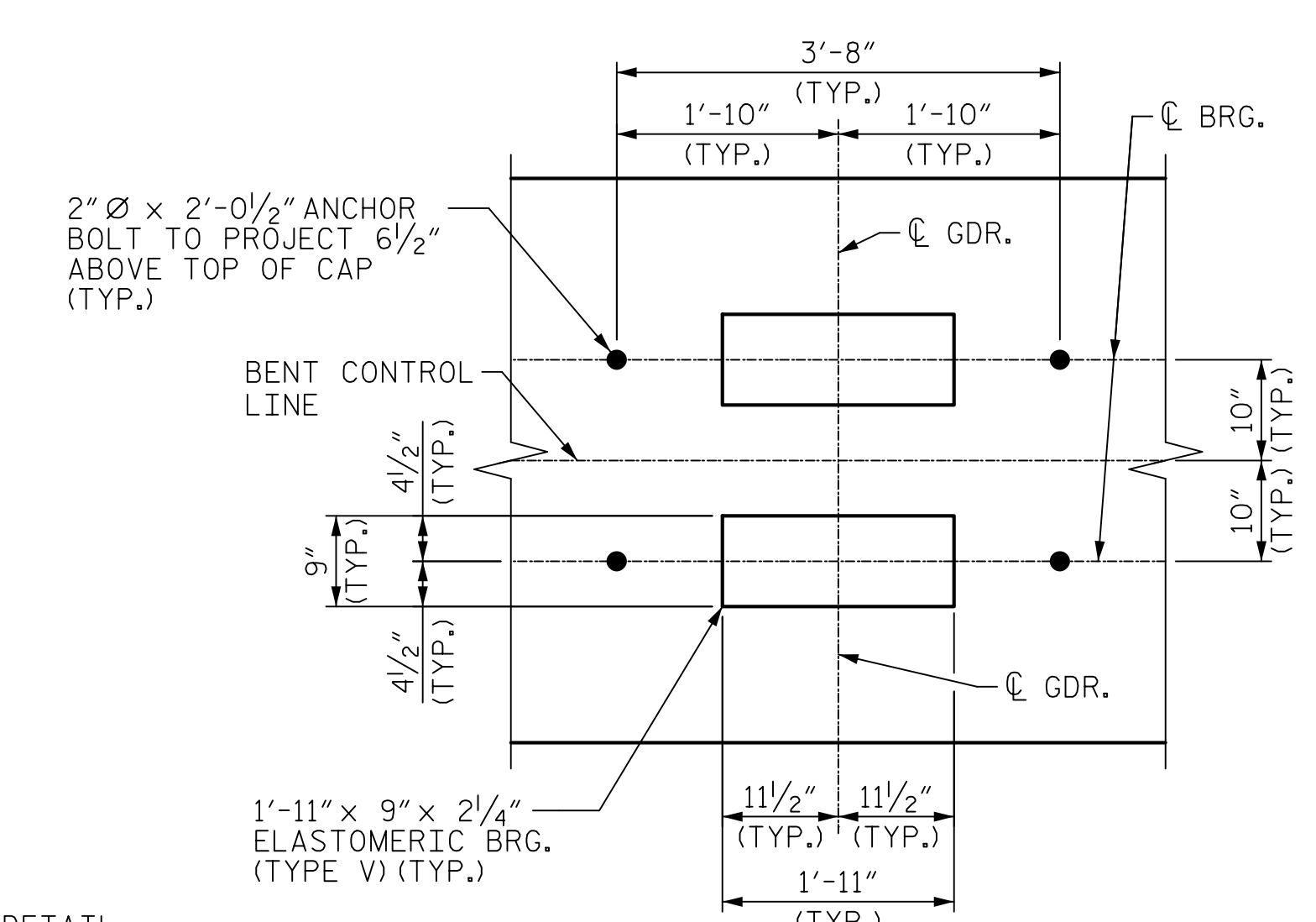
ELEVATION



END ELEVATION

NOTES

- STIRRUPS AND #4U1 BARS IN CAP MAY BE SHIFTED AS NECESSARY TO CLEAR ANCHOR BOLTS.
- HOOKS ON "V" BARS MAY BE TURNED AS NECESSARY FOR PLACING REINFORCING STEEL.
- ALL STEEL IN THE DRILLED PIERS IS INCLUDED IN THE PAY ITEMS FOR "REINFORCING STEEL" AND "SPIRAL COLUMN REINFORCING STEEL."
- THE CONTRACTOR'S ATTENTION IS CALLED TO THE FACT THAT THE LONGITUDINAL REINFORCEMENT FOR DRILLED PIERS IS DETAILED WITH 3 FEET OF EXTRA LENGTH.
- THE LOCATION OF THE CONSTRUCTION JOINT IN THE DRILLED PIERS IS BASED ON AN APPROXIMATE GROUND LINE ELEVATION. IF THE CONSTRUCTION JOINT IS ABOVE THE ACTUAL GROUND LINE ELEVATION, THE CONTRACTOR SHALL PLACE THE CONSTRUCTION JOINT ONE FOOT BELOW THE GROUND LINE.



DETAIL "A"  
(TYPICAL AT EACH BEARING)

**Mead & Hunt**  
111 E. Hargett Street  
Suite 300  
Raleigh, NC 27601  
919-714-8670  
meadhunt.com  
NC License No. F-1235



PROJECT NO. B-5619  
LENOIR COUNTY  
STATION: 30+80.00 -L-  
SHEET 1 OF 2

STATE OF NORTH CAROLINA DEPARTMENT OF TRANSPORTATION RALEIGH SUBSTRUCTURE					
BENT 4					
REVISIONS					
NO.	BY:	DATE:	NO.	BY:	DATE:
1			3		
2			4		
SHEET NO.					S1-33
TOTAL SHEETS					40

DRAWN BY : J.S. HOBSON DATE : 10/22/20  
CHECKED BY : J.A. BOYER DATE : 12/10/20  
DESIGN ENGINEER OF RECORD : J.S. HOBSON DATE : 02/09/21

DOCUMENT NOT CONSIDERED  
FINAL UNLESS ALL  
SIGNATURES COMPLETED