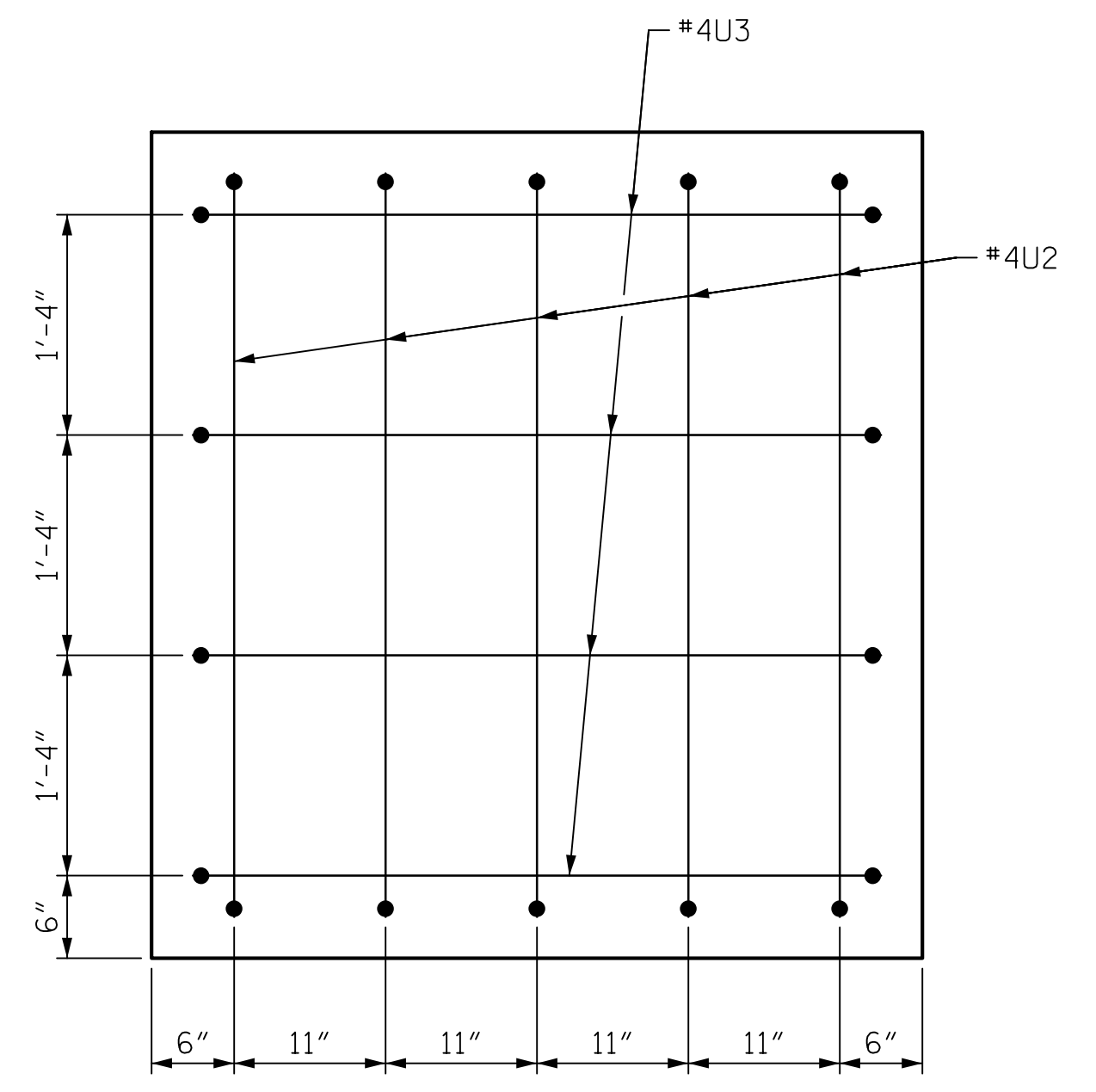
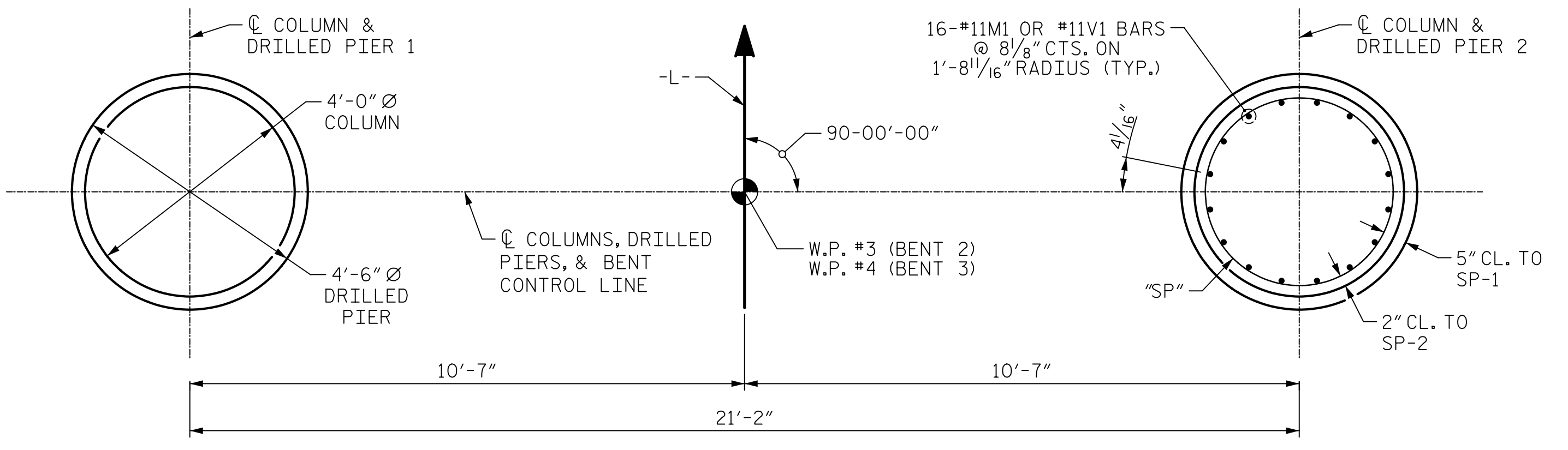


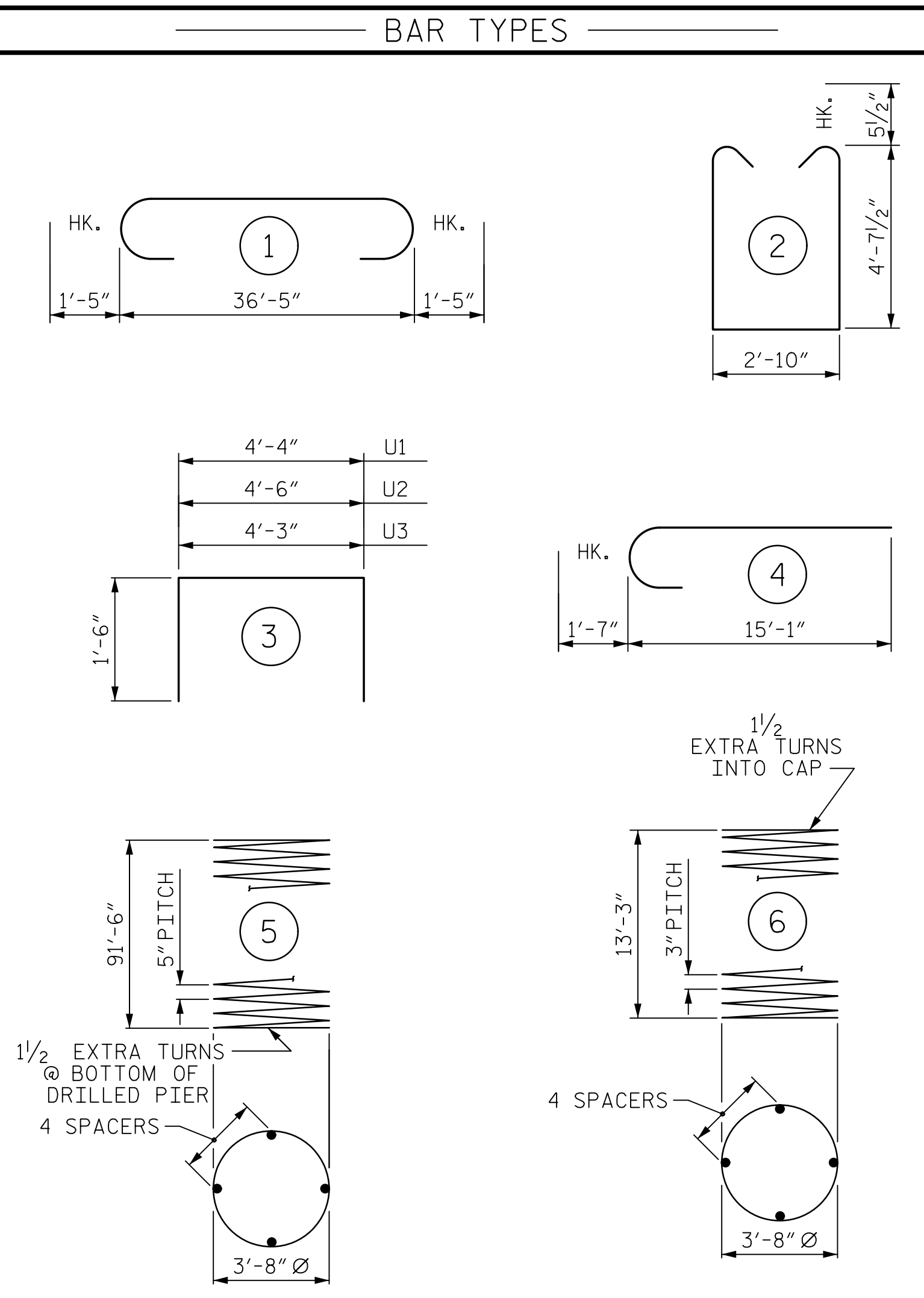
SECTION A-A
* INVERT ALTERNATE STIRRUPS



END VIEW
(TYPICAL BOTH ENDS)

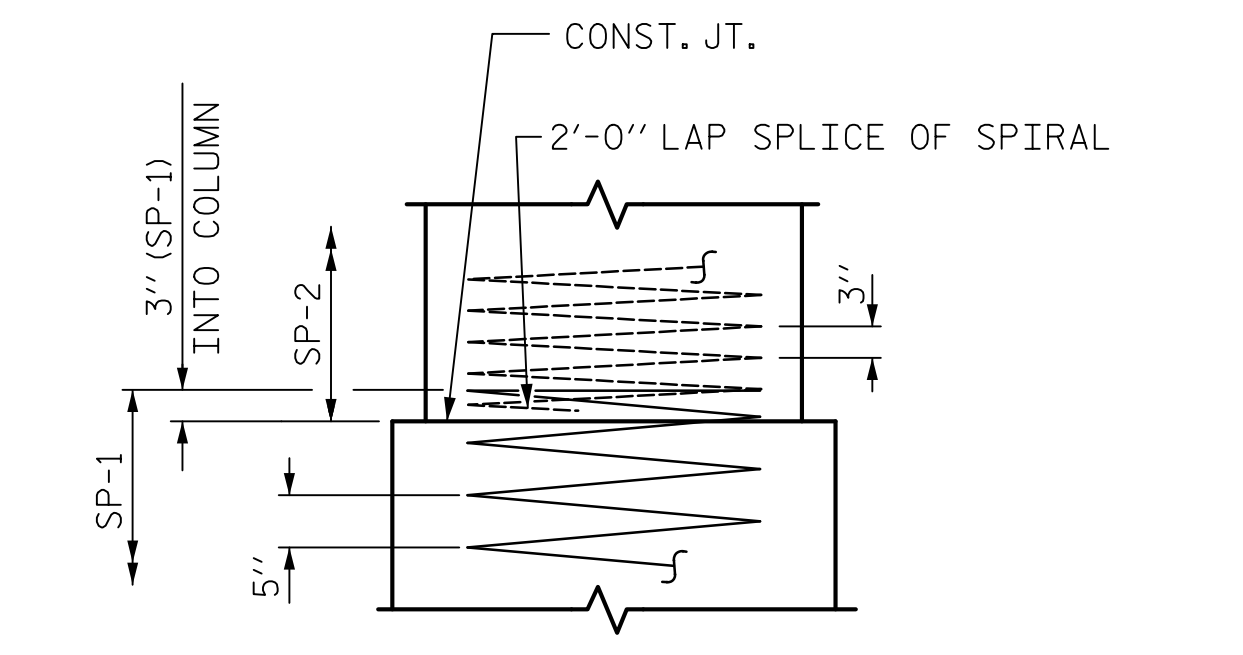


PLAN OF DRILLED PIERS & COLUMNS
(DIMENSIONS AND REINFORCING STEEL ARE TYPICAL FOR EACH COLUMN AND DRILLED PIER)



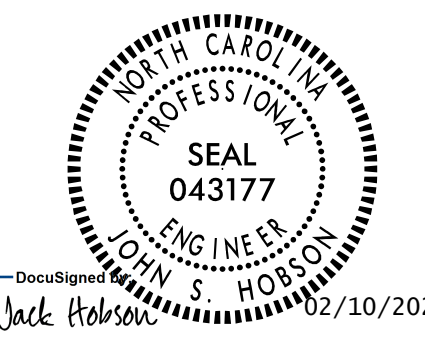
ALL BAR DIMENSIONS ARE OUT TO OUT

BILL OF MATERIAL					
FOR ONE BENT					
BAR	NO.	SIZE	TYPE	LENGTH	WEIGHT
B1	10	#10	1	39'-3"	1689
B2	10	#8	STR	36'-7"	977
B3	20	#6	STR	36'-7"	1099
M1	64	#11	STR	52'-4"	17795
S1	108	#5	2	13'-0"	1464
U1	36	#4	3	7'-4"	176
U2	10	#4	3	7'-6"	50
U3	8	#4	3	7'-3"	39
V1	32	#11	4	16'-8"	2834
REINFORCING STEEL					26123 LBS.
SP-1	2	*	5	2516'-11"	5250
SP-2	2	**	6	620'-10"	829
SPIRAL COLUMN REINFORCING STEEL					6079 LBS.
* THE SP-1 SPIRAL REINFORCING STEEL SHALL BE W31 OR D-31 COLD DRAWN WIRE OR #5 PLAIN OR DEFORMED BAR					
** THE SP-2 SPIRAL REINFORCING STEEL SHALL BE W20 OR D-20 COLD DRAWN WIRE OR #4 PLAIN OR DEFORMED BAR					
CLASS A CONCRETE BREAKDOWN					
POUR #2 (COLUMNS)					12.0 C.Y.
POUR #3 (CAP)					32.5 C.Y.
TOTAL CLASS A CONCRETE					44.5 C.Y.
DRILLED PIERS:					
DRILLED PIER CONCRETE POUR #1 (DRILLED PIERS)					108.4 C.Y.
4'-6" Ø DRILLED PIERS					184.0 LIN. FT.
PERMANENT STEEL CASING FOR 4'-6" Ø DRILLED PIER					44.0 LIN. FT.
CSL TUBES					748.0 LIN. FT.
CSL TESTING					1 EA.



CONSTRUCTION JOINT DETAIL

Mead & Hunt
111 E. Hargett Street
Suite 300
Raleigh, NC 27601
919-714-8670
meadhunt.com
NC License No. F-1235



PROJECT NO. B-5619
LENOIR COUNTY
STATION: 30+80.00 -L-
SHEET 2 OF 2

STATE OF NORTH CAROLINA
DEPARTMENT OF TRANSPORTATION
RALEIGH
SUBSTRUCTURE
BENTS 2 & 3

DRAWN BY : J.S. HOBSON DATE : 10/22/20
CHECKED BY : J.A. BOYER DATE : 12/10/20
DESIGN ENGINEER OF RECORD : J.S. HOBSON DATE : 02/09/21

DOCUMENT NOT CONSIDERED FINAL UNLESS ALL SIGNATURES COMPLETED

REVISIONS						SHEET NO.
NO.	BY:	DATE:	NO.	BY:	DATE:	S1-32
1			3			TOTAL SHEETS
2			4			40