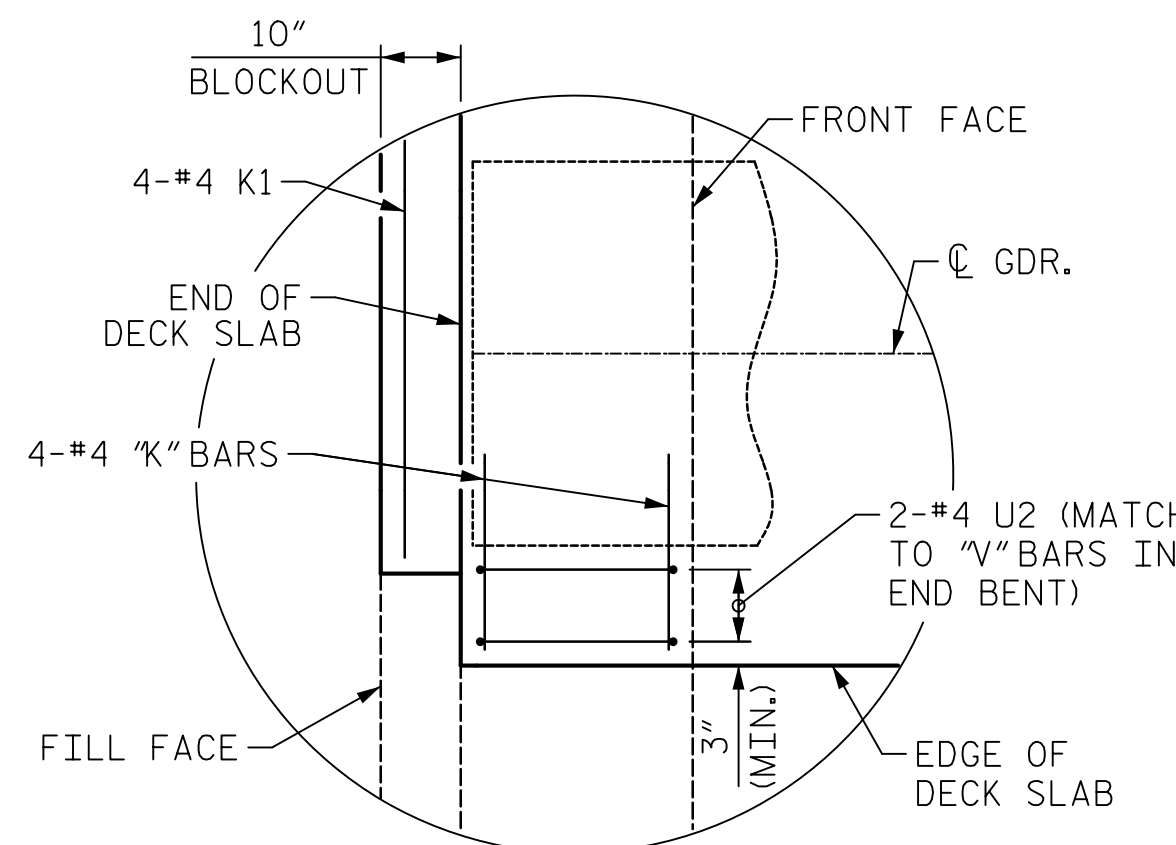


**SPAN A**



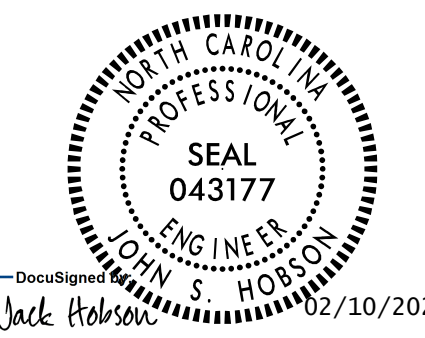
**DETAIL "A"**  
(SHOWING REINFORCEMENT IN INTEGRAL END BENT)  
(TYPICAL EACH END)

**NOTES**

FOR POUR SEQUENCE AND LOCATION OF TRANSVERSE CONSTRUCTION JOINTS, SEE 'BILL OF MATERIALS' SHEET.



111 E. Hargett Street  
Suite 300  
Raleigh, NC 27601  
919-714-8670  
meadhunt.com  
NC License No. F-1235



DOCUMENT NOT CONSIDERED  
FINAL UNLESS ALL  
SIGNATURES COMPLETED

PROJECT NO. B-5619

LENOIR COUNTY

STATION: 30+80.00 -L-

SHEET 1 OF 5

STATE OF NORTH CAROLINA  
DEPARTMENT OF TRANSPORTATION  
RALEIGH  
SUPERSTRUCTURE  
**PLAN OF SPANS**

DRAWN BY : J.S. HOBSON DATE : 11/05/20  
CHECKED BY : J.A. LEE DATE : 12/07/20  
DESIGN ENGINEER OF RECORD : J.S. HOBSON DATE : 02/09/21

| REVISIONS |     |       |     |     |       | SHEET NO.    |
|-----------|-----|-------|-----|-----|-------|--------------|
| NO.       | BY: | DATE: | NO. | BY: | DATE: | S1-08        |
| 1         |     |       | 3   |     |       | TOTAL SHEETS |
| 2         |     |       | 4   |     |       | 40           |