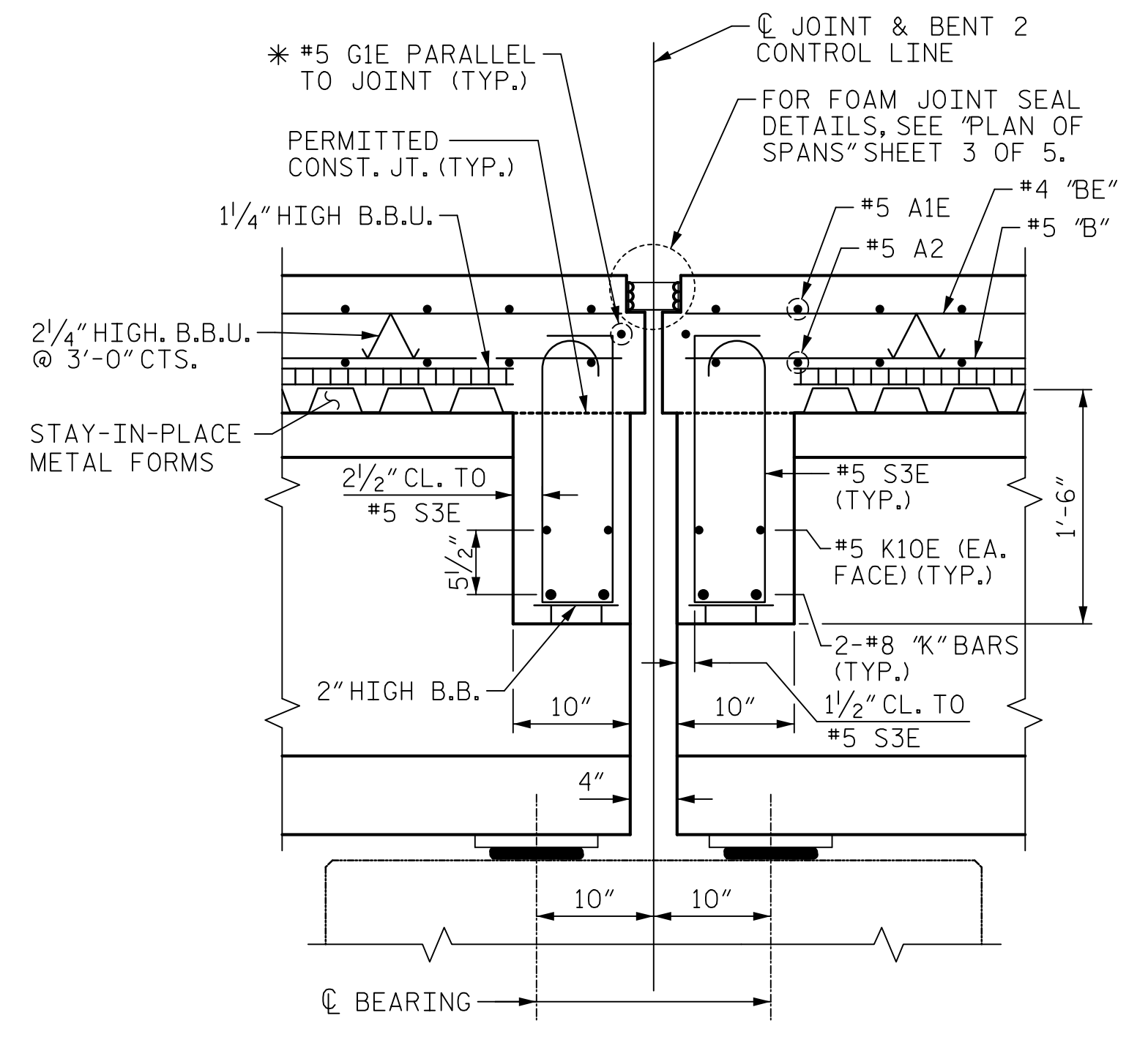
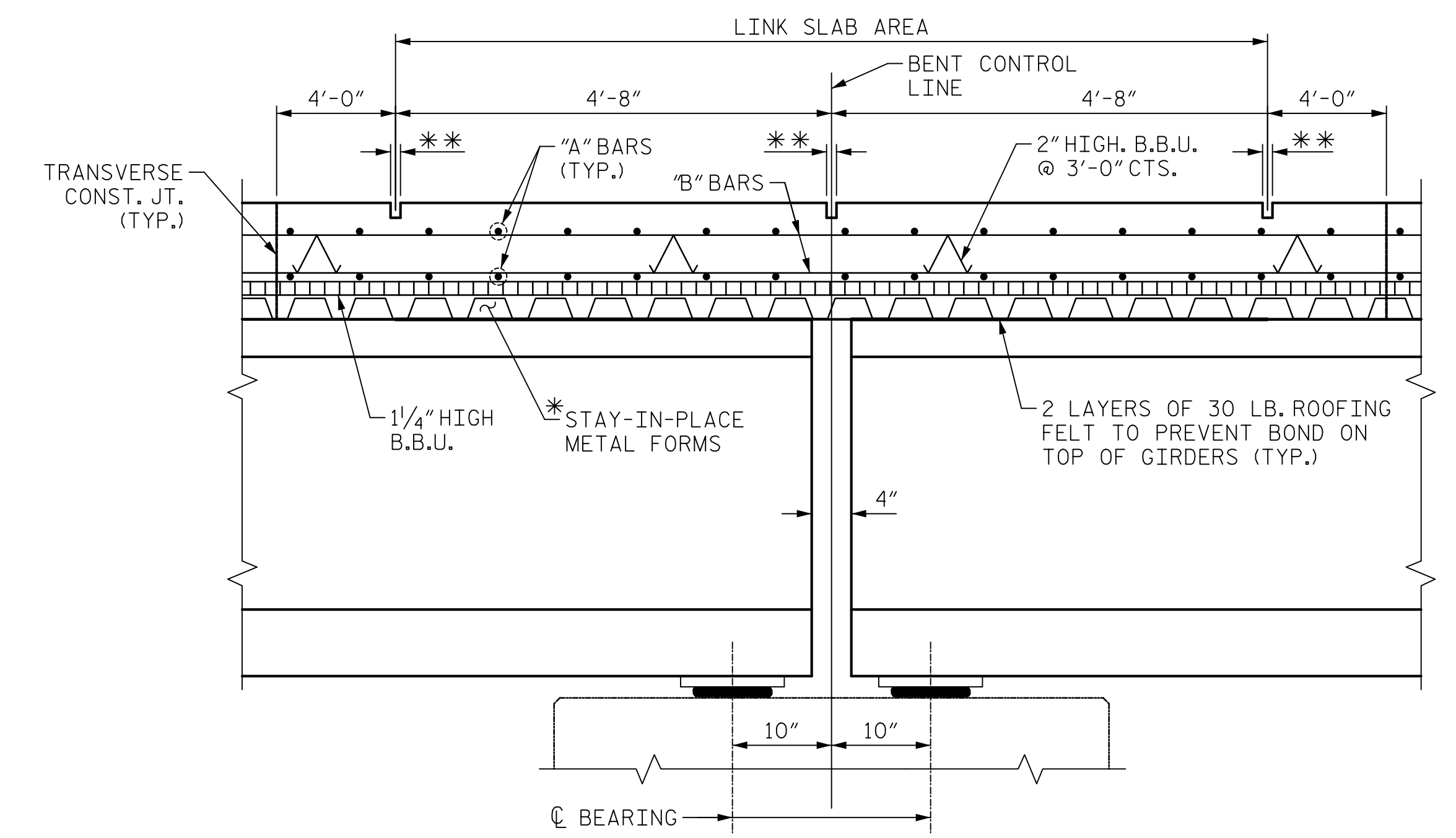


SECTION THROUGH END BENT DIAPHRAGM
(END BENT 1 SHOWN, END BENT 2 SIMILAR)



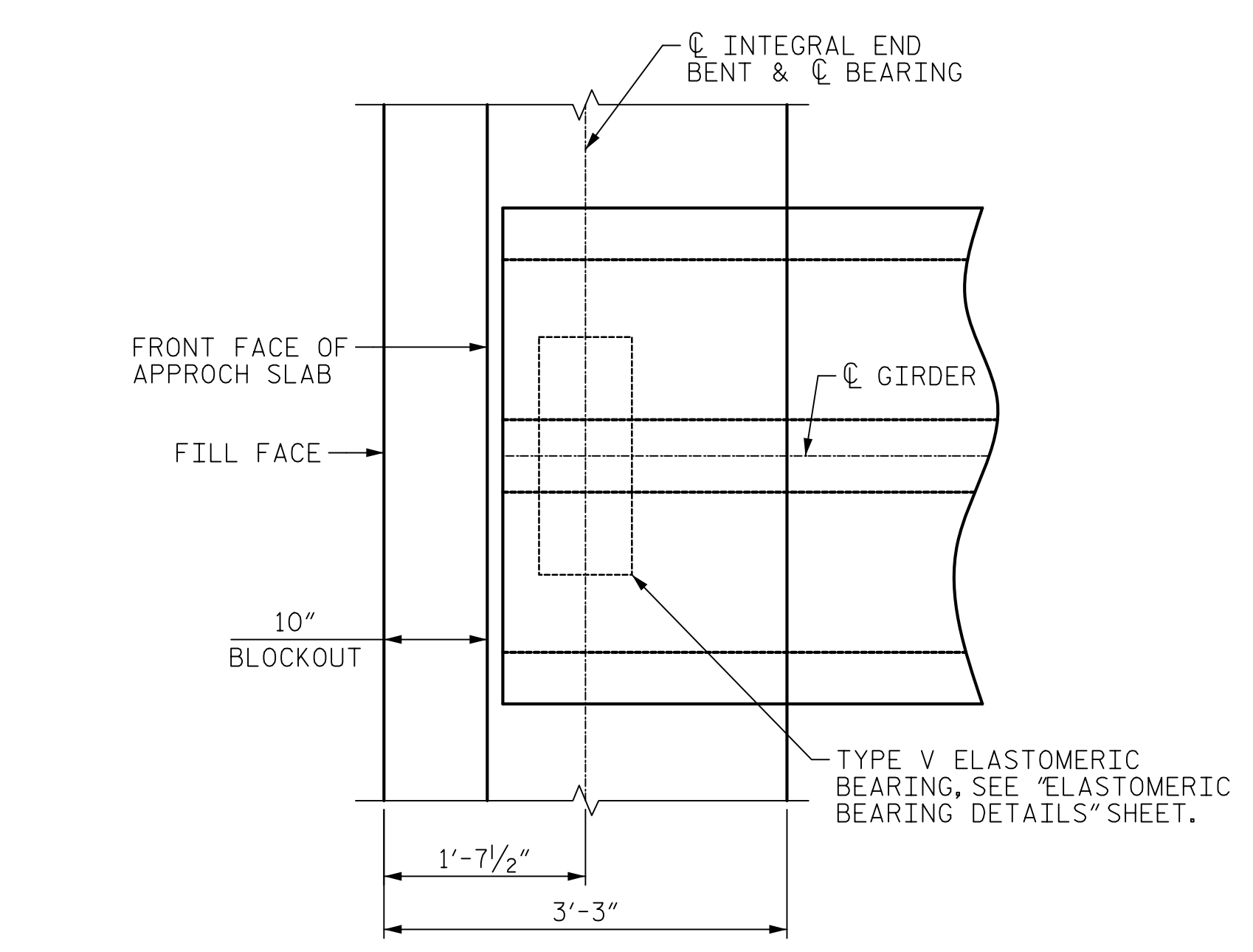
SECTION THROUGH EXP. BENT DIAPHRAGM
(BENT 2)

* #5 G1E BAR MAY BE SHIFTED SLIGHTLY, AS NECESSARY, TO CLEAR REINFORCING STEEL AND STIRRUPS.

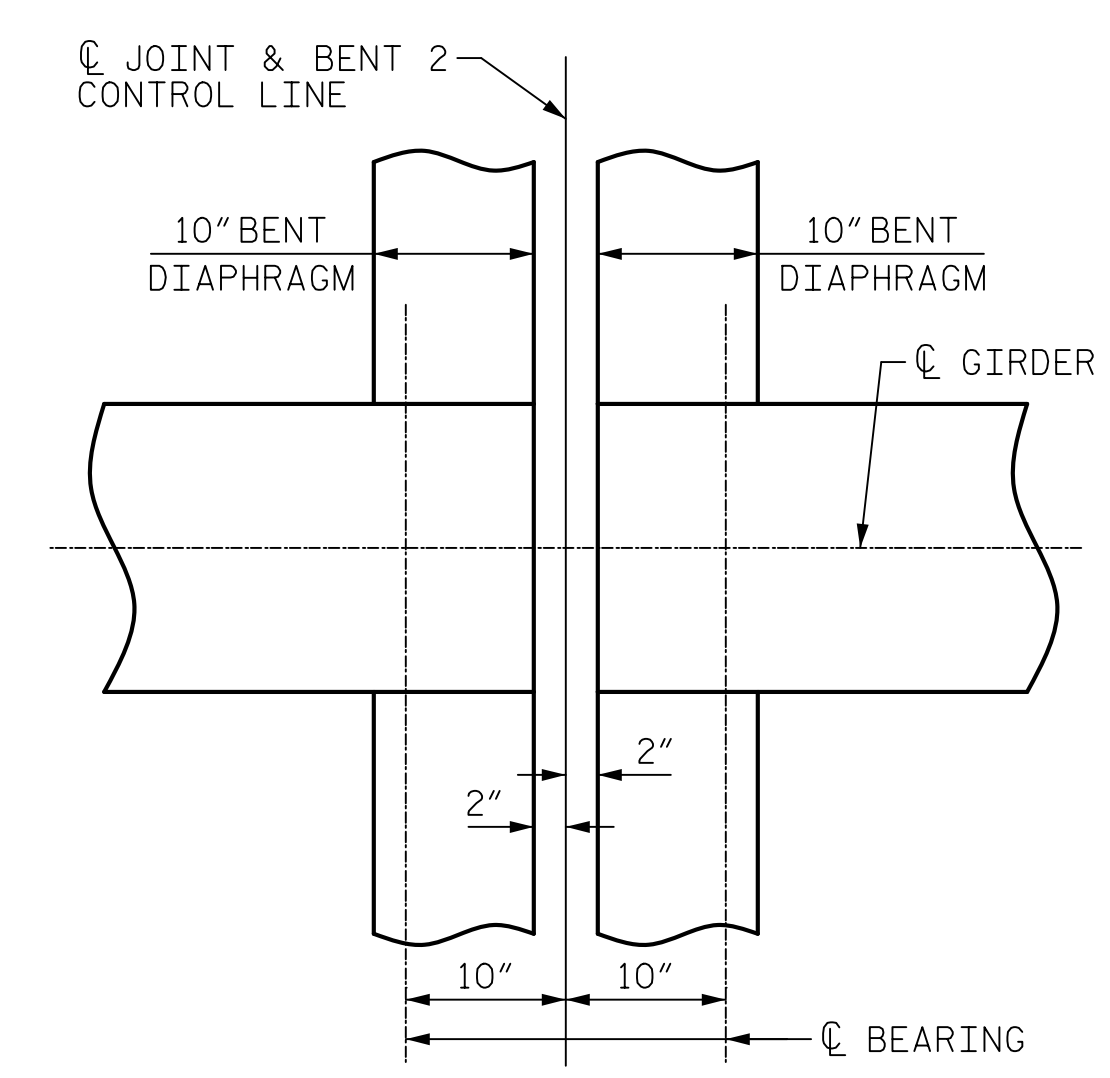


SECTION THROUGH LINK SLAB
(BENT 1, 3, & 4)

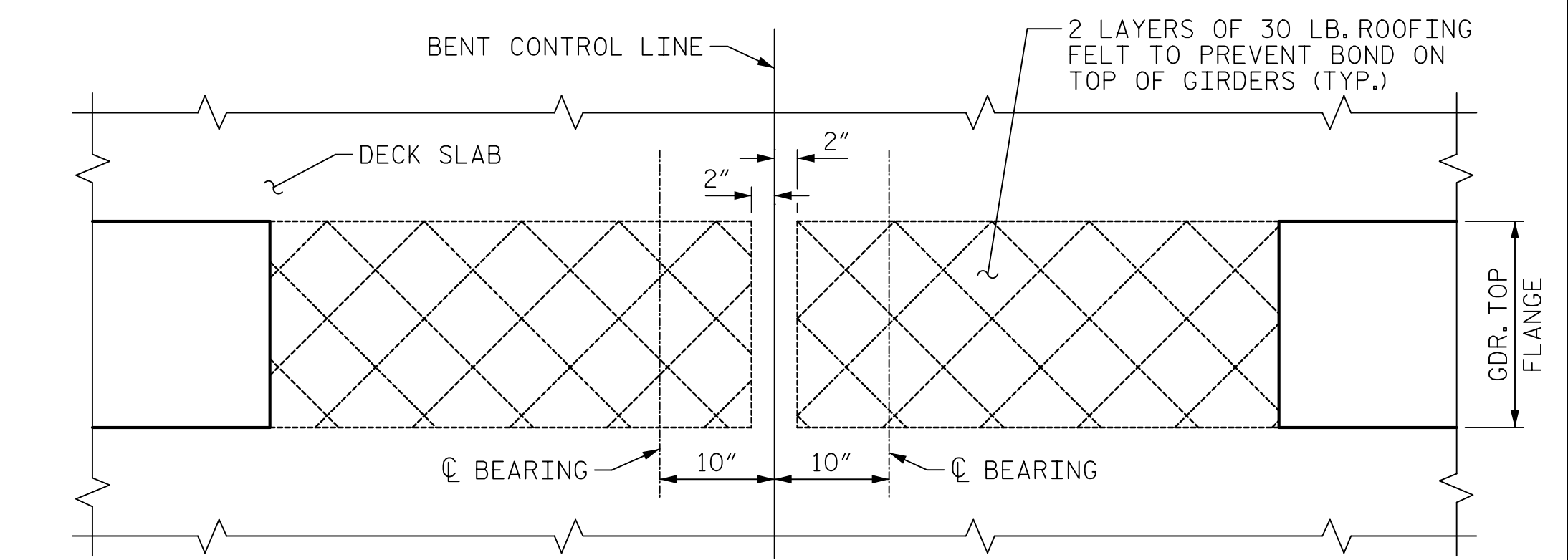
* NO WELDING OF FORMS OR FALSEWORK TO THE TOPS OF THE GIRDERS WILL BE PERMITTED IN THE LINK SLAB AREA.
 ** A 1/2" DEEP x 3/8" CONTRACTION JOINT SHALL BE SAWN WITHIN 24 HOURS OF POURING THE DECK. THE JOINT SHALL BE FILLED WITH JOINT SEALER MATERIAL. THE JOINT SEALER MATERIAL SHALL CONFORM TO THE REQUIREMENTS OF TYPE B LOW MODULUS SILICONE SEALANT, SEE SECTION 1028 OF THE STANDARD SPECIFICATIONS.



PLAN OF INTEGRAL END BENT
(END BENT 1 SHOWN, END BENT 2 SIMILAR)

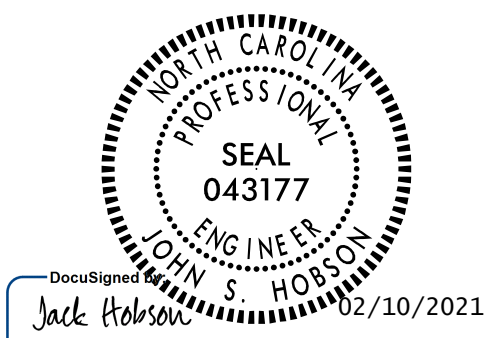


PLAN OF EXP. BENT DIAPHRAGM
(BENT 2)



PLAN OF LINK SLAB
(BENT 1, 3, & 4)

Mead & Hunt
 111 E. Hargett Street
 Suite 300
 Raleigh, NC 27601
 919-714-8670
 meadhunt.com
 NC License No. F-1235



PROJECT NO. B-5619
LENOIR COUNTY
 STATION: 30+80.00 -L-
 SHEET 3 OF 3

STATE OF NORTH CAROLINA DEPARTMENT OF TRANSPORTATION RALEIGH SUPERSTRUCTURE					
TYPICAL SECTION DETAILS					
REVISIONS					
NO.	BY:	DATE:	NO.	BY:	DATE:
1			3		
2			4		
					SHEET NO. S1-07 TOTAL SHEETS 40

DRAWN BY : J.S. HOBSON DATE : 11/05/20
 CHECKED BY : J.A. LEE DATE : 12/03/20
 DESIGN ENGINEER OF RECORD : J.S. HOBSON DATE : 02/09/21

DOCUMENT NOT CONSIDERED FINAL UNLESS ALL SIGNATURES COMPLETED